


PROJECT REFERENCE NO.	SHEET NO.
BR-5619	RW04
Location and Surveys	
DIVISION 2 LOCATION & SURVEYS	
PROJECT SURVEYOR	
	
DOCUMENT NOT CONSIDERED FINAL UNLESS ALL SIGNATURES COMPLETED	

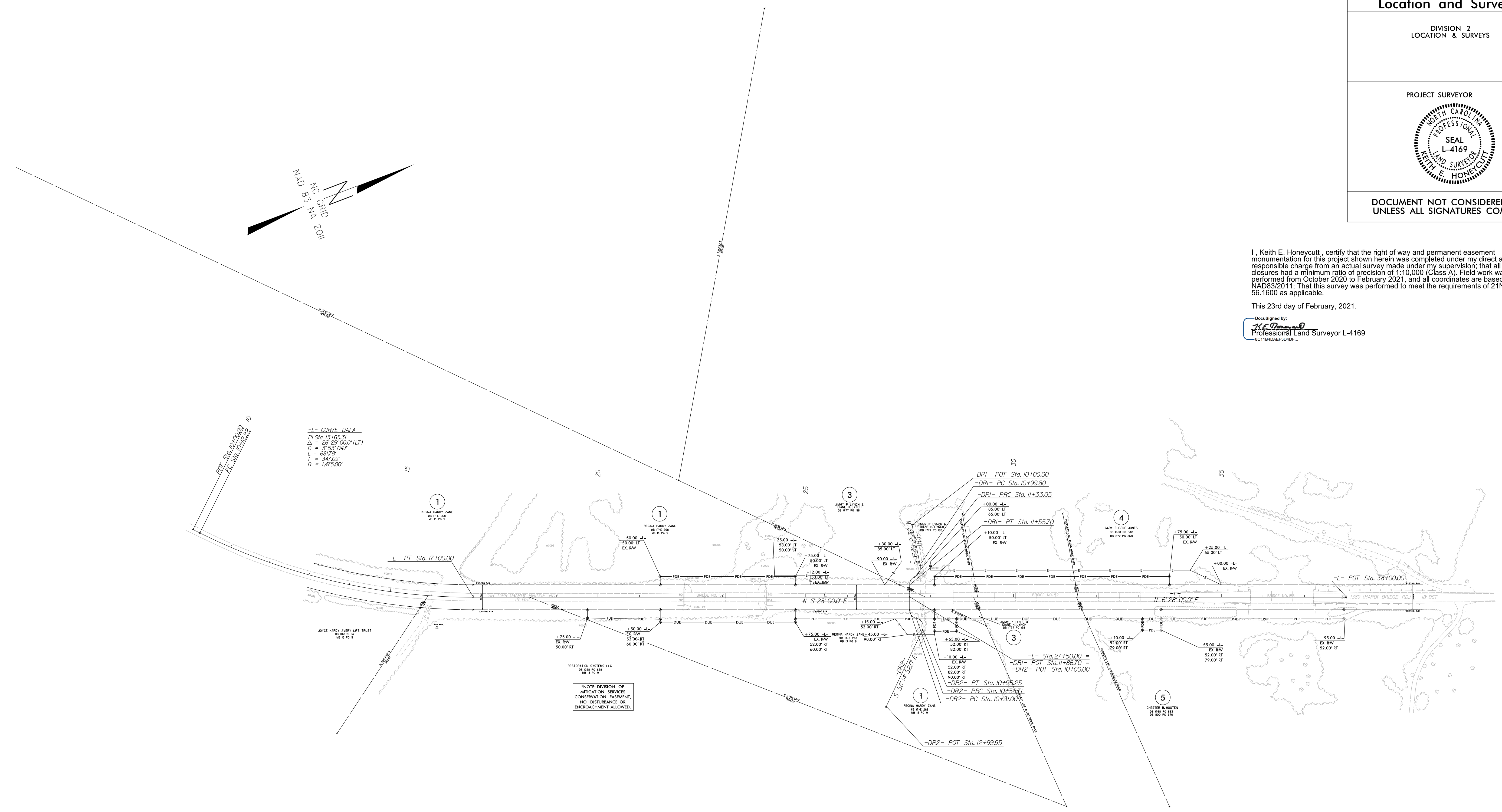
I, Keith E. Honeycutt, certify that the right of way and permanent easement monumentation for this project shown herein was completed under my direct and responsible charge from an actual survey made under my supervision; that all horizontal closures had a minimum ratio of precision of 1:10,000 (Class A). Field work was performed from October 2020 to February 2021, and all coordinates are based on NAD83/2011; That this survey was performed to meet the requirements of 21NCAC 56.1600 as applicable.

This 23rd day of February, 2021.

DocuSigned by:

 Professional Land Surveyor L-4169
 8C1194DAEF304F

REVISIONS



-L- CURVE DATA
 PI Sta. 13+65.31
 $\Delta = 20' 23' 00.00''$ (LT)
 $D = 3' 53' 04''$
 $L = 69.75'$
 $T = 347.09'$
 $R = 1475.00'$

NOTE: DIVISION OF
 MITIGATION SERVICES
 CONSERVATION EASEMENT,
 NO DISTURBANCE OR
 ENCROACHMENT ALLOWED.

NOTES:

1. IF FURTHER INFORMATION REGARDING PROJECT CONTROL IS NEEDED PLEASE CONTACT THE LOCATION AND SURVEYS UNIT.
2. PROJECT CONTROL WAS ESTABLISHED USING GNSS, THE GLOBAL NAVIGATION SATELLITE SYSTEM.
3. RIGHT OF WAY MONUMENTATION ESTABLISHED October 2020 TO February 2021.