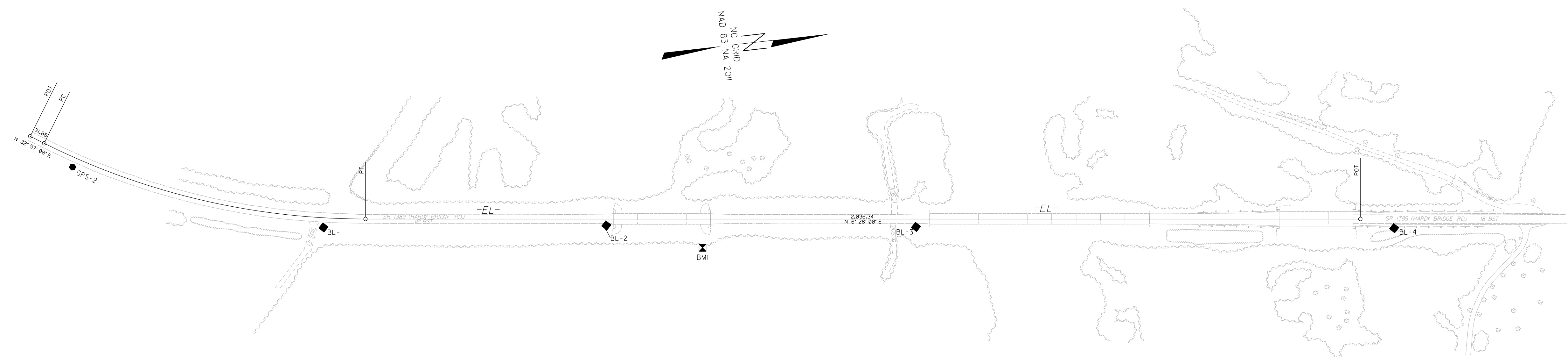


SURVEY CONTROL SHEET B-5619

W/EXISTING CENTERLINE ALIGNMENTS PRIOR TO CONSTRUCTION

PROJECT REFERENCE NO. B-5619	SHEET NO. RW02C-1
Location and Surveys	
DIVISION 2 LOCATION & SURVEYS	

REVISIONS



BASELINE					
BL	POINT	DESC.	NORTH	EAST	ELEVATION
	GPS1	NCDOT GPS B5619	536089.4620	2367364.3130	51.92
	GPS2	NCDOT GPS B5619	536983.2740	2367955.4220	49.82
	BL1	BL - 1	537479.6203	2368135.9277	48.82
	BL2	BL - 2	538055.4203	2368196.9837	49.70
	BL3	BL - 3	538684.9114	2368271.4300	52.01
	BL4	BL - 4	539657.0780	2368384.1950	49.42

EXISTING ALIGNMENT									
EL POINT	N	E	BEARING	DIST	DELTA	D	L	T	R
POT	536984.197	2367883.222							
LINE			N 32° 57' 00.0\"	31.88					
PC	536930.950	2367900.563							
CURVE			N 19° 42' 30.0\"	675.72	26° 29' 00.0\"	03° 53' 04.1\"	681.78	347.09	1475.00
PT	537567.091	2368128.439							
LINE			N 06° 28' 00.0\"	2036.34					
POT	539590.473	2368357.782							

BENCKMARK

.....

BM1 ELEVATION = 38.64

N 538246 E 2368265

RAILROAD SPIKE SET IN 18\"

.....

NOTES:

1. PROJECT CONTROL WAS ESTABLISHED USING GNSS, THE GLOBAL NAVIGATION SATELLITE SYSTEM.
2. THE SURVEY CONTROL DATA FOR THIS PROJECT HAS BEEN COMPILED FROM VARIOUS SOURCES. IF FURTHER INFORMATION REGARDING PROJECT CONTROL IS NEEDED, PLEASE CONTACT THE LOCATION AND SURVEYS UNIT.