

5/28/19

**BRIDGE HYDRAULIC DATA**

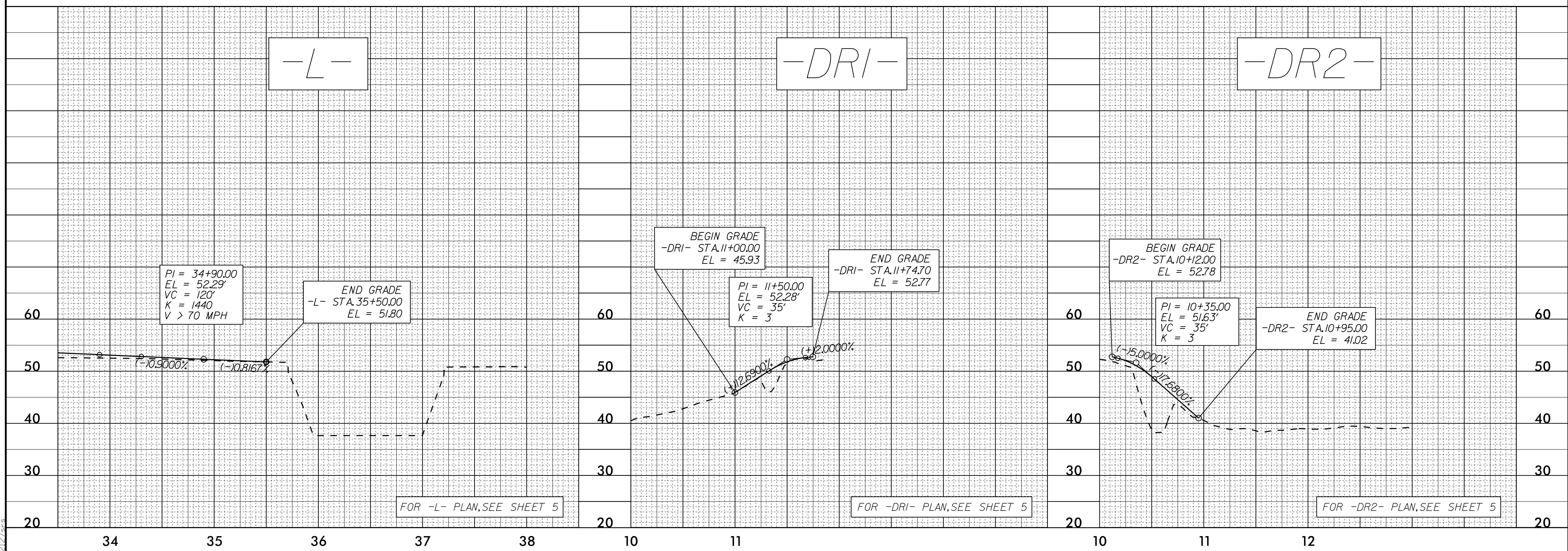
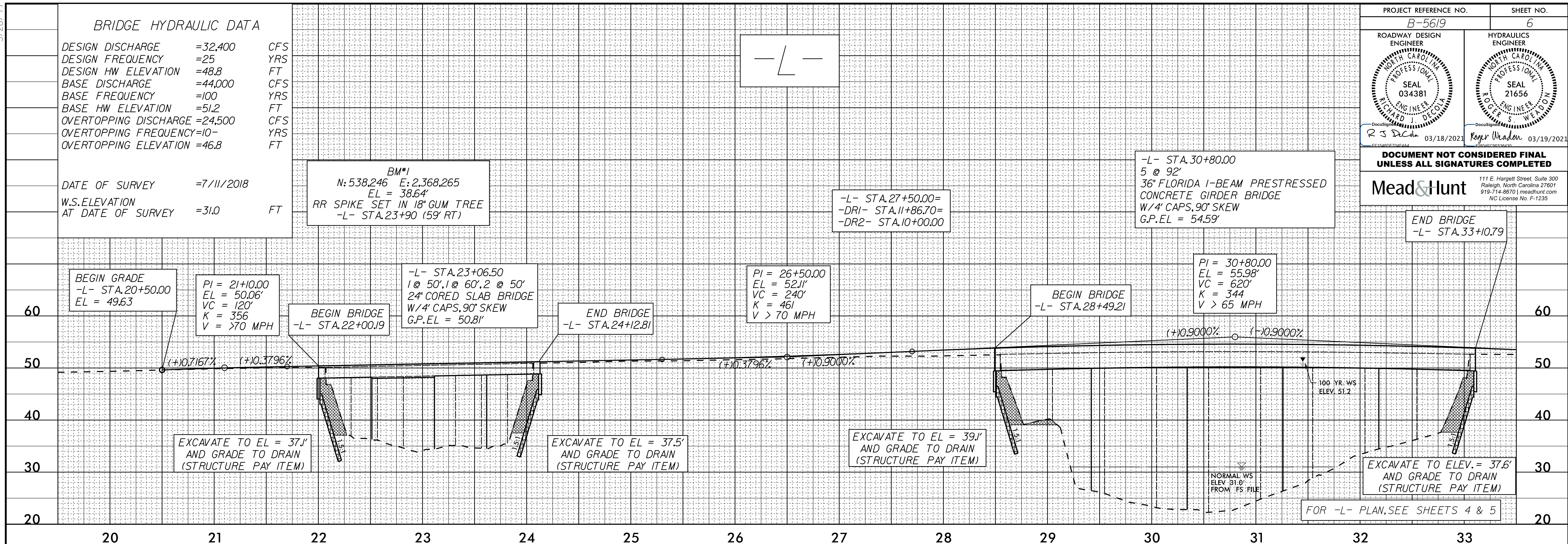
DESIGN DISCHARGE	=32,400	CFS
DESIGN FREQUENCY	=25	YRS
DESIGN HW ELEVATION	=48.8	FT
BASE DISCHARGE	=44,000	CFS
BASE FREQUENCY	=100	YRS
BASE HW ELEVATION	=51.2	FT
OVERTOPPING DISCHARGE	=24,500	CFS
OVERTOPPING FREQUENCY	=10	YRS
OVERTOPPING ELEVATION	=46.8	FT

DATE OF SURVEY	=7/11/2018	
W.S.ELEVATION AT DATE OF SURVEY	=31.0	FT

BM#1  
 N: 538,246 E: 2,368,265  
 EL = 38.64'  
 RR SPIKE SET IN 18" GUM TREE  
 -L- STA. 23+90 (59' RT)

PROJECT REFERENCE NO.	B-5619	SHEET NO.	6
ROADWAY DESIGN ENGINEER		HYDRAULICS ENGINEER	
DOCUMENT NOT CONSIDERED FINAL UNLESS ALL SIGNATURES COMPLETED			
<b>Mead&amp;Hunt</b>			
111 E. Hargett Street, Suite 300 Raleigh, North Carolina 27601 919-714-8670   mead&hunt.com NC License No. F-1235			



20 - JAN 2021 14:32  
R:\Projects\B5619\_Rdy.pfl\_6.dgn