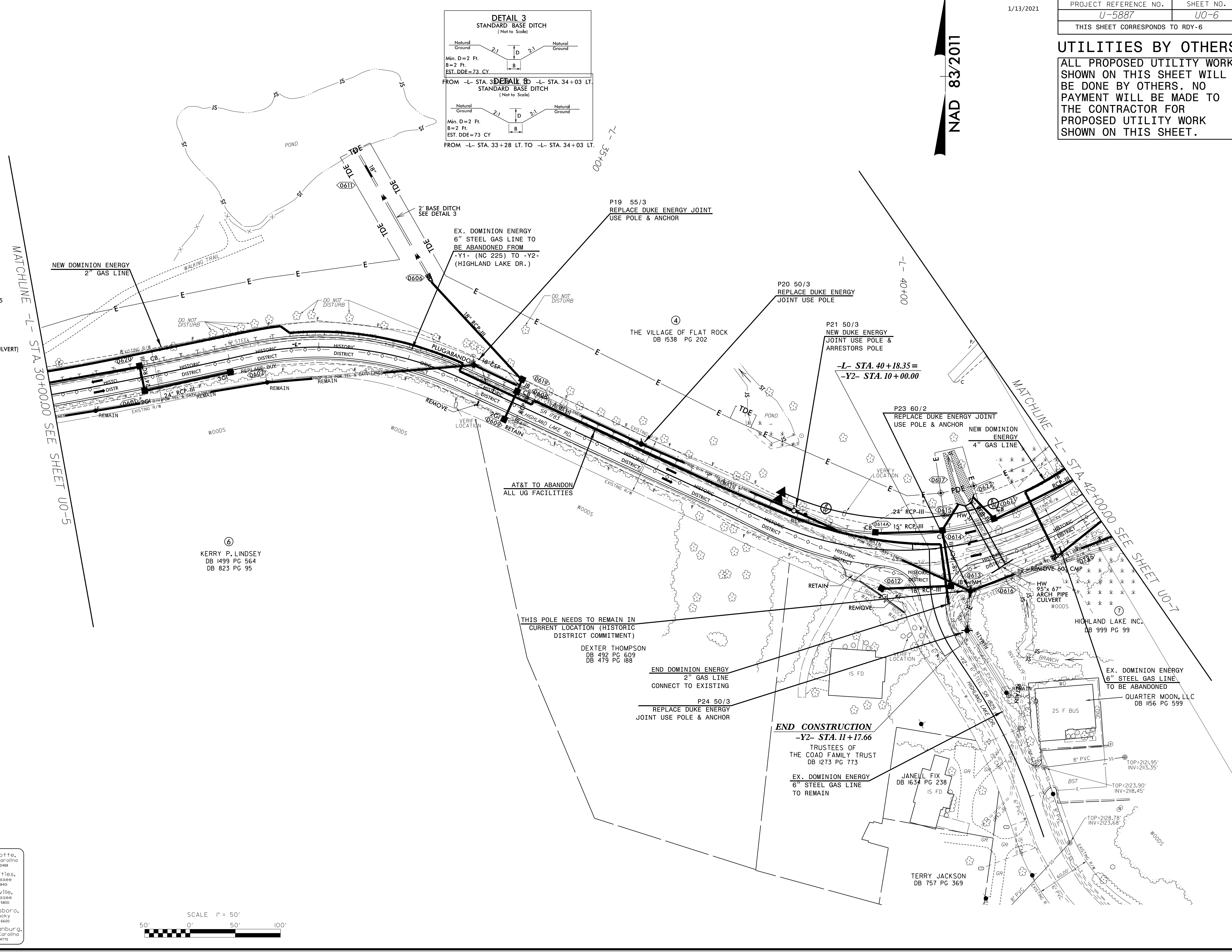
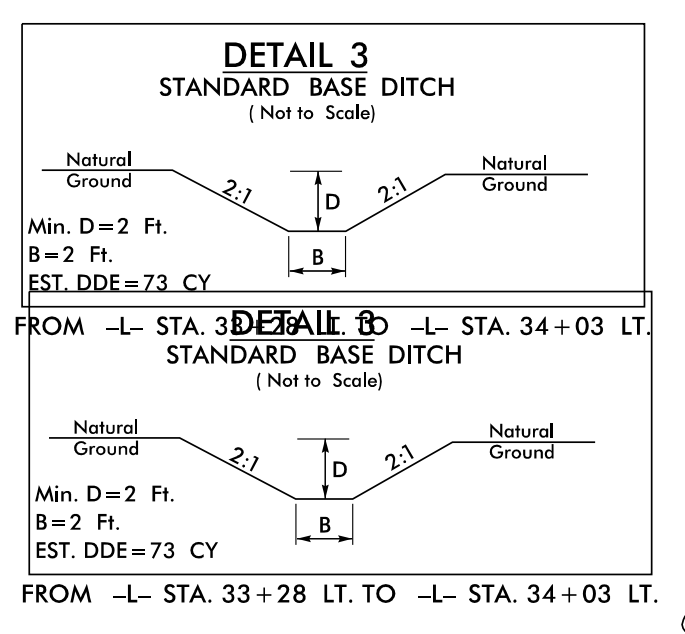


UTILITIES BY OTHERS

ALL PROPOSED UTILITY WORK SHOWN ON THIS SHEET WILL BE DONE BY OTHERS. NO PAYMENT WILL BE MADE TO THE CONTRACTOR FOR PROPOSED UTILITY WORK SHOWN ON THIS SHEET.

NAD 83/2011

- 0601 TOP=2110.48
INV. IN=2106.98 (0602)
INV. OUT=2106.98 (0620)
- 0602 TOP=2111.76
INV. OUT=2108.26 (0601)
- 0605 TOP=2106.84
INV. IN=2102.61 (0607)
INV. OUT=2102.61 (0606)
- 0606 PIPE OUTLET=2102.47
- 0607 TOP=2105.80
INV. IN=2103.55 (0619)
INV. OUT=2103.55 (0605)
- 0608 TOP=2113.43
INV. IN=2108.59 (0609)
INV. OUT=2106.28 (0619)
- 0609 TOP=2112.09
INV. OUT=2109.09 (0608)
- 0610 TOP=2106.31
INV. =2104.06 (0611)
- 0611 PIPE OUTLET=2103.38
- 0612 TOP=2111.80
INV. OUT=2108.55 (0613)
- 0613 TOP=2112.37
INV. IN=2108.19 (0612)
INV. OUT=2108.19 (0618)
- 0614A TOP=2111.86
INV. OUT=2108.86 (0614)
- 0614 TOP=2111.67
INV. IN=2107.87 (0614A)
INV. OUT=2107.87 (0615)
- 0615 PIPE OUTLET=2107.69
- 0616 ARCH CULVERT INLET=2104.75
- 0617 HW OUTLET=2103.33
- 0618 TOP=2113.80
INV. IN=2107.87 (0613)
INV. OUT=2107.51 (0725)
INV. OUT=2105.92 (95X67 CULVERT)
- 0619 TOP=2111.09
INV. =2105.09
- 0620 TOP=2107.50
INV. =2103.73
- 0621 TOP=2111.88
INV. IN=2104.75 (0618,0725)
INV. OUT=2103.75 (0622)
- 0622 PIPE OUTLET=2104.61



TRANSPORTATION: 31535-06 U-5887 UTILITIES: U-5887-UTL-U06-DGN

V&M
Vaughn & Melton
Consulting Engineers

Charlotte, North Carolina 704-357-0488
Tri-Cities, Tennessee 423-867-9400
Knoxville, Tennessee 865-546-5800
Asheville, North Carolina 828-253-2796
Middlesboro, Kentucky 606-248-6600
Spartanburg, South Carolina 864-574-4775

Copyright © 2006 Vaughn & Melton, Inc. All Rights Reserved.

