

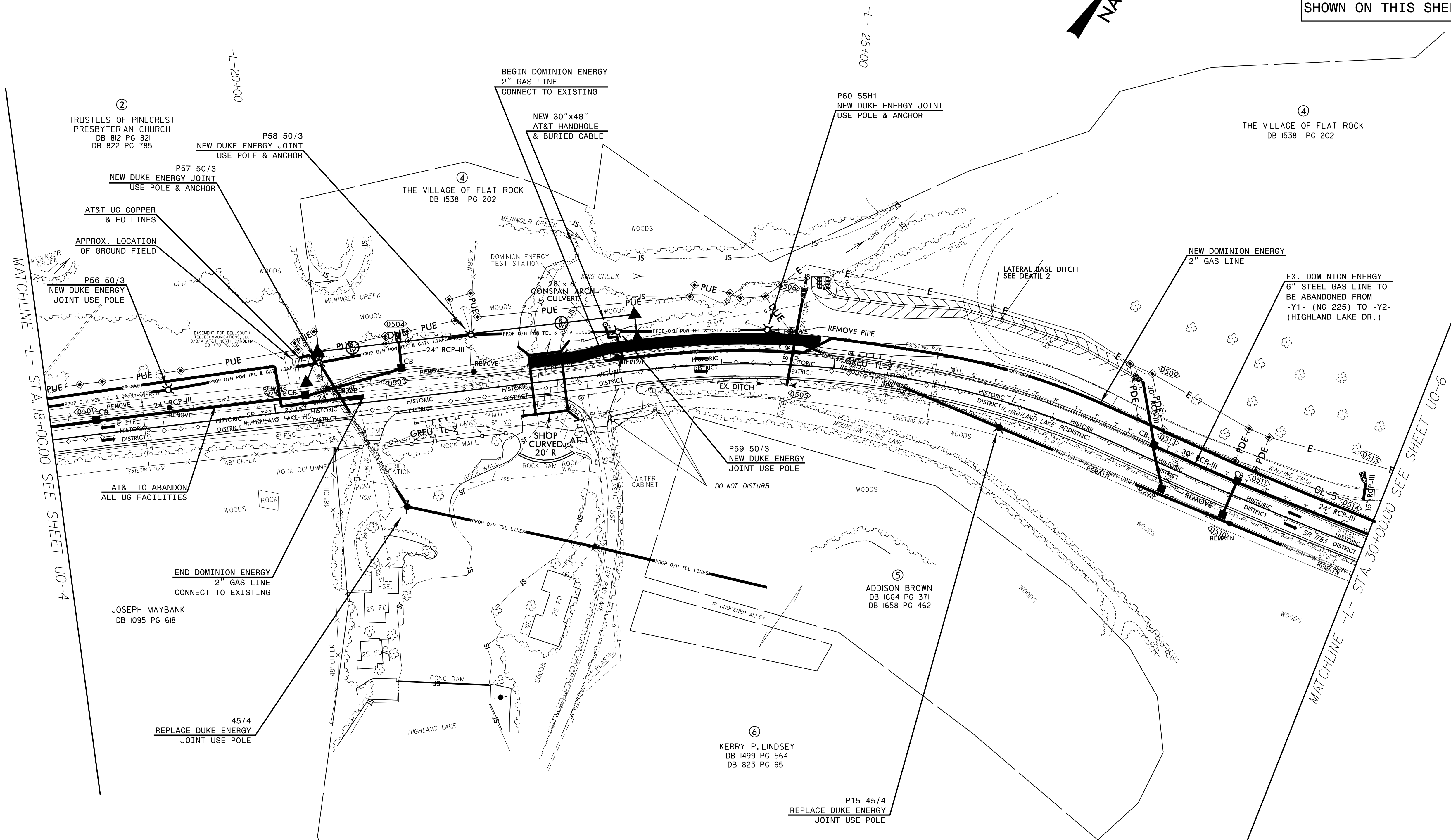
PROJECT REFERENCE NO.	SHEET NO.
U-5887	U0-5
THIS SHEET CORRESPONDS TO RDY-5	

UTILITIES BY OTHERS

ALL PROPOSED UTILITY WORK SHOWN ON THIS SHEET WILL BE DONE BY OTHERS. NO PAYMENT WILL BE MADE TO THE CONTRACTOR FOR PROPOSED UTILITY WORK SHOWN ON THIS SHEET.

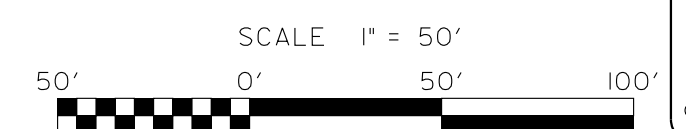
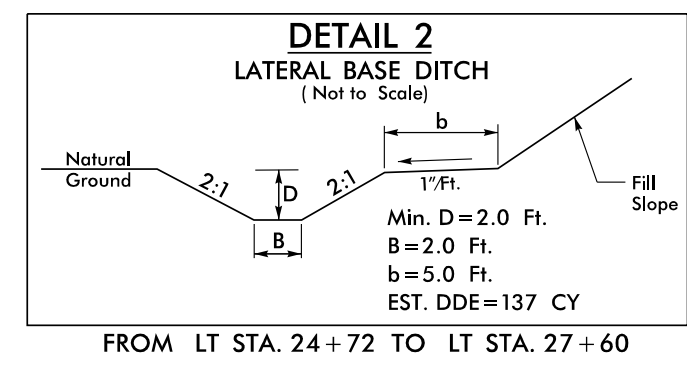
25% PLANS 11/29/18
DUKE ENERGY PLANS ADDED: 4/15/19
DUKE ENERGY PLANS ADDED: 1/15/20
MBE PLANS ADDED: 1/15/20
AT&T PLANS ADDED: 3/24/20
DUKE REV. POLE AT ATT SWITCH SITE 4/30/20
DOMINION ENERGY PLANS ADDED 5/7/20
AT&T UPDATED PLANS ADDED 6/11/20
NEW AT&T PLANS ADDED 7/20/20

- 0501 TOP=2112.83
INV. IN=2109.56 (0412)
INV. OUT=2109.56 (0503)
- 0503 TOP=2110.10
INV. IN=2106.85 (0501)
INV. OUT=2106.85 (0504)
- 0504 PIPE OUTLET=2105.55
- 0505 PIPE INLET=2107.33
- 0506 PIPE OUTLET=2105.61
- 0508 TOP=2106.83
INV. OUT=2103.83 (0513)
- 0509 PIPE OUTLET=2102.29
- 0510 TOP=2108.05
INV. OUT=2105.05 (0511)
- 0511 TOP=2110.25
INV. IN=2104.92 (0510)
INV. OUT=2104.45 (0512)
- 0512 TOP=2107.80
INV. IN=2103.33 (0511)
INV. IN=2102.83 (0620)
INV. OUT=2102.83 (0513)
- 0513 TOP=2107.80
INV. IN=2102.48 (0512)
INV. IN=2102.98 (0508)
INV. OUT=2102.48 (0509)
- 0514 PIPE INLET=2104.50
- 0515 PIPE OUTLET=2104.40



MATCHLINE -L- STA. 18+00.00 SEE SHEET U0-4

MATCHLINE -L- STA. 30+00.00 SEE SHEET U0-6



V&M
Vaughn & Melton
Consulting Engineers

Asheville, North Carolina 828-253-2796

Charlotte, North Carolina 704-351-0488
Tri-Cities, Tennessee 423-461-8401
Knoxville, Tennessee 865-546-1809
Middlesboro, Kentucky 606-248-6600
Spoutenburg, South Carolina 864-574-4775

Copyright © 2020 Vaughn & Melton, Inc. All Rights Reserved.

TRANSPORTATION\31535-26\UTILITIES\U-5887-UTL-U0-5.DGN