

PROJECT REFERENCE NO. U-5887	SHEET NO. U0-4
THIS SHEET CORRESPONDS TO RDY-4	

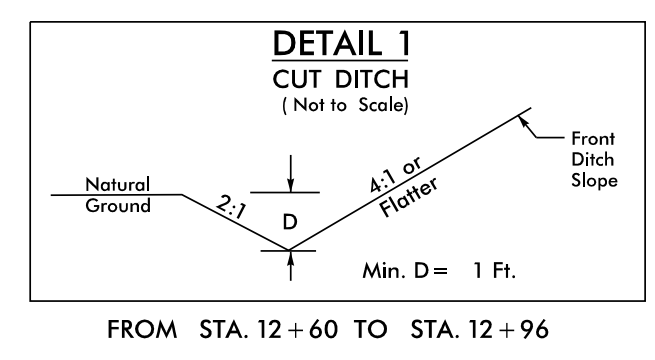
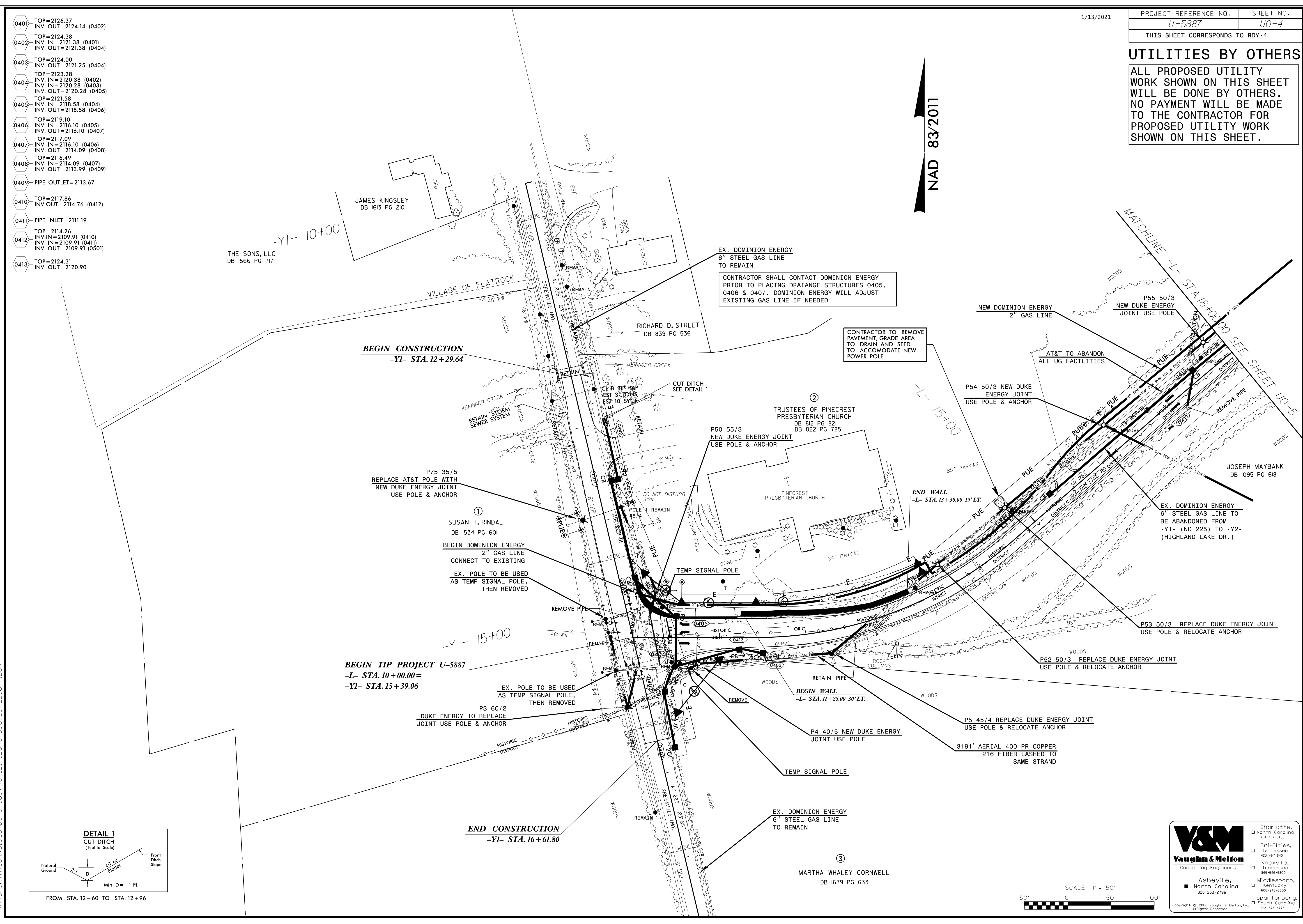
UTILITIES BY OTHERS

ALL PROPOSED UTILITY WORK SHOWN ON THIS SHEET WILL BE DONE BY OTHERS. NO PAYMENT WILL BE MADE TO THE CONTRACTOR FOR PROPOSED UTILITY WORK SHOWN ON THIS SHEET.

25% PLANS 11/29/18
DUKE ENERGY PLANS ADDED: 4/15/19
DUKE ENERGY PLANS ADDED: 1/15/20
AT&T PLANS ADDED: 3/24/20
AT&T PLANS ADDED: 4/30/20
DOMINION ENERGY PLANS ADDED: 5/7/20
AT&T UPDATED PLANS ADDED: 6/11/20
NEW AT&T PLANS ADDED: 7/20/20

- 0401 TOP=2126.37
INV. OUT=2124.14 (0402)
- 0402 TOP=2124.38
INV. IN=2121.38 (0401)
INV. OUT=2121.38 (0404)
- 0403 TOP=2124.00
INV. OUT=2121.25 (0404)
- 0404 TOP=2123.28
INV. IN=2120.38 (0402)
INV. IN=2120.28 (0403)
INV. OUT=2120.28 (0405)
- 0405 TOP=2121.58
INV. IN=2118.58 (0404)
INV. OUT=2118.58 (0406)
- 0406 TOP=2119.10
INV. IN=2116.10 (0405)
INV. OUT=2116.10 (0407)
- 0407 TOP=2117.09
INV. IN=2116.10 (0406)
INV. OUT=2114.09 (0408)
- 0408 TOP=2116.49
INV. IN=2114.09 (0407)
INV. OUT=2113.99 (0409)
- 0409 PIPE OUTLET=2113.67
- 0410 TOP=2117.86
INV. OUT=2114.76 (0412)
- 0411 PIPE INLET=2111.19
- 0412 TOP=2114.26
INV. IN=2109.91 (0410)
INV. IN=2109.91 (0411)
INV. OUT=2109.91 (0501)
- 0413 TOP=2124.31
INV. OUT=2120.90

NAD 83/2011

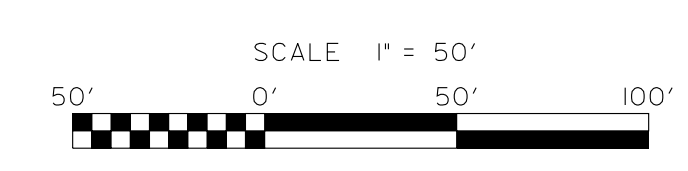


V&M
Vaughn & Melton
Consulting Engineers

Asheville, North Carolina 828-253-2796

Charlotte, North Carolina 704-357-0488
Tri-Cities, Tennessee 423-467-8400
Knoxville, Tennessee 865-546-5800
Middlesboro, Kentucky 606-248-6600
Spartanburg, South Carolina 864-574-4775

Copyright © 2006 Vaughn & Melton, Inc. All Rights Reserved



TRANSPORTATION:31535-06 U-5887 UTILITIES:U-5887 UTIL:U0-4.DGN