

PROJECT REFERENCE NO.	SHEET NO.
U-5887	UC-8A
DESIGNED BY: SSD	
DRAWN BY: BAB	
CHECKED BY: JDN	
APPROVED BY: JDN	
REVISED:	
NORTH CAROLINA DEPARTMENT OF TRANSPORTATION	
UTILITIES ENGINEERING SEC. PHONE: (919) 707-6690 FAX: (919) 250-4151	
UTILITY CONSTRUCTION PLANS ONLY	

**DOCUMENT NOT CONSIDERED FINAL  
UNTIL ALL SIGNATURES ARE COMPLETED**

**UTILITY CONSTRUCTION**

THE ESTIMATED QUANTITY OF DUCTILE IRON SEWER PIPE FITTINGS ON THIS PLAN SHEET IS 205 POUNDS. THE ACTUAL QUANTITY AND TYPE OF FITTINGS WILL VARY BASED ON FIELD CONDITIONS.

6 LF 2" SERVICE LINE  
-SL-5- STA. 11+21.64

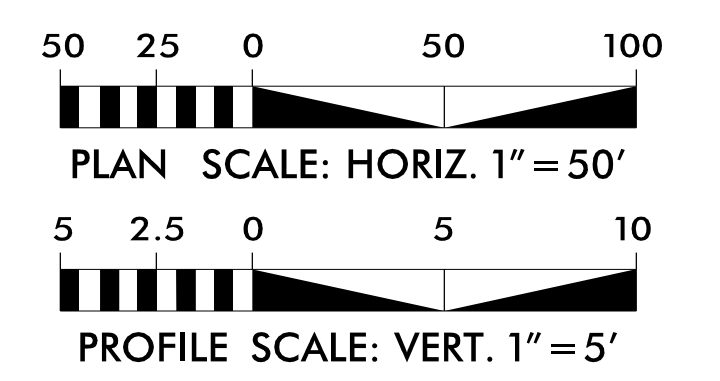
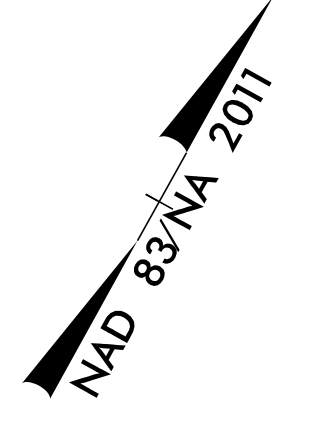
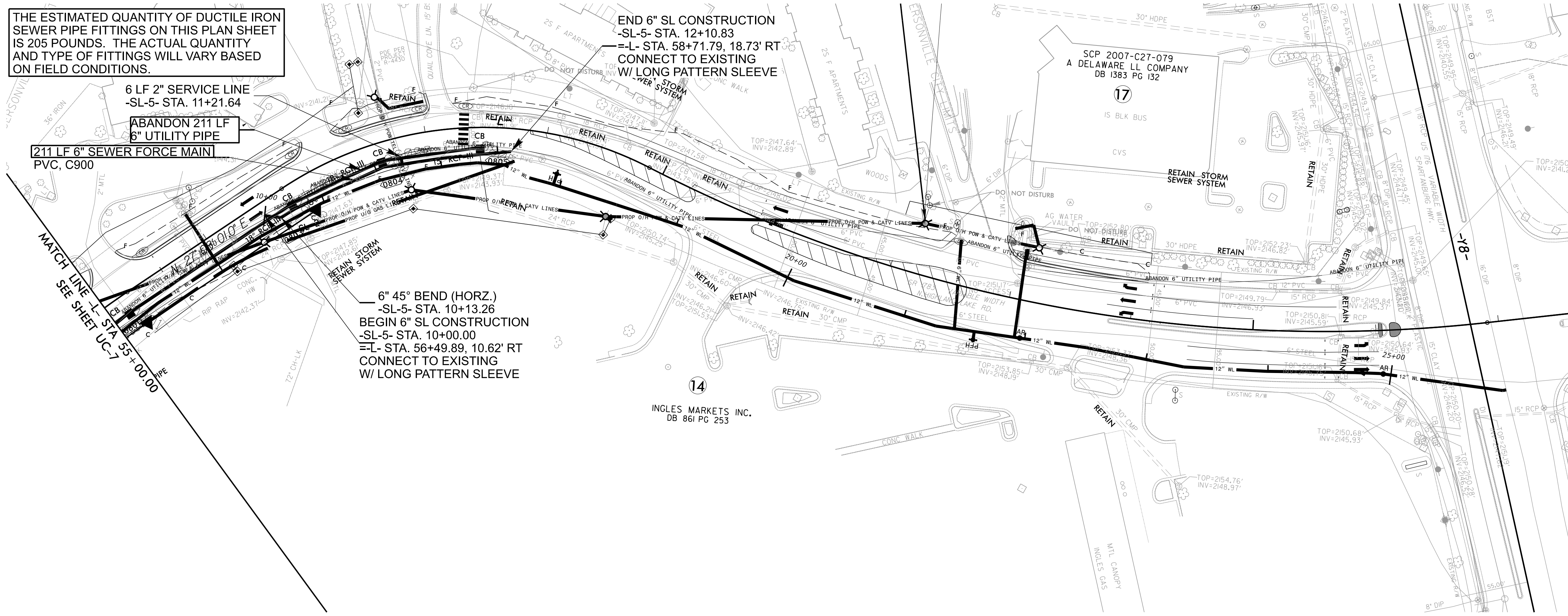
ABANDON 211 LF  
6" UTILITY PIPE

211 LF 6" SEWER FORCE MAIN  
PVC, C900

END 6" SL CONSTRUCTION  
-SL-5- STA. 12+10.83  
=L- STA. 58+71.79, 18.73' RT  
CONNECT TO EXISTING  
W/ LONG PATTERN SLEEVE

6" 45° BEND (HORZ.)  
-SL-5- STA. 10+13.26  
BEGIN 6" SL CONSTRUCTION  
-SL-5- STA. 10+00.00  
=L- STA. 56+49.89, 10.62' RT  
CONNECT TO EXISTING  
W/ LONG PATTERN SLEEVE

MATCH LINE - STA 55+00.00  
SEE SHEET UC-7



REVISIONS

**SEWER LINE -SL-5- PROFILE**

