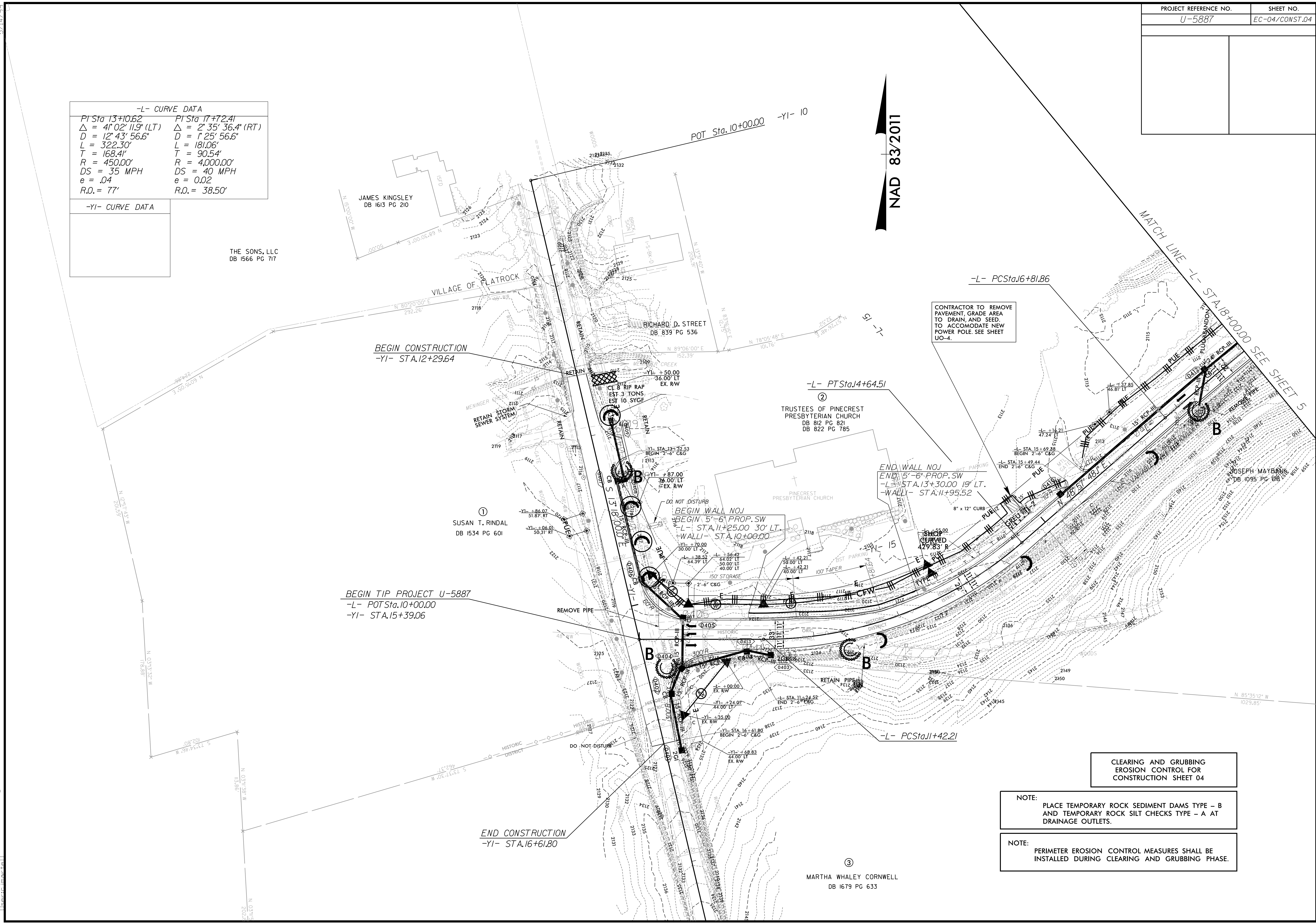


| -L- CURVE DATA                     |                                   |
|------------------------------------|-----------------------------------|
| PI Sta 13+10.62                    | PI Sta 17+72.41                   |
| $\Delta = 41^{\circ}02'11.9"$ (LT) | $\Delta = 2^{\circ}35'36.4"$ (RT) |
| D = 12'43'56.6"                    | D = 1'25'56.6"                    |
| L = 322.30'                        | L = 181.06'                       |
| T = 168.41'                        | T = 90.54'                        |
| R = 450.00'                        | R = 4,000.00'                     |
| DS = 35 MPH                        | DS = 40 MPH                       |
| e = .04                            | e = 0.02                          |
| R.O. = 77'                         | R.O. = 38.50'                     |

| -YI- CURVE DATA |
|-----------------|
|                 |

THE SONS, LLC  
DB 1566 PG 717

NAD 83/2011



CLEARING AND GRUBBING  
EROSION CONTROL FOR  
CONSTRUCTION SHEET 04

NOTE:  
PLACE TEMPORARY ROCK SEDIMENT DAMS TYPE - B  
AND TEMPORARY ROCK SILT CHECKS TYPE - A AT  
DRAINAGE OUTLETS.

NOTE:  
PERIMETER EROSION CONTROL MEASURES SHALL BE  
INSTALLED DURING CLEARING AND GRUBBING PHASE.

5/18/2020 8:51:10 AM U:\Projects\15887\_Env\_EC4.dgn