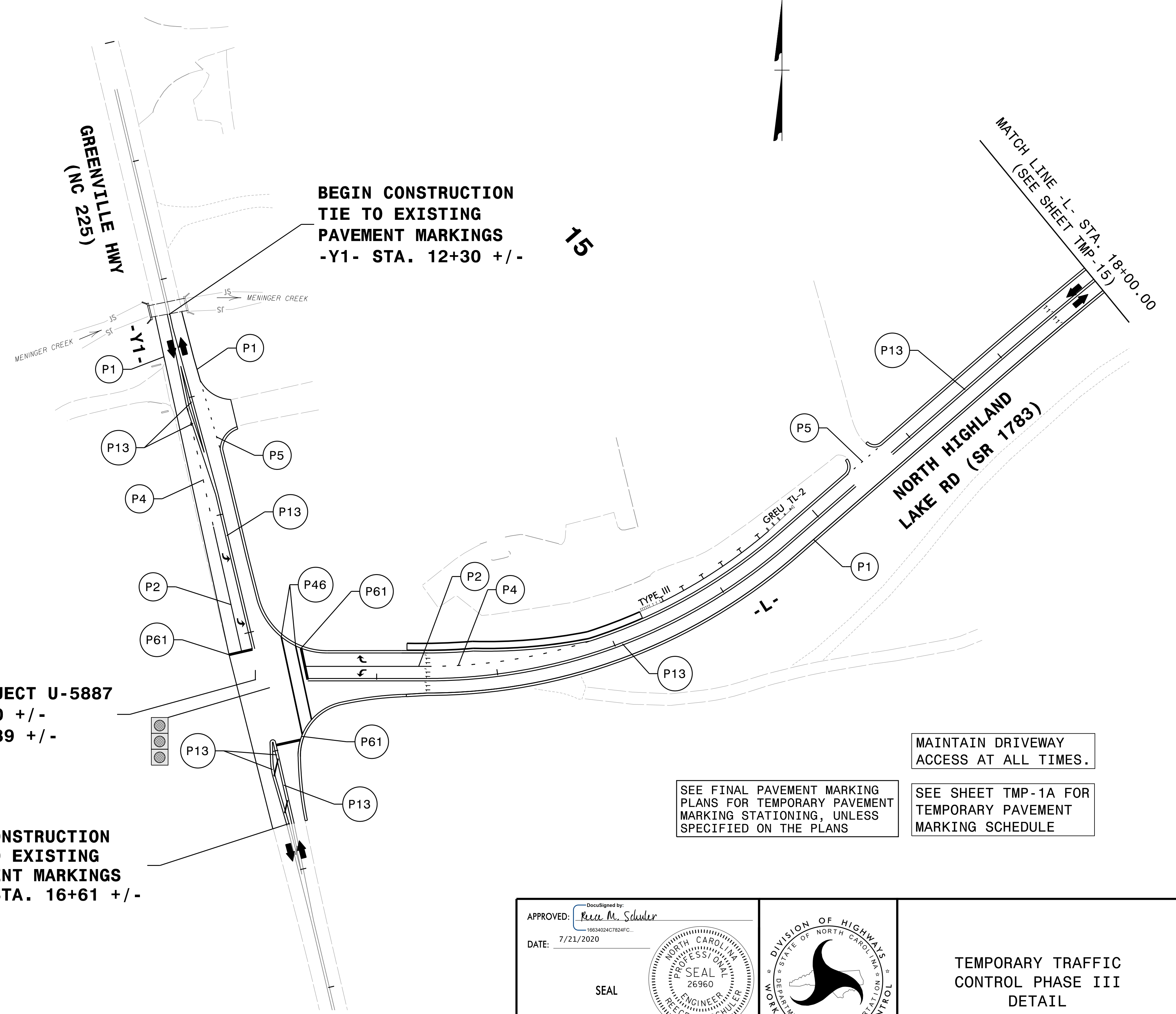


10

15

GREENVILLE HWY
(NC 225)

NORTH HIGHLAND
LAKE RD (SR 1783)



BEGIN CONSTRUCTION
TIE TO EXISTING
PAVEMENT MARKINGS
-Y1- STA. 12+30 +/-

BEGIN TIP PROJECT U-5887
-L- STA. 10+00 +/-
-Y1- STA. 15+39 +/-

END CONSTRUCTION
TIE TO EXISTING
PAVEMENT MARKINGS
-Y1- STA. 16+61 +/-

MAINTAIN DRIVEWAY
ACCESS AT ALL TIMES.

SEE FINAL PAVEMENT MARKING
PLANS FOR TEMPORARY PAVEMENT
MARKING STATIONING, UNLESS
SPECIFIED ON THE PLANS

SEE SHEET TMP-1A FOR
TEMPORARY PAVEMENT
MARKING SCHEDULE

7/21/2020
V:\Asheville\Transportation\31535-06 U-5887\TrafficControl\TCP\U5887_TMP_SHEET14.dgn
User:tcimar-tell

APPROVED: *Ree M. Schuler*
DATE: 7/21/2020

SEAL

DOCUMENT NOT CONSIDERED FINAL
UNLESS ALL SIGNATURES COMPLETED

DIVISION OF HIGHWAYS
STATE OF NORTH CAROLINA
DEPARTMENT OF TRANSPORTATION
WORK ZONE TRAFFIC CONTROL

TEMPORARY TRAFFIC
CONTROL PHASE III
DETAIL