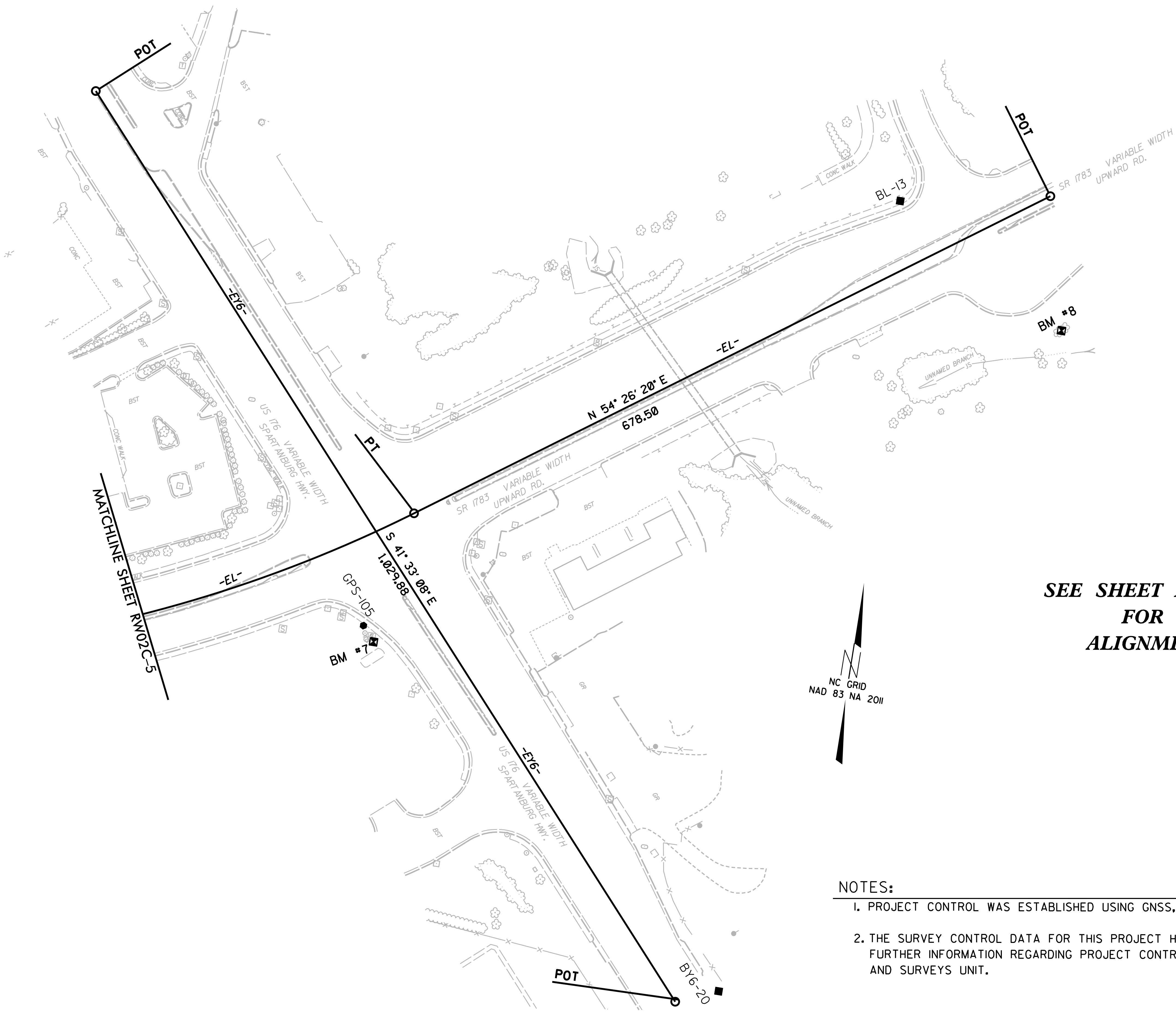


SURVEY CONTROL SHEET

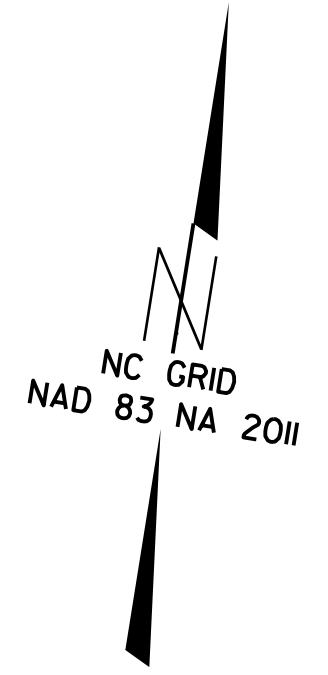
W/EXISTING CENTERLINE ALIGNMENTS PRIOR TO CONSTRUCTION

6/2/2019
 16-JUL-2019 14:55
 V:\Asheville\surveys\2019\31912-55 U-5887 Highland Lake ROW Stake\Work\U5887_Is_RW02C-6.dgn
 atabakova

GPS-104



**SEE SHEET RW02C-7 THRU 8
FOR FURTHER
ALIGNMENT DETAILS**



NOTES:

1. PROJECT CONTROL WAS ESTABLISHED USING GNSS, THE GLOBAL NAVIGATION SATELLITE SYSTEM.
2. THE SURVEY CONTROL DATA FOR THIS PROJECT HAS BEEN COMPILED FROM VARIOUS SOURCES. IF FURTHER INFORMATION REGARDING PROJECT CONTROL IS NEEDED, PLEASE CONTACT THE LOCATION AND SURVEYS UNIT.