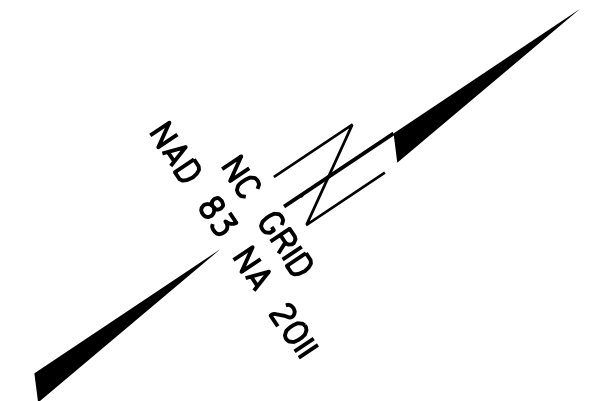
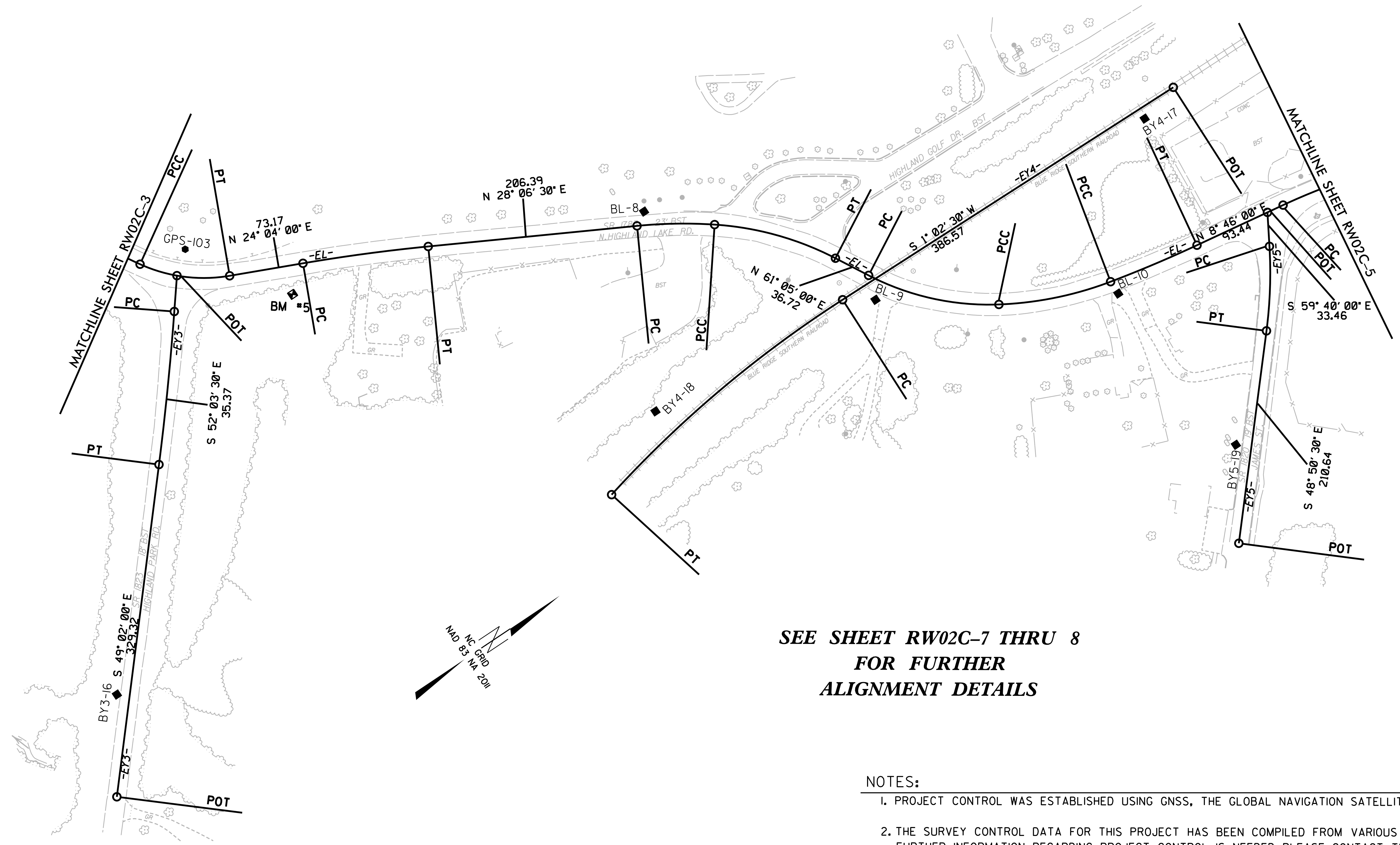


SURVEY CONTROL SHEET

W/ EXISTING CENTERLINE ALIGNMENTS PRIOR TO CONSTRUCTION

REVISIONS



**SEE SHEET RW02C-7 THRU 8
FOR FURTHER
ALIGNMENT DETAILS**

- NOTES:**
- PROJECT CONTROL WAS ESTABLISHED USING GNSS, THE GLOBAL NAVIGATION SATELLITE SYSTEM.
 - THE SURVEY CONTROL DATA FOR THIS PROJECT HAS BEEN COMPILED FROM VARIOUS SOURCES. IF FURTHER INFORMATION REGARDING PROJECT CONTROL IS NEEDED, PLEASE CONTACT THE LOCATION AND SURVEYS UNIT.

I6-JUL-2019 14:43
 V:\shvevi\1\surveys\2019\31912-55 U-5887 Highland Lake RDW Stoke\Work\U5887-1s-RW02C-4.dgn
 atabakova AT VDI-WKUEM-27