


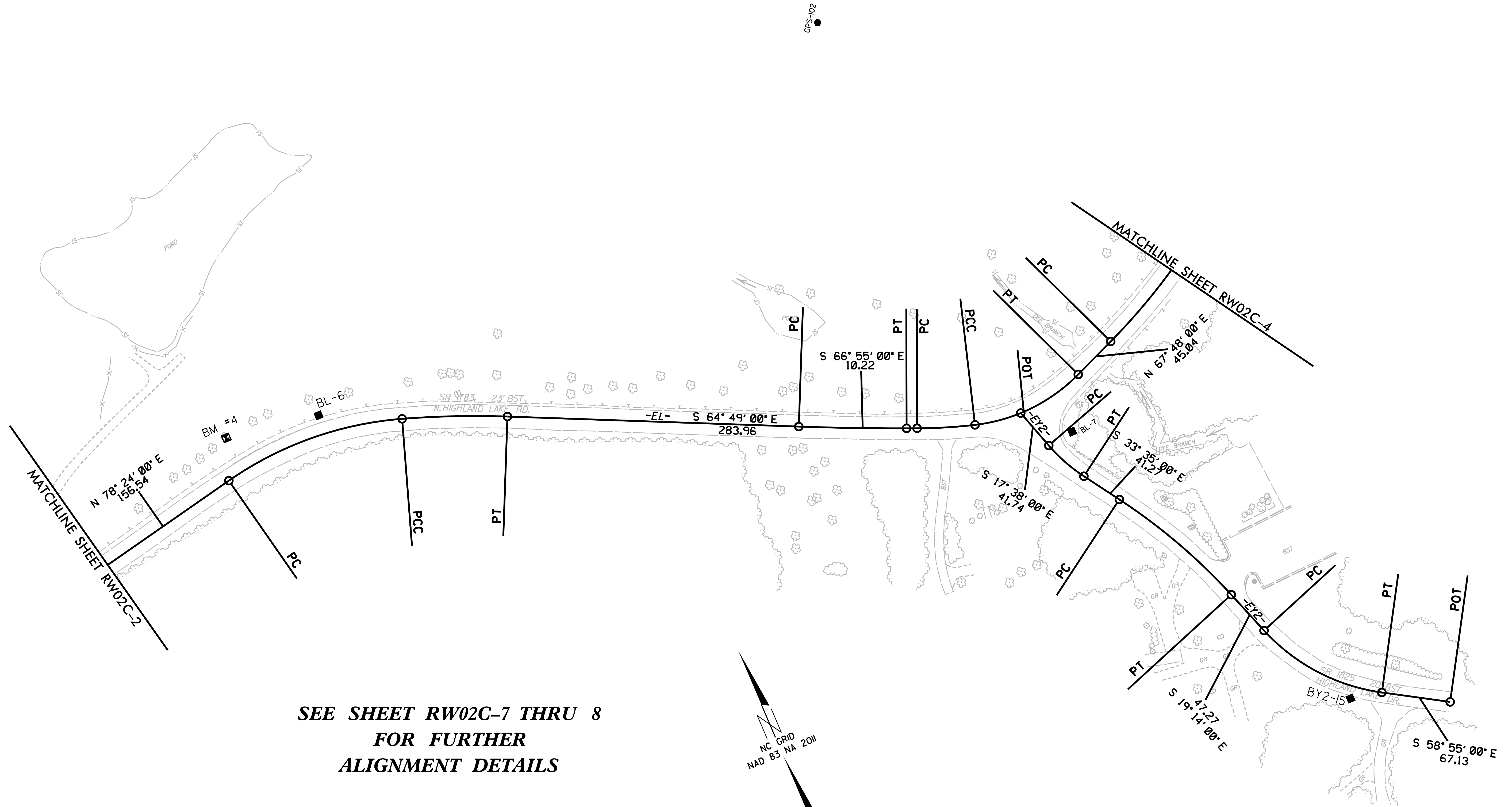
6/2/09

PROJECT REFERENCE NO.	SHEET NO.
U-5887	RW02C-3
Location and Surveys	
	

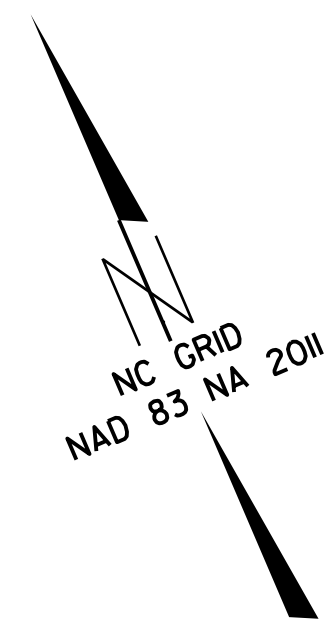
# SURVEY CONTROL SHEET

W/ EXISTING CENTERLINE ALIGNMENTS PRIOR TO CONSTRUCTION

REVISIONS



SEE SHEET RW02C-7 THRU 8  
FOR FURTHER  
ALIGNMENT DETAILS



### NOTES:

- PROJECT CONTROL WAS ESTABLISHED USING GNSS, THE GLOBAL NAVIGATION SATELLITE SYSTEM.
- THE SURVEY CONTROL DATA FOR THIS PROJECT HAS BEEN COMPILED FROM VARIOUS SOURCES. IF FURTHER INFORMATION REGARDING PROJECT CONTROL IS NEEDED, PLEASE CONTACT THE LOCATION AND SURVEYS UNIT.

I6-JUL-2019 14:37  
 V:\shvevi1\le\surveys\2019\31912-55 U-5887 Highland Lake RDW Stoke\Work\U5887-1s-RW02C-3.dgn  
 atabakova AT VDI-WKUEM-27