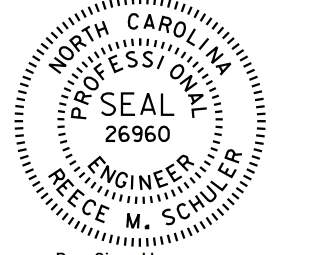
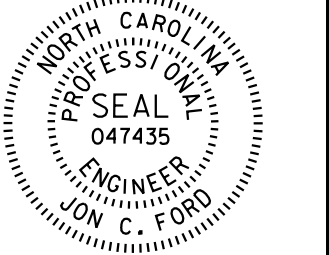
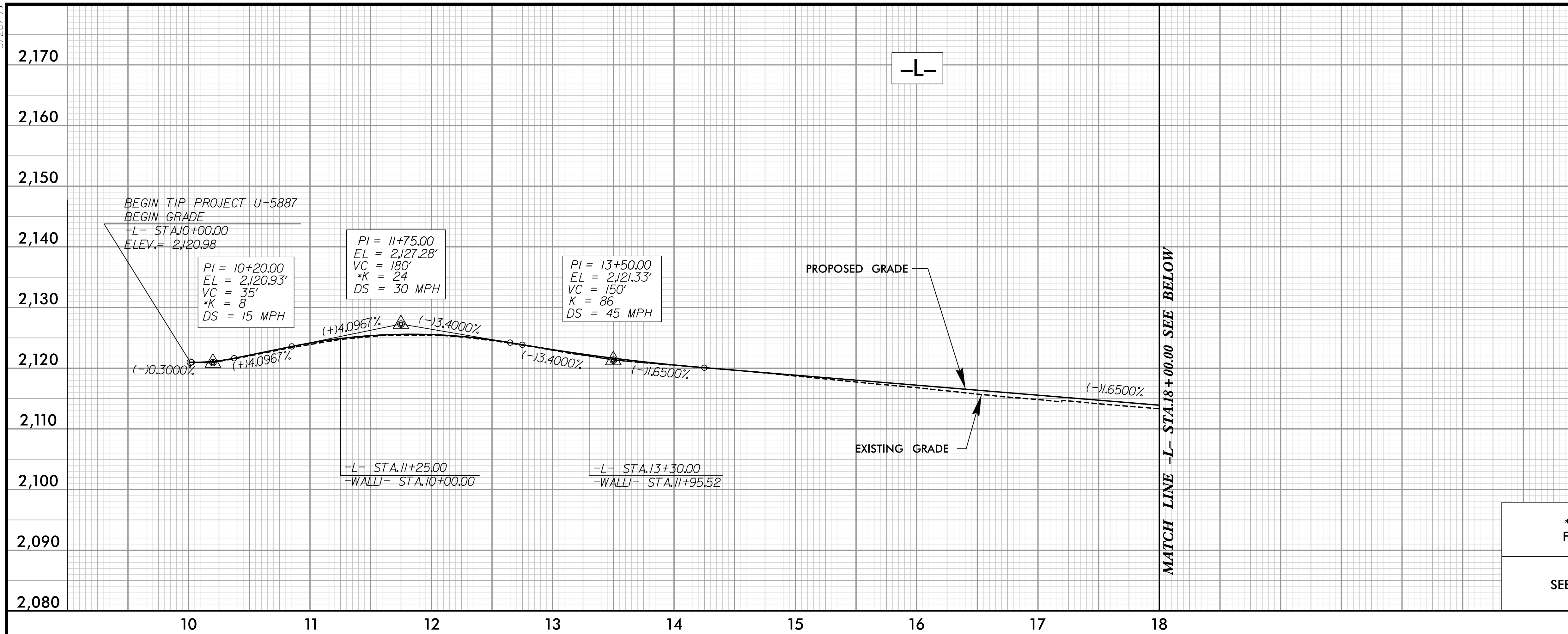


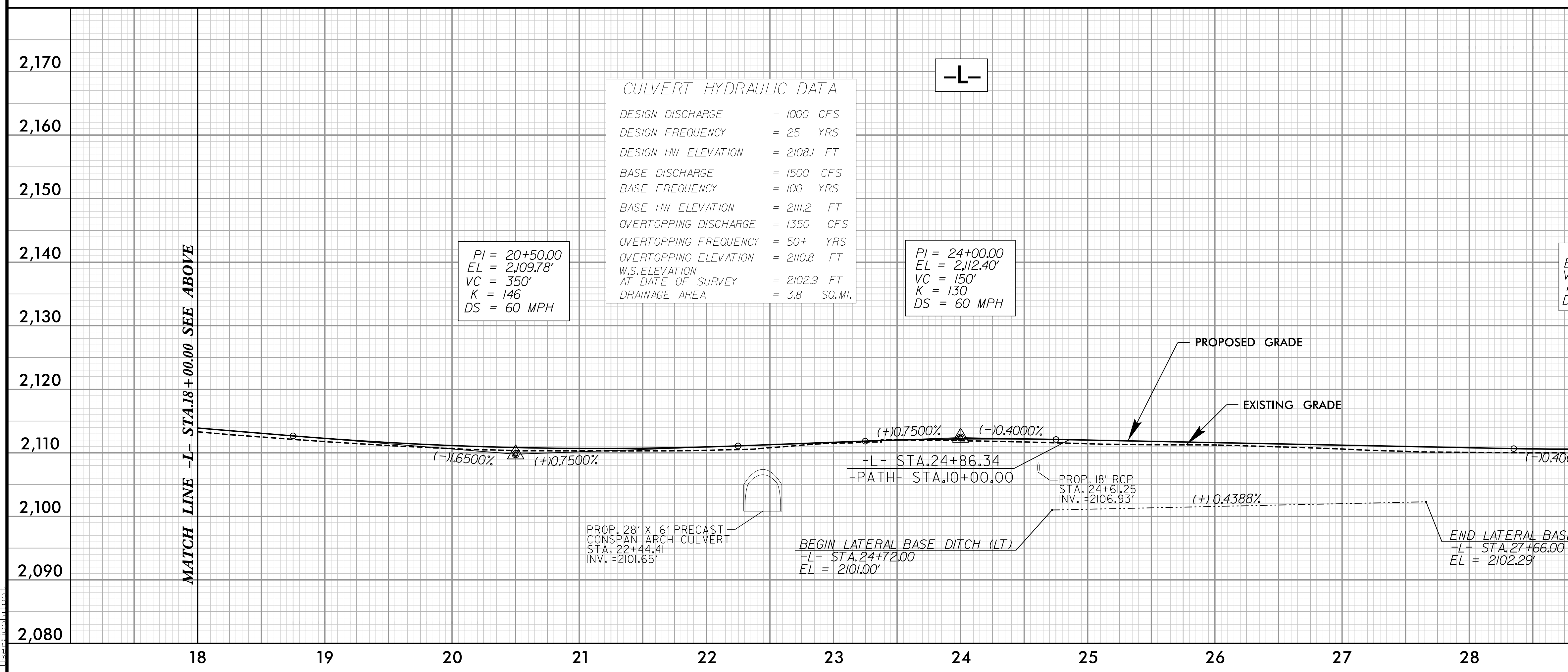
5/28/19

PROJECT REFERENCE NO. U-5887	SHEET NO. 9
ROADWAY DESIGN ENGINEER 	HYDRAULICS ENGINEER 
DOCUMENT NOT CONSIDERED FINAL UNLESS ALL SIGNATURES COMPLETED	



* DESIGN EXCEPTION FOR VERTICAL CURVES

SEE SHEET 4 FOR -L- PLAN



CULVERT HYDRAULIC DATA

DESIGN DISCHARGE	= 1000 CFS
DESIGN FREQUENCY	= 25 YRS
DESIGN HW ELEVATION	= 2108.1 FT
BASE DISCHARGE	= 1500 CFS
BASE FREQUENCY	= 100 YRS
BASE HW ELEVATION	= 2111.2 FT
OVERTOPPING DISCHARGE	= 1350 CFS
OVERTOPPING FREQUENCY	= 50+ YRS
OVERTOPPING ELEVATION	= 2110.8 FT
W.S. ELEVATION AT DATE OF SURVEY	= 2102.9 FT
DRAINAGE AREA	= 3.8 SQ. MI.

SEE SHEET 5 FOR -L- PLAN
SEE STRUCTURE PLANS FOR CULVERT

8/16/2020 2:03:48 PM
m:\sect\cch\proj\U-5887\p1_9.dgn