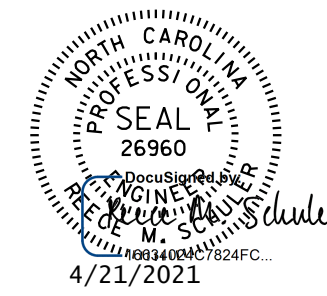
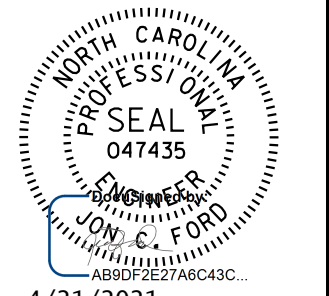
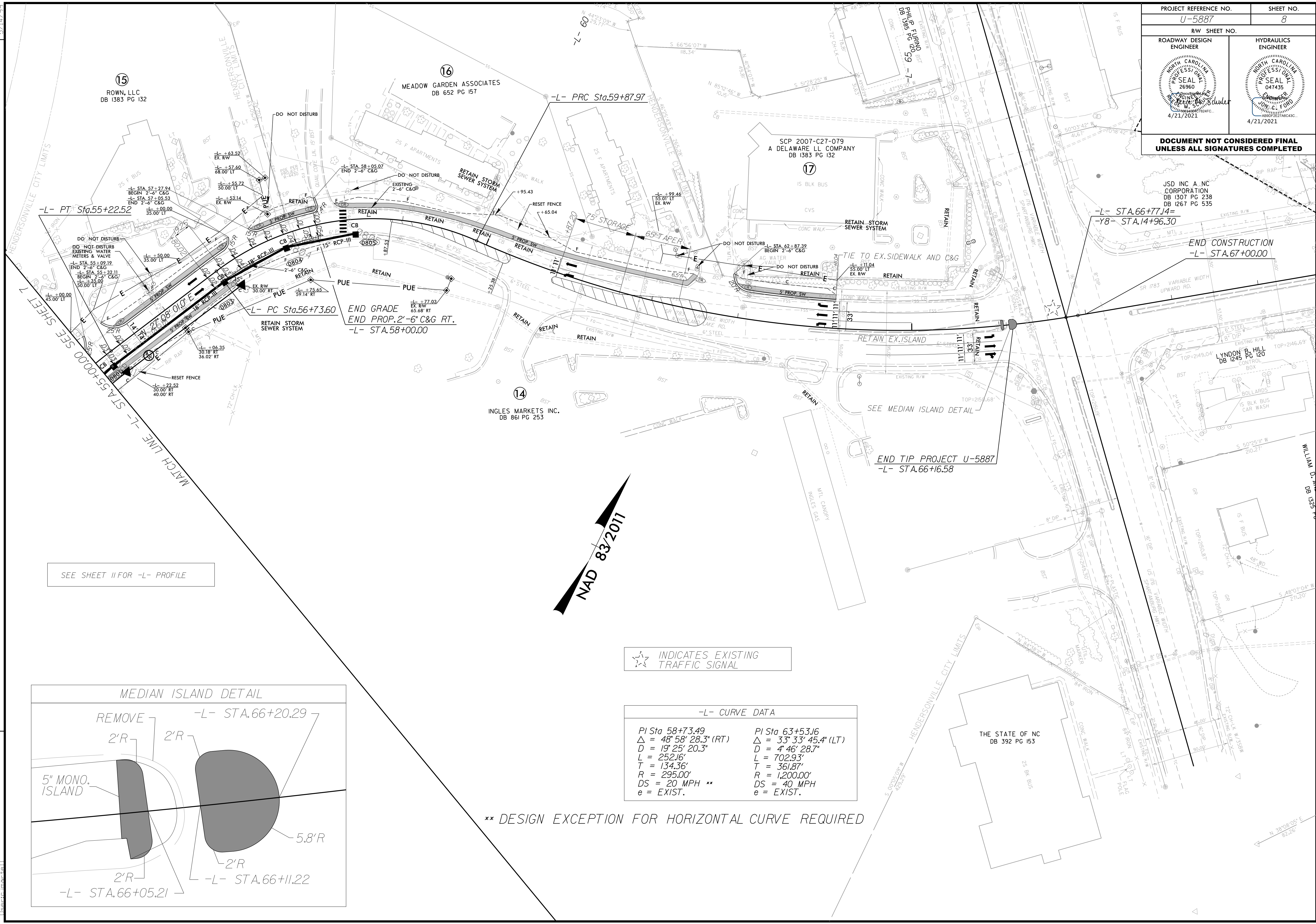


PROJECT REFERENCE NO. U-5887		SHEET NO. 8	
RW SHEET NO.			
ROADWAY DESIGN ENGINEER		HYDRAULICS ENGINEER	
 NORTH CAROLINA PROFESSIONAL ENGINEER SEAL 25960 JOHN M. SULLIVAN 4/21/2021		 NORTH CAROLINA PROFESSIONAL ENGINEER SEAL 047435 JOHN C. FORT 4/21/2021	
DOCUMENT NOT CONSIDERED FINAL UNLESS ALL SIGNATURES COMPLETED			

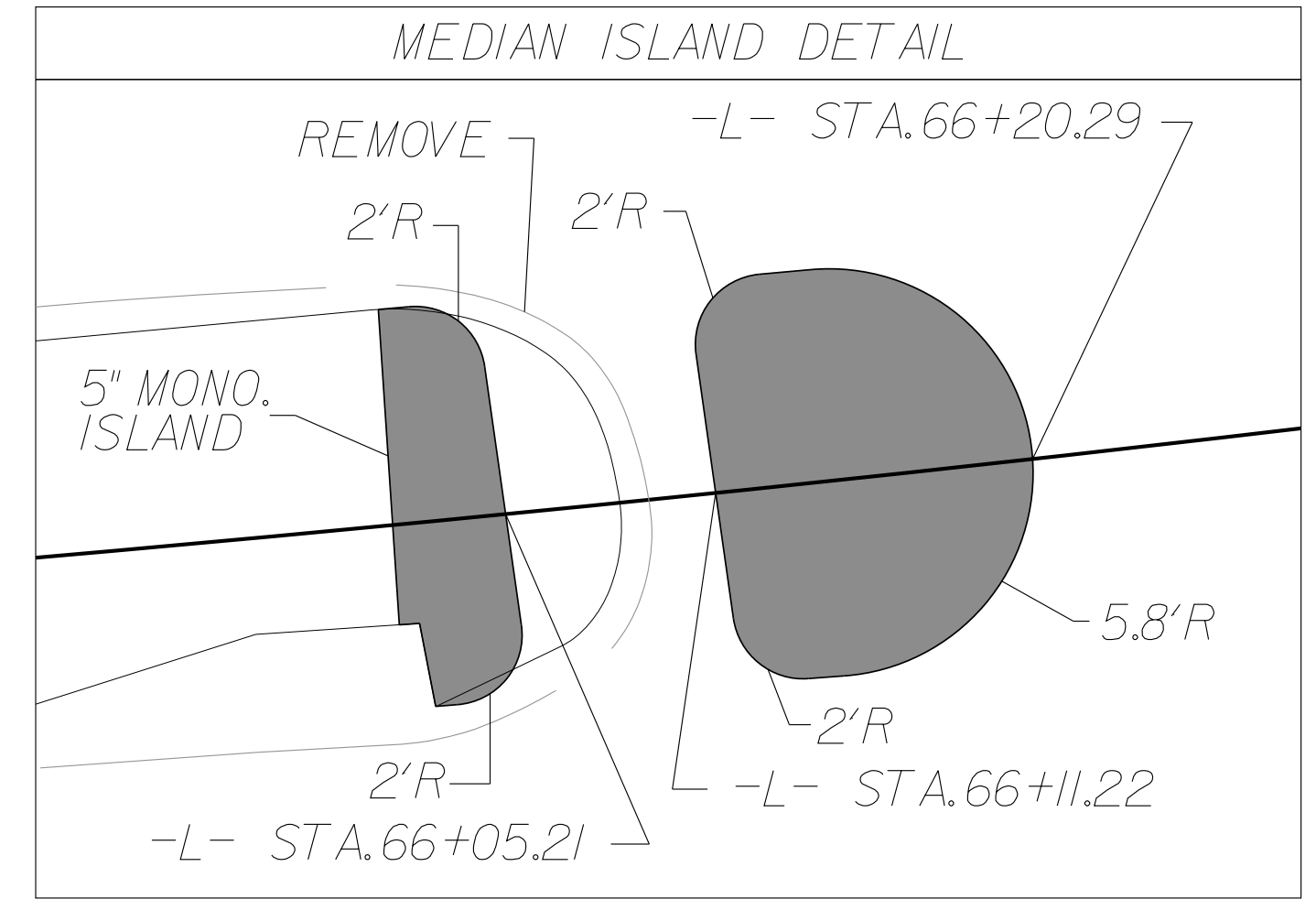


REVISIONS

SEE SHEET 11 FOR -L- PROFILE

NAD 83/2011

INDICATES EXISTING TRAFFIC SIGNAL



-L- CURVE DATA	
PI Sta 58+73.49	PI Sta 63+53.16
$\Delta = 48^{\circ} 58' 28.3"$ (RT)	$\Delta = 33^{\circ} 33' 45.4"$ (LT)
$D = 19^{\circ} 25' 20.3"$	$D = 4^{\circ} 46' 28.7"$
$L = 252.16'$	$L = 702.93'$
$T = 134.36'$	$T = 361.87'$
$R = 295.00'$	$R = 1200.00'$
$DS = 20$ MPH **	$DS = 40$ MPH
$e =$ EXIST.	$e =$ EXIST.

** DESIGN EXCEPTION FOR HORIZONTAL CURVE REQUIRED

3/10/2021 11:38:27 PM
C:\Users\jps877\OneDrive\Documents\jps877\ps877.dgn
jps877