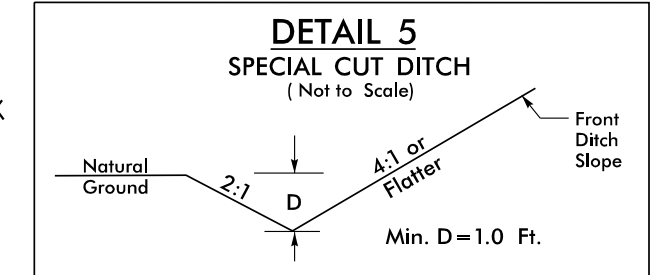
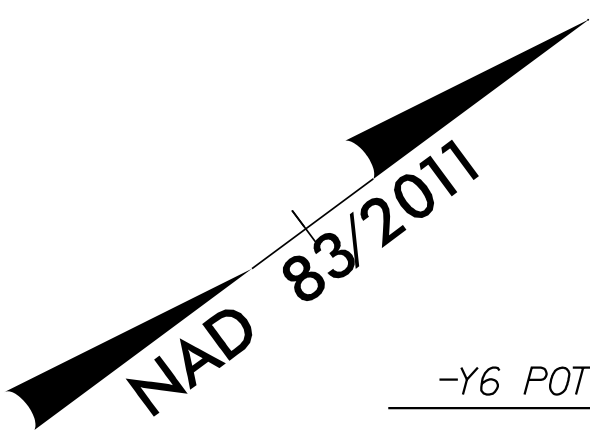


PROJECT REFERENCE NO. U-5887		SHEET NO. 7	
RW SHEET NO.			
ROADWAY DESIGN ENGINEER SEAL 26960 4/21/2021		HYDRAULICS ENGINEER SEAL 047435 4/21/2021	
<b>DOCUMENT NOT CONSIDERED FINAL UNLESS ALL SIGNATURES COMPLETED</b>			

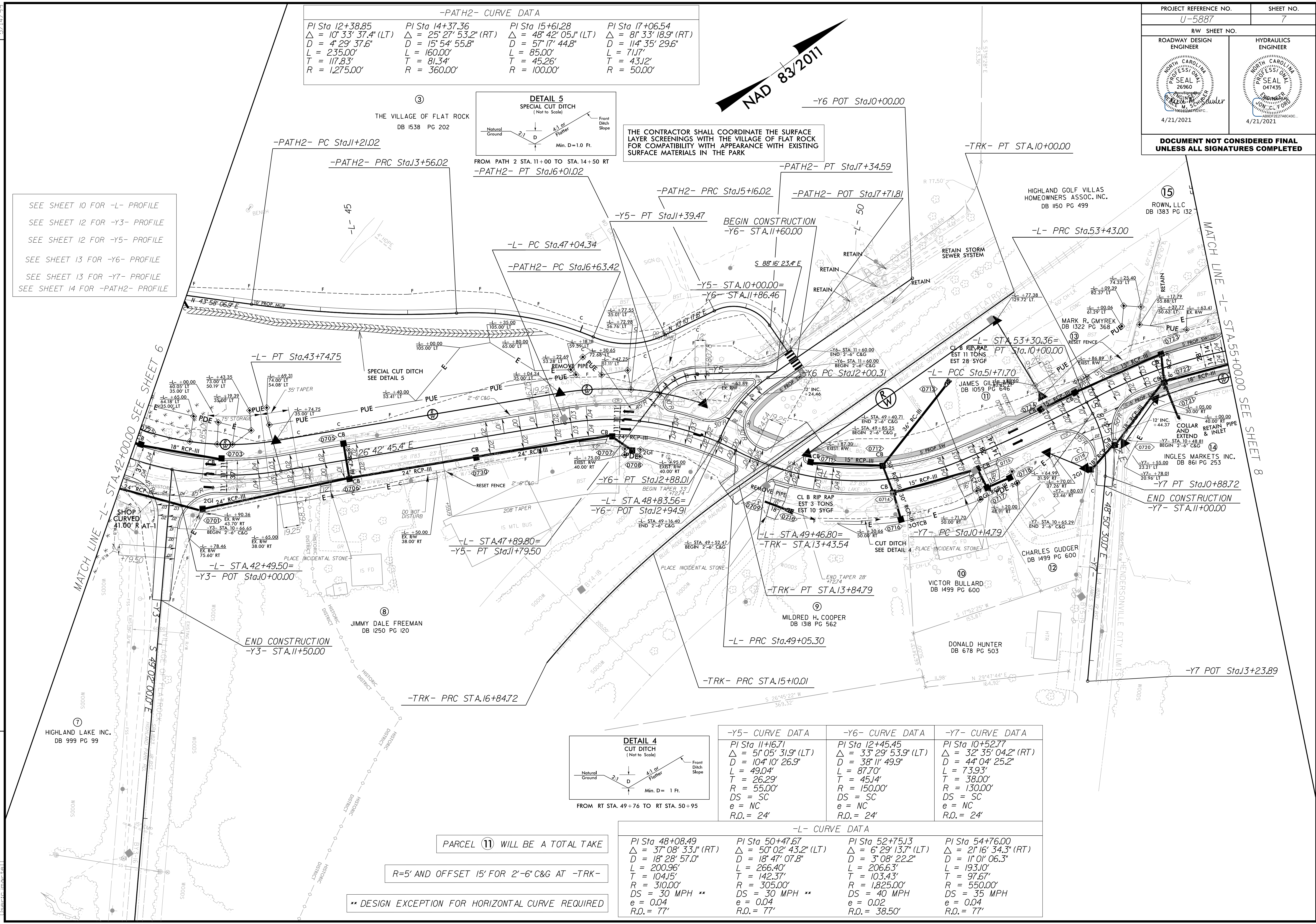
-PATH2- CURVE DATA

PI Sta 12+38.85 Δ = 10° 33' 37.4" (LT) D = 4' 29' 37.6" L = 235.00' T = 117.83' R = 1,275.00'	PI Sta 14+37.36 Δ = 25° 27' 53.2" (RT) D = 15' 54' 55.8" L = 160.00' T = 81.34' R = 360.00'	PI Sta 15+61.28 Δ = 48° 42' 05.1" (LT) D = 57' 17' 44.8" L = 85.00' T = 45.26' R = 100.00'	PI Sta 17+06.54 Δ = 8° 33' 18.9" (RT) D = 114' 35' 29.6" L = 71.17' T = 43.12' R = 50.00'
--	--	---	--



THE CONTRACTOR SHALL COORDINATE THE SURFACE LAYER SCREENINGS WITH THE VILLAGE OF FLAT ROCK FOR COMPATIBILITY WITH APPEARANCE WITH EXISTING SURFACE MATERIALS IN THE PARK

SEE SHEET 10 FOR -L- PROFILE  
SEE SHEET 12 FOR -Y3- PROFILE  
SEE SHEET 12 FOR -Y5- PROFILE  
SEE SHEET 13 FOR -Y6- PROFILE  
SEE SHEET 13 FOR -Y7- PROFILE  
SEE SHEET 14 FOR -PATH2- PROFILE



FROM PATH 2 STA. 11+00 TO STA. 14+50 RT  
-PATH2- PT Sta16+01.02

-PATH2- PT Sta17+34.59

-PATH2- PRC Sta15+16.02

-PATH2- POT Sta17+71.81

-Y5- PT Sta11+39.47

BEGIN CONSTRUCTION  
-Y6- STA.11+60.00

-L- PC Sta.47+04.34

-PATH2- PC Sta16+63.42

HIGHLAND GOLF VILLAS  
HOMEOWNERS ASSOC. INC.  
DB 1150 PG 499

-L- PRC Sta.53+43.00

ROWN, LLC  
DB 1383 PG 132

MARK R. GMYREK  
DB 1322 PG 368

JAMES GILBERT  
DB 1059 PG 646

INGLES MARKETS INC.  
DB 861 PG 253

CHARLES GUDGER  
DB 1499 PG 600

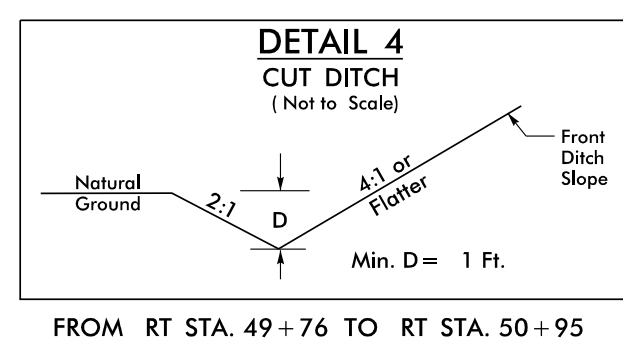
VICTOR BULLARD  
DB 1499 PG 600

DONALD HUNTER  
DB 678 PG 503

HIGHLAND LAKE INC.  
DB 999 PG 99

JIMMY DALE FREEMAN  
DB 1250 PG 120

MILDRED H. COOPER  
DB 1318 PG 562



-Y5- CURVE DATA

PI Sta 11+16.71 Δ = 5° 05' 31.9" (LT) D = 104' 10' 26.9" L = 49.04' T = 26.29' R = 55.00' DS = SC e = NC R.O. = 24'
---

-Y6- CURVE DATA

PI Sta 12+45.45 Δ = 33° 29' 53.9" (LT) D = 38' 11' 49.9" L = 49.04' T = 45.14' R = 150.00' DS = SC e = NC R.O. = 24'
--

-Y7- CURVE DATA

PI Sta 10+52.77 Δ = 32° 35' 04.2" (RT) D = 44' 04' 25.2" L = 73.93' T = 38.00' R = 130.00' DS = SC e = NC R.O. = 24'
--

-L- CURVE DATA

PI Sta 48+08.49 Δ = 37° 08' 33.1" (RT) D = 18' 28' 57.0" L = 200.96' T = 104.15' R = 310.00' DS = 30 MPH ** e = 0.04 R.O. = 77'	PI Sta 50+47.67 Δ = 50° 02' 43.2" (LT) D = 18' 47' 07.8" L = 266.40' T = 142.37' R = 305.00' DS = 30 MPH ** e = 0.04 R.O. = 77'	PI Sta 52+75.13 Δ = 6° 29' 13.7" (LT) D = 3' 08' 22.2" L = 206.63' T = 103.43' R = 1,825.00' DS = 40 MPH e = 0.02 R.O. = 38.50'	PI Sta 54+76.00 Δ = 2° 16' 34.3" (RT) D = 1' 01' 06.3" L = 193.10' T = 97.67' R = 550.00' DS = 35 MPH e = 0.04 R.O. = 77'
---	---	---	---

PARCEL 11 WILL BE A TOTAL TAKE

R=5' AND OFFSET 15' FOR 2'-6" C&G AT -TRK-

\*\* DESIGN EXCEPTION FOR HORIZONTAL CURVE REQUIRED

REVISIONS

3/10/2021 11:53:35 PM  
C:\p2\c\1158837\_PSH7.dgn  
1158837.dwg  
1158837.dwg