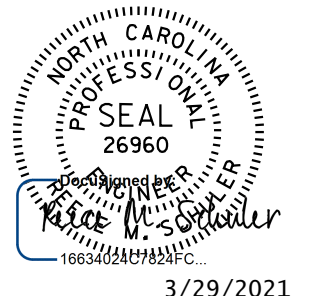
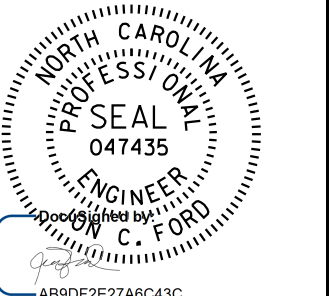
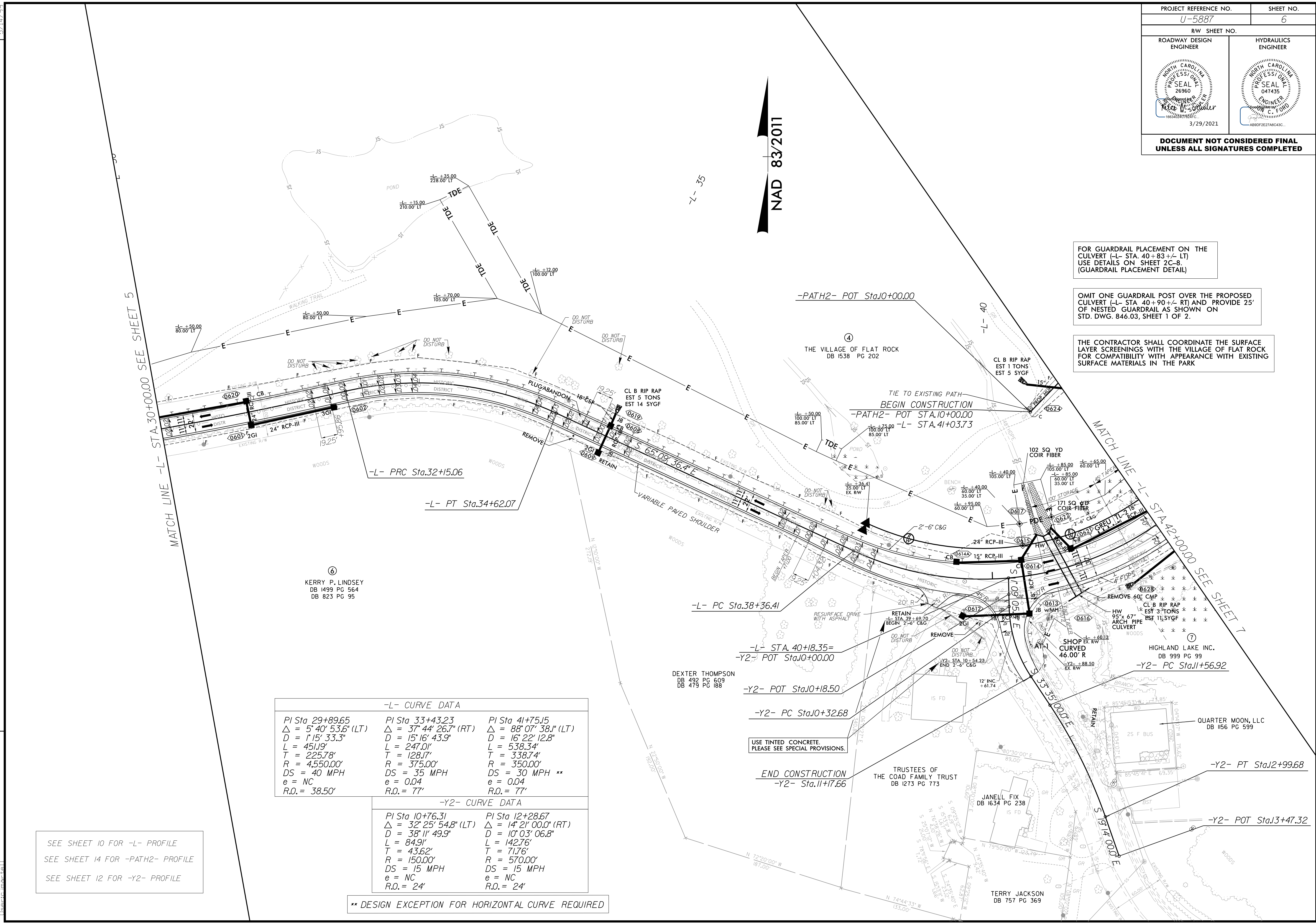


PROJECT REFERENCE NO. U-5887	SHEET NO. 6
RW SHEET NO.	
ROADWAY DESIGN ENGINEER	HYDRAULICS ENGINEER
	
3/29/2021	
DOCUMENT NOT CONSIDERED FINAL UNLESS ALL SIGNATURES COMPLETED	

NAD 83/2011



FOR GUARDRAIL PLACEMENT ON THE CULVERT (-L- STA. 40+83 +/- LT) USE DETAILS ON SHEET 2C-8. (GUARDRAIL PLACEMENT DETAIL)

OMIT ONE GUARDRAIL POST OVER THE PROPOSED CULVERT (-L- STA. 40+90 +/- RT) AND PROVIDE 25' OF NESTED GUARDRAIL AS SHOWN ON STD. DWG. 846.03, SHEET 1 OF 2.

THE CONTRACTOR SHALL COORDINATE THE SURFACE LAYER SCREENINGS WITH THE VILLAGE OF FLAT ROCK FOR COMPATIBILITY WITH APPEARANCE WITH EXISTING SURFACE MATERIALS IN THE PARK

-L- CURVE DATA		
PI Sta 29+89.65	PI Sta 33+43.23	PI Sta 41+75.15
$\Delta = 5^{\circ} 40' 53.6"$ (LT)	$\Delta = 37^{\circ} 44' 26.7"$ (RT)	$\Delta = 88^{\circ} 07' 38.1"$ (LT)
D = 1'15' 33.3"	D = 15' 16' 43.9"	D = 16' 22' 12.8"
L = 451.19'	L = 247.01'	L = 538.34'
T = 225.78'	L = 128.17'	T = 338.74'
R = 4,550.00'	R = 375.00'	R = 350.00'
DS = 40 MPH	DS = 35 MPH	DS = 30 MPH **
e = NC	e = 0.04	e = 0.04
R.O. = 38.50'	R.O. = 77'	R.O. = 77'

-Y2- CURVE DATA	
PI Sta 10+76.31	PI Sta 12+28.67
$\Delta = 32^{\circ} 25' 54.8"$ (LT)	$\Delta = 14^{\circ} 21' 00.0"$ (RT)
D = 38' 11' 49.9"	D = 10' 03' 06.8"
L = 84.91'	L = 142.76'
T = 43.62'	T = 71.76'
R = 150.00'	R = 570.00'
DS = 15 MPH	DS = 15 MPH
e = NC	e = NC
R.O. = 24'	R.O. = 24'

** DESIGN EXCEPTION FOR HORIZONTAL CURVE REQUIRED

SEE SHEET 10 FOR -L- PROFILE
SEE SHEET 14 FOR -PATH2- PROFILE
SEE SHEET 12 FOR -Y2- PROFILE

REVISIONS

5/14/99

3/29/2021 10:45:50 AM
pshe6.dgn
\\pshe6\imaster\