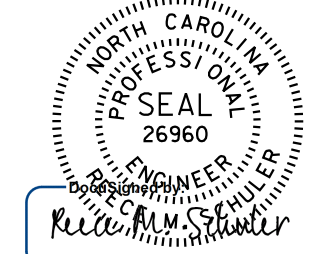
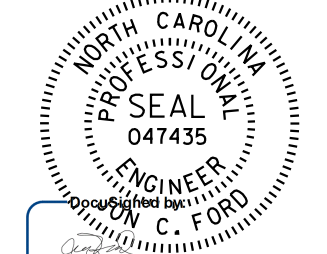
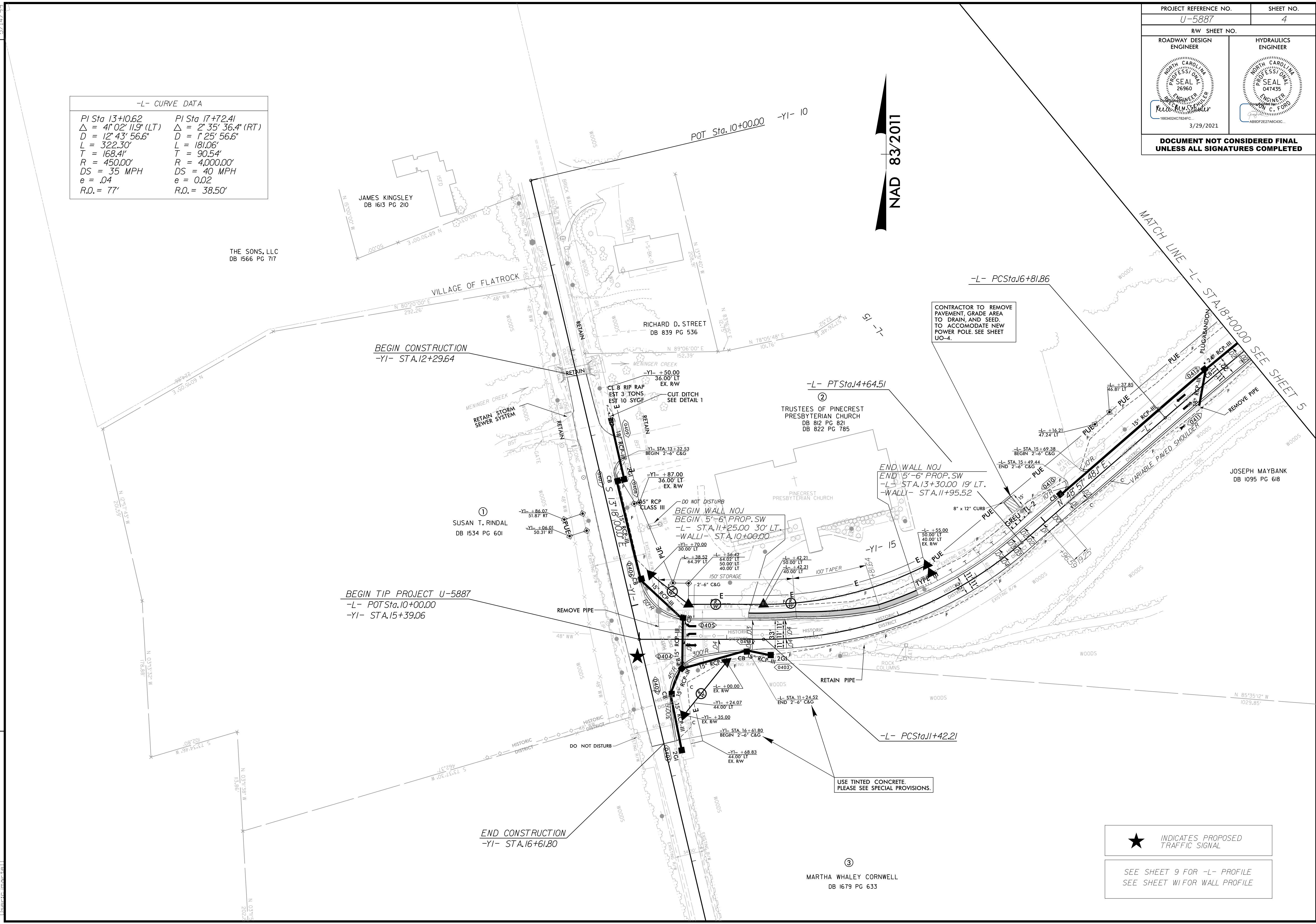


PROJECT REFERENCE NO. U-5887		SHEET NO. 4	
RW SHEET NO.			
ROADWAY DESIGN ENGINEER		HYDRAULICS ENGINEER	
			
3/29/2021			
DOCUMENT NOT CONSIDERED FINAL UNLESS ALL SIGNATURES COMPLETED			

-L- CURVE DATA	
PI Sta 13+10.62	PI Sta 17+72.41
$\Delta = 41^{\circ}02'11.9"$ (LT)	$\Delta = 2^{\circ}35'36.4"$ (RT)
D = 12'43'56.6"	D = 1'25'56.6"
L = 322.30'	L = 181.06'
T = 168.41'	T = 90.54'
R = 450.00'	R = 4000.00'
DS = 35 MPH	DS = 40 MPH
e = .04	e = 0.02
R.O. = 77'	R.O. = 38.50'

NAD 83/2011

REVISIONS



CONTRACTOR TO REMOVE PAVEMENT, GRADE AREA TO DRAIN, AND SEED. TO ACCOMMODATE NEW POWER POLE. SEE SHEET UO-4.

END WALL NO.1
END 5'-6" PROP. SW
-L- STA.13+30.00 19' LT.
-WALL- STA.11+95.52

BEGIN TIP PROJECT U-5887
-L- POT Sta.10+00.00
-YI- STA.15+39.06

USE TINTED CONCRETE. PLEASE SEE SPECIAL PROVISIONS.

★ INDICATES PROPOSED TRAFFIC SIGNAL

SEE SHEET 9 FOR -L- PROFILE
SEE SHEET W1 FOR WALL PROFILE

3/29/2021 10:18:01 AM
C:\Users\jstall\OneDrive\Documents\U-5887\Drawings\PSH4.dgn

5/14/2021

3/29/2021 10:18:01 AM
C:\Users\jstall\OneDrive\Documents\U-5887\Drawings\PSH4.dgn