

TIP PROJECT: B-4931

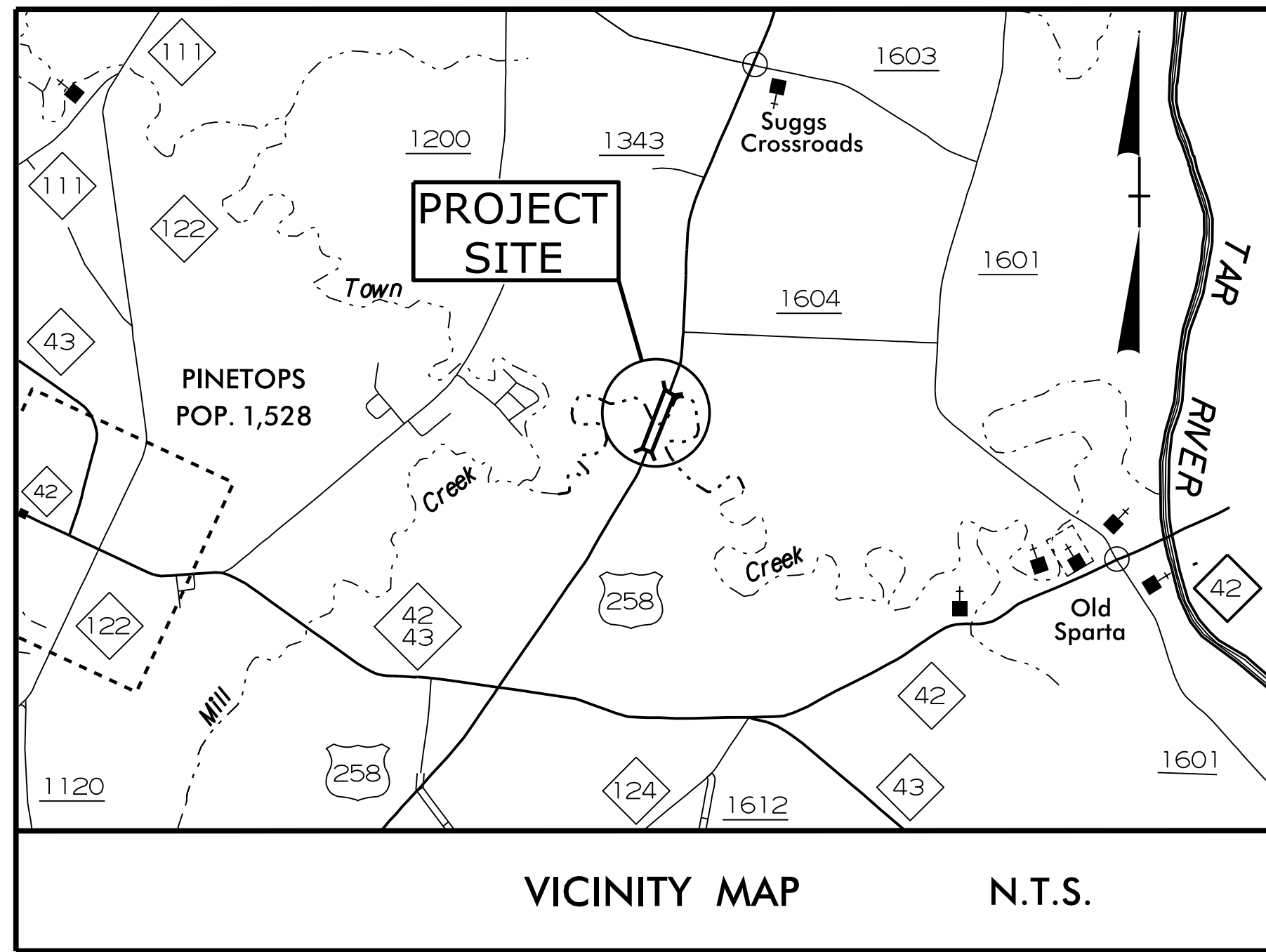
CONTRACT: C204518

STATE OF NORTH CAROLINA

DIVISION OF HIGHWAYS

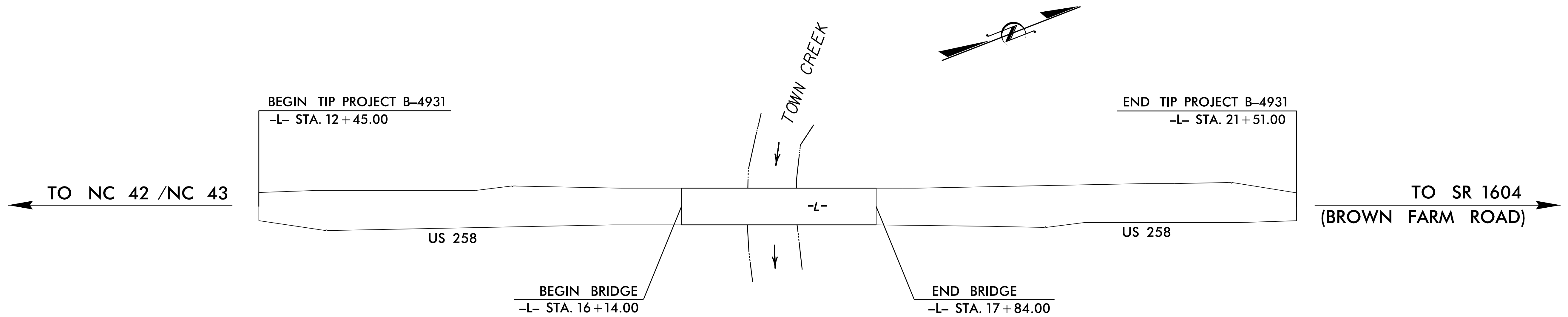
EDGECOMBE COUNTY

STATE	STATE PROJECT REFERENCE NO.	SHEET NO.	TOTAL SHEETS
N.C.	B-4931		
STATE PROJ. NO.	P.A. PROJ. NO.	DESCRIPTION	
40134.1.1	-	P.E.	
40134.2.1	-	ROWUTIL.	
40134.3.1	-	CONST.	

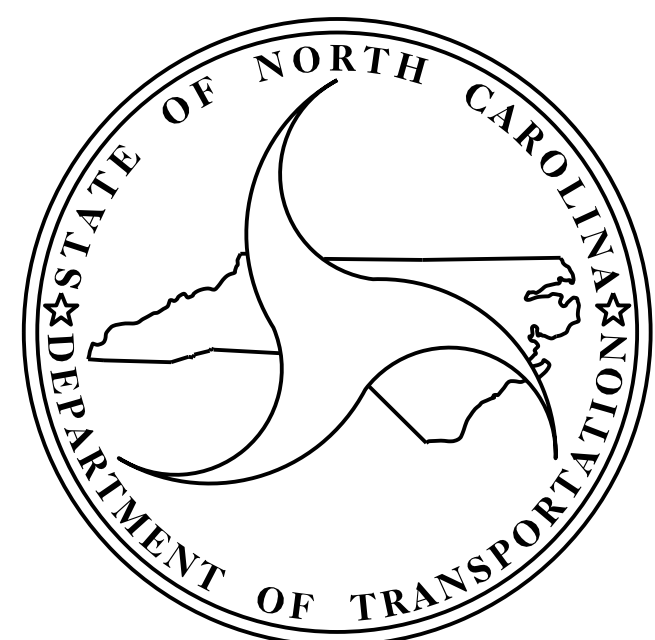


LOCATION: REPLACE BRIDGE NO. 22 OVER TOWN CREEK ON US 258

TYPE OF WORK: GRADING, DRAINAGE, PAVING, AND STRUCTURE



STRUCTURE



DESIGN DATA

ADT 2020 = 3,100
 ADT 2040 = 4,100
 K = 10 %
 D = 55 %
 T = 8 % **
 * V = 60 MPH
 ** (TTST 3 %, DUAL 5 %)
 FUNC CLASS = MINOR ARTERIAL
 REGIONAL TIER

PROJECT LENGTH

LENGTH ROADWAY TIP PROJECT B-4931 = 0.140 MILES
 LENGTH STRUCTURE TIP PROJECT B-4931 = 0.032 MILES
 TOTAL LENGTH TIP PROJECT B-4931 = 0.172 MILES

Prepared In the Office of:
DIVISION OF HIGHWAYS
 STRUCTURES MANAGEMENT UNIT
 1000 BIRCH RIDGE DR.
 RALEIGH, N.C. 27610

2018 STANDARD SPECIFICATIONS

LETTING DATE :

May 18, 2021

KRISTY L. W. ALFORD, P.E., CPM
 PROJECT ENGINEER

A. G. ABRAHA, P.E.
 PROJECT DESIGN ENGINEER