

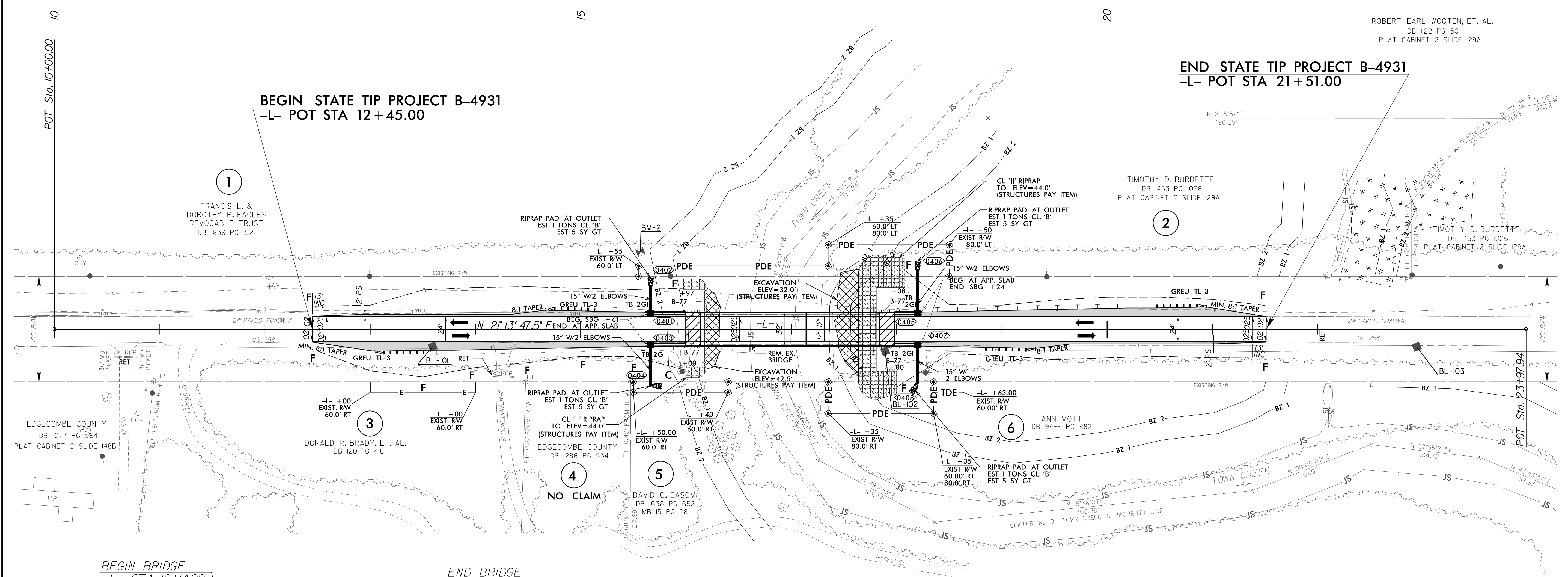
8/17/99

PROJECT REFERENCE NO. <i>B-4931</i>		SHEET NO. 4	
RW SHEET NO.			
ROADWAY DESIGN ENGINEER		HYDRAULICS ENGINEER	
3/13/2020		3/13/2020	
DOCUMENT NOT CONSIDERED FINAL UNLESS ALL SIGNATURES COMPLETED			

ROBERT EARL WOOTEN, ET. AL.
DB 1122 PG 50
PLAT CABINET 2 SLIDE 129A

END STATE TIP PROJECT B-4931
-L- POT STA 21+51.00

BEGIN STATE TIP PROJECT B-4931
-L- POT STA 12+45.00

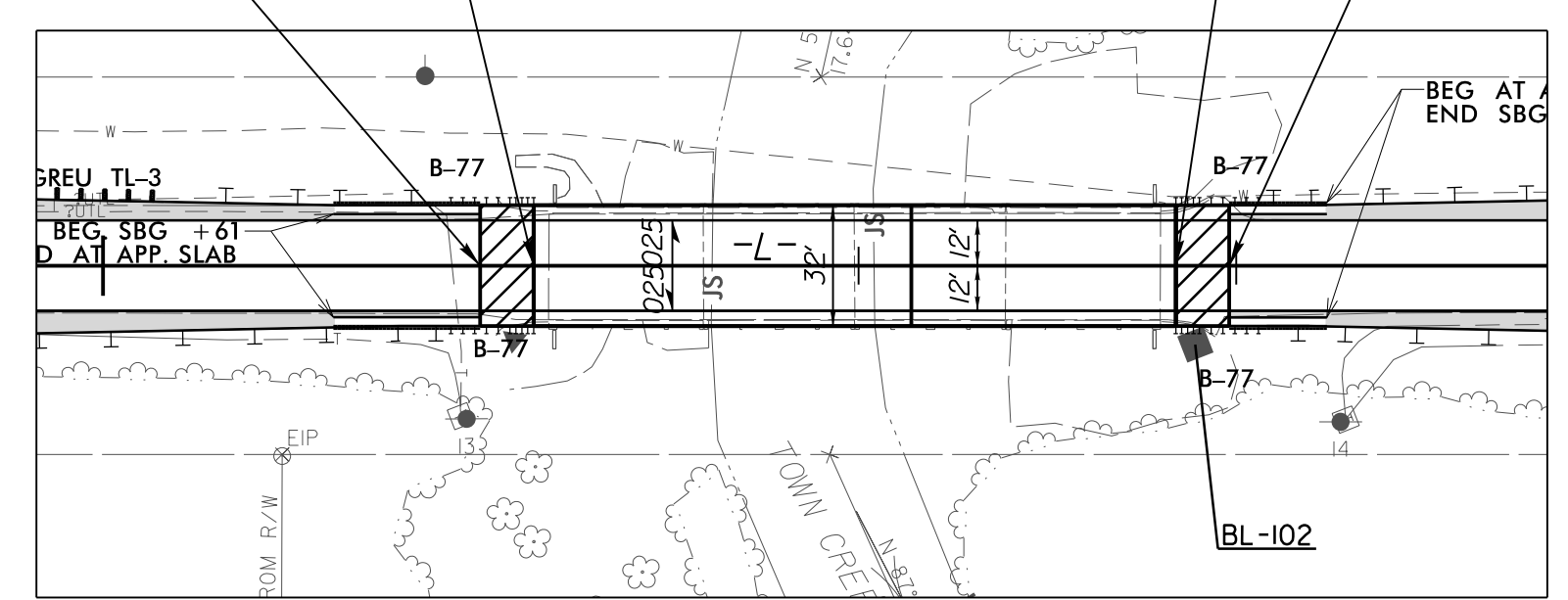


BEGIN BRIDGE
-L- STA 16+14.00

END BRIDGE
-L- STA 17+84.00

BEGIN APPR. SLAB
-L- STA 15+99.83

END APPR. SLAB
-L- STA 17+98.17



INSET A

FOR -L- PROFILE SEE SHEET 5
FOR STRUCTURE PLANS SEE SHEETS S-1 TO S-30

13-MAR-2020 15:38
M:\2018\1801945\19 B-4931\Roadway\Proj\B-4931_Rdwy_psh.dgn
SUSAN BARNETT