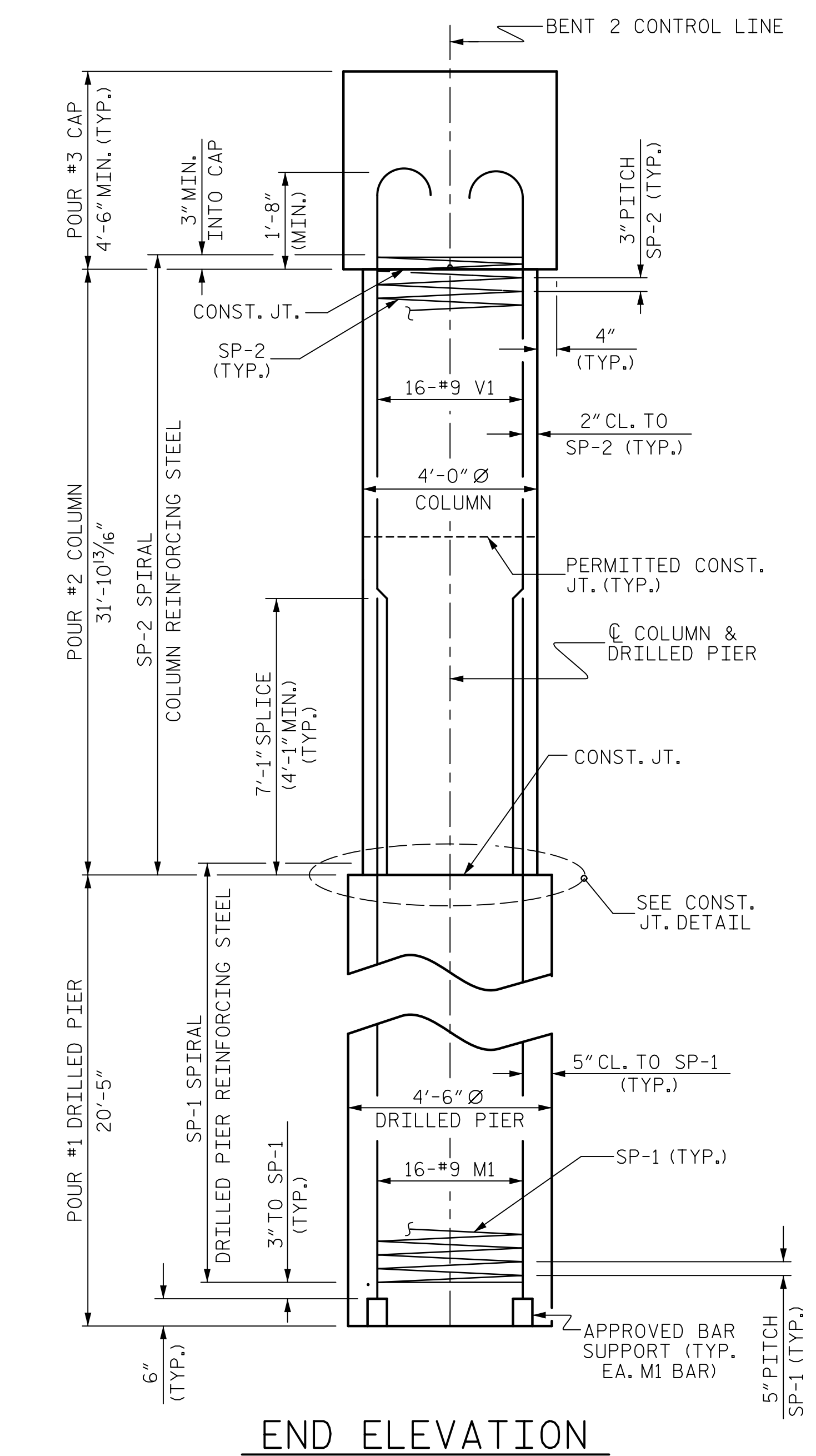
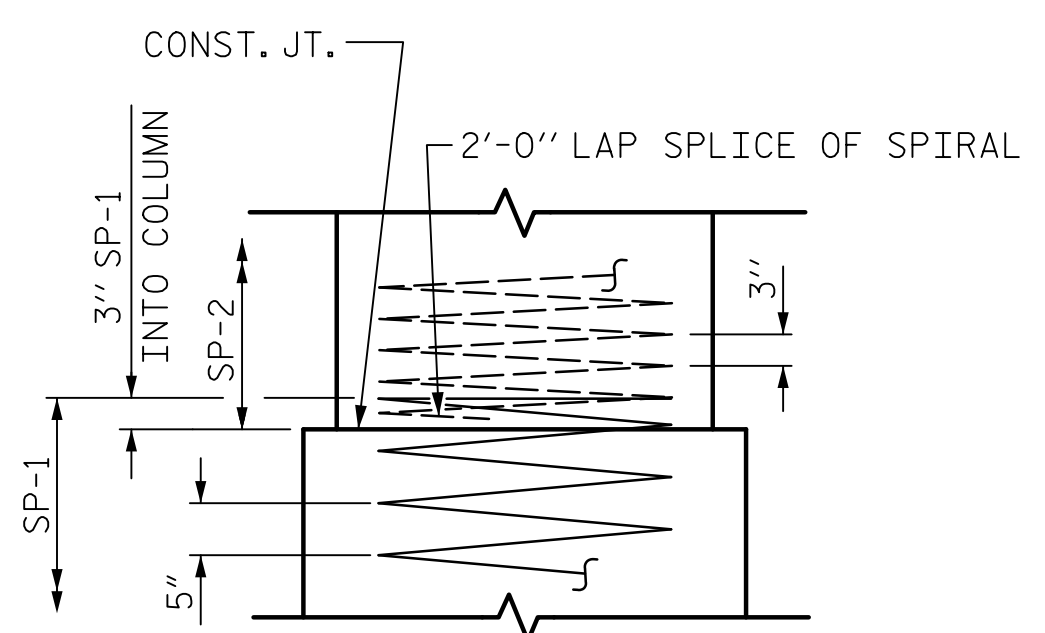


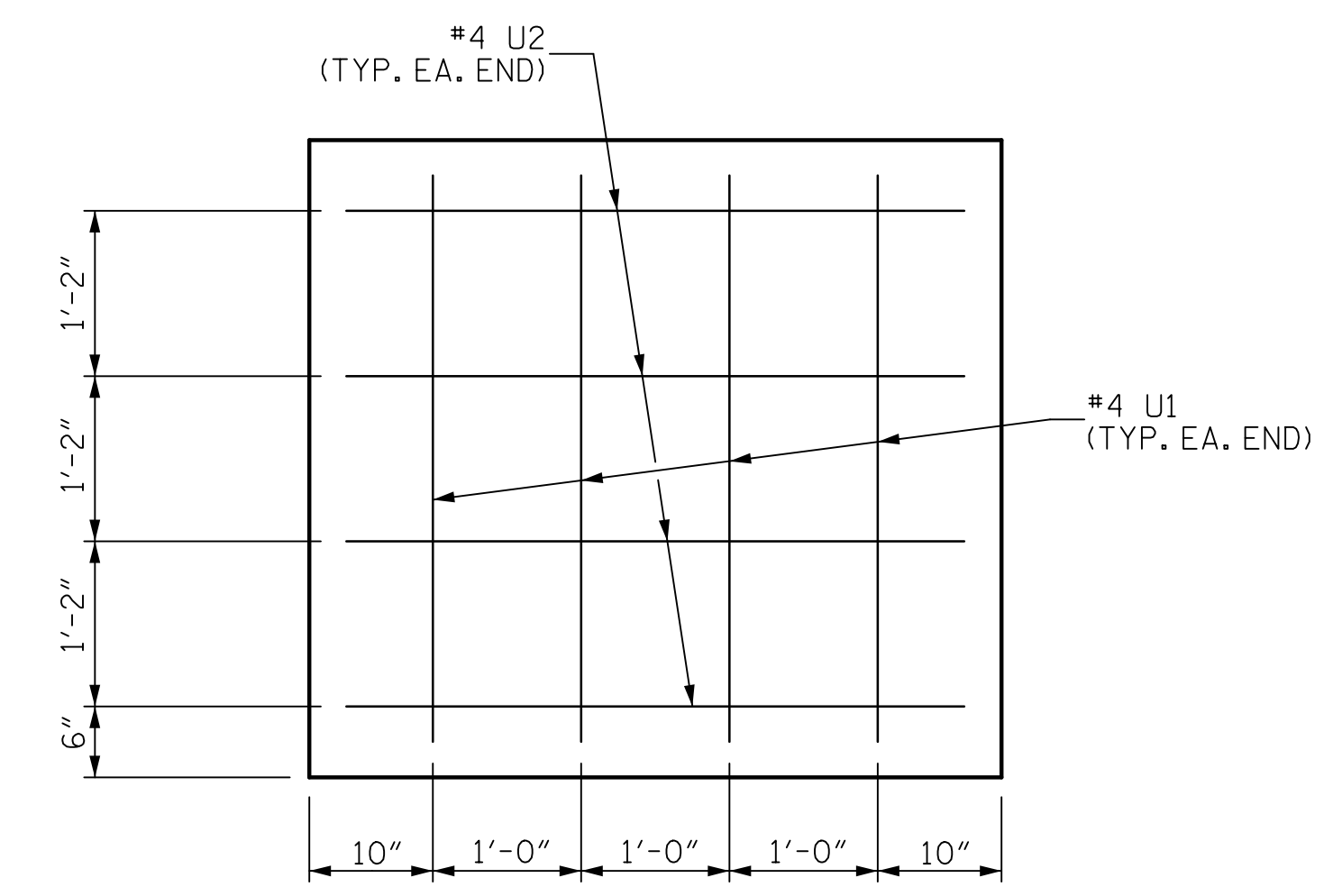
PLAN OF DRILLED PIERS & COLUMNS



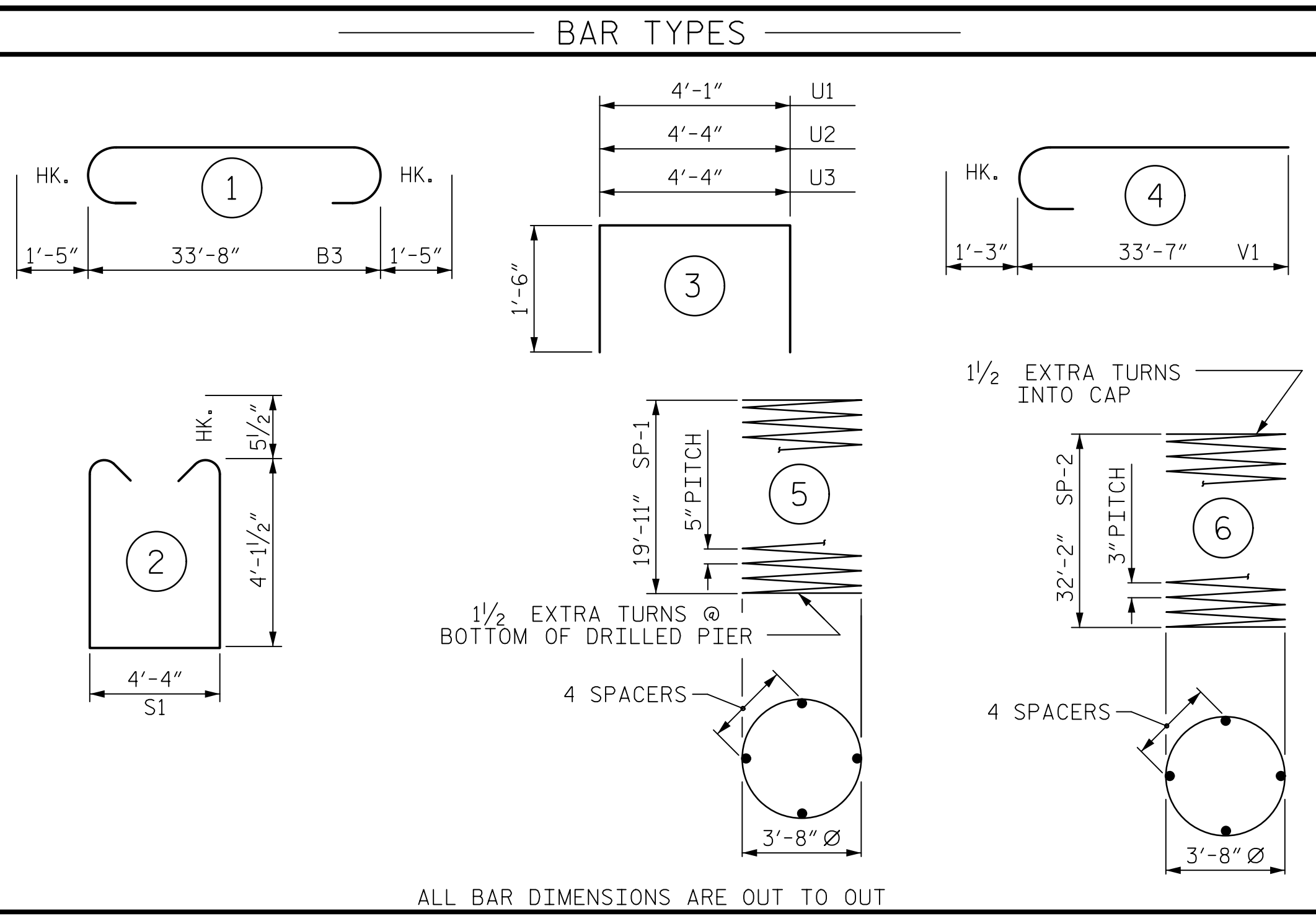
END ELEVATION



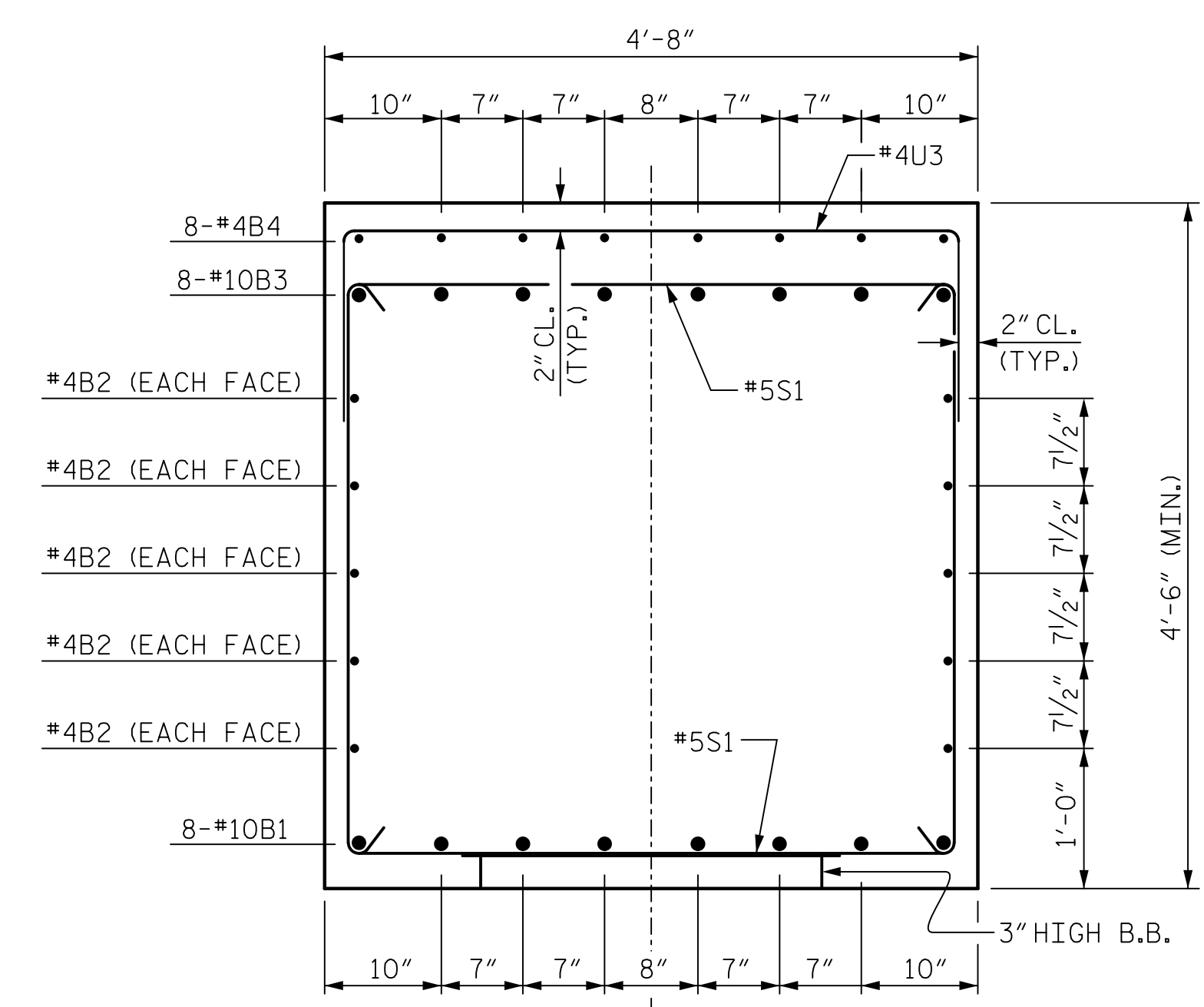
CONSTRUCTION JOINT DETAIL



SECTION X-X
(TYPICAL EACH END)



ALL BAR DIMENSIONS ARE OUT TO OUT



SECTION A-A

BILL OF MATERIAL					
BENT NO. 2					
BAR	NO.	SIZE	TYPE	LENGTH	WEIGHT
B1	8	#10	STR	33'-8"	1159
B2	10	#4	STR	33'-8"	225
B3	8	#10	1	36'-6"	1256
B4	8	#4	STR	3'-4"	18
M1	48	#9	STR	27'-3"	4447
S1	60	#5	2	13'-6"	845
U1	8	#4	3	7'-1"	38
U2	8	#4	3	7'-4"	39
U3	35	#4	3	7'-4"	171
V1	48	#9	4	34'-10"	5685
REINFORCING STEEL					13,883 LBS.
SP-1	3	*	5	564'-2"	1764
SP-2	3	**	6	1486'-6"	2729
SPIRAL COLUMN REINFORCING STEEL					4,493 LBS.
* THE SP-1 SPIRAL REINFORCING STEEL SHALL BE W31 OR D-31 COLD DRAWN WIRE OR #5 PLAIN OR DEFORMED BAR					
* THE SP-2 SPIRAL REINFORCING STEEL SHALL BE W20 OR D-20 COLD DRAWN WIRE OR #4 PLAIN OR DEFORMED BAR					
CLASS A CONCRETE BREAKDOWN					
POUR #2 (COLUMNS)					44.5 C.Y.
POUR #3 (CAP)					27.2 C.Y.
TOTAL CLASS A CONCRETE					71.7 C.Y.
DRILLED PIERS:					
DRILLED PIER CONCRETE POUR #1 (DRILLED PIERS)					36.0 C.Y.
4'-6" Ø DRILLED PIER NOT IN SOIL					48.00 LIN. FT.
4'-6" Ø DRILLED PIER IN SOIL					13.20 LIN. FT.
PERMANENT STEEL CASING FOR 4'-6" Ø DRILLED PIERS					22.20 LIN. FT.
CSL TUBES					244.8 LIN. FT.

PROJECT NO. B-4407
 ANSON/STANLY COUNTY
 STATION: 32+31.61 -L-
 SHEET 2 OF 2

V&M
 Vaughn & Melton
 Consulting Engineers
 Asheville, North Carolina
 828-253-2786
 Raleigh, NC 919-977-9455
 Charlotte, NC 704-357-0488
 Atlanta, GA 770-627-3590
 Copyright © 2006 Vaughn & Melton, Inc. All Rights Reserved



DOCUMENT NOT CONSIDERED FINAL UNLESS ALL SIGNATURES COMPLETED

DWN. BY: WDC
 CHKD. BY: PRG
 DES. EGR. OF RECORD: PRG
 DATE: 10/2020
 DATE: 10/2020
 DATE: 10/2020

REVISIONS					
NO.	BY:	DATE:	NO.	BY:	DATE:
1			3		
2			4		

SHEET NO. S-38
 TOTAL SHEETS 45

W&M:\Projects\Transportation\32-09_B4407\Structures\Final Plans\075_LB-4407_SML_B72-538.dgn
 DATE: 05-04-2021 05:54 PM on Fri, February 05, 2021
 TIME: 05:54 PM on Fri, February 05, 2021