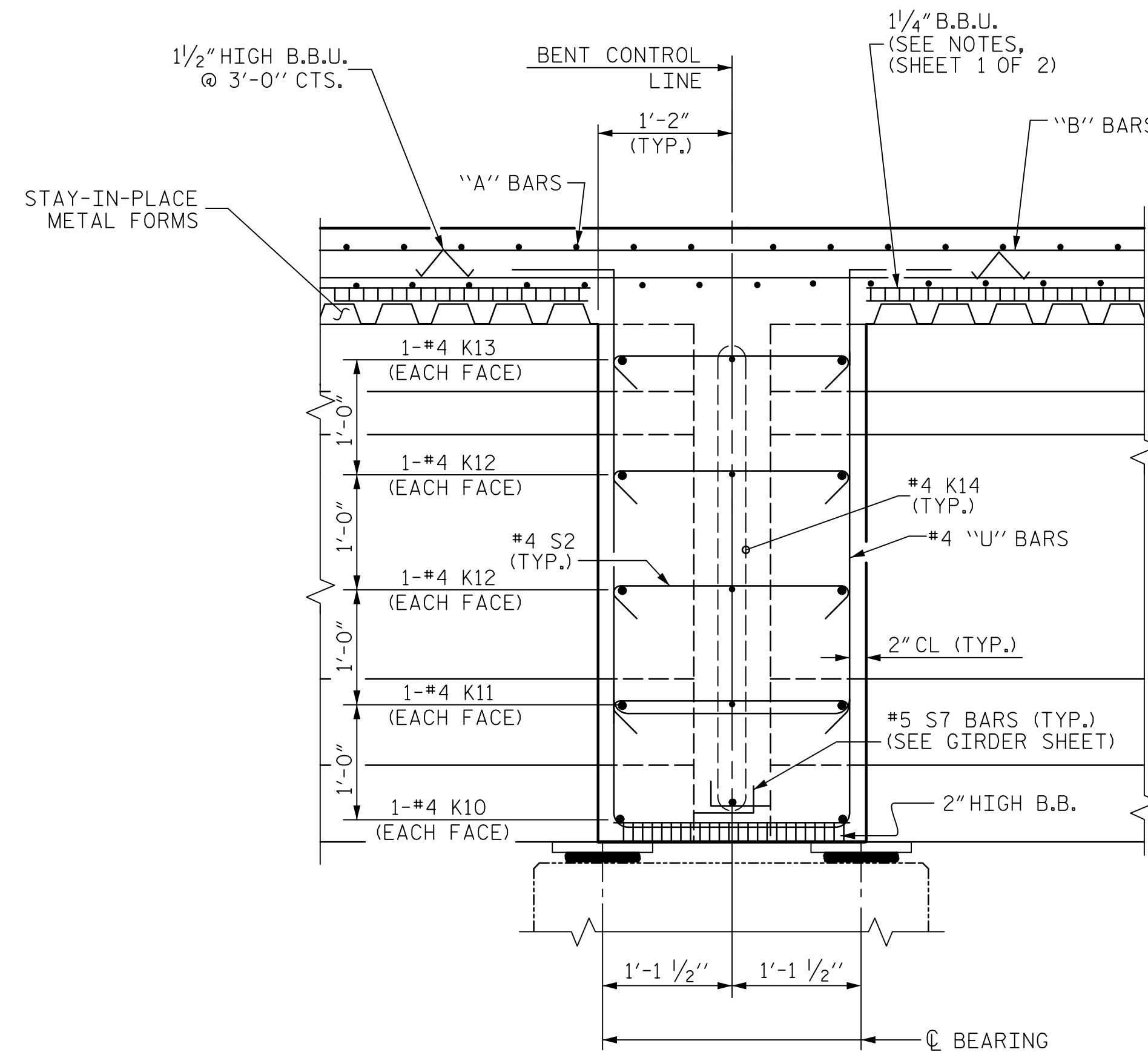
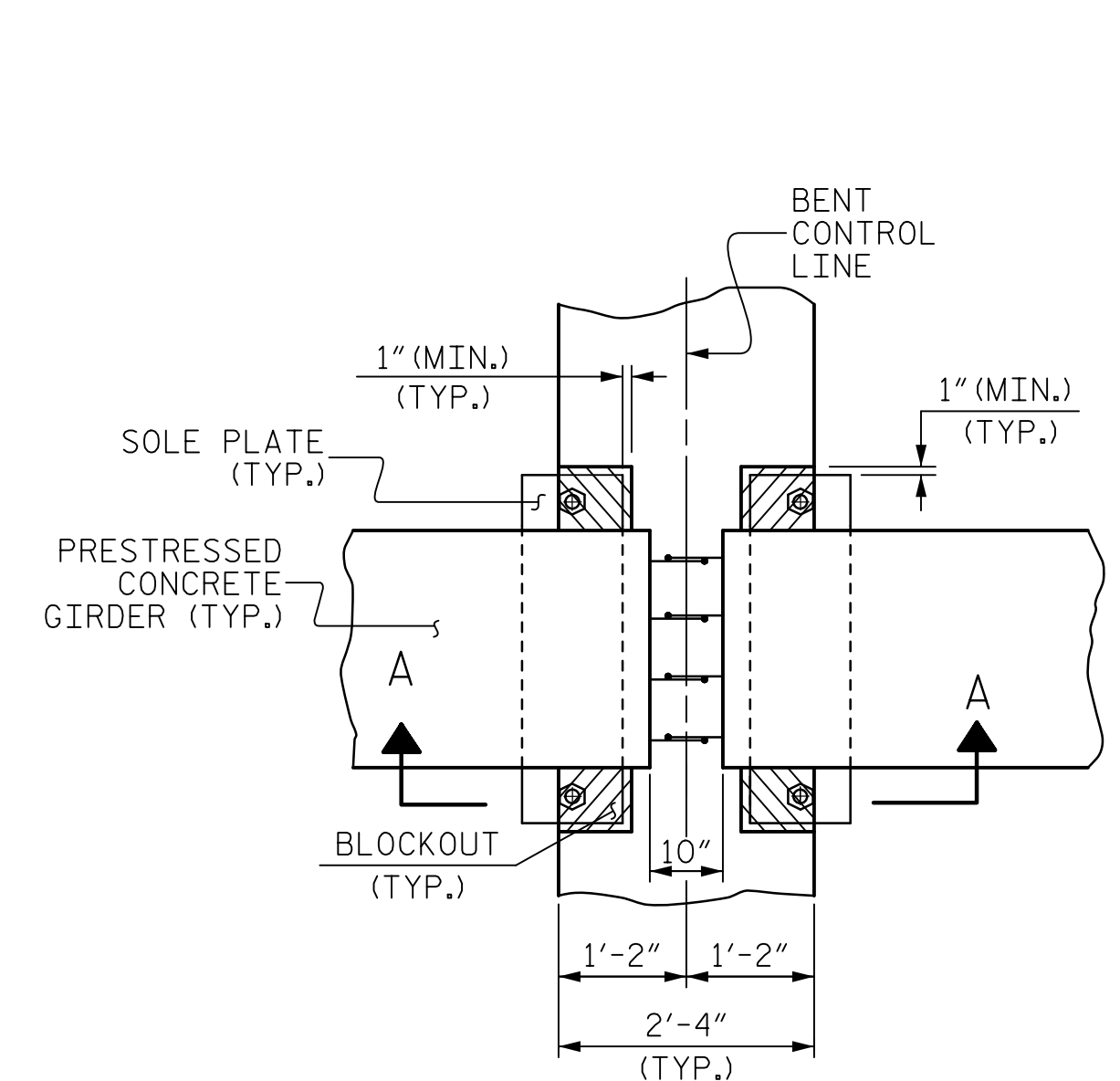


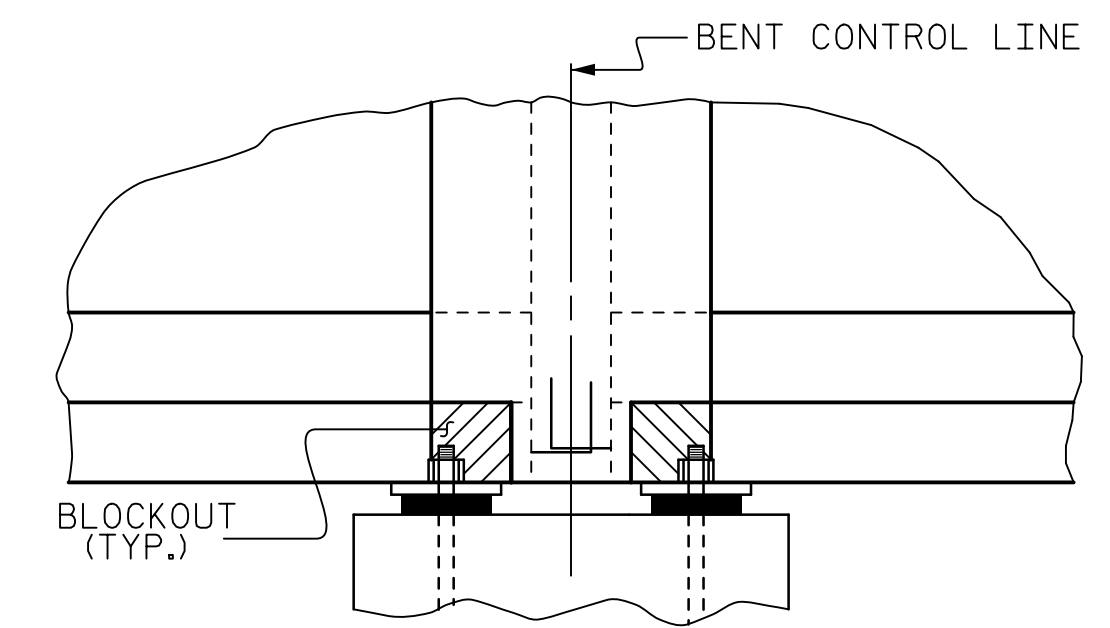
SECTION @ END BENTS



SECTION @ BENTS 2 & 3



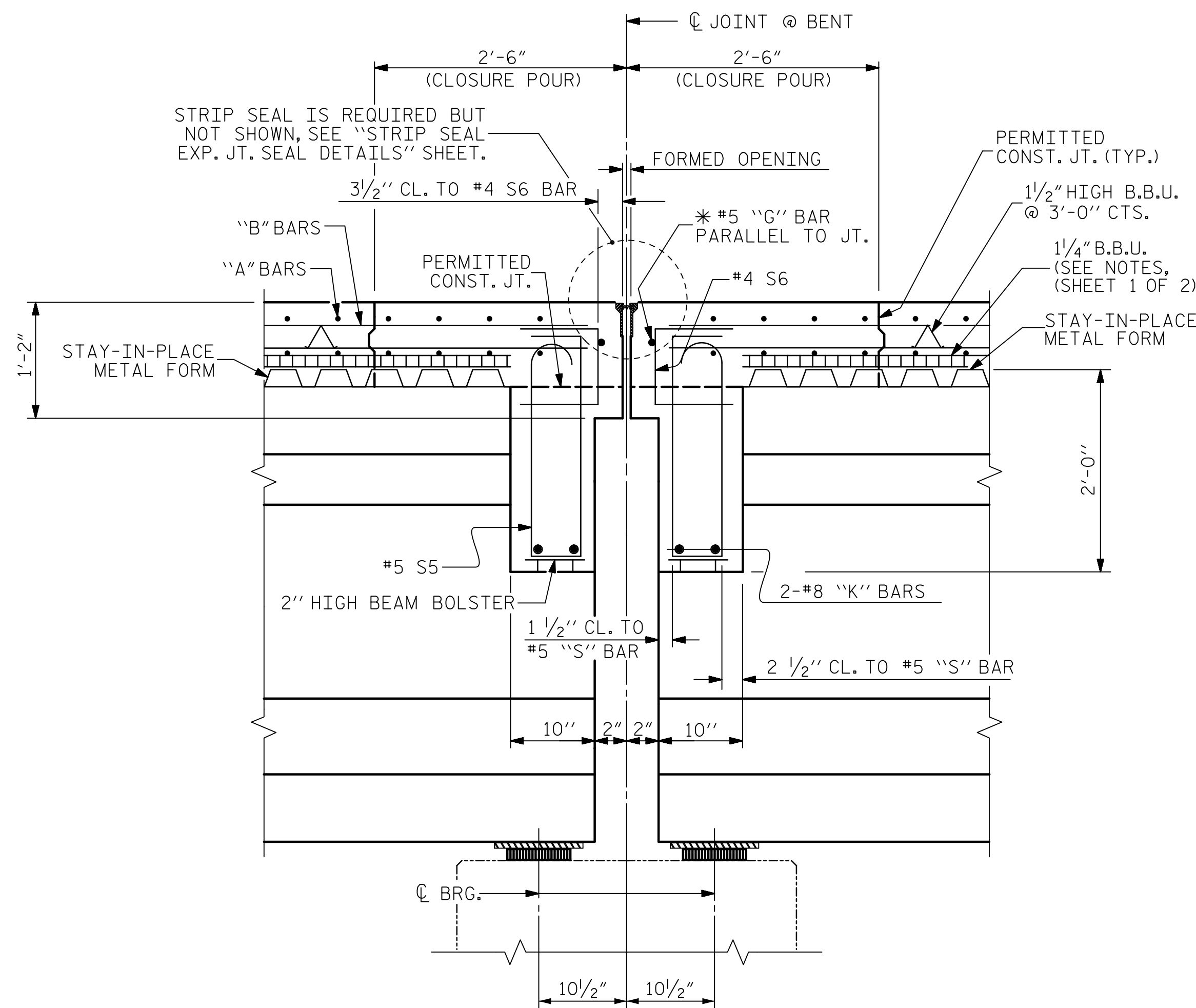
PLAN VIEW



SECTION A-A

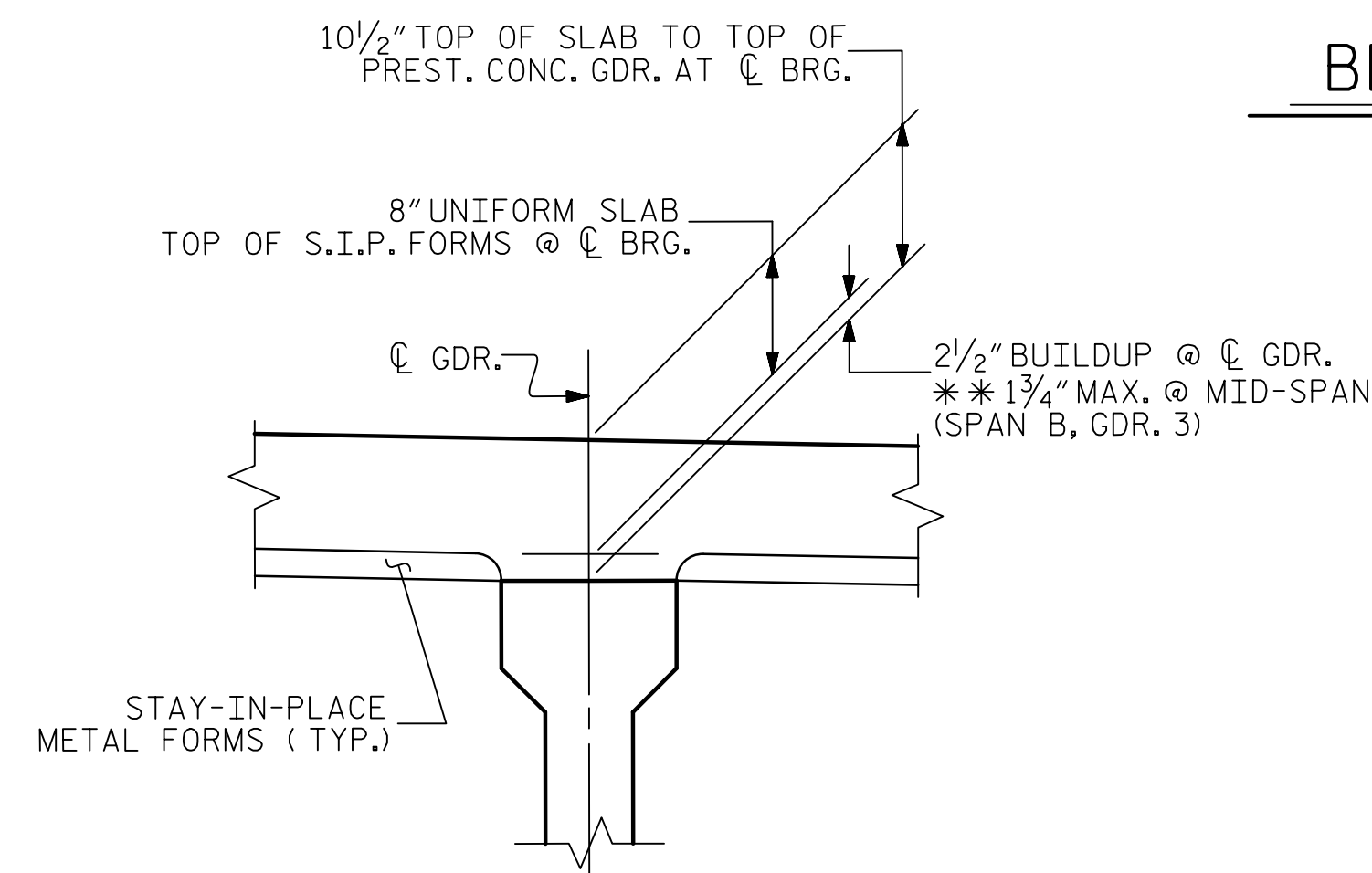
BENT DIAPHRAGM BLOCKOUT DETAIL

(TYP. @ BENTS 2 & 3)



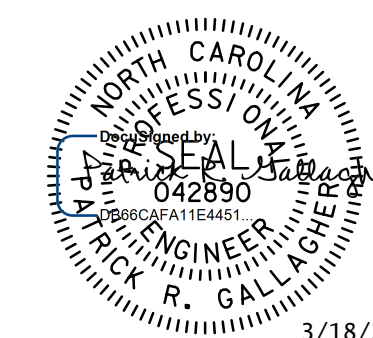
SECTION @ BENTS 1 & 4

* #5G BAR MAY BE SHIFTED SLIGHTLY, AS NECESSARY, TO CLEAR REINFORCING STEEL AND STIRRUPS.



DETAIL "A"

** BASED ON PREDICTED FINAL CAMBER AND THEORETICAL GRADE LINE ELEVATIONS.



3/18/2021

V&M
Vaughn & Melton
Consulting Engineers
Asheville, North Carolina
828-253-2788

Boone, NC 828-355-9933
Tri-Cities, TN 423-467-8401
Knoxville, TN 865-546-5800
Spartanburg, SC 864-574-4775
Charleston, SC 843-974-5650
Middleboro, KY 506-248-6500
Charlottesville, VA 804-357-0488
Atlanta, GA 770-627-3590

Copyright © 2006 Vaughn & Melton, Inc. All Rights Reserved

DOCUMENT NOT CONSIDERED FINAL UNLESS ALL SIGNATURES COMPLETED

DWN. BY: WDC
CHKD. BY: PRG
DES. EGR. OF RECORD: PRG

DATE: 10/2020
DATE: 10/2020
DATE: 10/2020

PROJECT NO. B-4407
ANSON/STANLY COUNTY
STATION: 32+31.61 -L-

SHEET 2 OF 2

STATE OF NORTH CAROLINA
DEPARTMENT OF TRANSPORTATION
RALEIGH

SUPERSTRUCTURE
TYPICAL SECTION
DETAILS

REVISIONS

NO.	BY:	DATE:	NO.	BY:	DATE:
1			3		
2			4		

SHEET NO.
S-8
TOTAL SHEETS
45