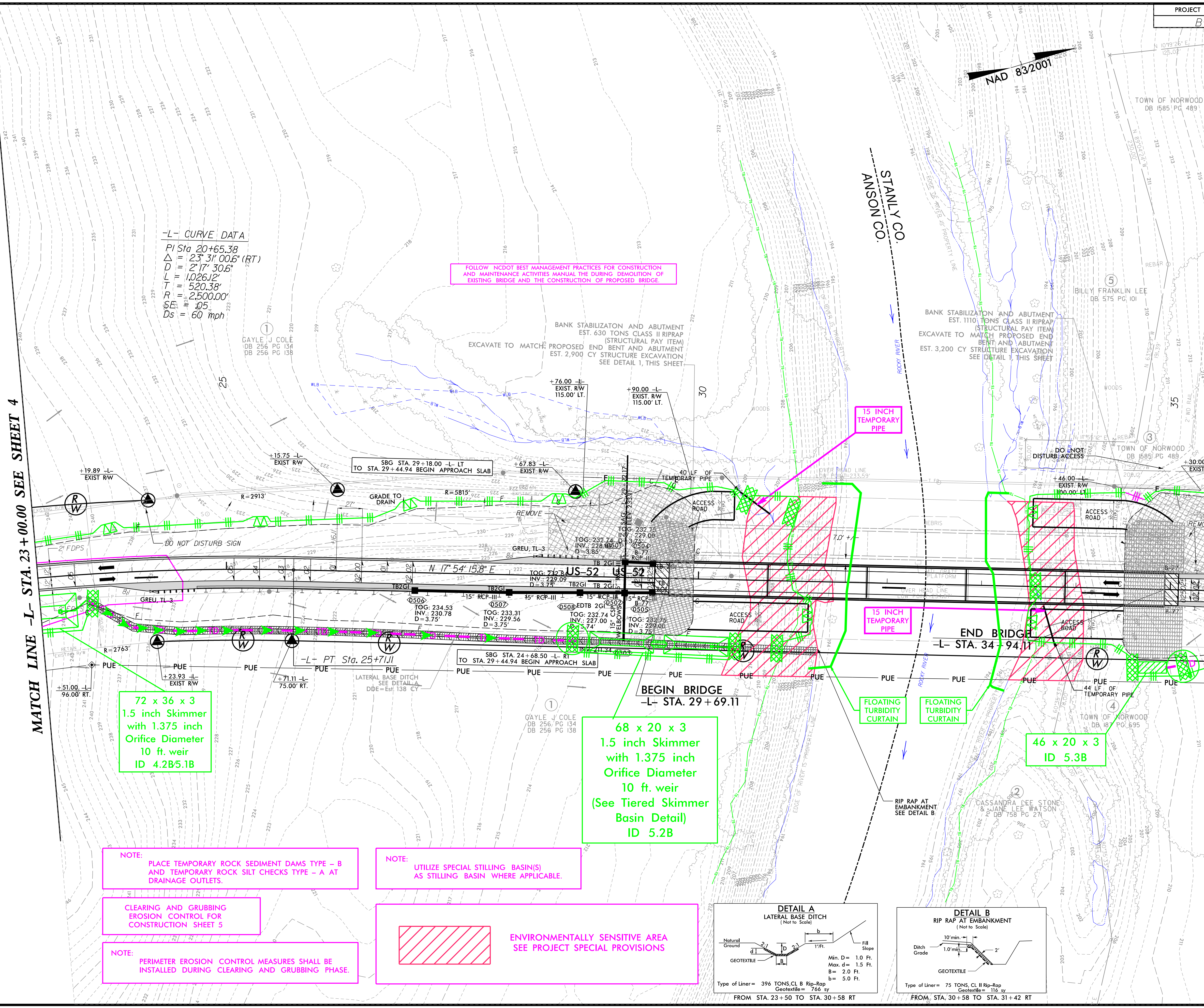


-L- CURVE DATA
 PI Sta 20+65.38
 $\Delta = 23^\circ 31' 00.6"$ (RT)
 $D = 2^\circ 17' 30.6"$
 $L = 1026.12'$
 $R = 520.38'$
 $SE = .05$
 $Ds = 60$ mph

FOLLOW NCDOT BEST MANAGEMENT PRACTICES FOR CONSTRUCTION AND MAINTENANCE ACTIVITIES MANUAL THE DURING DEMOLITION OF EXISTING BRIDGE AND THE CONSTRUCTION OF PROPOSED BRIDGE.

MATCH LINE -L- STA. 23+00.00 SEE SHEET 4

MATCH LINE -L- STA. 35+50.00 SEE SHEET 6



72 x 36 x 3
1.5 inch Skimmer
with 1.375 inch
Orifice Diameter
10 ft. weir
ID 4.2B5.1B

68 x 20 x 3
1.5 inch Skimmer
with 1.375 inch
Orifice Diameter
10 ft. weir
(See Tiered Skimmer
Basin Detail)
ID 5.2B

46 x 20 x 3
ID 5.3B

NOTE: PLACE TEMPORARY ROCK SEDIMENT DAMS TYPE - B AND TEMPORARY ROCK SILT CHECKS TYPE - A AT DRAINAGE OUTLETS.

NOTE: UTILIZE SPECIAL STILLING BASIN(S) AS STILLING BASIN WHERE APPLICABLE.

CLEARING AND GRUBBING EROSION CONTROL FOR CONSTRUCTION SHEET 5

NOTE: PERIMETER EROSION CONTROL MEASURES SHALL BE INSTALLED DURING CLEARING AND GRUBBING PHASE.

ENVIRONMENTALLY SENSITIVE AREA
SEE PROJECT SPECIAL PROVISIONS

