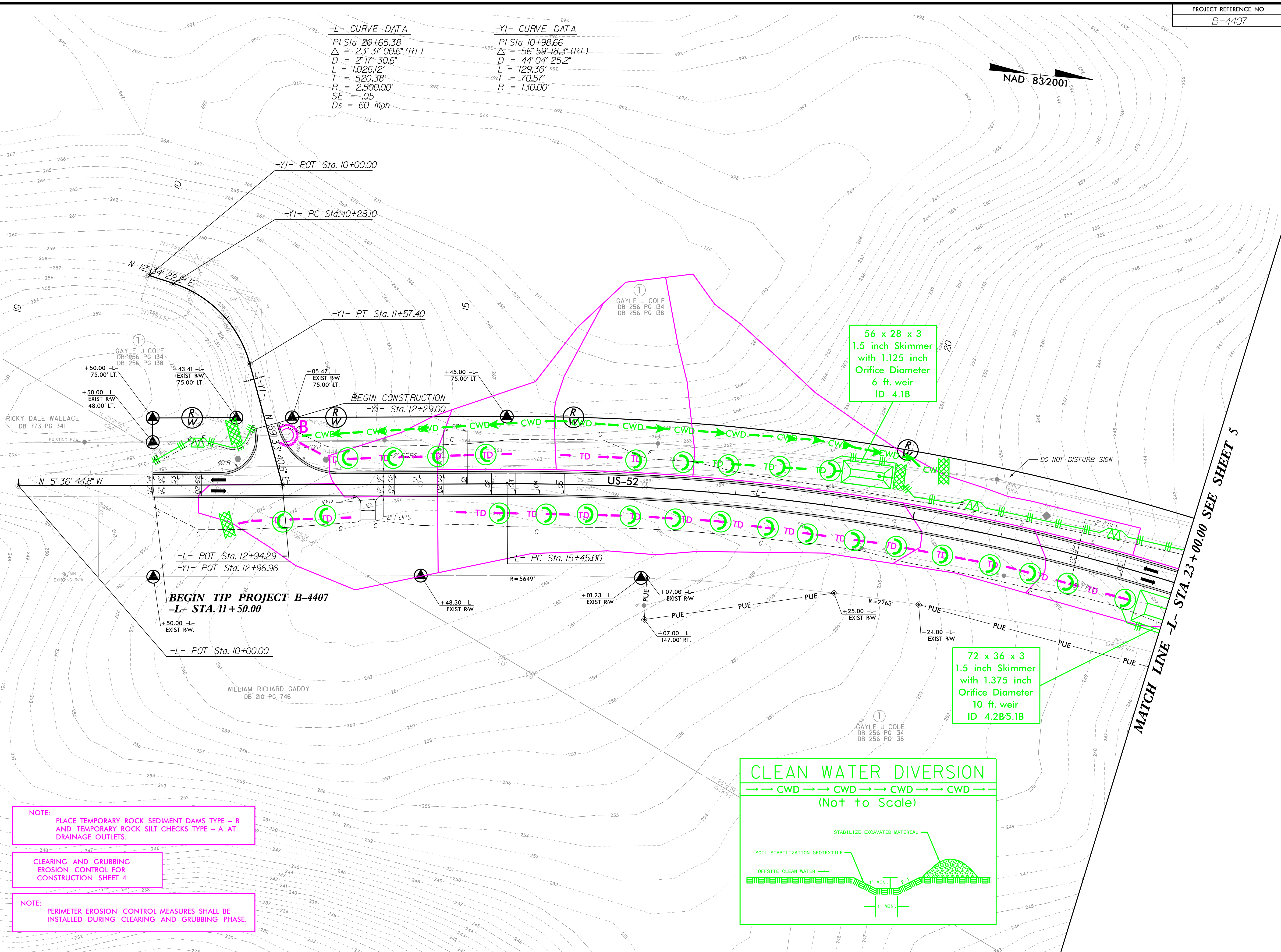
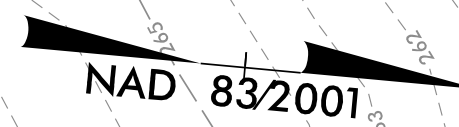


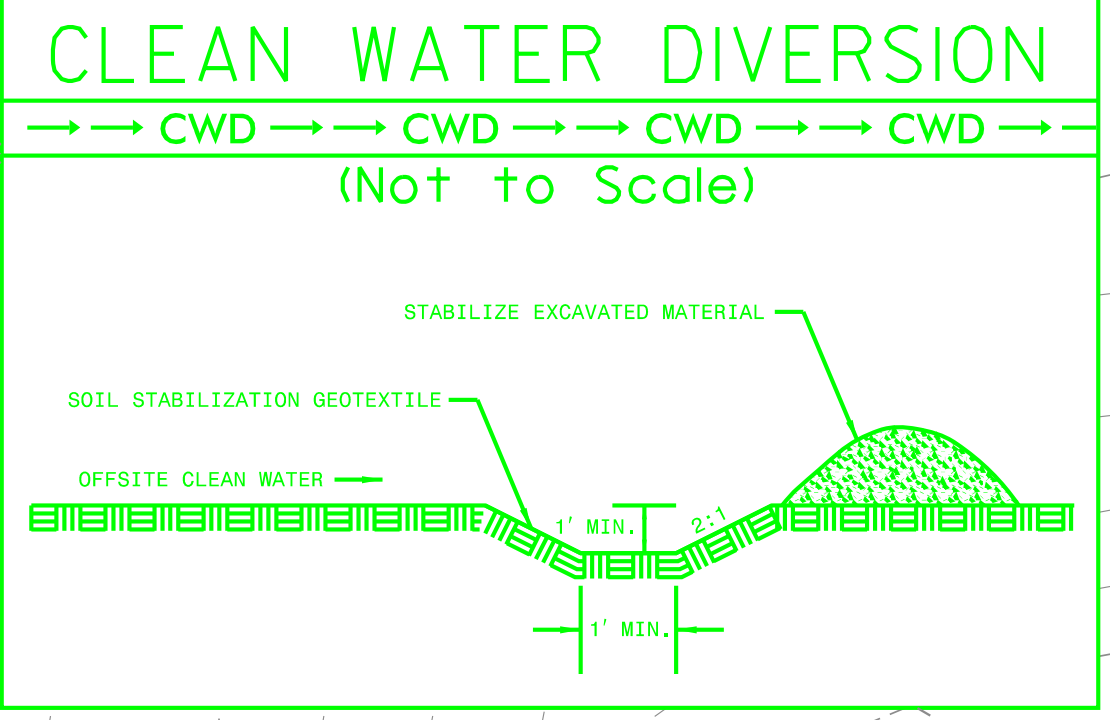
**-L- CURVE DATA**  
 PI Sta 20+65.38  
 $\Delta = 23^{\circ} 31' 00.6''$  (RT)  
 $D = 2' 17.306''$   
 $L = 1,026.12'$   
 $T = 520.38'$   
 $R = 2,500.00'$   
 $SE = .05$   
 $Ds = 60$  mph

**-YI- CURVE DATA**  
 PI Sta 10+98.66  
 $\Delta = 56^{\circ} 59' 18.3''$  (RT)  
 $D = 44' 04.252''$   
 $L = 129.30'$   
 $T = 70.57'$   
 $R = 130.00'$



56 x 28 x 3  
 1.5 inch Skimmer  
 with 1.125 inch  
 Orifice Diameter  
 6 ft. weir  
 ID 4.1B

72 x 36 x 3  
 1.5 inch Skimmer  
 with 1.375 inch  
 Orifice Diameter  
 10 ft. weir  
 ID 4.2B/5.1B



**NOTE:**  
 PLACE TEMPORARY ROCK SEDIMENT DAMS TYPE - B  
 AND TEMPORARY ROCK SILT CHECKS TYPE - A AT  
 DRAINAGE OUTLETS.

CLEARING AND GRUBBING  
 EROSION CONTROL FOR  
 CONSTRUCTION SHEET 4

**NOTE:**  
 PERIMETER EROSION CONTROL MEASURES SHALL BE  
 INSTALLED DURING CLEARING AND GRUBBING PHASE.

**MATCH LINE -L- STA. 23+00.00 SEE SHEET 5**

2/10/2021 3:56:47 AM V:\ashville\Transportation\31730-09 B-4407\Environmental\B4407\_ENV\_EC-4.dgn  
 User:cmr