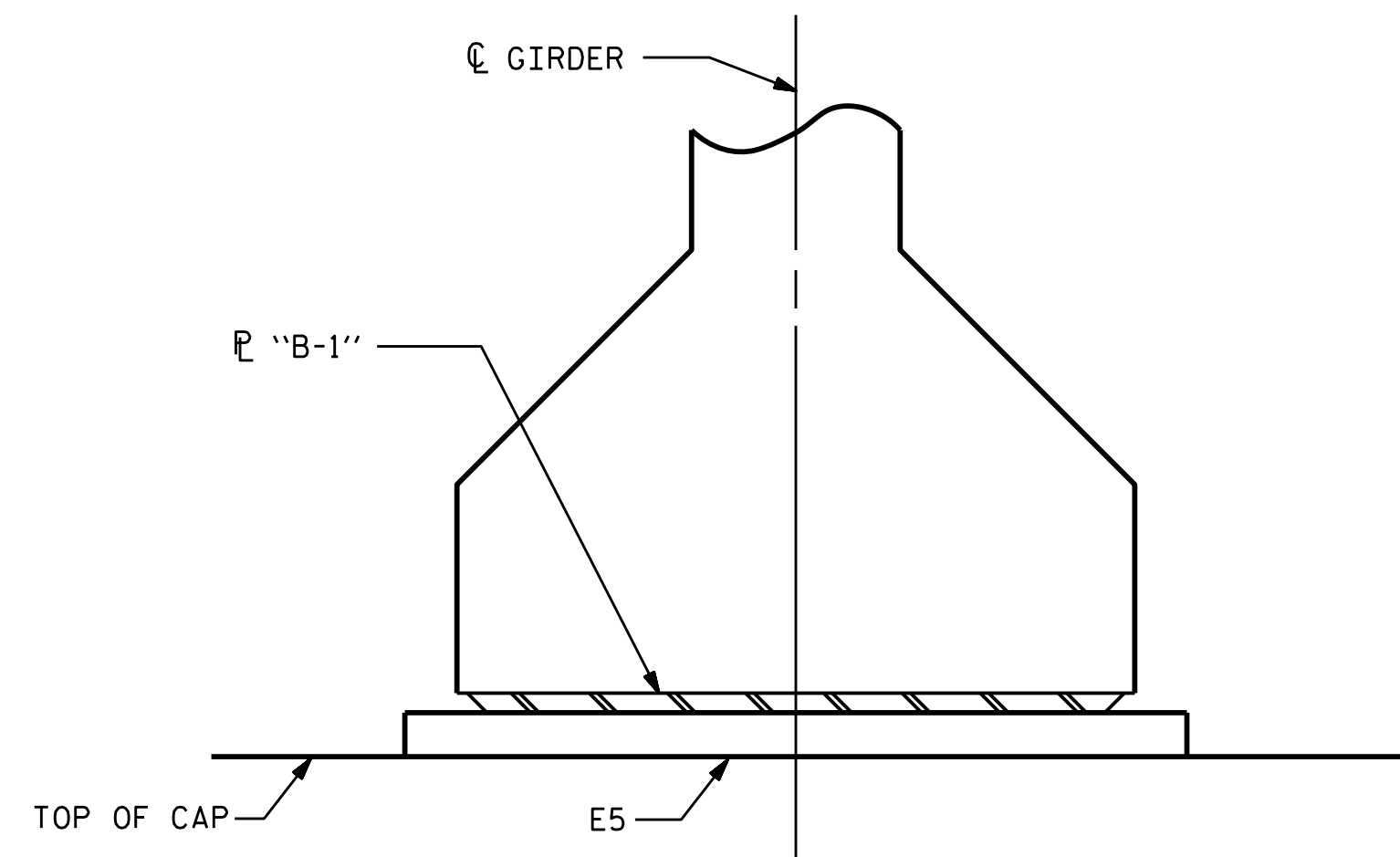


NOTES

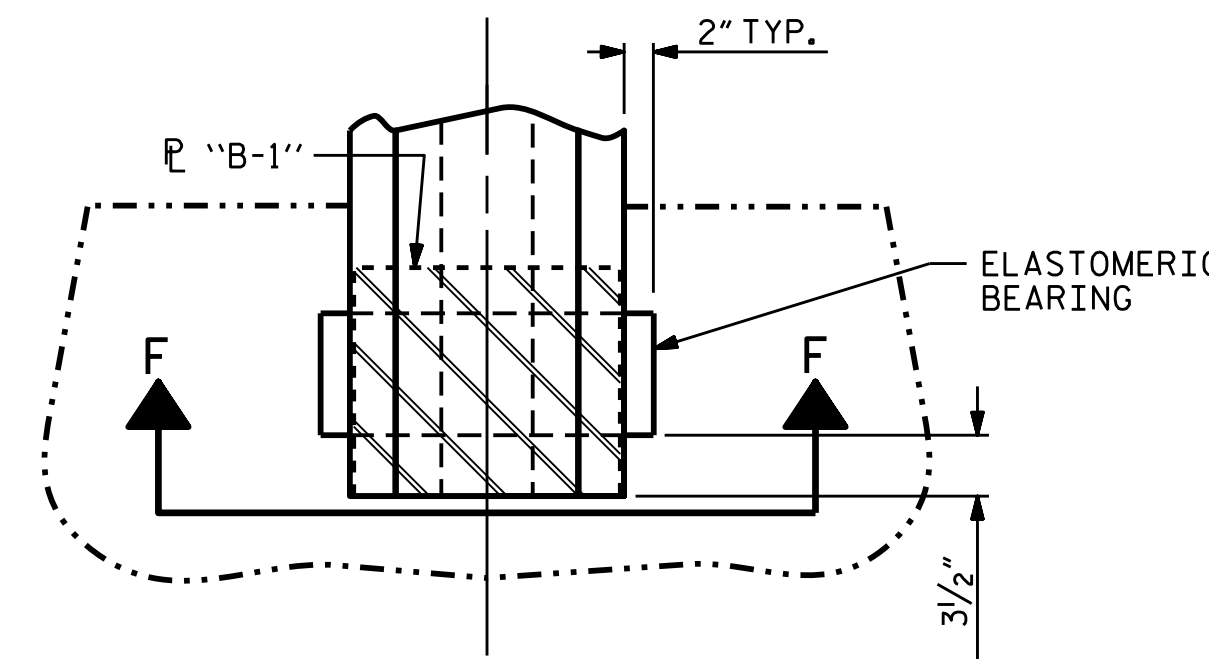
PRIOR TO WELDING, GRIND THE GALVANIZED SURFACE OF THE PORTION OF THE EMBEDDED PLATE AND SOLE PLATE THAT ARE TO BE WELDED. AFTER WELDING, DAMAGED GALVANIZED SURFACES SHALL BE REPAIRED IN ACCORDANCE WITH THE STANDARD SPECIFICATIONS.

THE ELASTOMER IN THE STEEL REINFORCED BEARINGS SHALL HAVE A SHEAR MODULUS OF 0.160 KSI, IN ACCORDANCE WITH AASHTO M251.

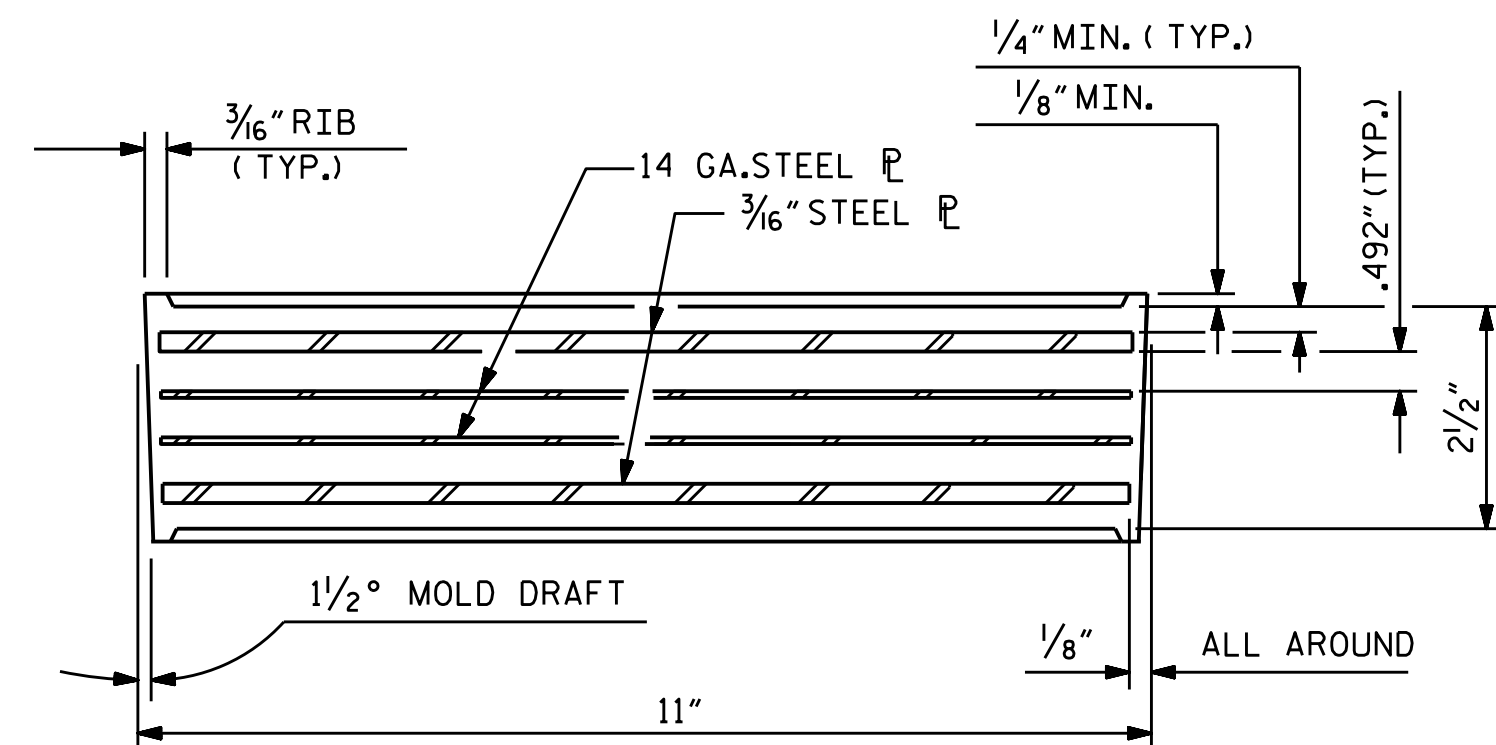
FOR STEEL REINFORCED ELASTOMERIC BEARINGS, SEE SPECIAL PROVISIONS.



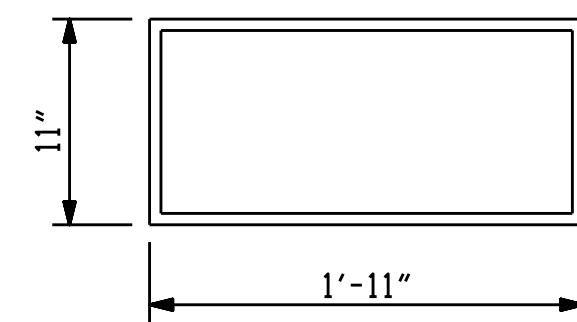
SECTION F-F
SHOWING SECTION AT INTEGRAL END BENT



TYPICAL HALF-PLAN
(SHOWING INTEGRAL END BENT)



TYPICAL SECTION OF ELASTOMERIC BEARINGS

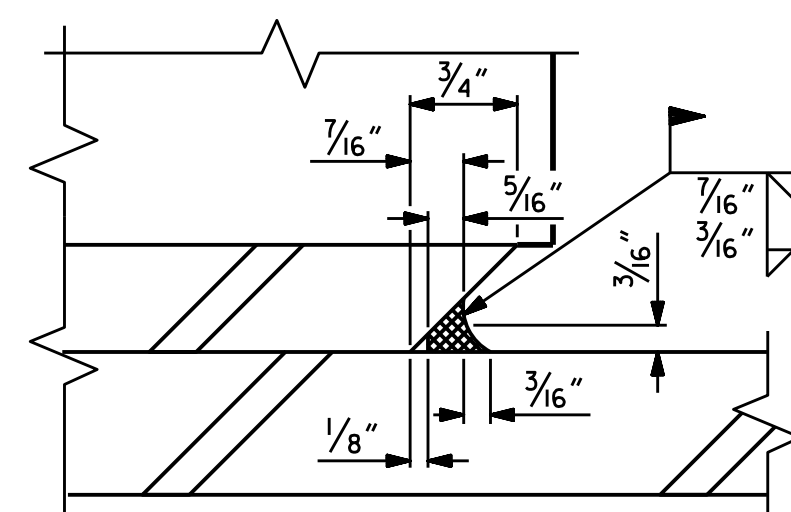


E5 (8 REQ'D)

PLAN VIEW OF ELASTOMERIC BEARING

TYPE VI

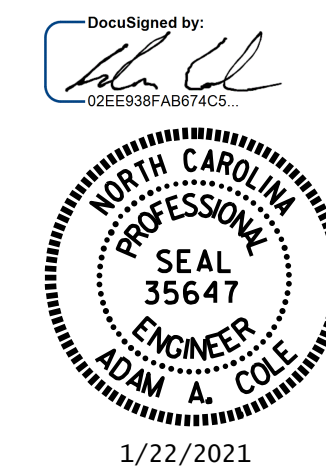
(FOR INTEGRAL END BENTS ONLY)



DETAIL "A"

MAXIMUM ALLOWABLE SERVICE LOADS	
D.L.+L.L. (NO IMPACT)	
TYPE VI	420 k

PROJECT NO. B-5818
ANSON COUNTY
 STATION: 27+79.00 -L-



STATE OF NORTH CAROLINA
 DEPARTMENT OF TRANSPORTATION
 RALEIGH
 STANDARD
ELASTOMERIC BEARING
DETAILS
 PRESTRESSED CONCRETE GIRDER
 SUPERSTRUCTURE

ASSEMBLED BY : M. G. SHAIKH	DATE : 01/2020
CHECKED BY : H. LOCKLEAR	DATE : 02/2020
DRAWN BY : WJH 8/89	REV. 10/1/11 MAA/GM
CHECKED BY : CRK 8/89	REV. 6/13 AAC/MAA
	REV. 1/15 MAA/TMG

DOCUMENT NOT CONSIDERED
 FINAL UNLESS ALL
 SIGNATURES COMPLETED

REVISIONS						SHEET NO.
NO.	BY:	DATE:	NO.	BY:	DATE:	TOTAL SHEETS
1			3			24
2			4			24