

5/14/1999

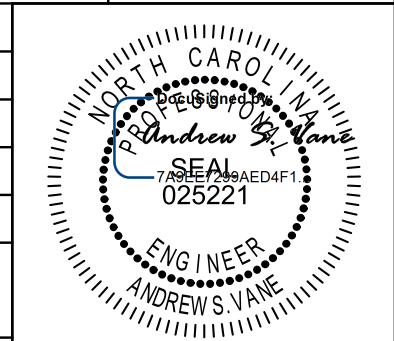
SCALE: 1" = 20' HORIZONTAL  
1" = 4' VERTICAL

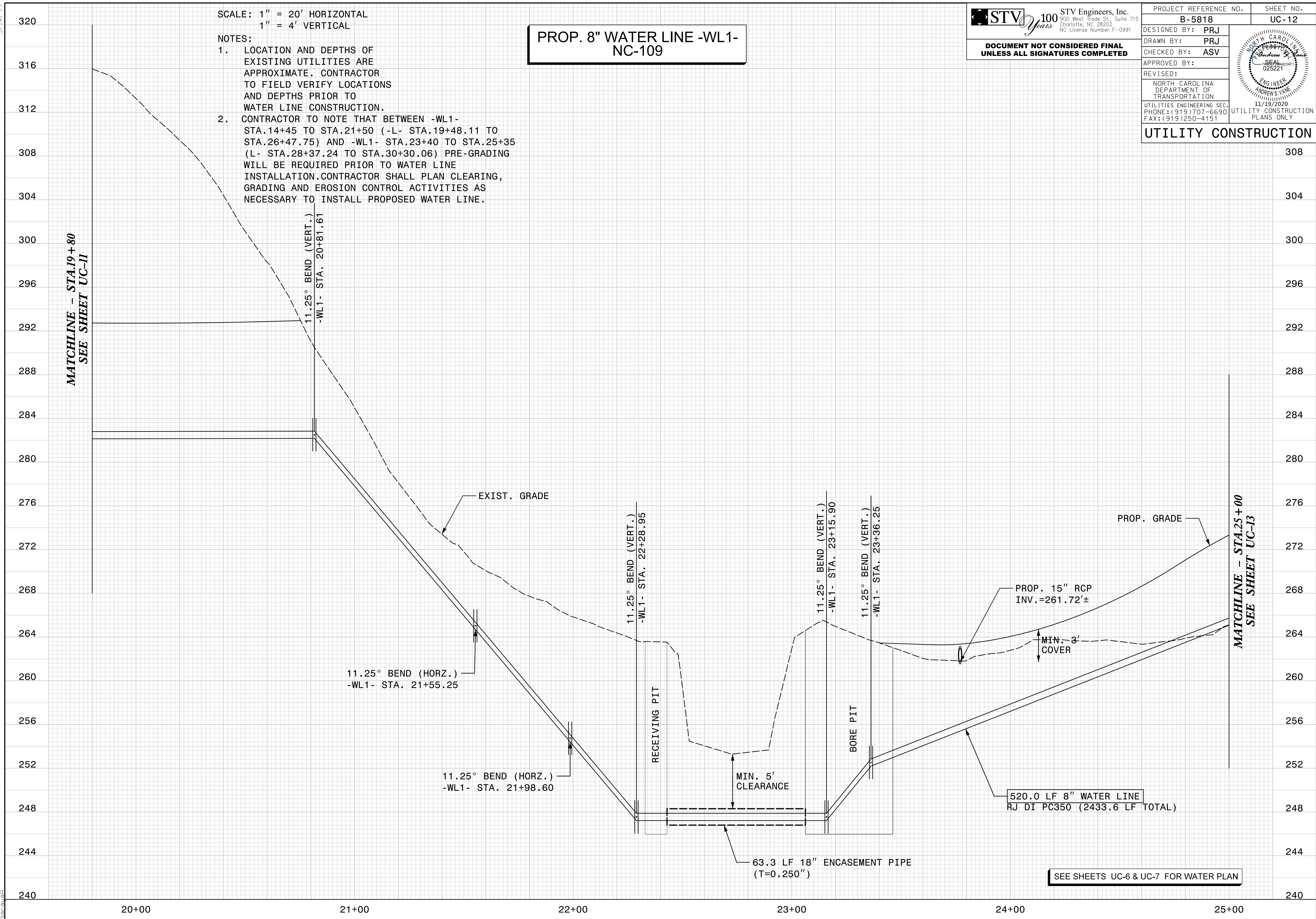
- NOTES:
1. LOCATION AND DEPTHS OF EXISTING UTILITIES ARE APPROXIMATE. CONTRACTOR TO FIELD VERIFY LOCATIONS AND DEPTHS PRIOR TO WATER LINE CONSTRUCTION.
  2. CONTRACTOR TO NOTE THAT BETWEEN -WL1- STA.14+45 TO STA.21+50 (-L- STA.19+48.11 TO STA.26+47.75) AND -WL1- STA.23+40 TO STA.25+35 (L- STA.28+37.24 TO STA.30+30.06) PRE-GRADING WILL BE REQUIRED PRIOR TO WATER LINE INSTALLATION. CONTRACTOR SHALL PLAN CLEARING, GRADING AND EROSION CONTROL ACTIVITIES AS NECESSARY TO INSTALL PROPOSED WATER LINE.

**PROP. 8" WATER LINE -WL1- NC-109**

**STV** 100 Years  
 STV Engineers, Inc.  
 300 West Trade St., Suite 715  
 Charlotte, NC 28202  
 NC License Number F-0991

**DOCUMENT NOT CONSIDERED FINAL UNLESS ALL SIGNATURES COMPLETED**

PROJECT REFERENCE NO. <b>B-5818</b>	SHEET NO. <b>UC-12</b>
DESIGNED BY: <b>PRJ</b>	 NORTH CAROLINA DEPARTMENT OF TRANSPORTATION 11/19/2020 UTILITIES CONSTRUCTION PLANS ONLY
DRAWN BY: <b>PRJ</b>	
CHECKED BY: <b>ASV</b>	
APPROVED BY:	
REVISID:	
NORTH CAROLINA DEPARTMENT OF TRANSPORTATION	
UTILITIES ENGINEERING SEC. PHONE: (919) 707-6690 FAX: (919) 250-4151	
<b>UTILITY CONSTRUCTION</b>	



SEE SHEETS UC-6 & UC-7 FOR WATER PLAN

I:\18\2020\Projects\Utilities\Engineering\UC\Proj\Sheet\B5818.WS\_UC12.dgn