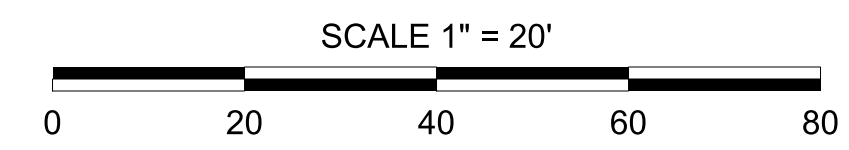


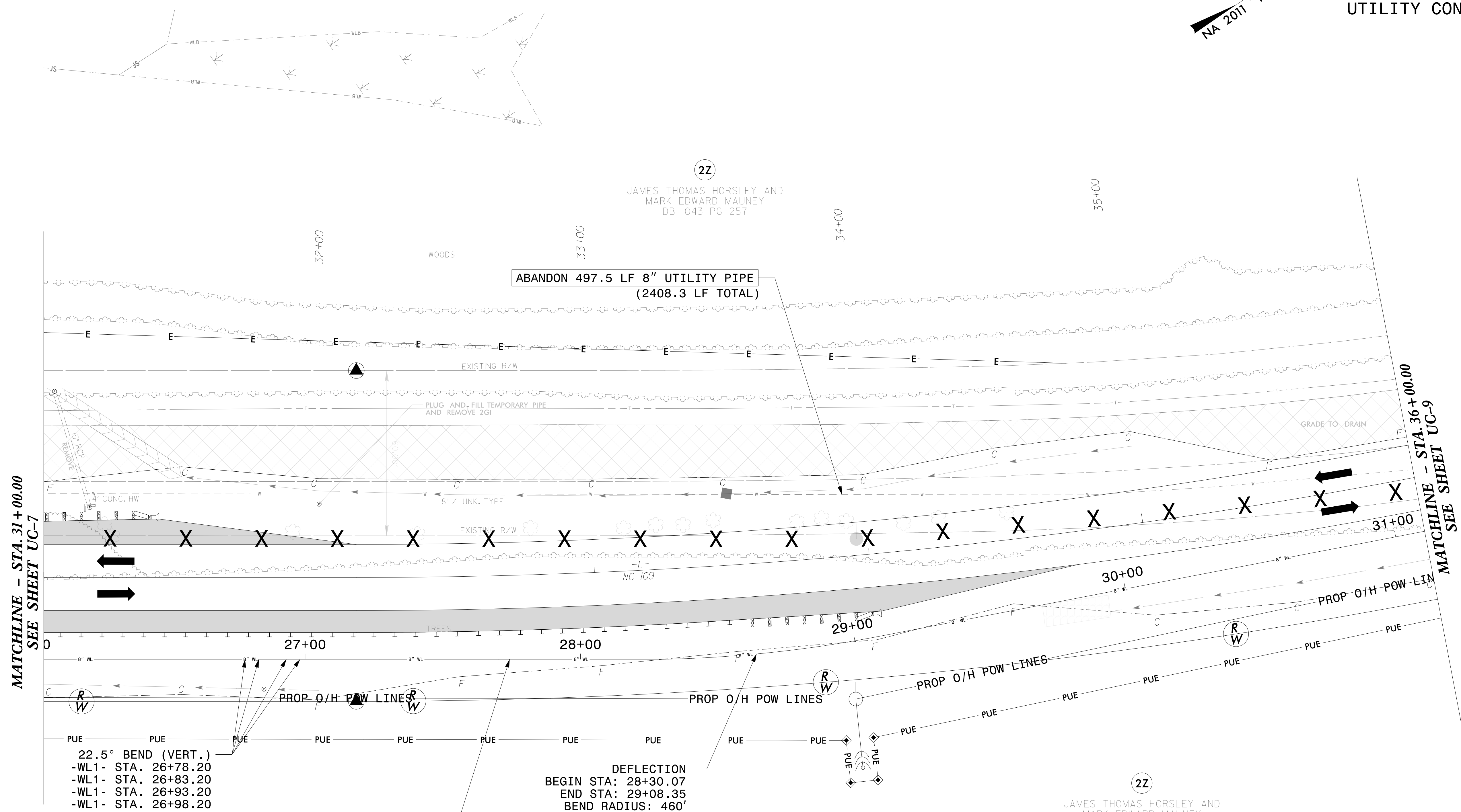
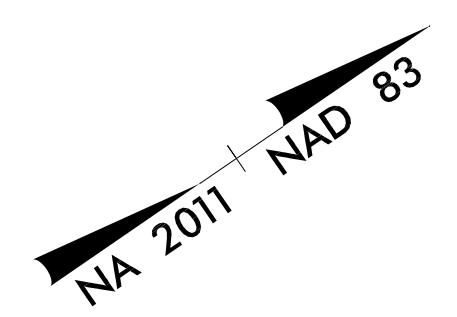
5/14/99



STV 100 Years
 STV Engineers, Inc.
 800 West Trade St., Suite 715
 Charlotte, NC 28202
 NC License Number F-0991

**DOCUMENT NOT CONSIDERED FINAL
UNLESS ALL SIGNATURES COMPLETED**

PROJECT REFERENCE NO.	B-5818	SHEET NO.	UC-8
DESIGNED BY:	PRJ		
DRAWN BY:	PRJ		
CHECKED BY:	ASV		
APPROVED BY:			
REVIS:			
NORTH CAROLINA DEPARTMENT OF TRANSPORTATION		UTILITY CONSTRUCTION PLANS ONLY	
UTILITIES ENGINEERING SEC. PHONE: (919) 707-6690 FAX: (919) 250-4151			

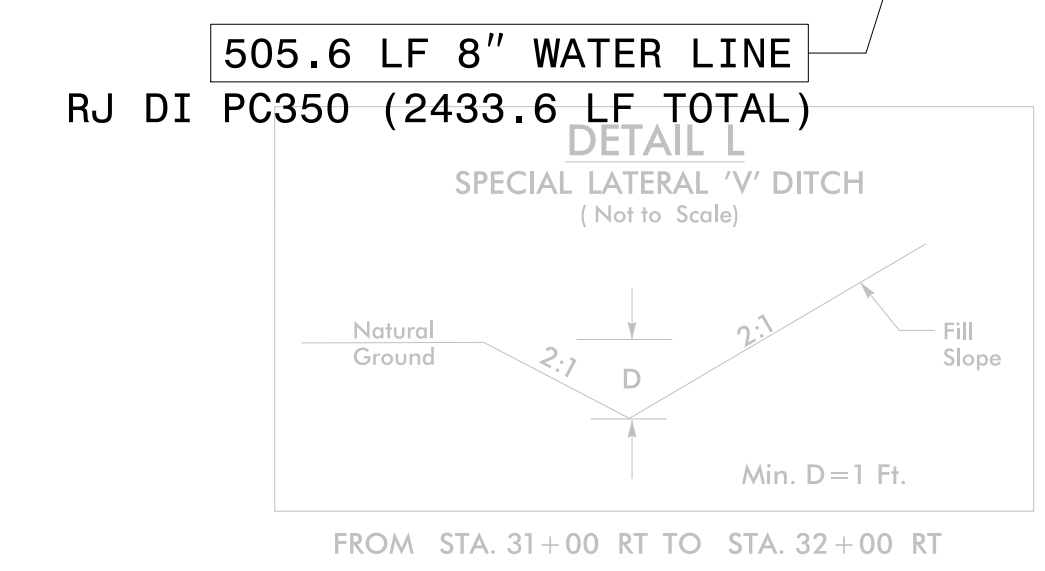


MATCHLINE - STA. 31+00.00
SEE SHEET UC-7

MATCHLINE - STA. 36+00.00
SEE SHEET UC-9

- 22.5° BEND (VERT.)
- WL1- STA. 26+78.20
- WL1- STA. 26+83.20
- WL1- STA. 26+93.20
- WL1- STA. 26+98.20

DEFLECTION
 BEGIN STA: 28+30.07
 END STA: 29+08.35
 BEND RADIUS: 460'



JAMES THOMAS HORSLEY AND
 MARK EDWARD MAUNEY
 DB 1043 PG 257

THE ESTIMATED QUANTITY OF DUCTILE IRON WATER PIPE FITTINGS ON THIS PLAN SHEET IS 440 POUNDS. THE ACTUAL QUANTITY AND TYPE OF FITTINGS WILL VARY BASED ON FIELD CONDITIONS.

SEE SHEETS UC-13 & UC-14 FOR -WL1- PROFILE

I:\5\2021
 R:\Utilities\Engineering\UC\Proj\Sheet\B5818.WS_UC8.dgn
 wallnee