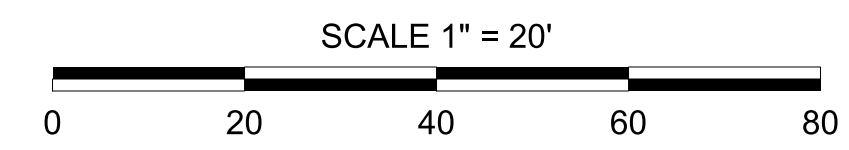


5/14/99

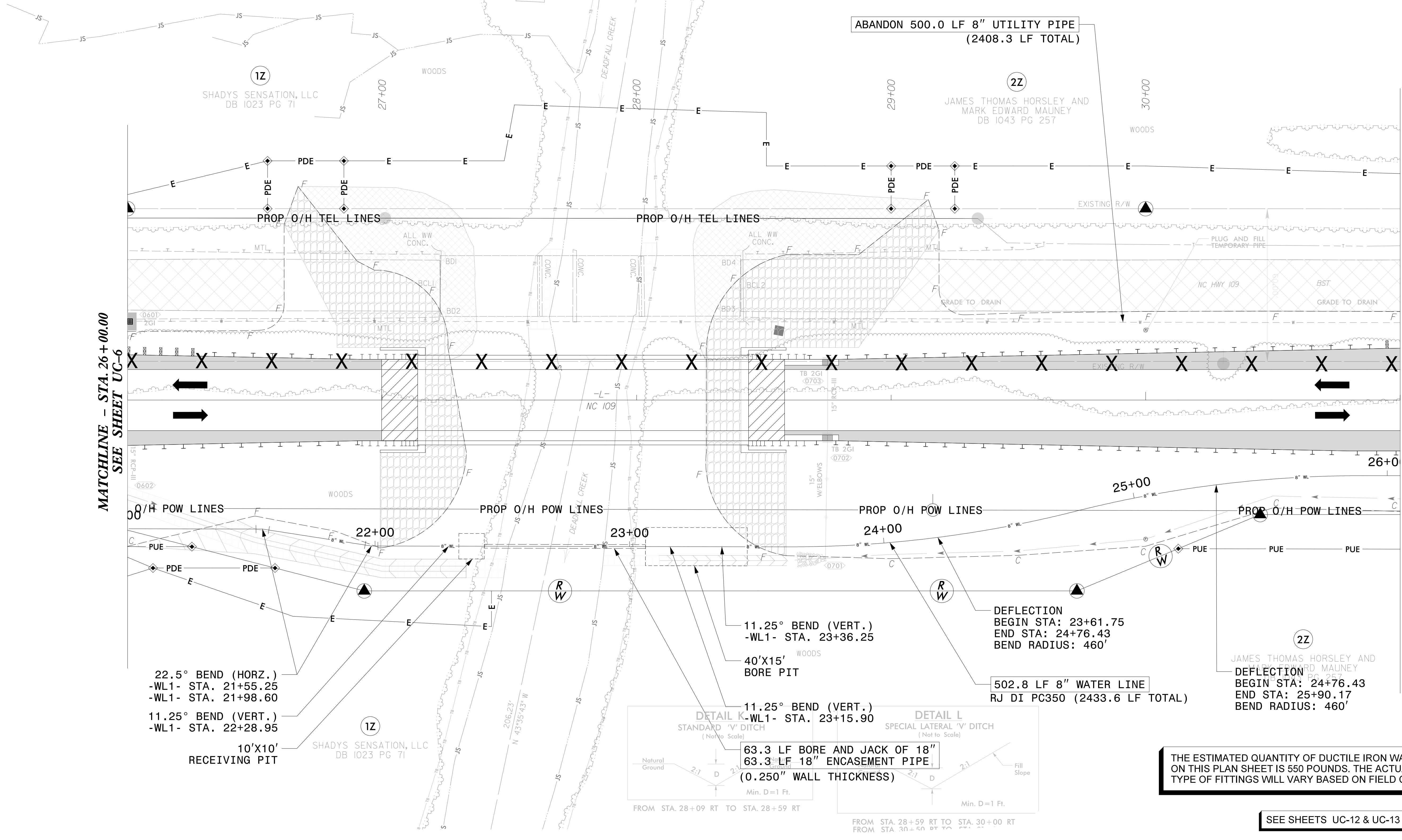
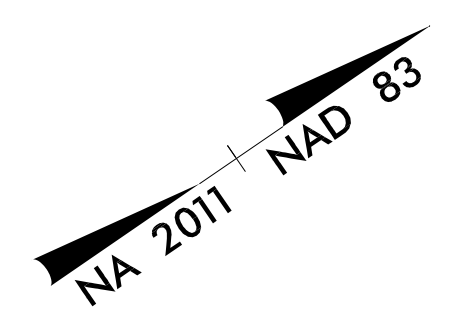
**NOTES:**  
 1. CONTRACTOR TO NOTE THAT BETWEEN -WL1- STA.14+45 TO STA.21+50 (-L- STA.19+48.11 TO STA.26+47.75) AND -WL1- STA.23+40 TO STA.25+35 (L- STA.28+37.24 TO STA.30+30.06) PRE-GRADING WILL BE REQUIRED PRIOR TO WATER LINE INSTALLATION. CONTRACTOR SHALL PLAN CLEARING, GRADING AND EROSION CONTROL ACTIVITIES AS NECESSARY TO INSTALL PROPOSED WATER LINE.



**STV** 100 Years  
 STV Engineers, Inc.  
 800 West Trade St., Suite 715  
 Charlotte, NC 28202  
 NC License Number F-0991

**DOCUMENT NOT CONSIDERED FINAL  
 UNLESS ALL SIGNATURES COMPLETED**

PROJECT REFERENCE NO.	B-5818	SHEET NO.	UC-7
DESIGNED BY:	PRJ		
DRAWN BY:	PRJ		
CHECKED BY:	ASV		
APPROVED BY:			
REVISED:			
NORTH CAROLINA DEPARTMENT OF TRANSPORTATION		UTILITY CONSTRUCTION PLANS ONLY	
UTILITIES ENGINEERING SEC. PHONE: (919) 707-6690 FAX: (919) 250-4151			



MATCHLINE - STA. 26+00.00  
SEE SHEET UC-6

MATCHLINE - STA. 31+00.00  
SEE SHEET UC-8

22.5° BEND (HORZ.)  
 -WL1- STA. 21+55.25  
 -WL1- STA. 21+98.60

11.25° BEND (VERT.)  
 -WL1- STA. 22+28.95

10'X10'  
 RECEIVING PIT

11.25° BEND (VERT.)  
 -WL1- STA. 23+36.25  
 40'X15'  
 BORE PIT

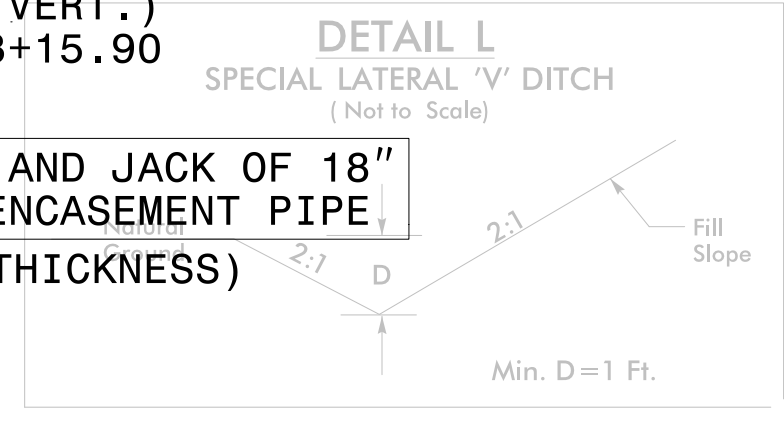
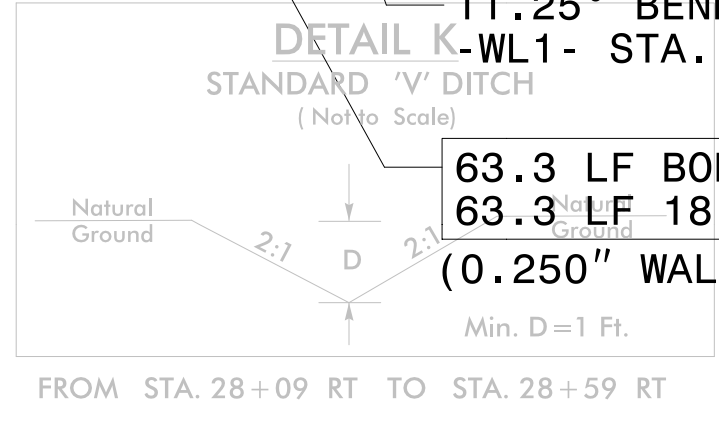
11.25° BEND (VERT.)  
 -WL1- STA. 23+15.90

63.3 LF BORE AND JACK OF 18"  
 63.3 LF 18" ENCASEMENT PIPE  
 (0.250" WALL THICKNESS)

DEFLECTION  
 BEGIN STA: 23+61.75  
 END STA: 24+76.43  
 BEND RADIUS: 460'

502.8 LF 8" WATER LINE  
 RJ DI PC350 (2433.6 LF TOTAL)

DEFLECTION  
 BEGIN STA: 24+76.43  
 END STA: 25+90.17  
 BEND RADIUS: 460'



THE ESTIMATED QUANTITY OF DUCTILE IRON WATER PIPE FITTINGS ON THIS PLAN SHEET IS 550 POUNDS. THE ACTUAL QUANTITY AND TYPE OF FITTINGS WILL VARY BASED ON FIELD CONDITIONS.

SEE SHEETS UC-12 & UC-13 FOR -WL1- PROFILE

I:\5\2021\Utilities\Engineering\UC\Proj\Sheet\B5818.WS\_UC7.dgn  
 walline