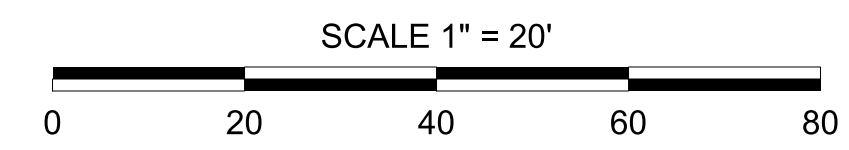


5/14/99

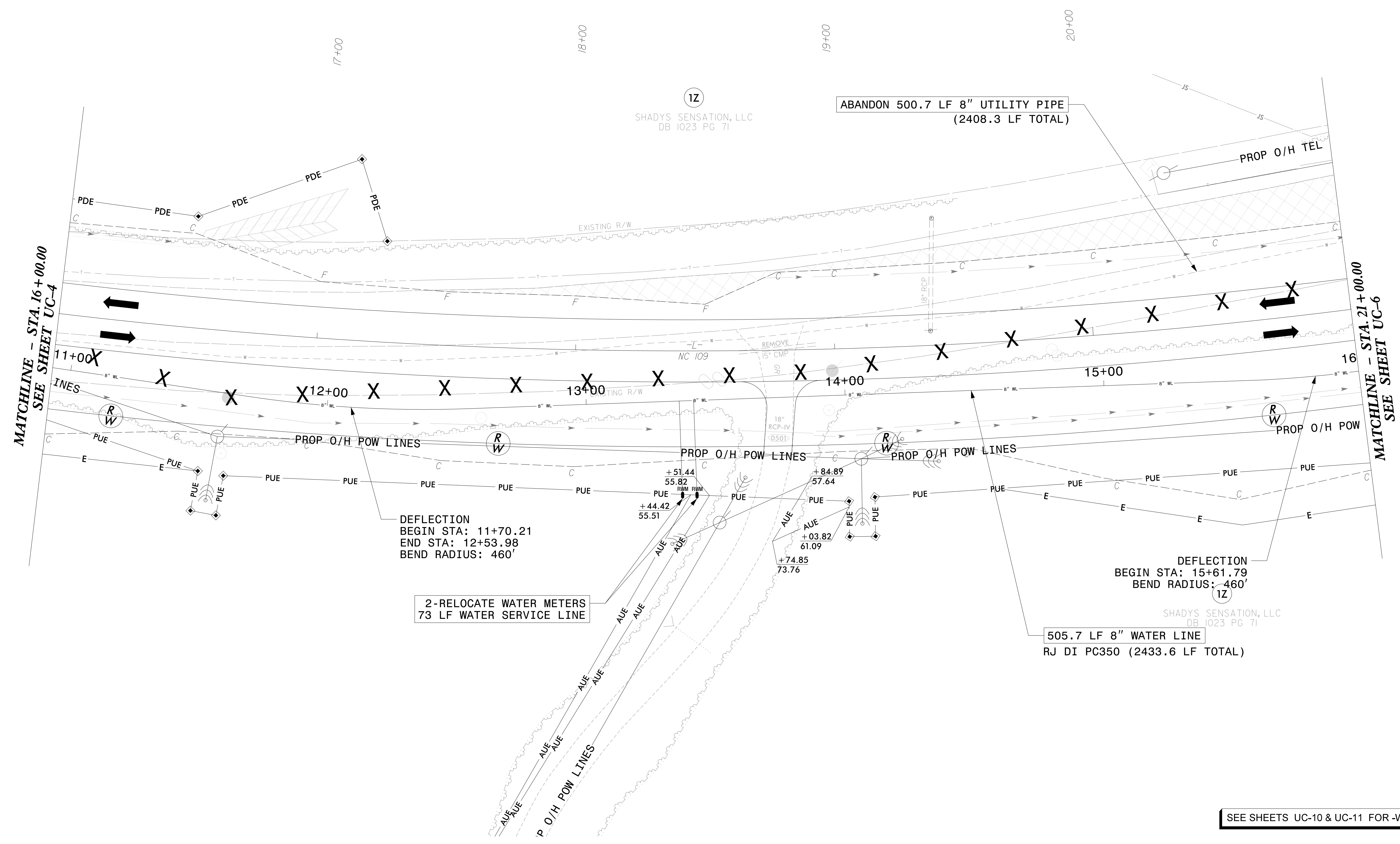
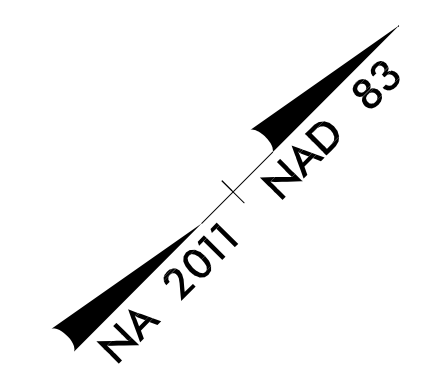
NOTES:
 1. CONTRACTOR TO NOTE THAT BETWEEN -WL1- STA.14+45 TO STA.21+50 (-L- STA.19+48.11 TO STA.26+47.75) AND -WL1- STA.23+40 TO STA.25+35 (L- STA.28+37.24 TO STA.30+30.06) PRE-GRADING WILL BE REQUIRED PRIOR TO WATER LINE INSTALLATION. CONTRACTOR SHALL PLAN CLEARING, GRADING AND EROSION CONTROL ACTIVITIES AS NECESSARY TO INSTALL PROPOSED WATER LINE.



STV 100 Years
 STV Engineers, Inc.
 800 West Trade St., Suite 715
 Charlotte, NC 28202
 NC License Number F-0991

**DOCUMENT NOT CONSIDERED FINAL
 UNLESS ALL SIGNATURES COMPLETED**

PROJECT REFERENCE NO.	B-5818	SHEET NO.	UC-5
DESIGNED BY:	PRJ		
DRAWN BY:	PRJ		
CHECKED BY:	ASV		
APPROVED BY:			
REVISED:			
NORTH CAROLINA DEPARTMENT OF TRANSPORTATION		UTILITY CONSTRUCTION PLANS ONLY	
UTILITIES ENGINEERING SEC. PHONE: (919) 707-6690 FAX: (919) 250-4151			



I:\5\2021
 R:\Utilities\Engineering\UC\Proj\Sheet\B5818.WS_UC5.dgn
 walline