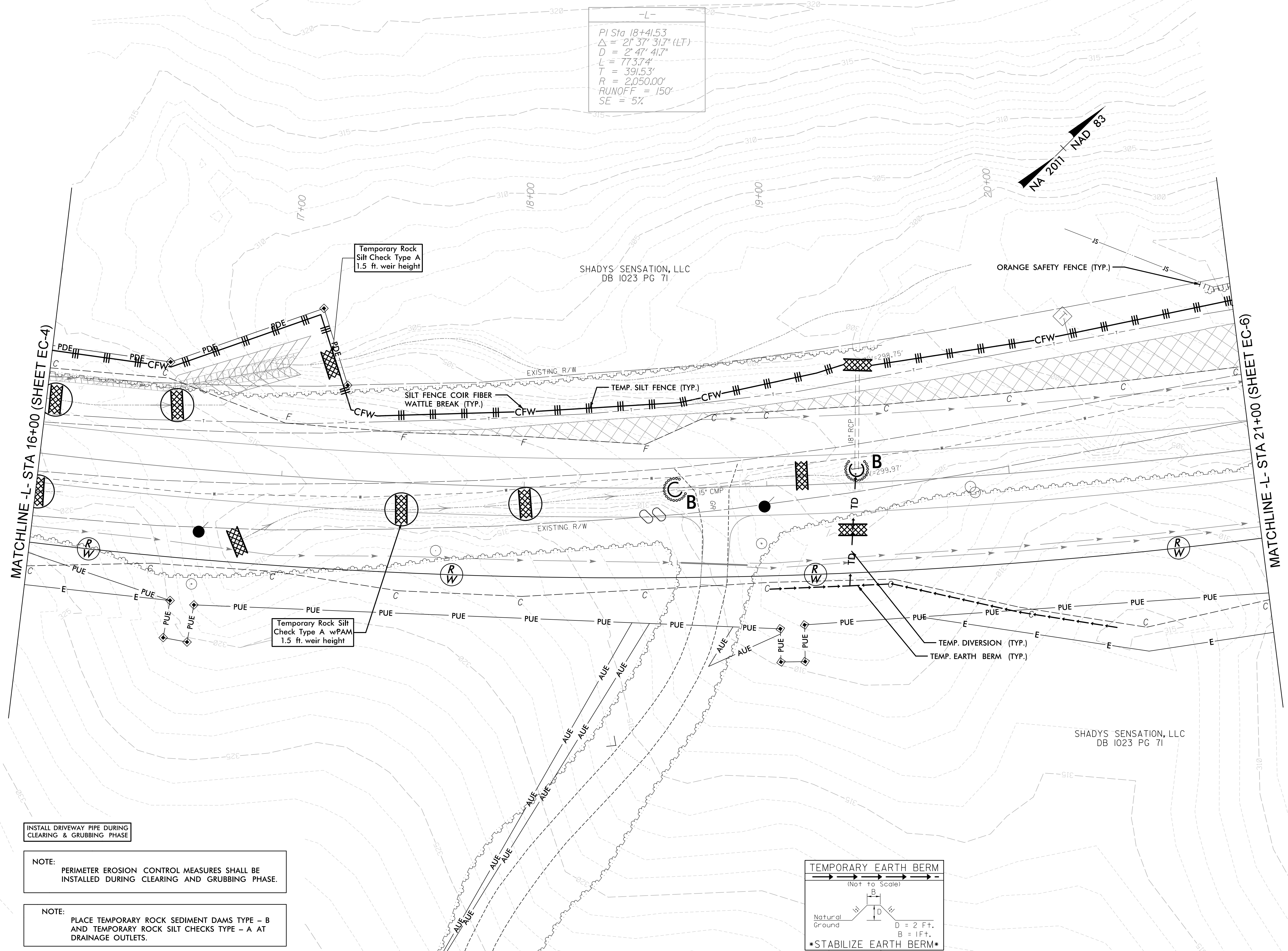


-L-

PI Sta 18+41.53
 $\Delta = 2^\circ 37' 31.7''$ (LT)
 $D = 2^\circ 47' 41.7''$
 $L = 773.74'$
 $T = 391.53'$
 $R = 2,050.00'$
 RUNOFF = 150'
 SE = 5%



INSTALL DRIVEWAY PIPE DURING
CLEARING & GRUBBING PHASE

NOTE:
PERIMETER EROSION CONTROL MEASURES SHALL BE
INSTALLED DURING CLEARING AND GRUBBING PHASE.

NOTE:
PLACE TEMPORARY ROCK SEDIMENT DAMS - B
AND TEMPORARY ROCK SILT CHECKS TYPE - A
AT DRAINAGE OUTLETS.

