

8/17/99

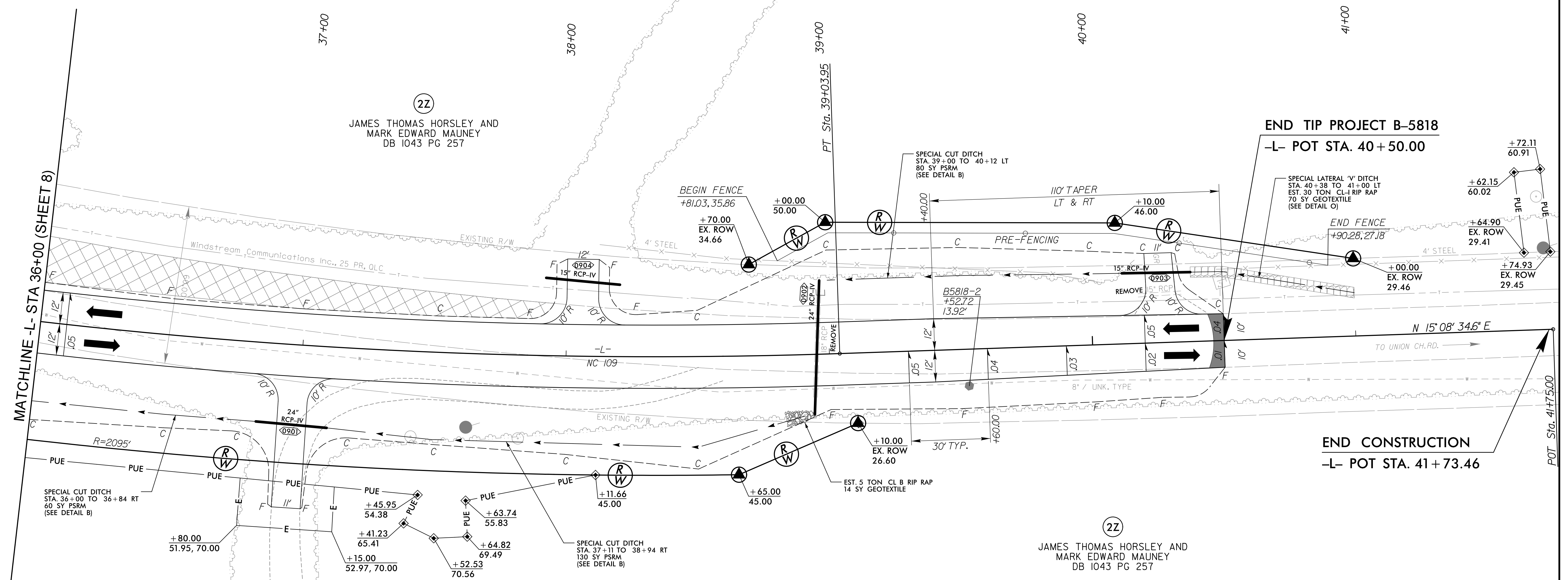
**STV** 100 Years  
 STV Engineers, Inc.  
 300 West Trade St., Suite 715  
 Charlotte, NC 28202  
 NC License Number F-0991

PROJECT REFERENCE NO. <b>B-5818</b>		SHEET NO. <b>9</b>
RW SHEET NO.		HYDRAULICS ENGINEER
ROADWAY DESIGN ENGINEER		
<b>DOCUMENT NOT CONSIDERED FINAL UNLESS ALL SIGNATURES COMPLETED</b>		



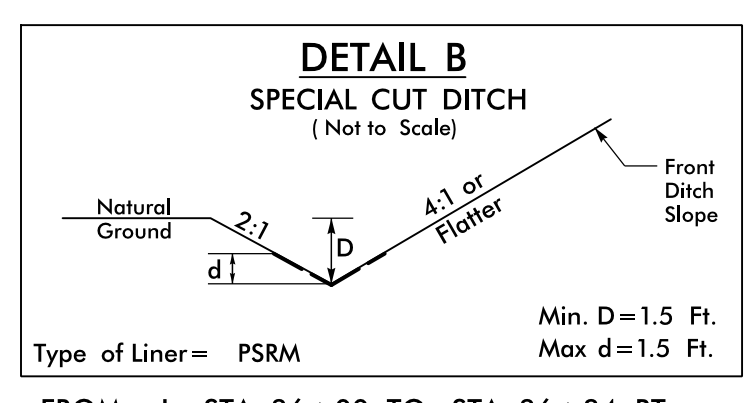
-L-

PI Sta 35+62.03  
 $\Delta = 19' 17" 50.5" (LT)$   
 $D = 2' 47" 41.7"$   
 $L = 690.45'$   
 $T = 348.52'$   
 $R = 2,050.00'$   
 RUNOFF = 150'  
 SE = 5%

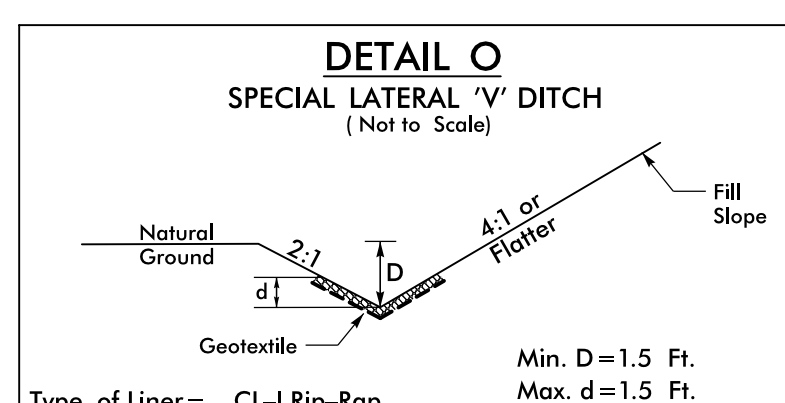


MATCHLINE -L- STA 36+00 (SHEET 8)

POT Sta. 41+75.00



FROM -L- STA. 36+00 TO STA. 36+84 RT  
 FROM -L- STA. 37+11 TO STA. 38+94 RT  
 FROM -L- STA. 39+00 TO STA. 40+12 LT



FROM -L- STA. 40+38 TO STA. 41+00 LT

SEE SHEET 15 FOR -L- PROFILE

4/14/2021 \\proj\proj\stt\B5818\_rdy\_psh09.dgn