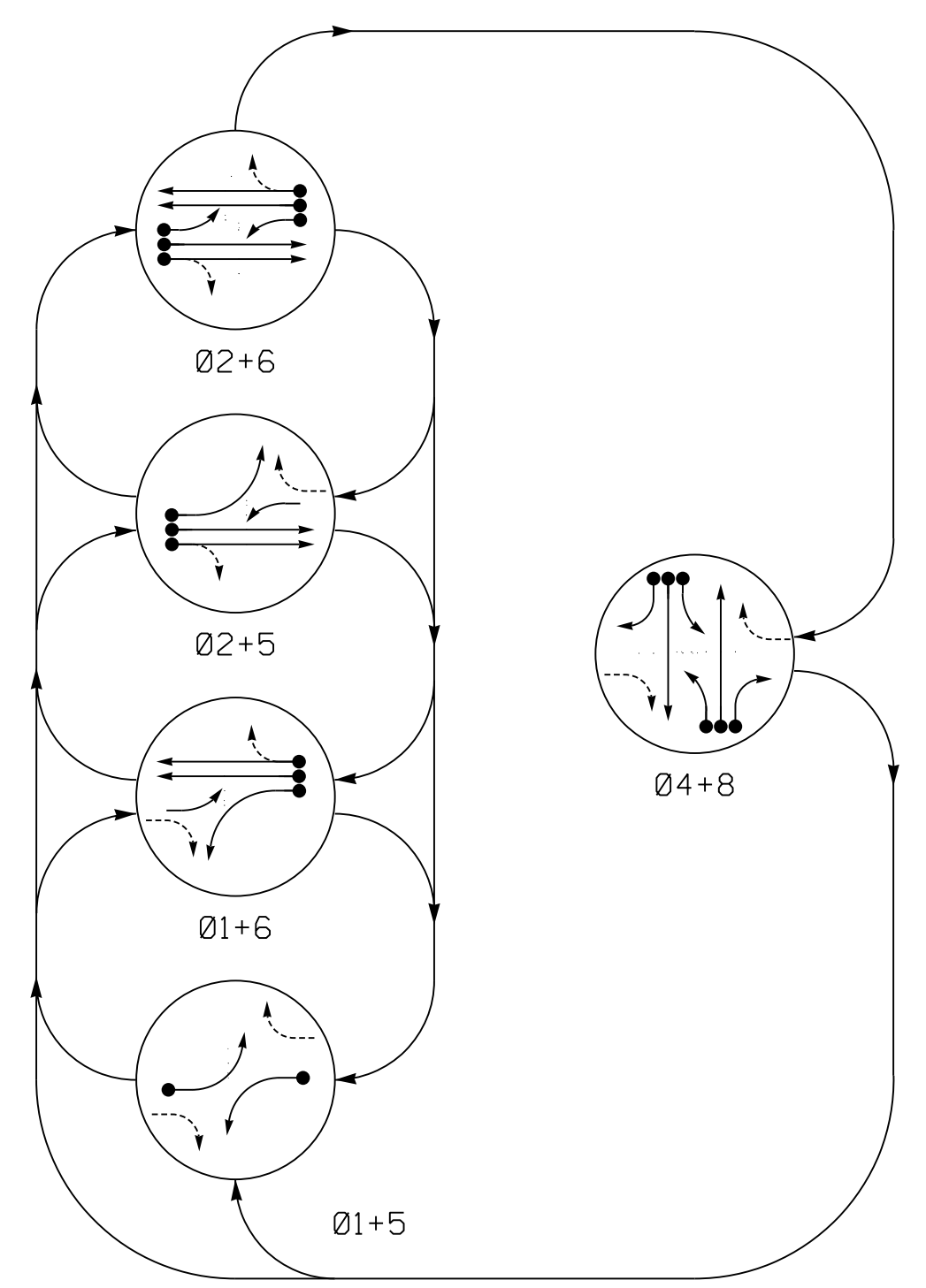


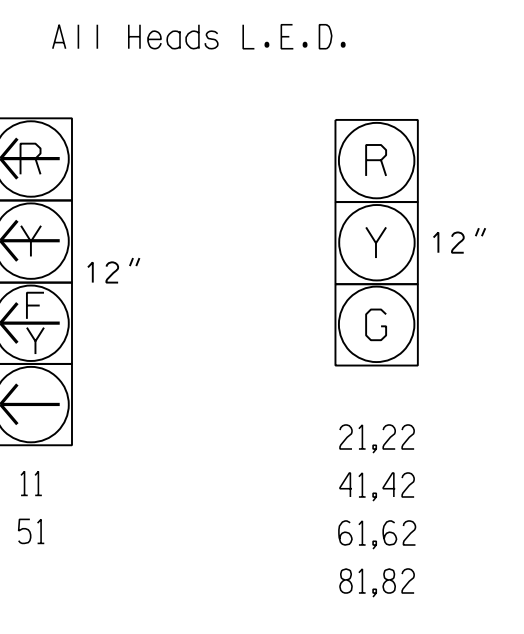
**PHASING DIAGRAM**



**TABLE OF OPERATION**

SIGNAL FACE	PHASE				FLASH
	Ø 1+5	Ø 1+6	Ø 2+5	Ø 2+6	
11	←	←	←	←	Y
21,22	R	R	G	G	Y
41,42	R	R	R	R	G
51	←	←	←	←	Y
61,62	R	G	R	G	Y
81,82	R	R	R	R	G

**SIGNAL FACE I.D.**



**ASC/3 DETECTOR INSTALLATION CHART**

LOOP	SIZE (FT)	DISTANCE FROM STOPBAR (FT)	TURNS	NEW LOOP	PROGRAMMING							
					PHASE	CALLING	EXTEND TIME	DELAY TIME	USE ADDED INITIAL	TYPE	SYSTEM LOOP	NEW CARD
1A	6X40	0	2-4-2	-	1	Yes	-	15	-	S	-	X
2A	6X6	355	EXIST	-	6	Yes	-	3	-	G	-	X
2B	6X6	355	EXIST	-	2	Yes	-	-	X	N	-	X
4A	6X40	0	2-4-2	-	4	Yes	-	3	-	S	-	X
4B	6X40	0	2-4-2	-	4	Yes	-	-	-	S	-	X
4C	6X40	0	2-4-2	-	4	Yes	-	15	-	S	-	X
5A	6X40	0	2-4-2	-	5	Yes	-	15	-	S	-	X
6A	6X6	355	EXIST	-	6	Yes	-	-	X	N	-	X
6B	6X6	355	EXIST	-	6	Yes	-	-	X	N	-	X
8A	6X40	0	2-4-2	-	8	Yes	-	3	-	S	-	X
8B	6X40	0	2-4-2	-	8	Yes	-	-	-	S	-	X
8C	6X40	0	2-4-2	-	8	Yes	-	15	-	S	-	X

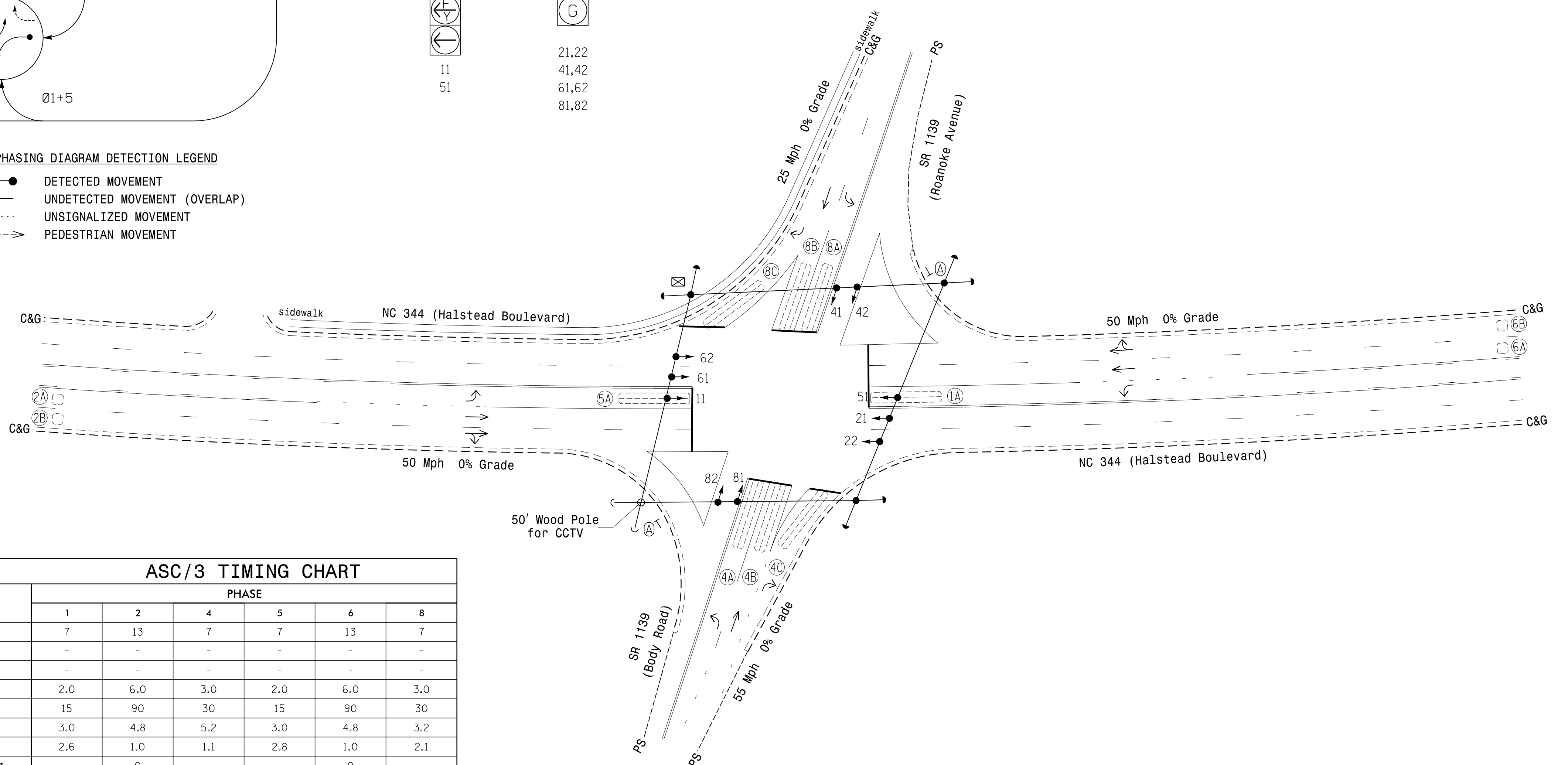
**5 Phase Fully Actuated (Elizabeth City Signal System)**

**NOTES**

1. Refer to "Roadway Standard Drawings NCDOT" dated January 2018 and "Standard Specifications for Roads and Structures" dated January 2018.
2. Do not program signal for late night flashing operation unless otherwise directed by the Engineer.
3. Phase 1 and/or phase 5 may be lagged.
4. Set all detector units to presence mode.
5. Locate new cabinet so as not to obstruct sight distance of vehicles turning right on red.
6. Pavement markings are existing.
7. Maximum times shown in timing chart are for free-run operation only. Coordinated signal system timing values supersede these values.

**PHASING DIAGRAM DETECTION LEGEND**

- ←●→ DETECTED MOVEMENT
- ←→ UNDETECTED MOVEMENT (OVERLAP)
- ←...→ UNSIGNALIZED MOVEMENT
- ←- - -→ PEDESTRIAN MOVEMENT



**ASC/3 TIMING CHART**

FEATURE	PHASE					
	1	2	4	5	6	8
Min Green *	7	13	7	7	13	7
Walk *	-	-	-	-	-	-
Ped Clear	-	-	-	-	-	-
Veh. Extension *	2.0	6.0	3.0	2.0	6.0	3.0
Max 1 *	15	90	30	15	90	30
Yellow	3.0	4.8	5.2	3.0	4.8	3.2
Red Clear	2.6	1.0	1.1	2.8	1.0	2.1
Actuations B4 Add *	-	0	-	-	0	-
Seconds / Actuation *	-	1.5	-	-	1.5	-
Max Initial *	-	40	-	-	40	-
Time Before Reduction *	-	20	-	-	20	-
Time To Reduce *	-	50	-	-	50	-
Minimum Gap	-	3.5	-	-	3.5	-
Locking Detector	-	X	-	-	X	-
Recall Position	-	VEH. RECALL	-	-	VEH. RECALL	-
Dual Entry	-	-	X	-	-	X
Simultaneous Gap	X	X	X	X	X	X

\* These values may be field adjusted. Do not adjust Min Green and Extension times for phases 2 and 6 lower than what is shown. Min Green for all other phases should not be lower than 4 seconds.

**LEGEND**

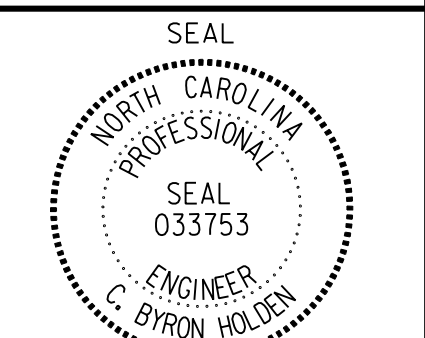
- |  |  |  |  |
|--|--|--|--|
|  | PROPOSED Traffic Signal Head           |  | EXISTING Traffic Signal Head           |
|  | PROPOSED Modified Signal Head          |  | EXISTING Modified Signal Head          |
|  | PROPOSED Pedestrian Signal Head        |  | EXISTING Pedestrian Signal Head        |
|  | PROPOSED Signal Pole with Guy          |  | EXISTING Signal Pole with Guy          |
|  | PROPOSED Signal Pole with Sidewalk Guy |  | EXISTING Signal Pole with Sidewalk Guy |
|  | PROPOSED Inductive Loop Detector       |  | EXISTING Inductive Loop Detector       |
|  | PROPOSED Controller & Cabinet          |  | EXISTING Controller & Cabinet          |
|  | PROPOSED Junction Box                  |  | EXISTING Junction Box                  |
|  | PROPOSED 2-in Underground Conduit      |  | EXISTING 2-in Underground Conduit      |
|  | PROPOSED Right of Way                  |  | EXISTING Right of Way                  |
|  | PROPOSED Directional Arrow             |  | EXISTING Directional Arrow             |
|  | PROPOSED "YIELD" Sign (R1-2)           |  | EXISTING "YIELD" Sign (R1-2)           |

**Signal Upgrade**

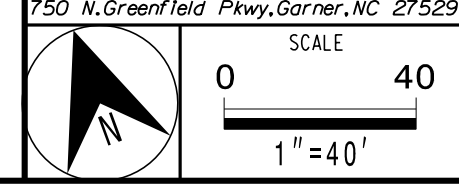


NC 344 (Halstead Boulevard)  
 At  
 SR 1139  
 (Roanoke Avenue/Body Road)  
 Division 1 Pasquotank County Elizabeth City  
 PLAN DATE: September 2018 REVIEWED BY: DTsears  
 PREPARED BY: CBHolden REVIEWED BY:

DOCUMENT NOT CONSIDERED FINAL UNLESS ALL SIGNATURES COMPLETED



PLANS PREPARED BY:  
**RK&K**  
 RUMMEL, KLEPPER & KAHL, LLP  
 900 RIDGEFIELD DRIVE SUITE 350  
 RALEIGH, NORTH CAROLINA 27609-3960  
 NC LICENSE NO. F-0112 • (919) 878-9560



REVISIONS	INIT.	DATE

DocuSigned by:  
 C. Byron Holden  
 9/21/2018  
 DATE  
 SIG. INVENTORY NO. 01-0336