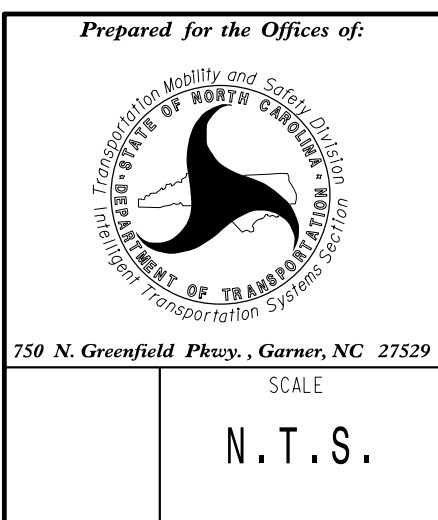


**DOCUMENT NOT CONSIDERED FINAL
UNLESS ALL SIGNATURES COMPLETED**

Color Code		LEGEND	
TIA/EIA	598-B		
BL (1) Blue	RD (7) Red	X	= Fusion Splice Individual Fiber
OR (2) Orange	BK (8) Black	C	= Cap and Seal
GR (3) Green	YL (9) Yellow	EXPRESS	= Express entire buffer tube/fibers through without cutting
BR (4) Brown	VI (10) Violet	BUFFER SPLICE	= Splice all fibers in buffer tube color to color
SL (5) Slate	RS (11) Rose		
WH (6) White	AQ (12) Aqua		

- NOTES**
- Unused fibers left coiled and stored in splice tray.
 - Unused buffer tubes left coiled and stored in splice enclosure.
 - Edge switch configurations are generic. Contractor is responsible for determining/ensuring the proper terminations.



Elizabeth City Signal System Fiber-Optic Splicing Details	
Division 1	Pasquotank County Elizabeth City
PLAN DATE: April 2018	REVIEWED BY: JE Beck
PREPARED BY: AJ Davis	REVIEWED BY: LM Moon
REVISIONS	INIT. DATE

