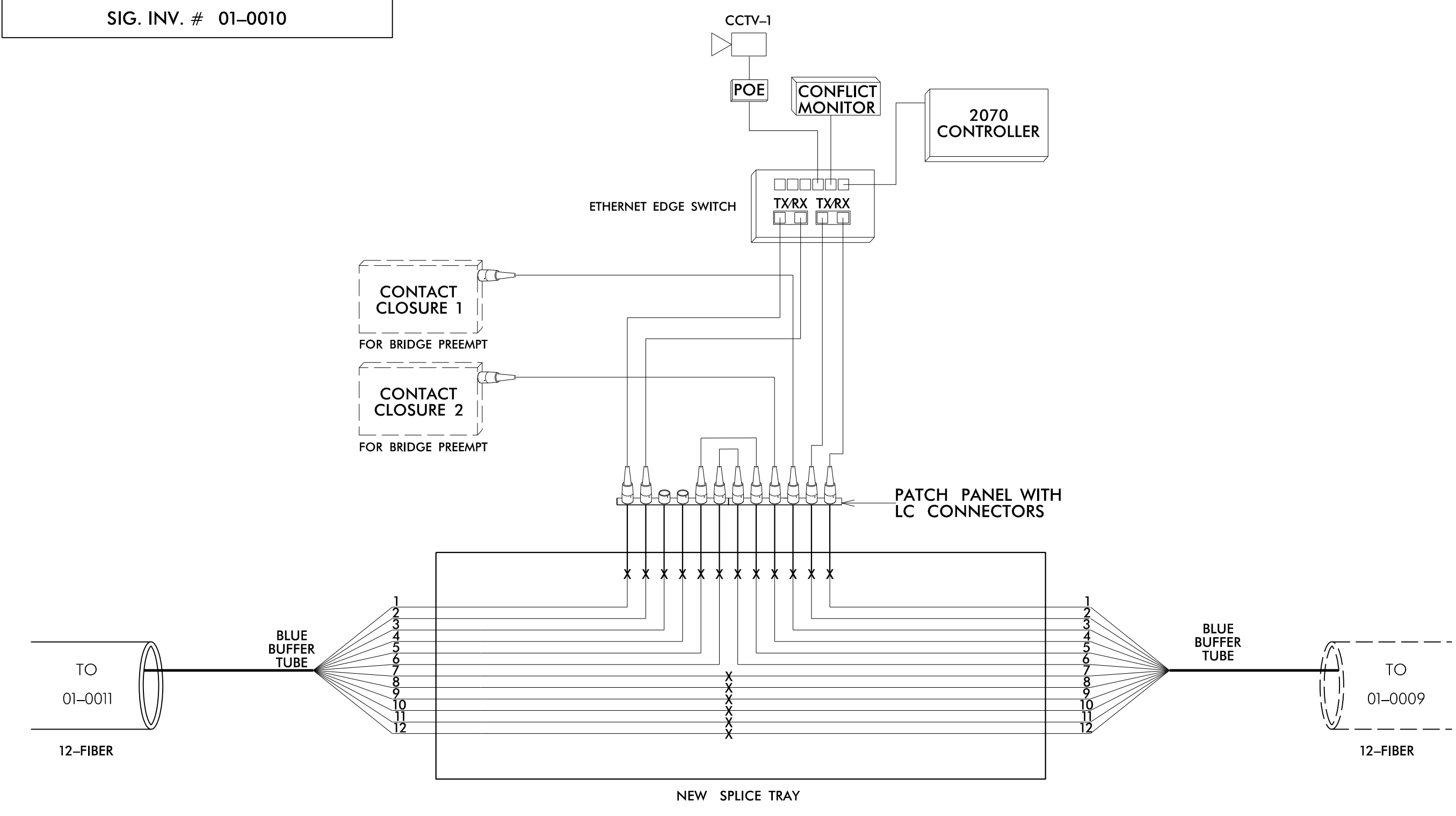
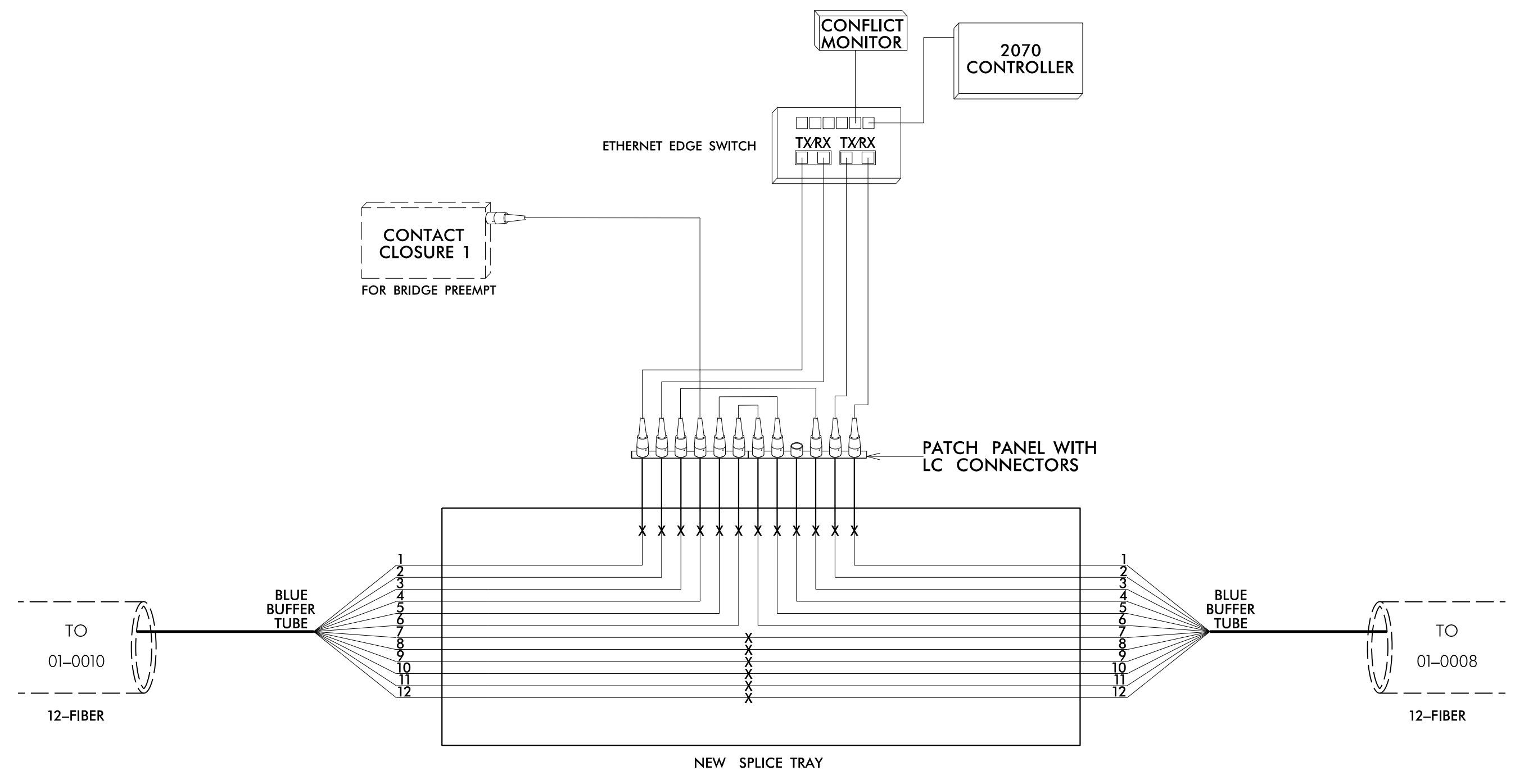


INTERCONNECT CENTER IN
CONTROLLER CABINET
US 158 (Elizabeth St.) at Water St.
SIG. INV. # 01-0010



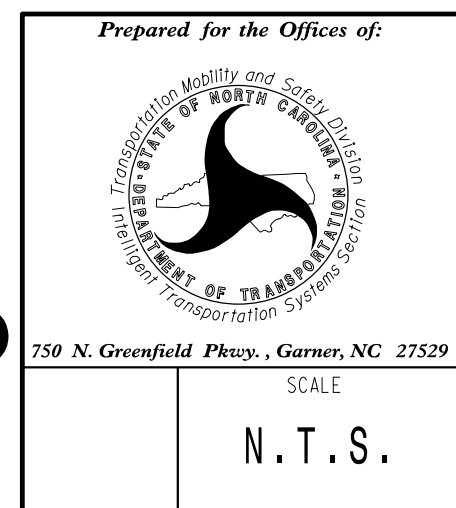
INTERCONNECT CENTER IN
CONTROLLER CABINET
US 158 (Elizabeth St.) at Poindexter St.
SIG. INV. # 01-0009



**DOCUMENT NOT CONSIDERED FINAL
UNLESS ALL SIGNATURES COMPLETED**

Color Code		LEGEND	
TIA/EIA	598-B		
BL (1) Blue	RD (7) Red	X	= Fusion Splice Individual Fiber
OR (2) Orange	BK (8) Black	C	= Cap and Seal
GR (3) Green	YL (9) Yellow	EXPRESS	= Express entire buffer tube/fibers through without cutting
BR (4) Brown	VI (10) Violet	BUFFER SPLICE	= Splice all fibers in buffer tube color to color
SL (5) Slate	RS (11) Rose		
WH (6) White	AQ (12) Aqua		

- NOTES**
- Unused fibers left coiled and stored in splice tray.
 - Unused buffer tubes left coiled and stored in splice enclosure.
 - Edge switch configurations are generic. Contractor is responsible for determining/ensuring the proper terminations.



Elizabeth City Signal System
Fiber-Optic Splicing Details

Division 1	Pasquotank County	Elizabeth City
PLAN DATE: April 2018	REVIEWED BY: J.E. Beck	
PREPARED BY: AJ Davis	REVIEWED BY: LM Moon	
SCALE: N.T.S.		

