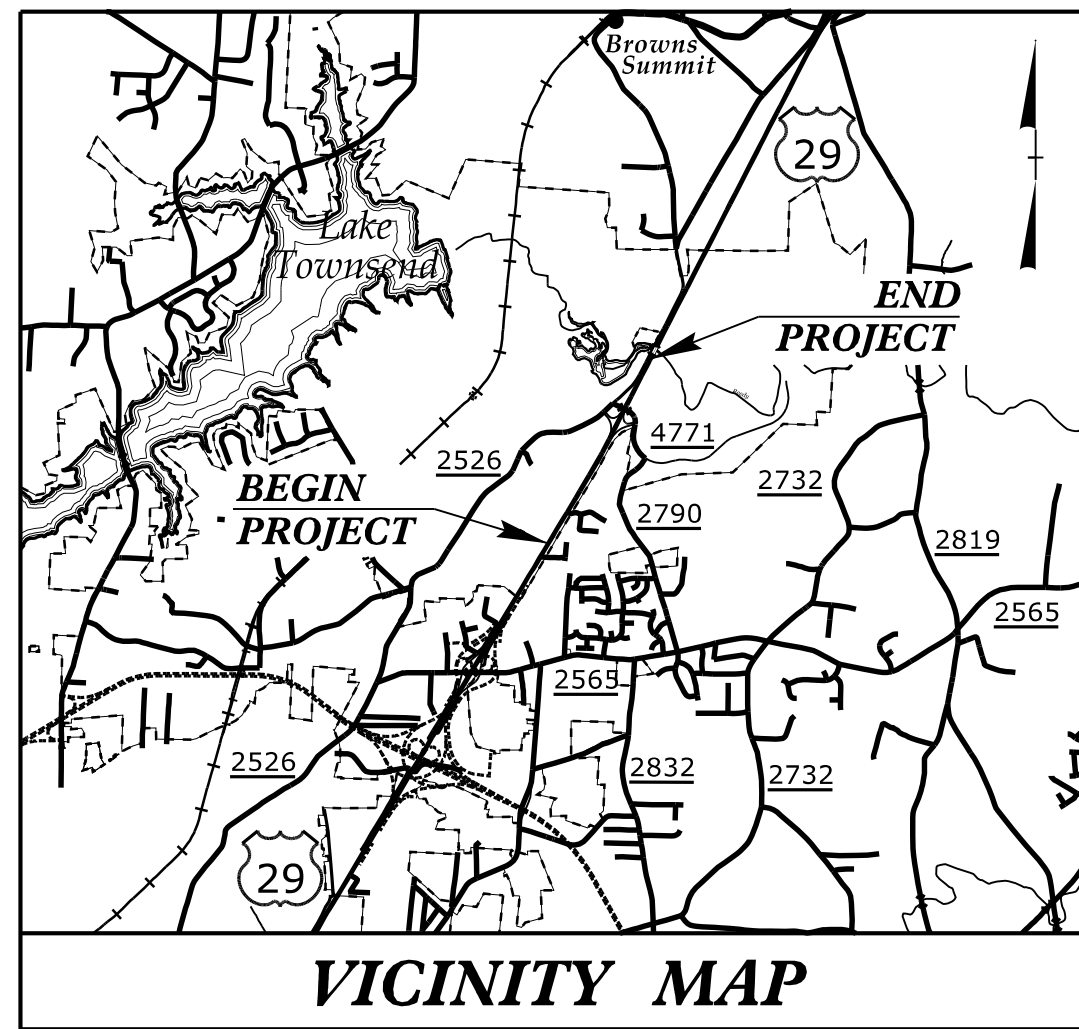


STATE OF NORTH CAROLINA  
DIVISION OF HIGHWAYS

T.I.P. NO.	SHEET NO.
R-4707	UO-1

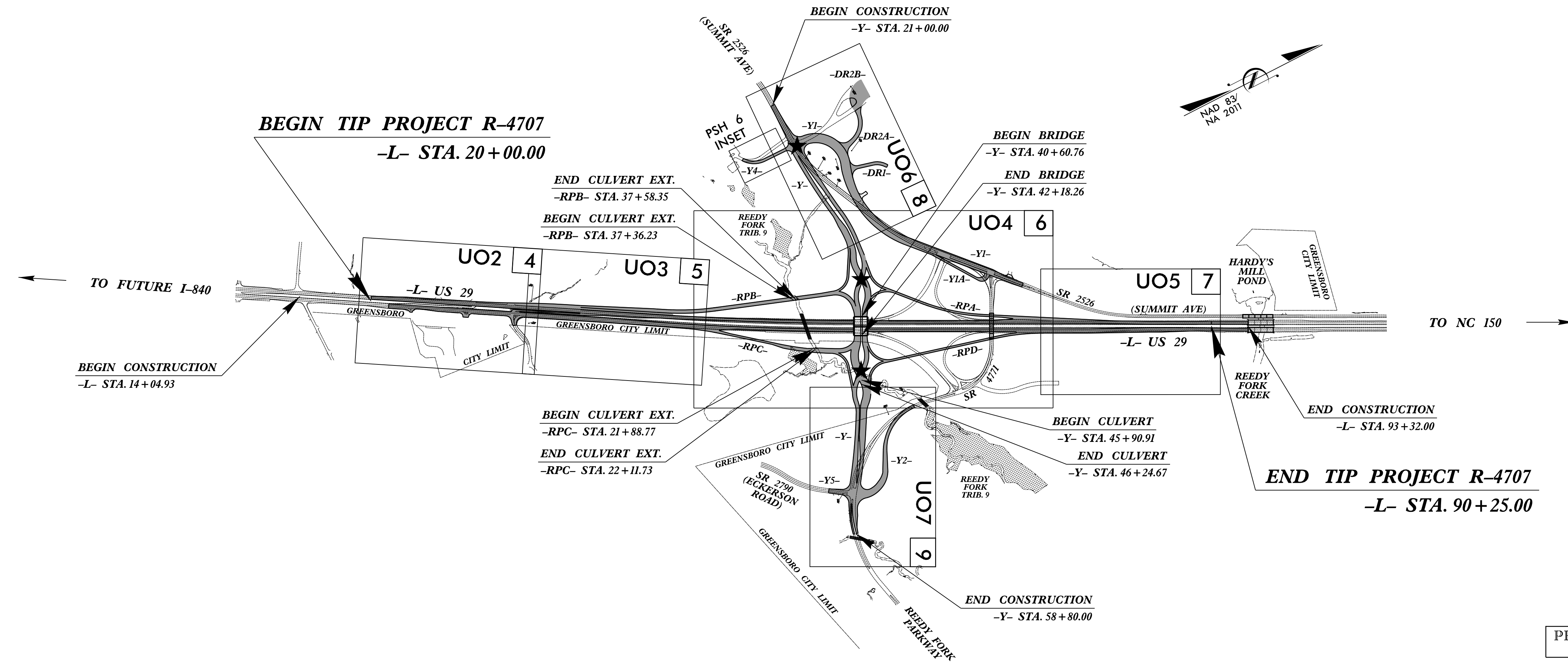
NOTE:  
ALL UTILITY WORK SHOWN ON THIS SHEET WILL BE DONE BY OTHERS. NO PAYMENT WILL BE MADE TO THE CONTRACTOR FOR UTILITY WORK SHOWN ON THIS SHEET.



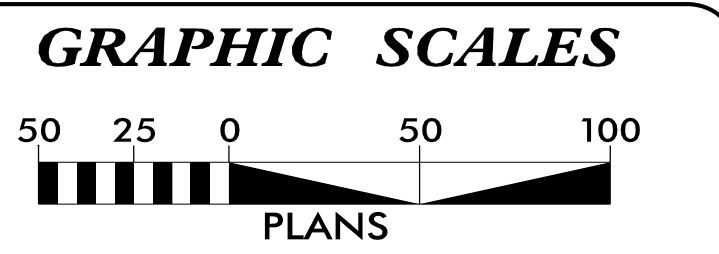
# UTILITIES BY OTHERS PLANS GUILFORD COUNTY

LOCATION: US 29 AND SR 4771 (REEDY FORK PARKWAY)  
INTERCHANGE IMPROVEMENTS; IMPROVE ROADWAY,  
MODIFY INTERCHANGE AND REPLACE BRIDGE 400360

TYPE OF WORK: UTILITY RELOCATION



PRELIMINARY PLANS  
DO NOT USE FOR CONSTRUCTION



SHEET NO.:	DESCRIPTION:
UO-1	TITLE SHEET
UO-2 THRU UO-7	UBO PLAN SHEETS

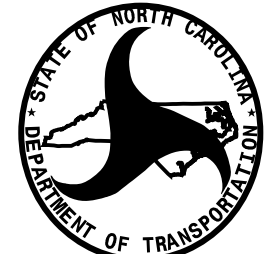
- UTILITY OWNERS WITH CONFLICTS
- (A) POWER - DUKE ENERGY
  - (B) GAS - PIEDMONT NATURAL GAS
  - (C) FIBER OPTIC - CENTURY LINK
  - (D) TELEPHONE - AT&T
  - (E) CABLE TV - CHARTER

PREPARED FOR NCDOT IN THE OFFICE OF:

## Mead & Hunt

111 E. Hargett Street, Suite 300  
Raleigh, North Carolina 27601  
919-714-8670 | meadhunt.com  
NC License No. F-1235

<u>Rick DeCola, PE</u>	PROJECT MANAGER
<u>Kevin Barnes, PE</u>	UTILITY MANAGER
<u>Charlie McClelland</u>	UTILITY COORDINATOR

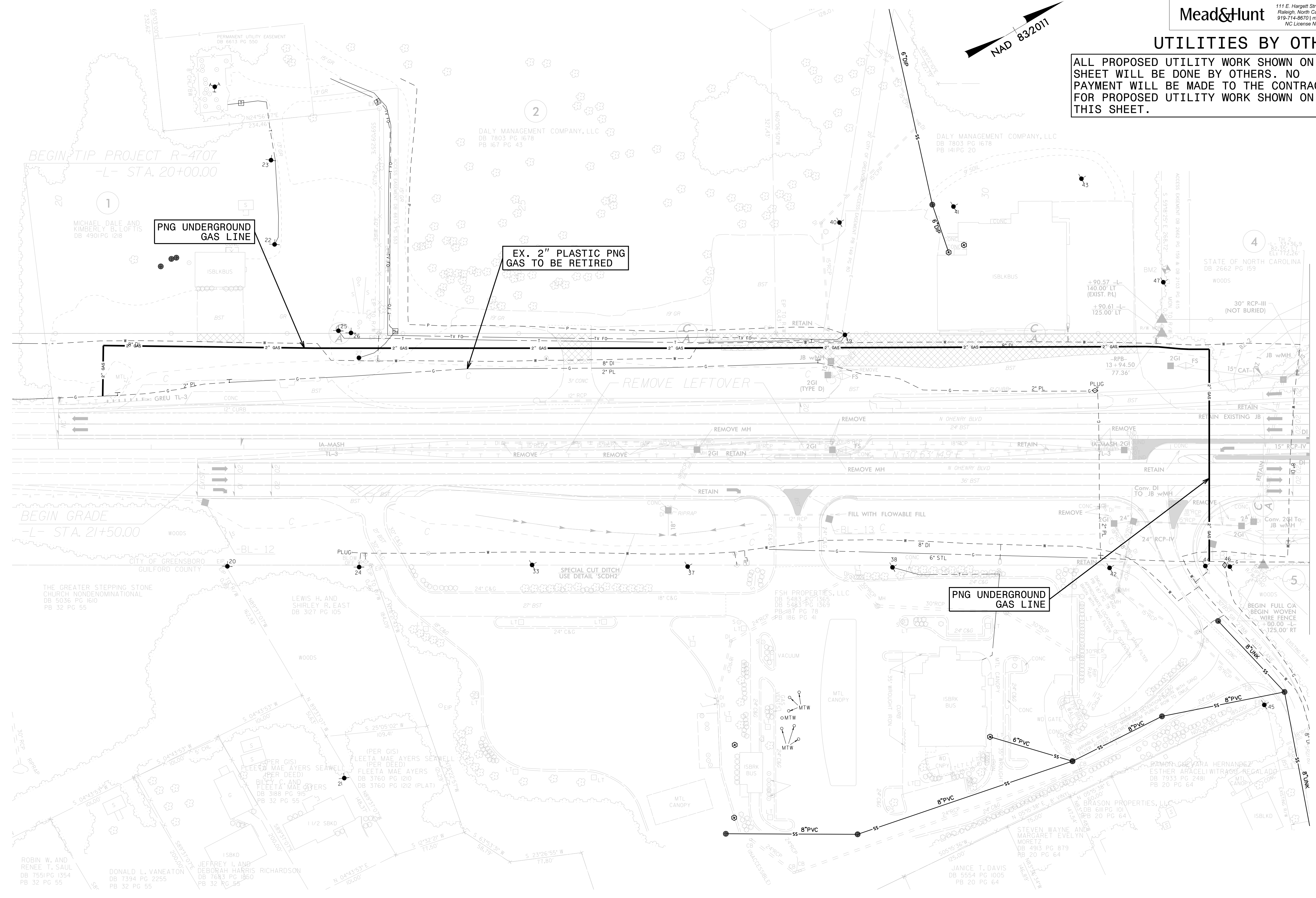
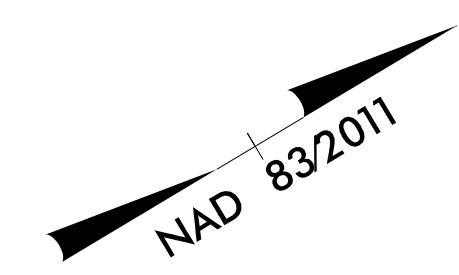


DIVISION OF HIGHWAYS  
UTILITIES UNIT  
1535 MAIL SERVICES CENTER  
RALEIGH NC 27699-1555  
PHONE (919) 707-6690  
FAX (919) 250-4151

<u>Tucker Martin, PE</u>	REGIONAL UTILITIES MANAGER
<u>Ali Kouchehi, PE</u>	REGIONAL UTILITIES ENGINEER
<u>Dayton Martin, III</u>	REGIONAL UTILITY COORDINATOR
<u>O'Hara Parker</u>	UTILITY COORDINATOR

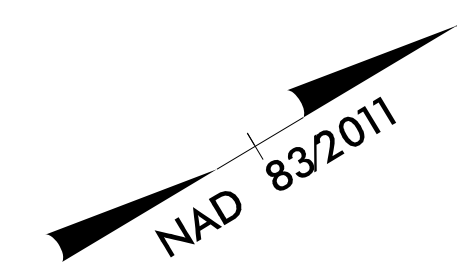
### UTILITIES BY OTHERS

ALL PROPOSED UTILITY WORK SHOWN ON THIS SHEET WILL BE DONE BY OTHERS. NO PAYMENT WILL BE MADE TO THE CONTRACTOR FOR PROPOSED UTILITY WORK SHOWN ON THIS SHEET.



MATCHLINE -L- STA. 33 + 50.00 SEE SHEET UO-3

5/14/99  
 02-MAR-2020 13:54  
 R:\UT-1\4707-U0-2.dwg  
 3:58:58 PM  
 02-MAR-2020 13:54  
 R:\UT-1\4707-U0-2.dwg  
 3:58:58 PM



### UTILITIES BY OTHERS

ALL PROPOSED UTILITY WORK SHOWN ON THIS SHEET WILL BE DONE BY OTHERS. NO PAYMENT WILL BE MADE TO THE CONTRACTOR FOR PROPOSED UTILITY WORK SHOWN ON THIS SHEET.

USE 15:1 SLOPES  
-RPB- STA. 29+00 - 29+50  
DO NOT DISTURB TRANSFORMER

MATCHLINE -L- STA. 33 + 50.00 SEE SHEET U0-2

MATCHLINE -L- STA. 47 + 50.00 SEE SHEET U0-4



EX. 6" STEEL PNG GAS TO BE RETIRED

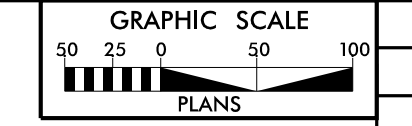
RETAIN EXISTING POLE

PNG UNDERGROUND GAS LINE

5/14/99  
02-MAR-2020 15:54  
R:\UT-1\B\4707-U0-3\03.dgn  
\$\$\$\$

ALL PROPOSED UTILITY WORK SHOWN ON THIS SHEET WILL BE DONE BY OTHERS. NO PAYMENT WILL BE MADE TO THE CONTRACTOR FOR PROPOSED UTILITY WORK SHOWN ON THIS SHEET.

MATCHLINE -Y4- STA. 11+25.00  
SEE SHEET UO-6



PROJECT REFERENCE NO.	SHEET NO.
R-4707	UO-4
THIS SHEET CORRESPONDS TO RDY-6	

Mead&Hunt  
111 E. Hargett Street, Suite 300  
Raleigh, North Carolina 27601  
919-714-8670 | mead&hunt.com  
NC License No. F-1235

### UTILITIES BY OTHERS



MATCHLINE -L- STA. 47+50.00 SEE SHEET UO-3

END CONSTRUCTION  
-Y4- STA. 14+65.00  
FOR -Y4- PROFILE, SEE SHEET 24

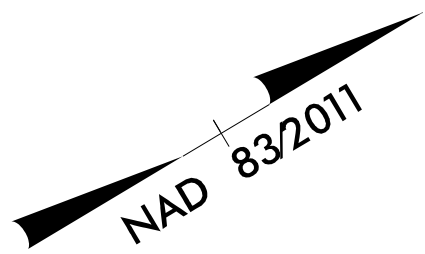
MATCHLINE -Y- STA. 34+00.00  
SEE SHEET UO-6

MATCHLINE -Y1- STA. 27+50.00  
SEE SHEET UO-3

MATCHLINE -Y- STA. 47+00.00 SEE SHEET UO-7

MATCHLINE -L- STA. 76+50.00 SEE SHEET UO-5

DATE PLOTTED: 08/14/2018 11:04:40 AM  
PLOTTER: HP DesignJet T1200

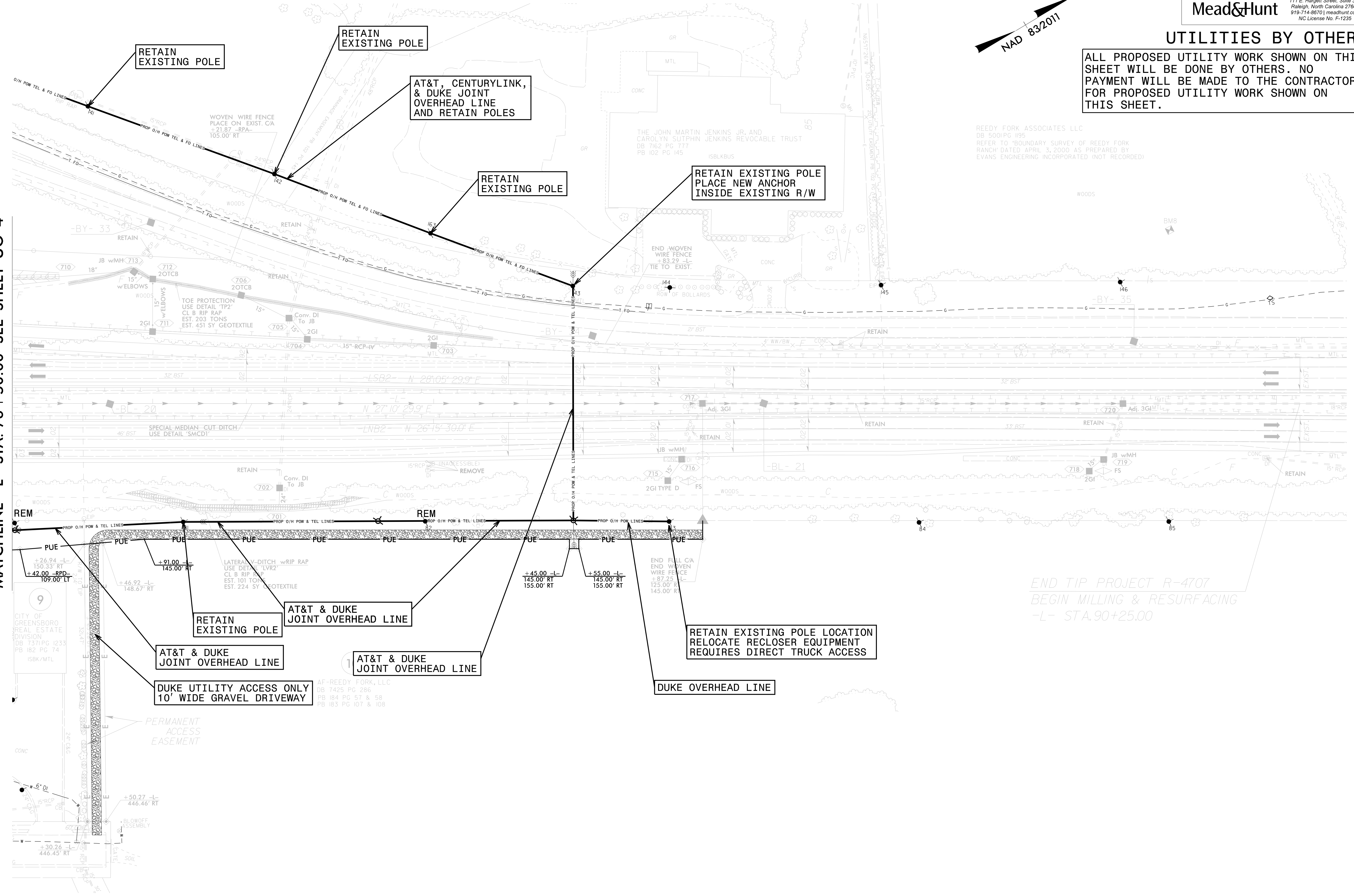


**UTILITIES BY OTHERS**

ALL PROPOSED UTILITY WORK SHOWN ON THIS SHEET WILL BE DONE BY OTHERS. NO PAYMENT WILL BE MADE TO THE CONTRACTOR FOR PROPOSED UTILITY WORK SHOWN ON THIS SHEET.

REEDY FORK ASSOCIATES LLC  
 DB 500/PG 195  
 REFER TO 'BOUNDARY SURVEY OF REEDY FORK RANCH' DATED APRIL 3, 2000 AS PREPARED BY EVANS ENGINEERING INCORPORATED (NOT RECORDED)

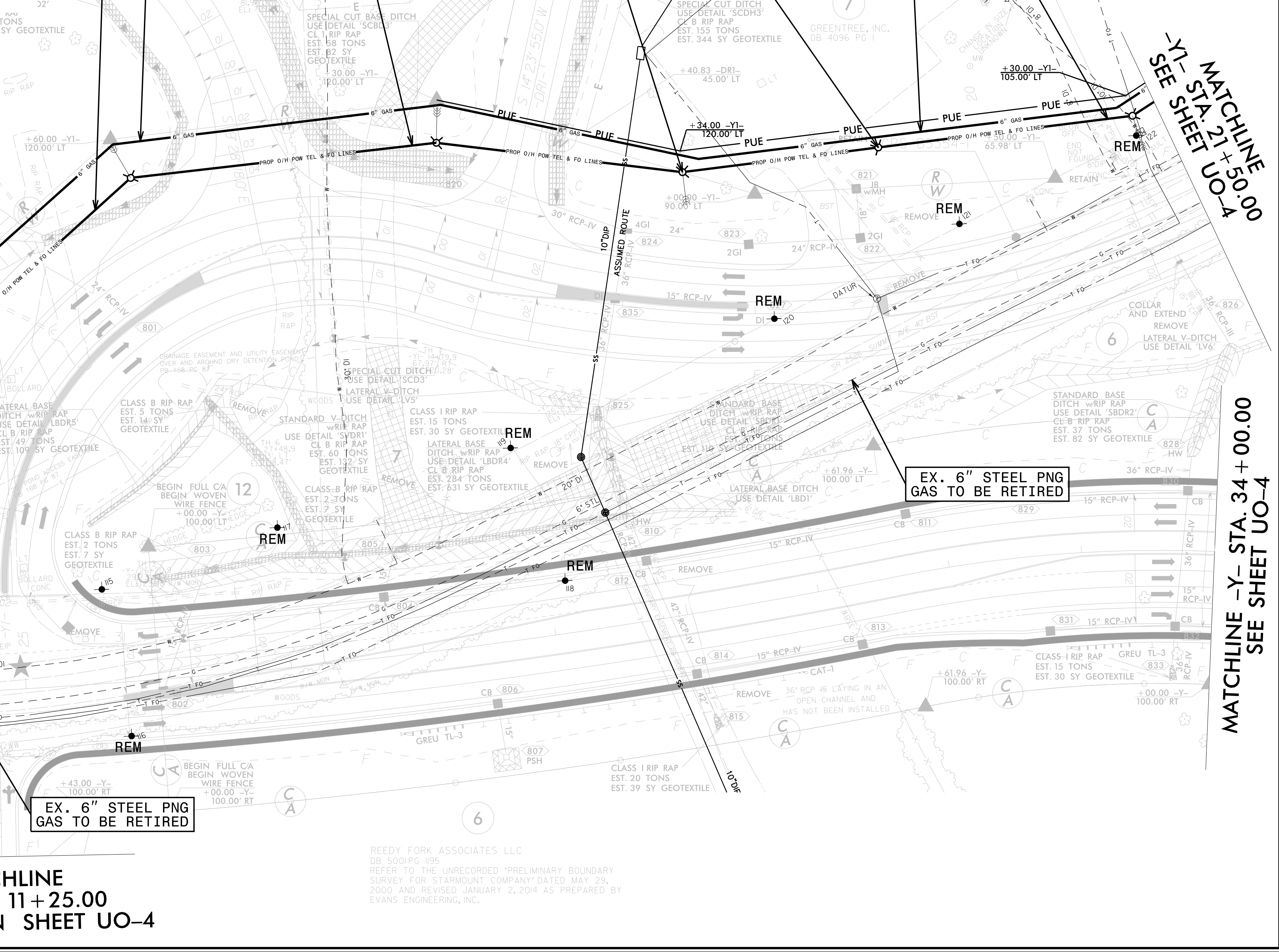
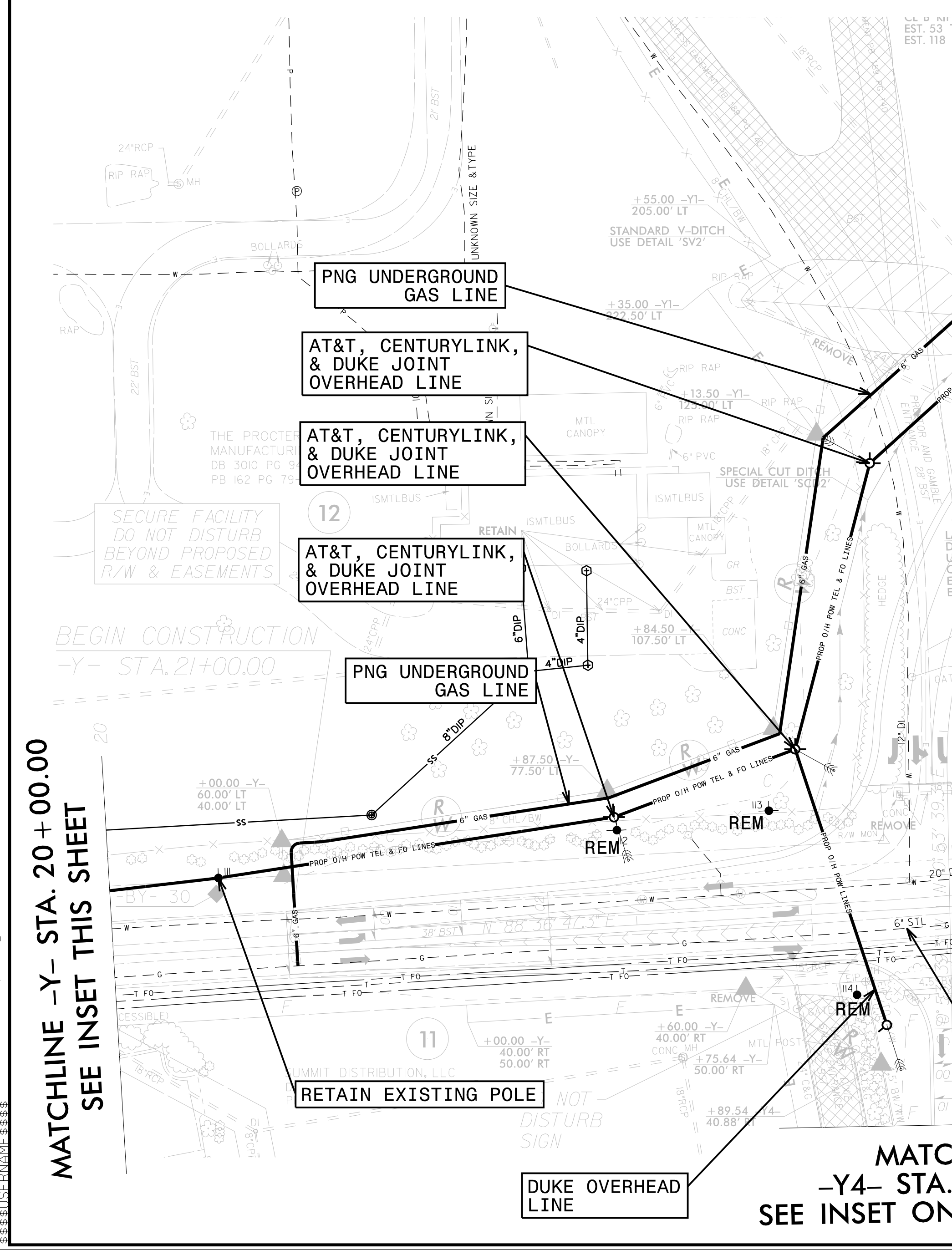
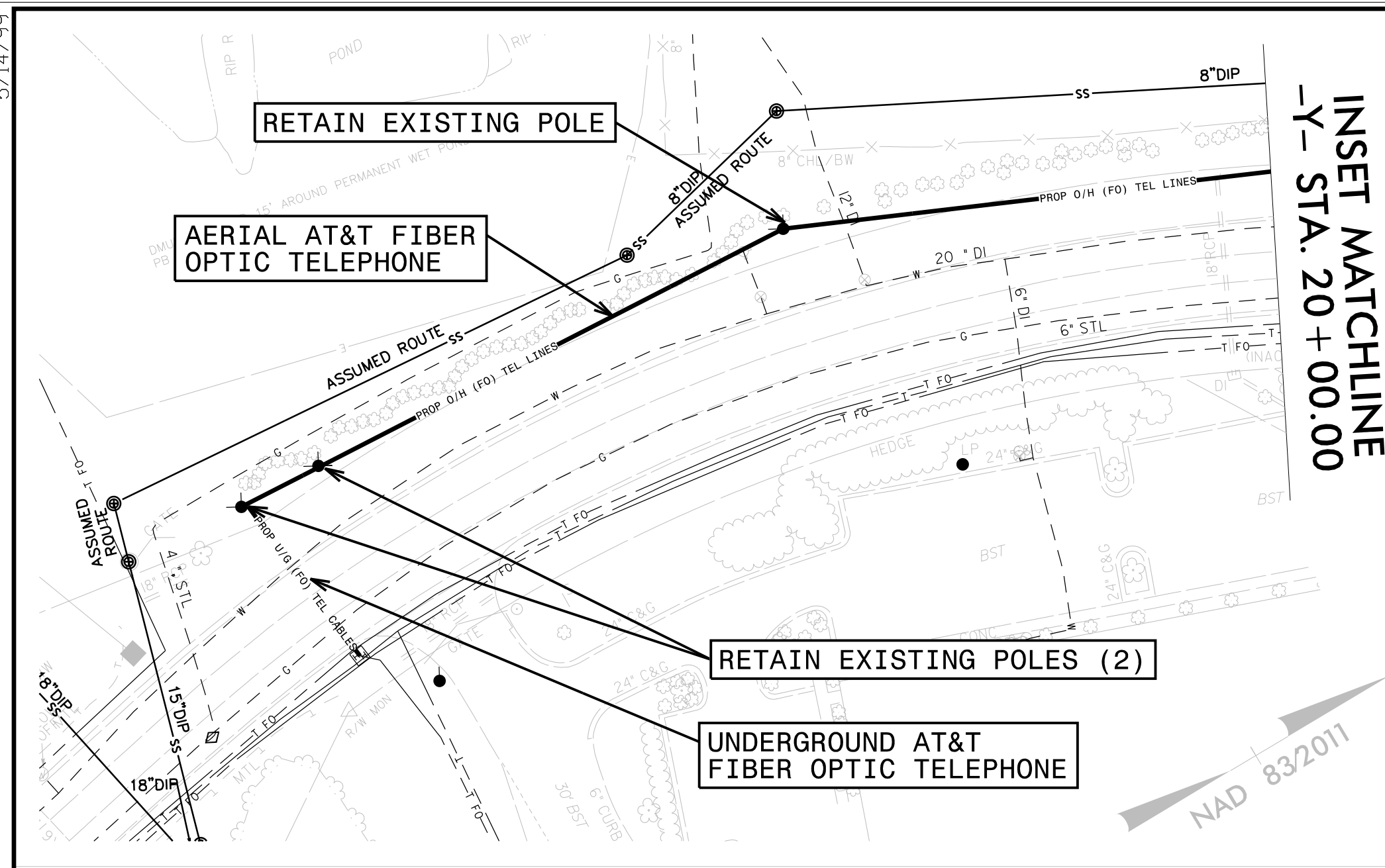
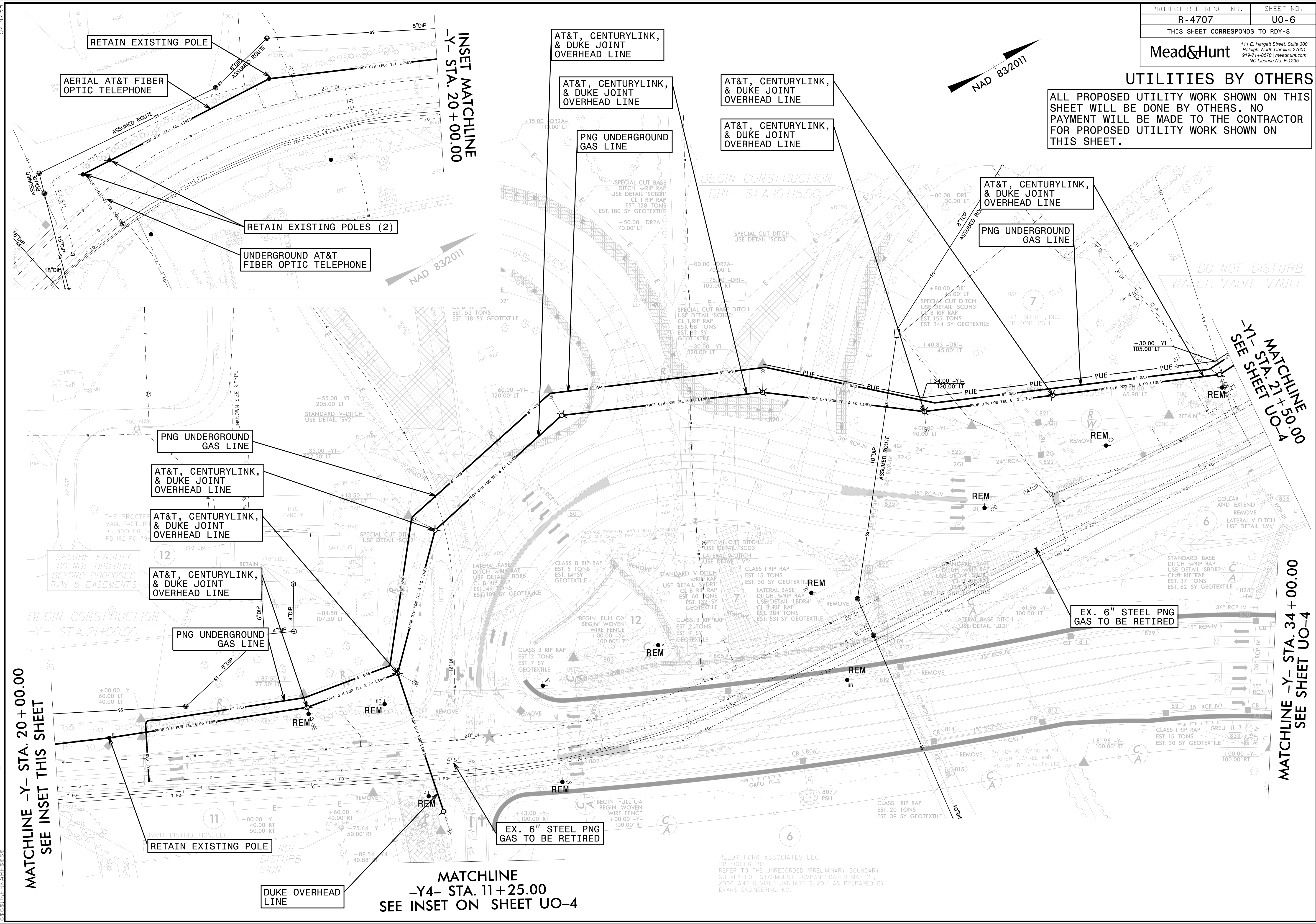
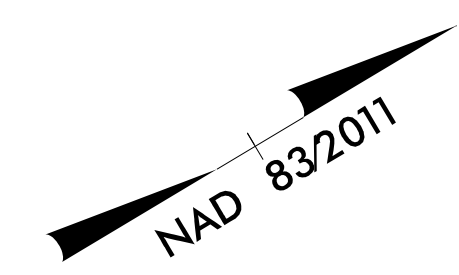
MATCHLINE -L- STA. 76 + 50.00 SEE SHEET UO-4



*END TIP PROJECT R-4707  
 BEGIN MILLING & RESURFACING  
 -L- STA. 90+25.00*

**UTILITIES BY OTHERS**

ALL PROPOSED UTILITY WORK SHOWN ON THIS SHEET WILL BE DONE BY OTHERS. NO PAYMENT WILL BE MADE TO THE CONTRACTOR FOR PROPOSED UTILITY WORK SHOWN ON THIS SHEET.



MATCHLINE -Y- STA. 20+00.00  
SEE INSET THIS SHEET

MATCHLINE  
-Y4- STA. 11+25.00  
SEE INSET ON SHEET UO-4

MATCHLINE  
-Y1- STA. 21+50.00  
SEE SHEET UO-4

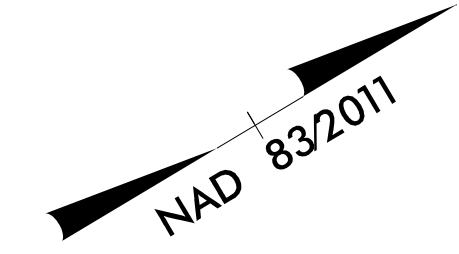
MATCHLINE -Y- STA. 34+00.00  
SEE SHEET UO-4

5/14/99  
02-MAR-2020 15:54  
R:\UT-11\BIB\4707-Ut\_08\_U06.psh.dgn

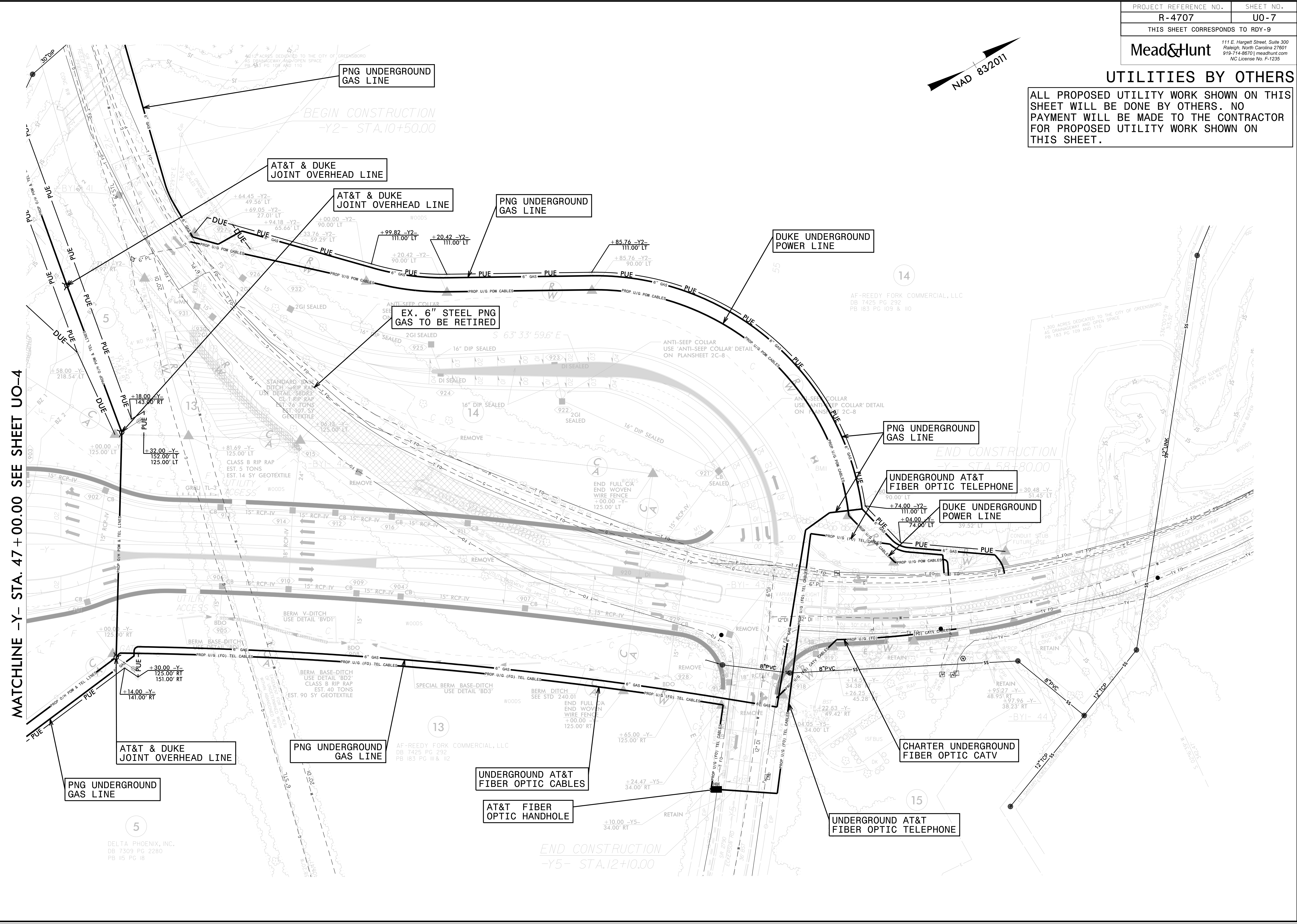
REEDY FORK ASSOCIATES LLC  
 DB 5001PG #95  
 REFER TO THE UNRECORDED "PRELIMINARY BOUNDARY SURVEY FOR STARMOUNT COMPANY" DATED MAY 29, 2000 AND REVISED JANUARY 2, 2014 AS PREPARED BY EVANS ENGINEERING, INC.

**UTILITIES BY OTHERS**

ALL PROPOSED UTILITY WORK SHOWN ON THIS SHEET WILL BE DONE BY OTHERS. NO PAYMENT WILL BE MADE TO THE CONTRACTOR FOR PROPOSED UTILITY WORK SHOWN ON THIS SHEET.



5/14/99  
  
02-MAR-2020 15:54  
RAY-L\j\4707\_U0-7\_psh.dgn



**MATCHLINE -Y- STA. 47 + 00.00 SEE SHEET U0-4**

02-MAR-2020 15:54  
RAY-L\j\4707\_U0-7\_psh.dgn