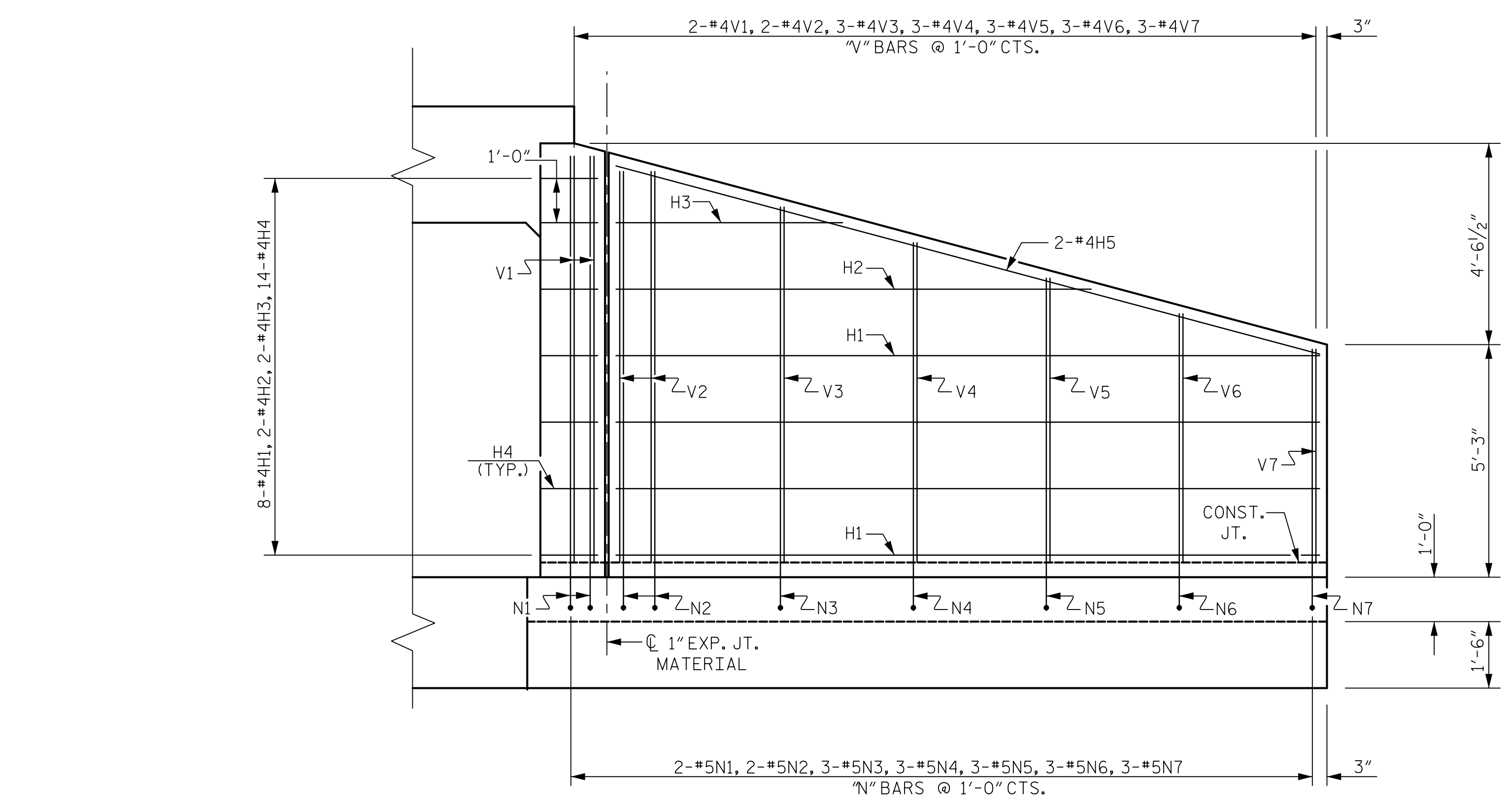
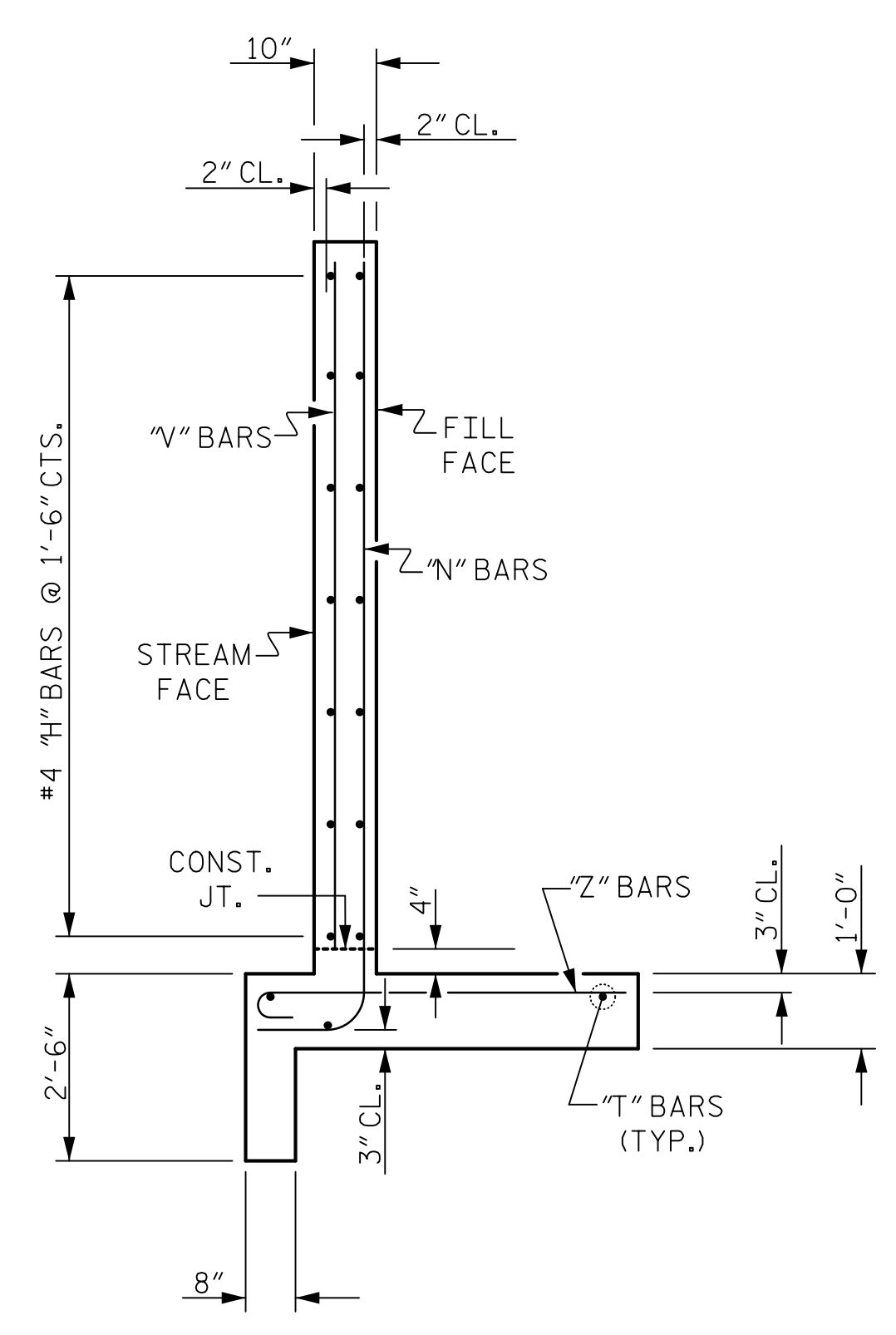


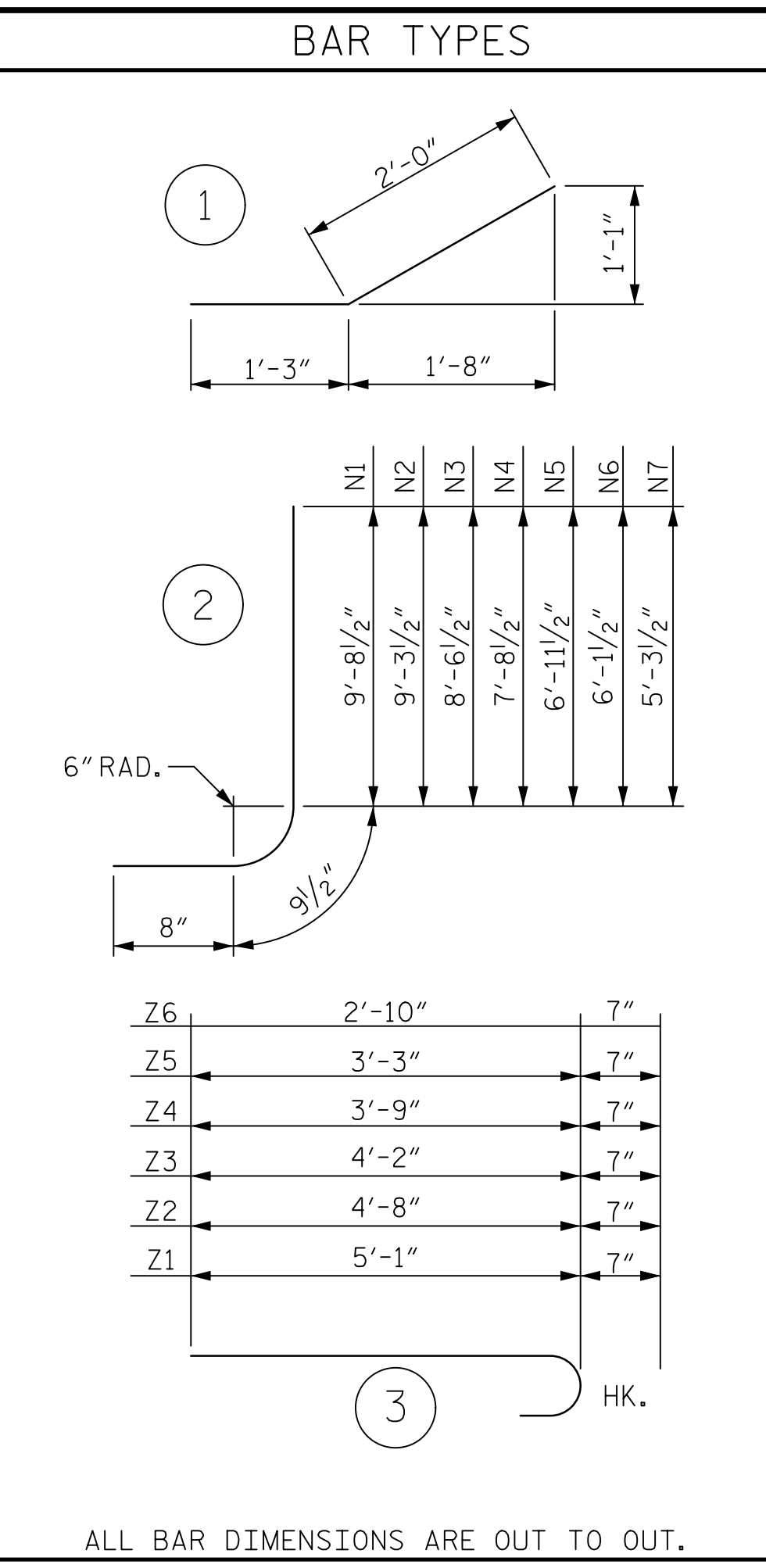
PLAN W3



ELEVATION W3



TYPICAL WING SECTION



BILL OF MATERIAL					
BAR	NO.	SIZE	TYPE	LENGTH	WEIGHT
H1	8	#4	STR	15'-10"	85
H2	2	#4	STR	10'-8"	14
H3	2	#4	STR	5'-1"	7
H4	14	#4	1	3'-3"	30
H5	2	#4	STR	16'-5"	22
N1	2	#5	2	11'-2"	23
N2	2	#5	2	10'-9"	22
N3	3	#5	2	10'-0"	31
N4	3	#5	2	9'-2"	29
N5	3	#5	2	8'-5"	26
N6	3	#5	2	7'-7"	24
N7	3	#5	2	6'-9"	21
S1	3	#6	STR	6'-0"	27
T1	3	#5	STR	17'-6"	55
V1	2	#4	STR	9'-2"	12
V2	2	#4	STR	8'-9"	12
V3	3	#4	STR	8'-0"	16
V4	3	#4	STR	7'-2"	14
V5	3	#4	STR	6'-5"	13
V6	3	#4	STR	5'-7"	11
V7	3	#4	STR	4'-9"	10
Z1	3	#5	3	5'-8"	18
Z2	3	#5	3	5'-3"	16
Z3	3	#5	3	4'-9"	15
Z4	3	#5	3	4'-4"	14
Z5	3	#5	3	3'-10"	12
Z6	3	#5	3	3'-5"	11
REINFORCING STEEL FOR WING W3					590 LBS
CLASS A CONCRETE					
WING W3					7.3 CY
CURTAIN WALL					0.7 CY
TOTAL					8.0 CY

DRAWN BY : J.A. LEE DATE : 03/18/19  
 CHECKED BY : J.S. HOBSON DATE : 04/15/19  
 DESIGN ENGINEER OF RECORD : J.S. HOBSON DATE : 04/26/19

**Mead & Hunt**  
 111 E. Hargett Street  
 Suite 300  
 Raleigh, NC 27601  
 919-714-8670  
 meadhunt.com  
 NC License No. F-1235

SEAL 043177  
 JACK HOBSON S. HOBSON  
 4/16/2020

DOCUMENT NOT CONSIDERED FINAL UNLESS ALL SIGNATURES COMPLETED

PROJECT NO. R-4707  
 GUILFORD COUNTY  
 STATION: 56+34.85 -L-  
 SHEET 15 OF 16

REVISIONS					
NO.	BY:	DATE:	NO.	BY:	DATE:
1			3		
2			4		

SHEET NO. C1-23	
TOTAL SHEETS 24	