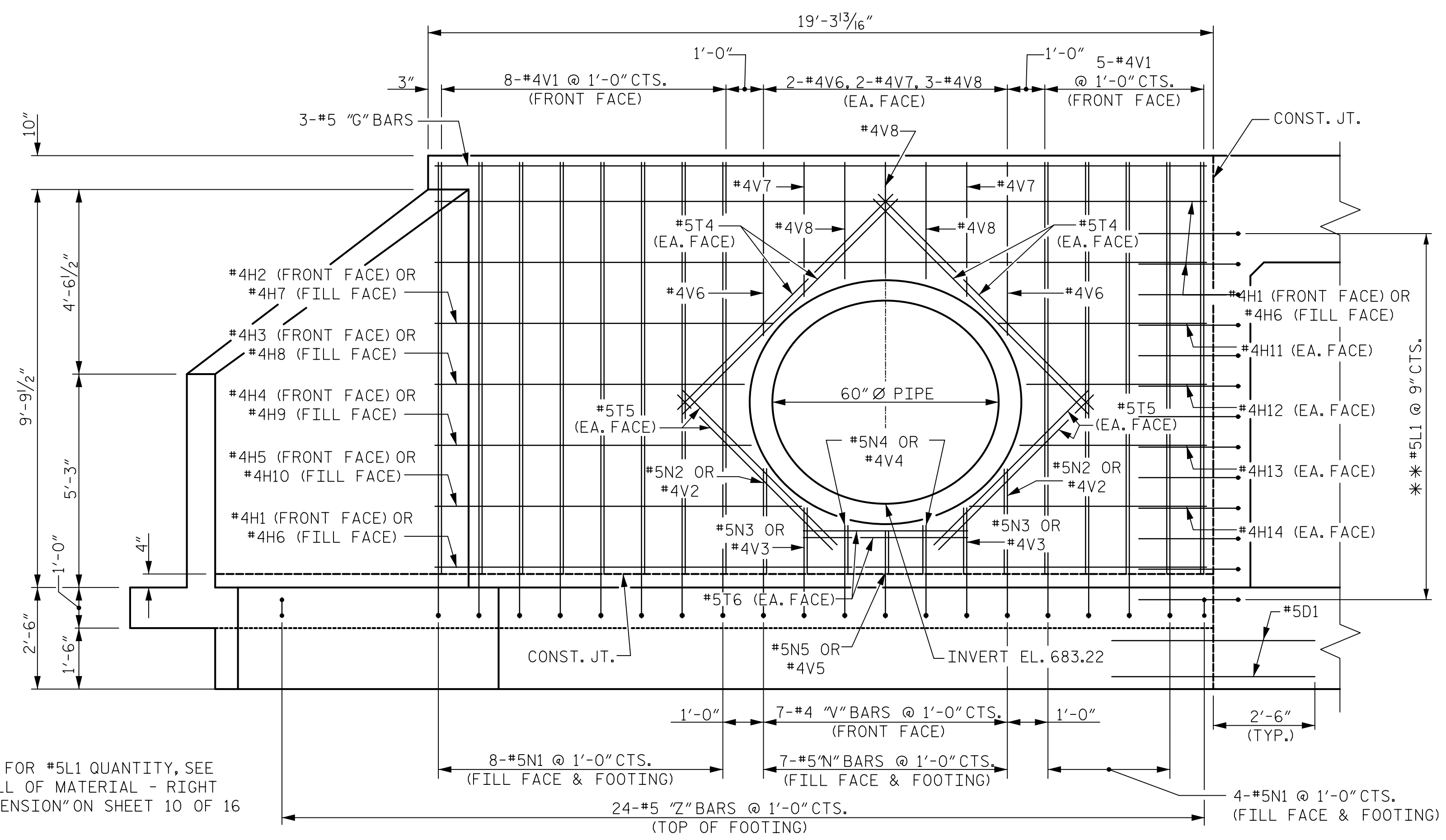
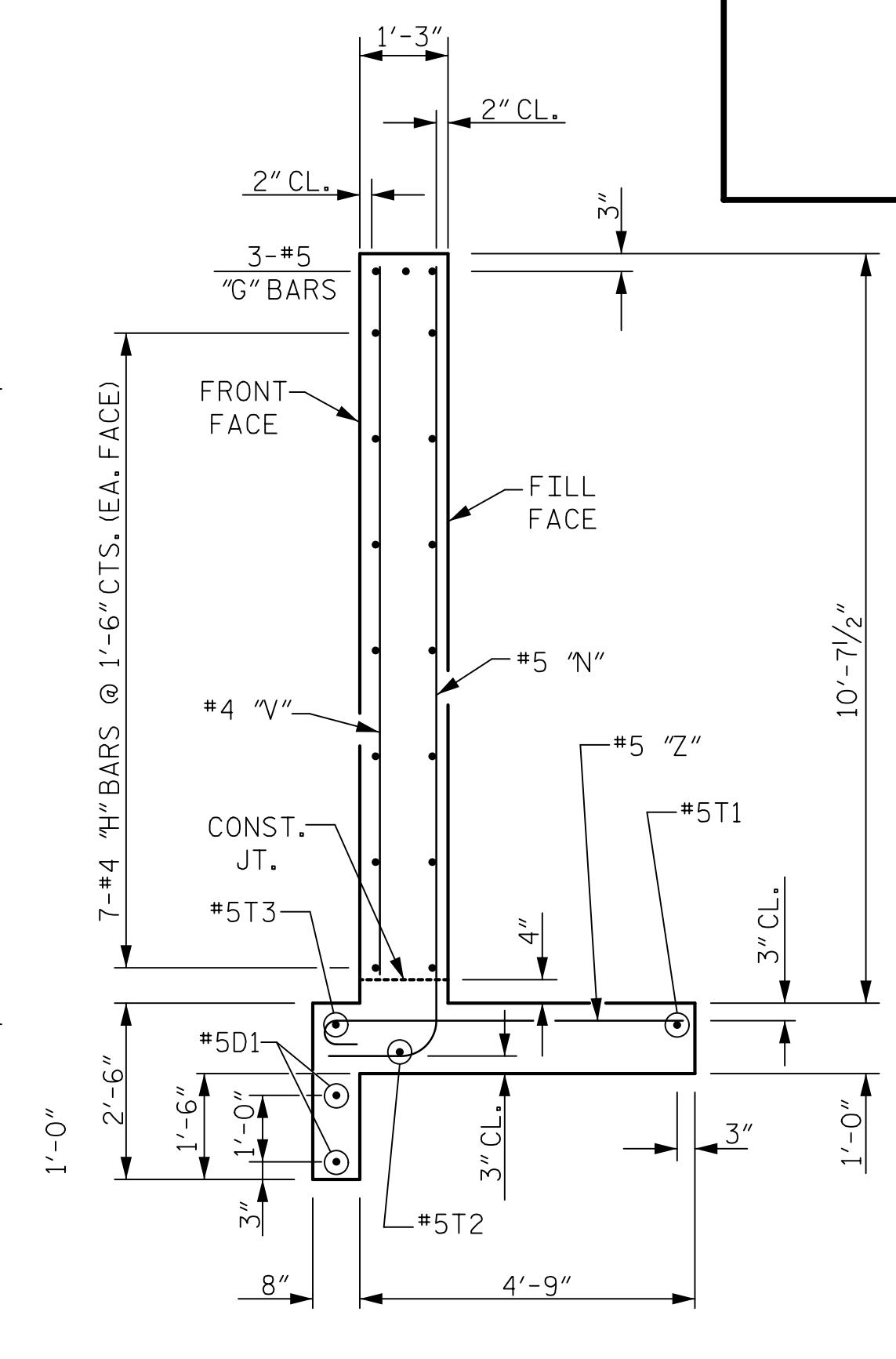


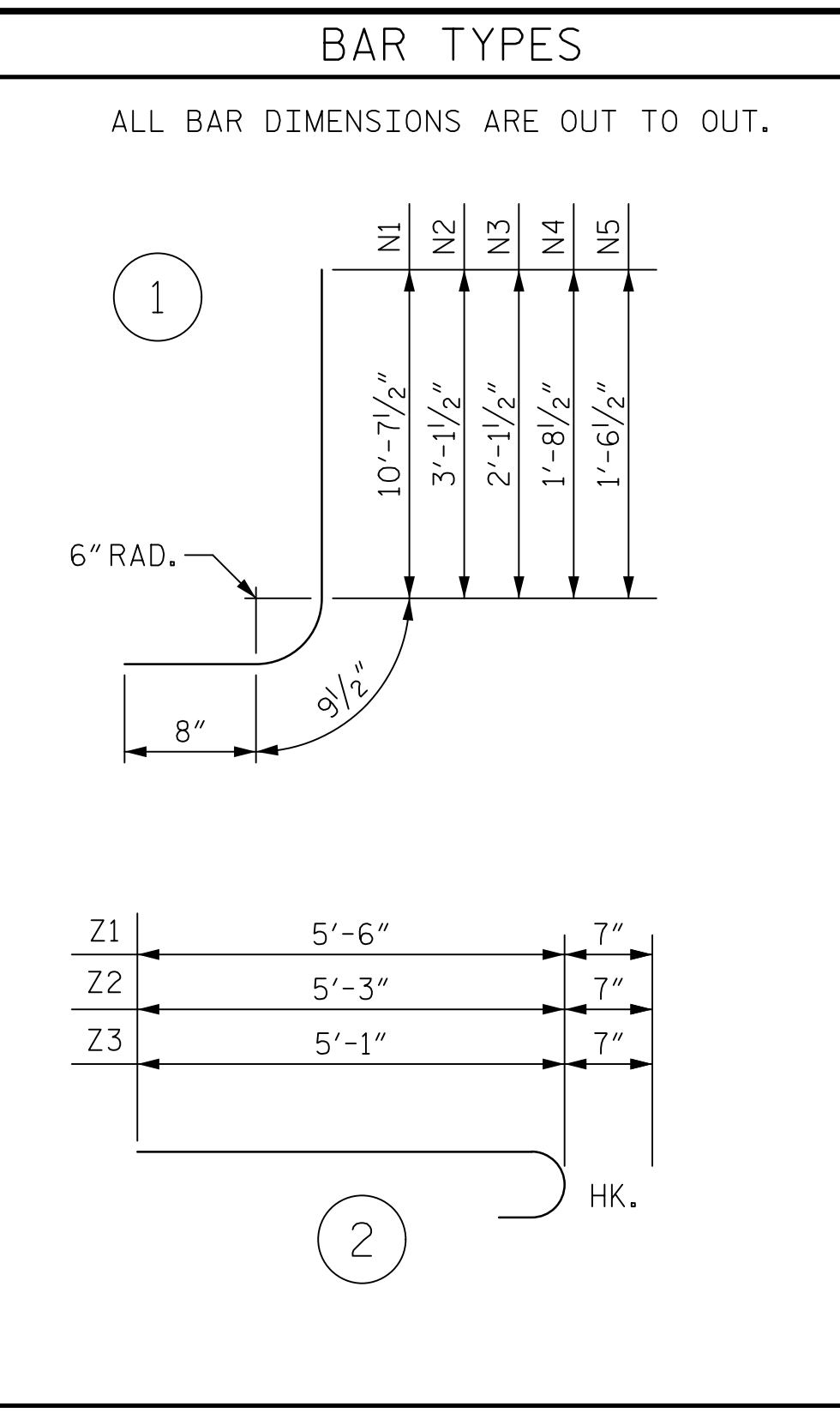
PLAN - 60" Ø PIPE HEADWALL



ELEVATION - 60" Ø PIPE HEADWALL



SECTION A-A

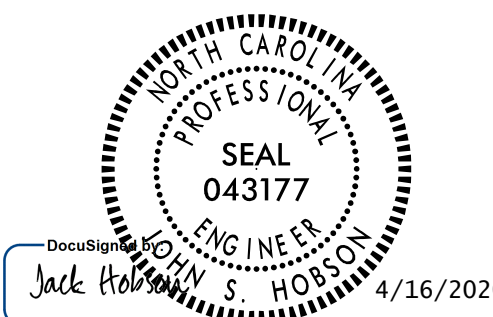


I HEREBY CERTIFY THESE PLANS ARE THE AS-BUILT PLANS

BILL OF MATERIAL					
BAR NO.	NO.	SIZE	TYPE	LENGTH	WEIGHT
D1	2	#5	STR	5'-0"	10
H1	3	#4	STR	18'-10"	38
H2	1	#4	STR	8'-3"	6
H3	1	#4	STR	7'-7"	5
H4	1	#4	STR	7'-9"	5
H5	1	#4	STR	9'-0"	6
H6	3	#4	STR	18'-6"	37
H7	1	#4	STR	7'-10"	5
H8	1	#4	STR	7'-2"	5
H9	1	#4	STR	7'-4"	5
H10	1	#4	STR	8'-7"	6
H11	2	#4	STR	5'-0"	7
H12	2	#4	STR	4'-4"	6
H13	2	#4	STR	4'-6"	6
H14	2	#4	STR	5'-9"	8
G1	1	#5	STR	18'-10"	20
G2	1	#5	STR	18'-8"	19
G3	1	#5	STR	18'-6"	19
N1	12	#5	1	12'-1"	151
N2	2	#5	1	4'-7"	10
N3	2	#5	1	3'-7"	7
N4	2	#5	1	3'-2"	7
N5	1	#5	1	3'-0"	3
T1	1	#5	STR	18'-11"	20
T2	1	#5	STR	22'-3"	23
T3	1	#5	STR	23'-2"	24
T4	8	#5	STR	7'-6"	63
T5	8	#5	STR	5'-5"	45
T6	4	#5	STR	4'-1"	17
V1	13	#4	STR	10'-1"	88
V2	2	#4	STR	2'-7"	3
V3	2	#4	STR	1'-7"	2
V4	2	#4	STR	1'-2"	2
V5	1	#4	STR	1'-0"	1
V6	4	#4	STR	4'-2"	11
V7	4	#4	STR	3'-3"	9
V8	6	#4	STR	2'-8"	11
Z1	2	#5	2	6'-1"	13
Z2	2	#5	2	5'-10"	12
Z3	2	#5	2	5'-8"	118
REINFORCING STEEL (60" Ø PIPE HEADWALL)					853 LBS
CLASS A CONCRETE (60" Ø PIPE HEADWALL)					12.6 CY

** FOR #5L1 QUANTITY, SEE 'BILL OF MATERIAL - RIGHT EXTENSION' ON SHEET 10 OF 16

Mead & Hunt
 111 E. Hargett Street
 Suite 300
 Raleigh, NC 27601
 919-714-8670
 meadhunt.com
 NC License No. F-1235



PROJECT NO. R-4707
GUILFORD COUNTY
 STATION: 56+34.85 -L-
 SHEET 14 OF 16

STATE OF NORTH CAROLINA
 DEPARTMENT OF TRANSPORTATION
 RALEIGH
60" Ø PIPE HEADWALL
 (RIGHT EXTENSION)

DRAWN BY : J.A. LEE DATE : 03/26/19
 CHECKED BY : J.S. HOBSON DATE : 04/15/19
 DESIGN ENGINEER OF RECORD : J.S. HOBSON DATE : 04/26/19

DOCUMENT NOT CONSIDERED FINAL UNLESS ALL SIGNATURES COMPLETED

REVISIONS						SHEET NO.
NO.	BY:	DATE:	NO.	BY:	DATE:	C1-22
1			3			TOTAL SHEETS
2			4			24