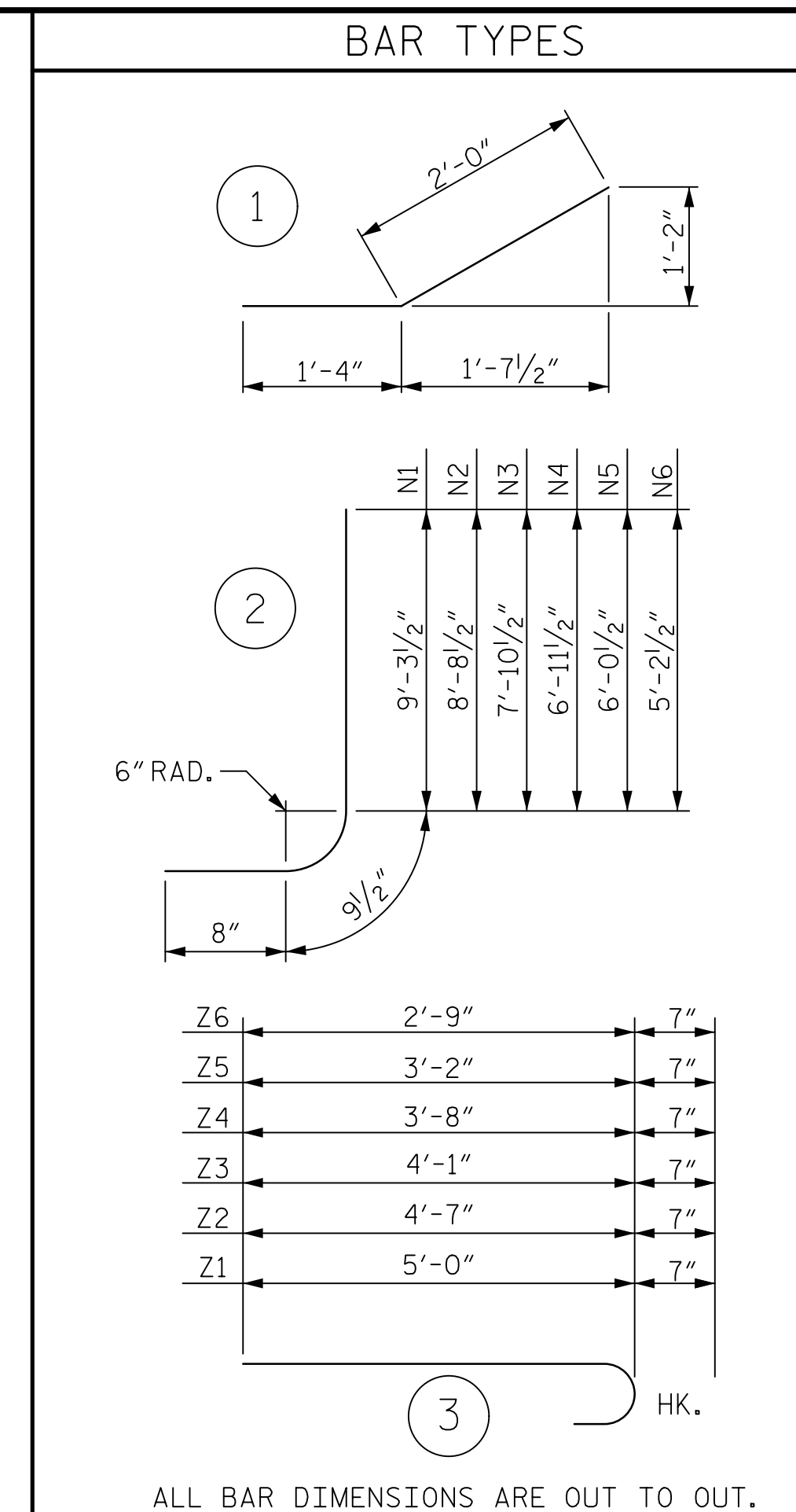
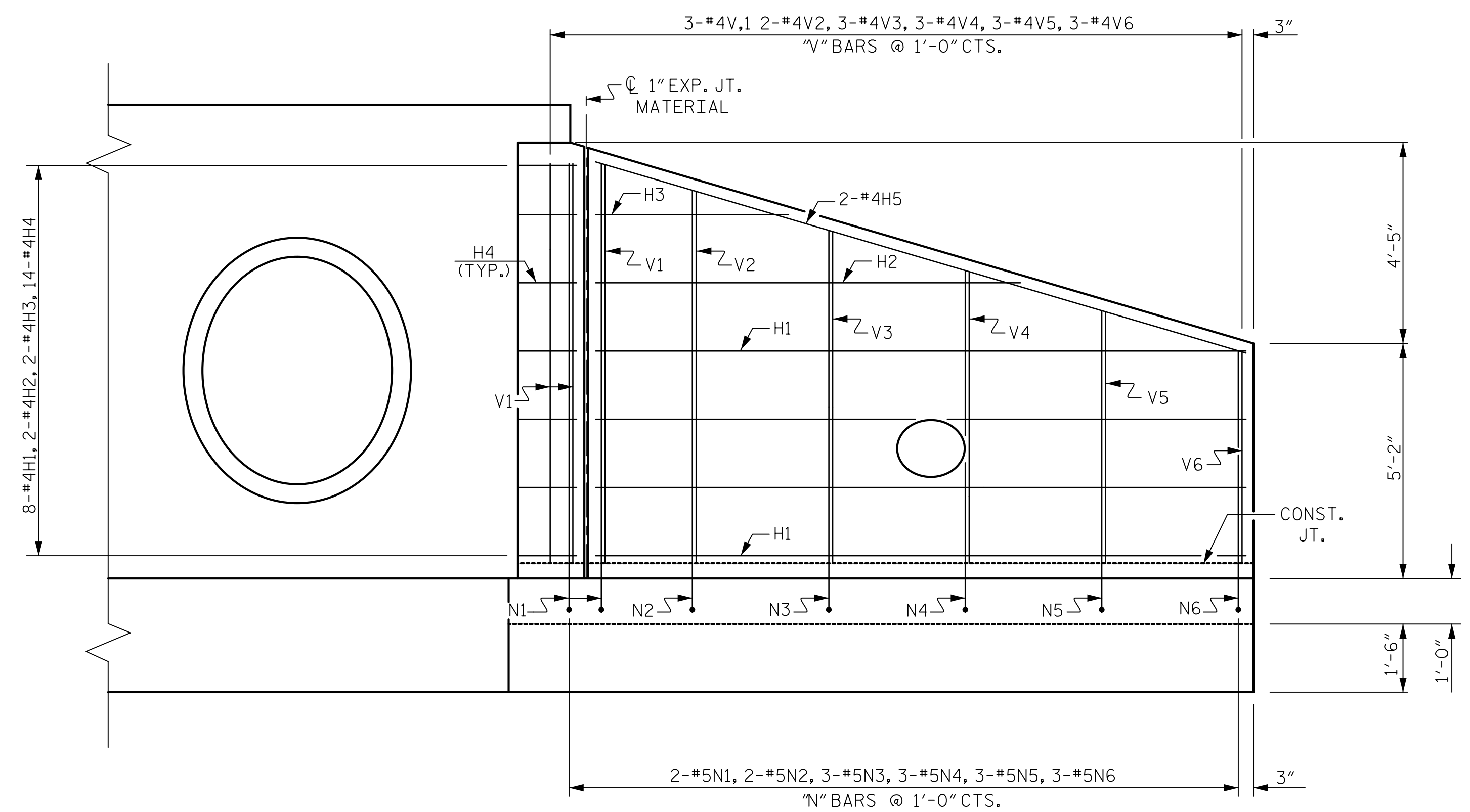


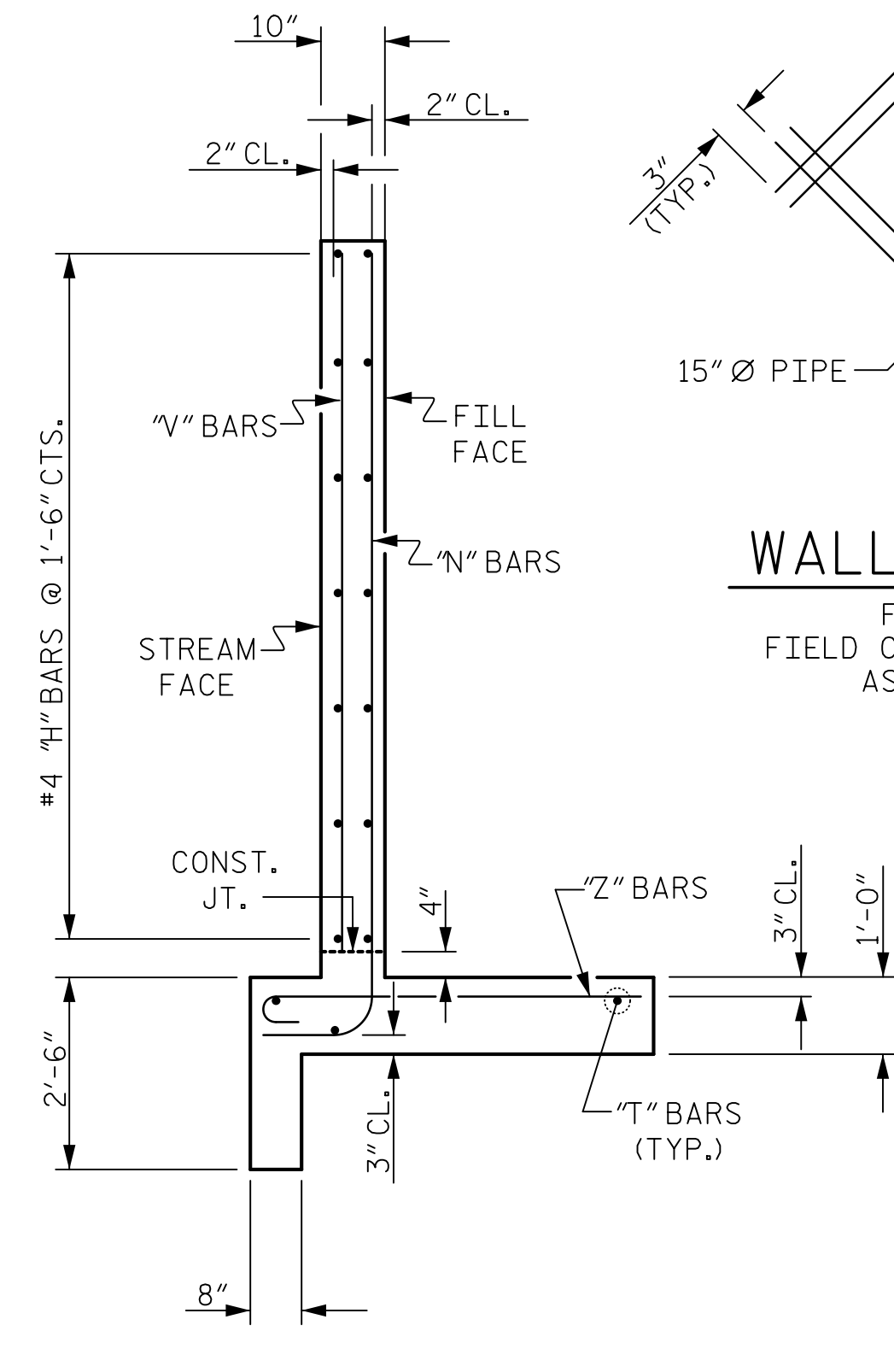
PLAN W2



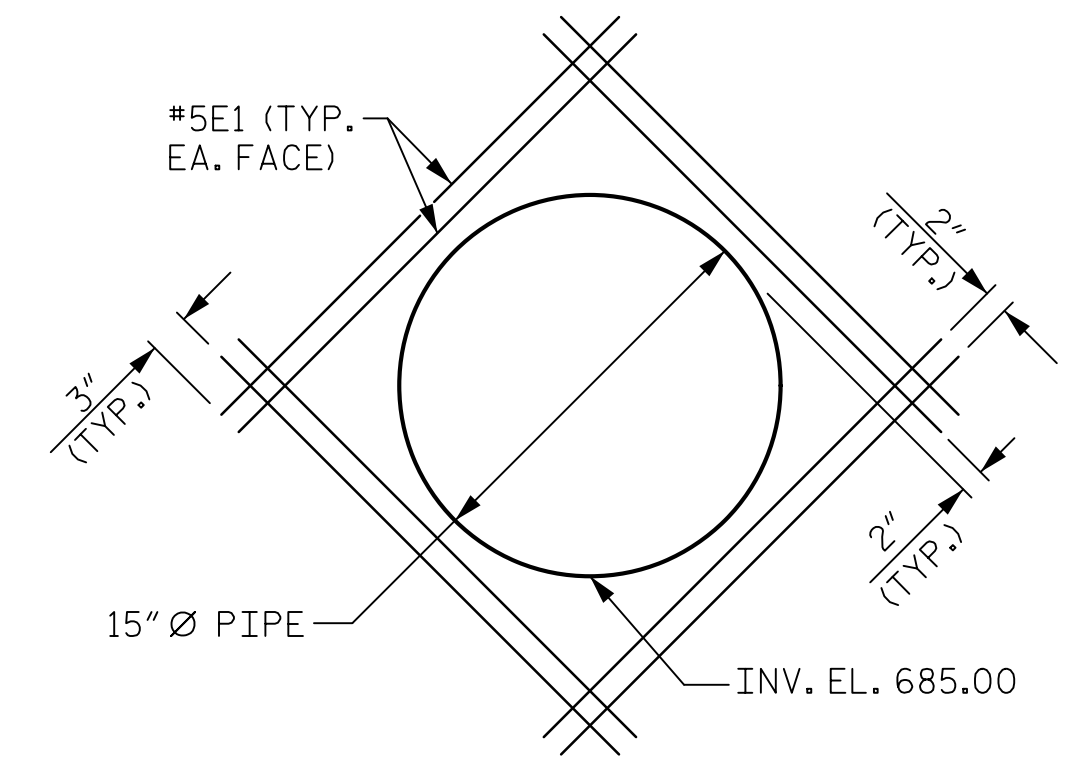
BILL OF MATERIAL					
BAR NO.	NO.	SIZE	TYPE	LENGTH	WEIGHT
E1	16	#5	STR	2'-8"	45
H1	8	#4	STR	14'-3"	76
H2	2	#4	STR	9'-2"	12
H3	2	#4	STR	4'-1"	5
H4	14	#4	1	3'-4"	31
H5	2	#4	STR	14'-10"	20
N1	2	#5	2	10'-9"	22
N2	2	#5	2	10'-2"	21
N3	3	#5	2	9'-4"	29
N4	3	#5	2	8'-5"	26
N5	3	#5	2	7'-6"	23
N6	3	#5	2	6'-8"	21
S1	3	#6	STR	7'-0"	32
T1	1	#5	STR	17'-6"	18
T2	2	#5	STR	16'-1"	34
V1	3	#4	STR	8'-9"	18
V2	2	#4	STR	8'-2"	11
V3	3	#4	STR	7'-4"	15
V4	3	#4	STR	6'-5"	13
V5	3	#4	STR	5'-6"	11
V6	3	#4	STR	4'-8"	9
Z1	1	#5	3	5'-7"	6
Z2	3	#5	3	5'-2"	16
Z3	3	#5	3	4'-8"	15
Z4	3	#5	3	4'-3"	13
Z5	3	#5	3	3'-9"	12
Z6	3	#5	3	3'-4"	10
REINFORCING STEEL FOR WING W2				564	LBS
CLASS A CONCRETE WING W2				6.1	CY
CURTAIN WALL				0.6	CY
TOTAL				6.7	CY



ELEVATION W2

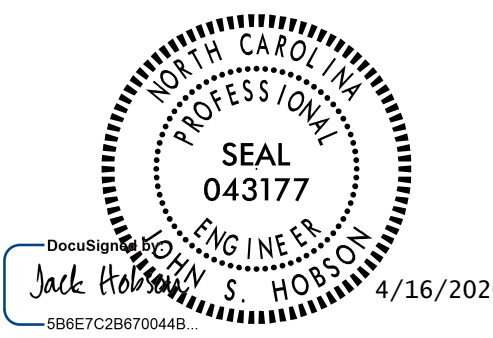


TYPICAL WING SECTION



WALL OPENING DETAIL
FOR PIPE THROUGH W2 WALL.
FIELD CUT, SHIFT, OR BEND "N", "H", AND "V"
AS NECESSARY TO CLEAR PIPE.

Mead & Hunt
111 E. Hargett Street
Suite 300
Raleigh, NC 27601
919-714-8670
meadhunt.com
NC License No. F-1235



PROJECT NO. R-4707
GUILFORD COUNTY
STATION: 56+34.85 -L-
SHEET 13 OF 16

STATE OF NORTH CAROLINA
DEPARTMENT OF TRANSPORTATION
RALEIGH
WING W2
FOR
CONCRETE BOX CULVERT
(LEFT EXTENSION)
H=8'-0" SLOPE=2:1

DRAWN BY : J.A. LEE DATE : 03/18/19
CHECKED BY : J.S. HOBSON DATE : 04/15/19
DESIGN ENGINEER OF RECORD : J.S. HOBSON DATE : 04/26/19

DOCUMENT NOT CONSIDERED
FINAL UNLESS ALL
SIGNATURES COMPLETED

REVISIONS						SHEET NO.	
NO.	BY:	DATE:	NO.	BY:	DATE:	C1-21	
1			3			TOTAL SHEETS	
2			4			24	