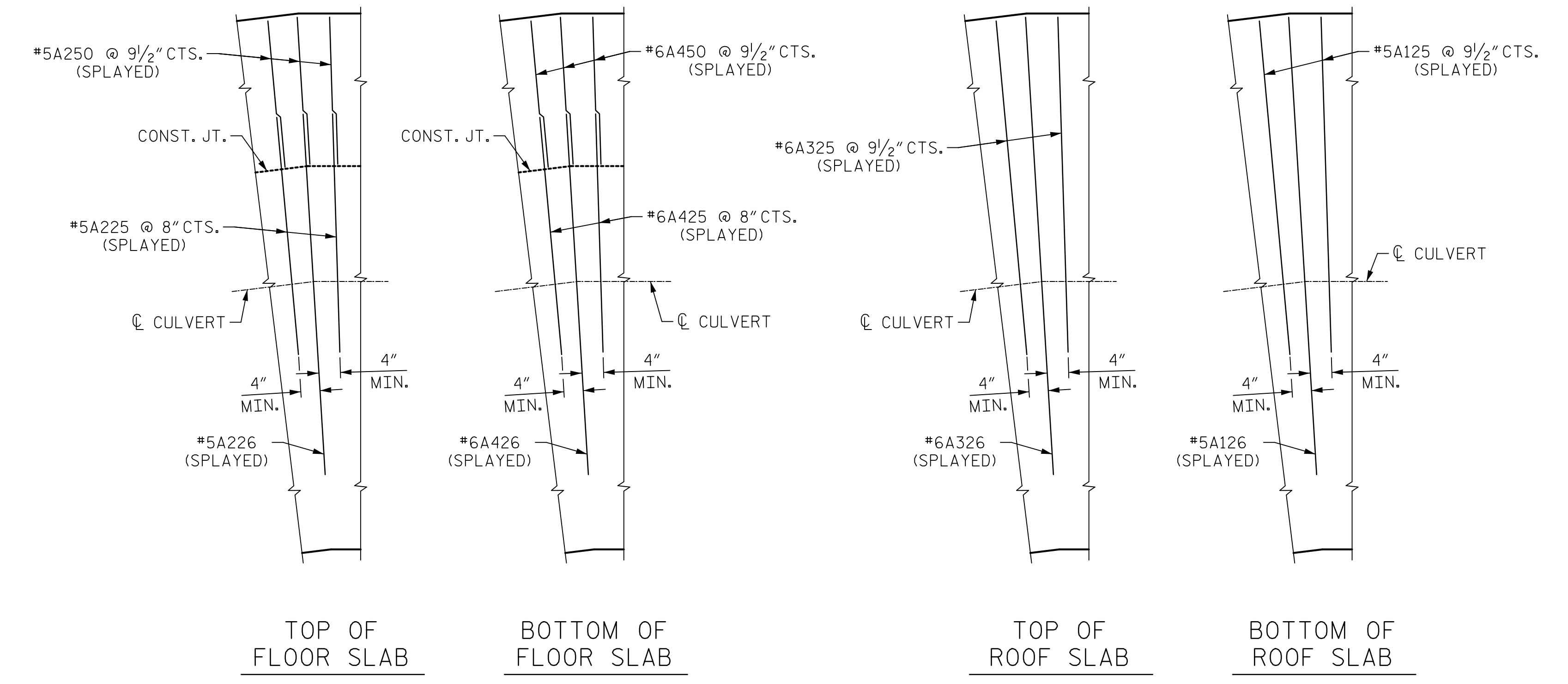
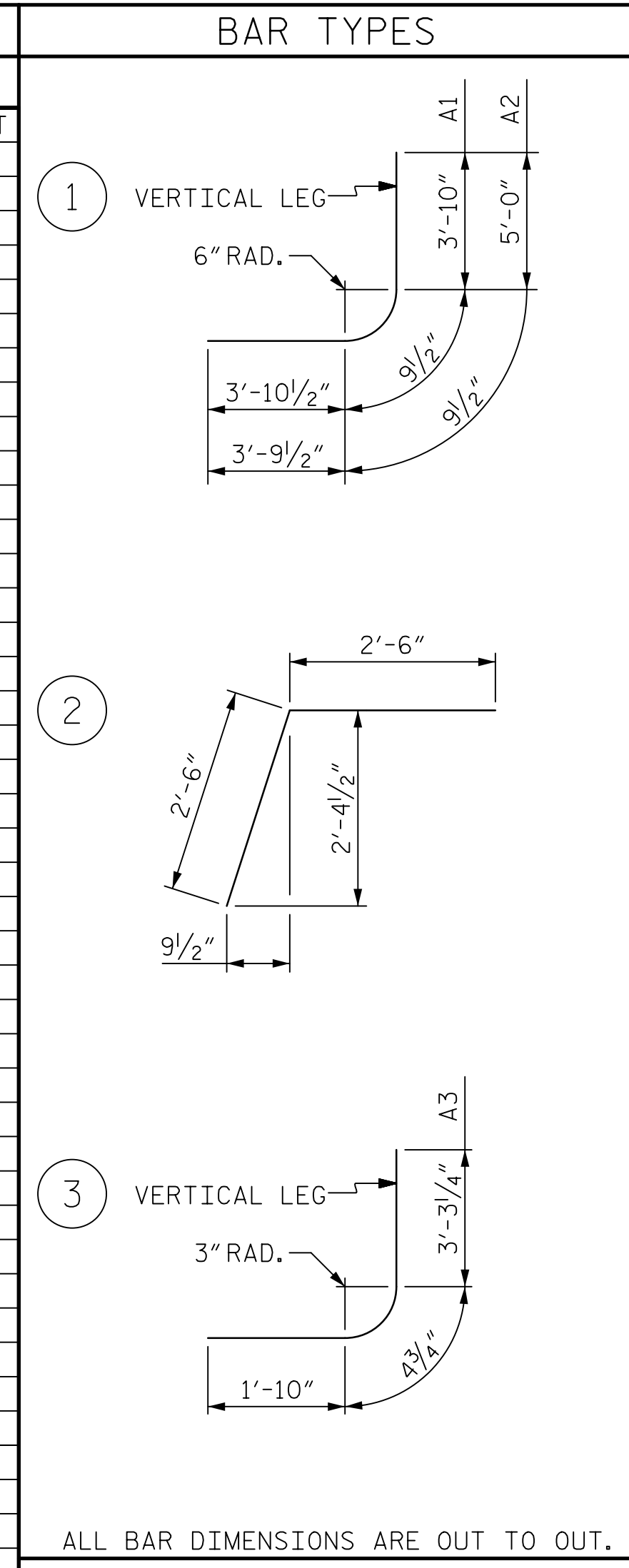


BILL OF MATERIAL - LEFT EXTENSION											
PHASE I						PHASE II					
BAR	NO.	SIZE	TYPE	LENGTH	WEIGHT	BAR	NO.	SIZE	TYPE	LENGTH	WEIGHT
A200	220	#5	STR	20'-1"	4608	A100	219	#5	STR	23'-8"	5406
A201	1	#5	STR	17'-10"	19	A101	1	#5	STR	20'-10"	22
A202	1	#5	STR	14'-10"	15	A102	1	#5	STR	17'-10"	19
A203	1	#5	STR	11'-9"	12	A103	1	#5	STR	14'-10"	15
A204	1	#5	STR	8'-9"	9	A104	1	#5	STR	11'-9"	12
A205	1	#5	STR	5'-8"	6	A105	1	#5	STR	8'-9"	9
A206	1	#5	STR	2'-8"	3	A106	1	#5	STR	5'-8"	6
A207	1	#5	STR	17'-4"	18	A107	1	#5	STR	2'-8"	3
A208	1	#5	STR	14'-7"	15	A108	1	#5	STR	22'-10"	24
A209	1	#5	STR	11'-10"	12	A109	1	#5	STR	20'-1"	21
A210	1	#5	STR	9'-1"	9	A110	1	#5	STR	17'-4"	18
A211	1	#5	STR	6'-4"	7	A111	1	#5	STR	14'-6"	15
A225	2	#5	STR	11'-11"	25	A112	1	#5	STR	11'-10"	12
A226	1	#5	STR	17'-5"	18	A113	1	#5	STR	9'-1"	9
						A114	1	#5	STR	6'-4"	7
A400	220	#6	STR	19'-10"	6554	A115	1	#5	STR	3'-7"	4
A401	1	#6	STR	17'-10"	27	A125	2	#5	STR	15'-0"	31
A402	1	#6	STR	14'-10"	22	A126	1	#5	STR	20'-6"	21
A403	1	#6	STR	11'-9"	18						
A404	1	#6	STR	8'-9"	13	A250	228	#5	STR	6'-7"	1566
A405	1	#6	STR	5'-8"	9	A251	1	#5	STR	3'-9"	4
A406	1	#6	STR	2'-8"	4	A252	1	#5	STR	4'-5"	5
A407	1	#6	STR	17'-1"	26						
A408	1	#6	STR	14'-4"	22	A300	219	#6	STR	23'-8"	7785
A409	1	#6	STR	11'-7"	17	A301	1	#6	STR	20'-10"	31
A410	1	#6	STR	8'-10"	13	A302	1	#6	STR	17'-10"	27
A411	1	#6	STR	6'-1"	9	A303	1	#6	STR	14'-10"	22
A425	2	#6	STR	11'-2"	34	A304	1	#6	STR	11'-9"	18
A426	1	#6	STR	16'-8"	25	A305	1	#6	STR	8'-9"	13
						A306	1	#6	STR	5'-8"	9
A1	451	#6	1	8'-6"	5758	A307	1	#6	STR	2'-8"	4
A2	451	#7	1	9'-7"	8834	A308	1	#6	STR	22'-10"	34
A3	912	#4	3	5'-6"	3351	A309	1	#6	STR	20'-1"	30
						A310	1	#6	STR	17'-4"	26
B1	451	#5	STR	10'-8"	5018	A311	1	#6	STR	14'-6"	22
B2	226	#4	STR	7'-4"	1107	A312	1	#6	STR	11'-10"	18
B3	912	#4	STR	10'-8"	6498	A313	1	#6	STR	9'-1"	14
						A314	1	#6	STR	6'-4"	10
C1	441	#4	STR	34'-11"	10286	A315	1	#6	STR	3'-7"	5
						A325	2	#6	STR	15'-0"	45
D1	17	#6	STR	2'-6"	64	A326	1	#6	STR	20'-6"	31
L1	24	#5	2	5'-0"	125	A450	228	#6	STR	6'-7"	2254
						A451	1	#6	STR	3'-9"	6
S1	6	#6	STR	21'-9"	196	A452	1	#6	STR	4'-5"	7
S3	3	#8	STR	24'-11"	200						
						A1	459	#6	1	8'-6"	5860
						A2	457	#7	1	9'-7"	8952
						B1	457	#5	STR	10'-8"	5084
						B2	229	#4	STR	7'-4"	1122
						C1	357	#4	STR	34'-11"	8327
						D1	25	#6	STR	2'-6"	94
						G1	4	#5	STR	24'-11"	104
						L1	2	#5	2	5'-0"	10
						S2	6	#6	STR	7'-0"	63
						S4	6	#6	STR	25'-2"	227
						S5	3	#8	STR	24'-11"	200
REINFORCING STEEL					53,006 LBS.						
REINFORCING STEEL					47,683 LBS.						



DETAIL "F"

DETAIL "G"

BAR	SIZE	SPLICE
A200 A207-A211 A225-A226	#5	3'-0"
A400 A407-A411 A425-A426	#5	2'-9"
B1	#5	2'-4"
B3	#4	1'-10"
C1	#4	2'-5"
S1	#6	3'-7"

DRAWN BY : J.S. HOBSON DATE : 04/09/19  
 CHECKED BY : J.A. LEE DATE : 04/18/19  
 DESIGN ENGINEER OF RECORD : J.S. HOBSON DATE : 04/26/19

**Mead & Hunt**  
 111 E. Hargett Street  
 Suite 300  
 Raleigh, NC 27601  
 919-714-8670  
 meadhunt.com  
 NC License No. F-1235

SEAL  
 043177  
 ENGINEER  
 JACK HOBSON  
 4/16/2020

DOCUMENT NOT CONSIDERED  
 FINAL UNLESS ALL  
 SIGNATURES COMPLETED

PROJECT NO. R-4707  
 GUILFORD COUNTY  
 STATION: 56+34.85 -L-  
 SHEET 7 OF 16

REVISIONS						SHEET NO.
NO.	BY:	DATE:	NO.	BY:	DATE:	C1-15
1			3			TOTAL SHEETS
2			4			24

STATE OF NORTH CAROLINA  
 DEPARTMENT OF TRANSPORTATION  
 RALEIGH  
 TRIPLE 7 FT. x 8 FT.  
 REINFORCED CONCRETE  
 BOX CULVERT  
 (LEFT EXTENSION)