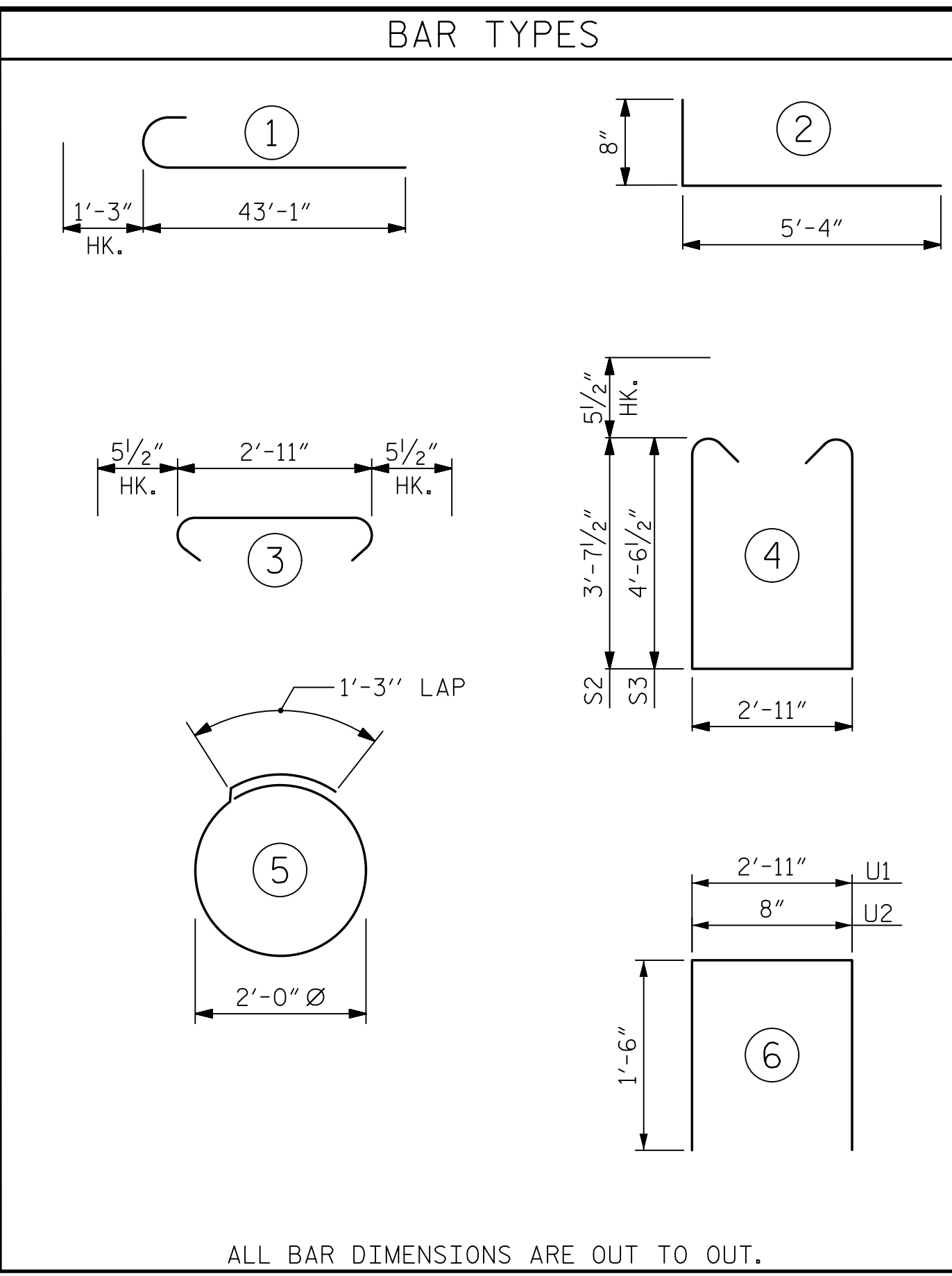
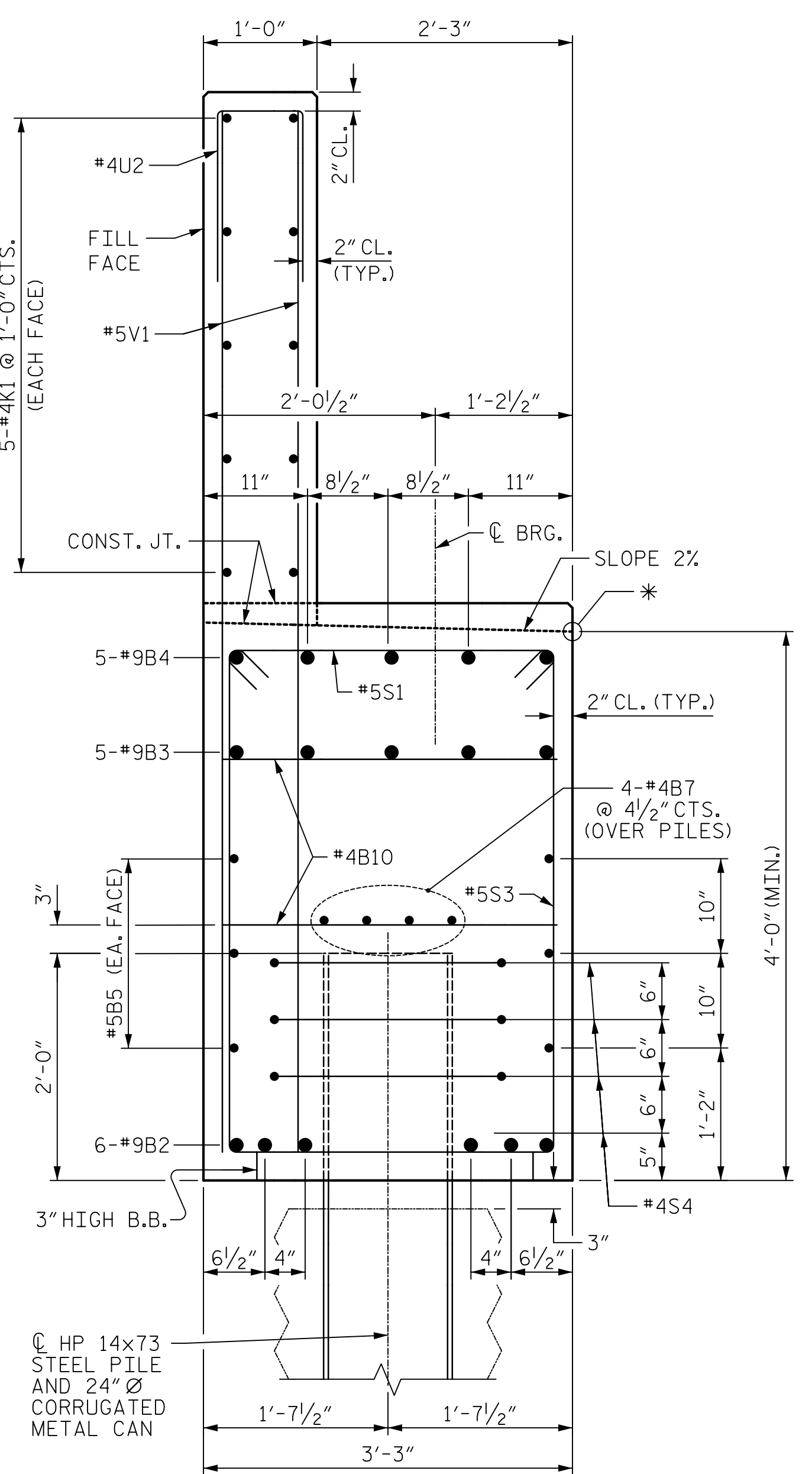
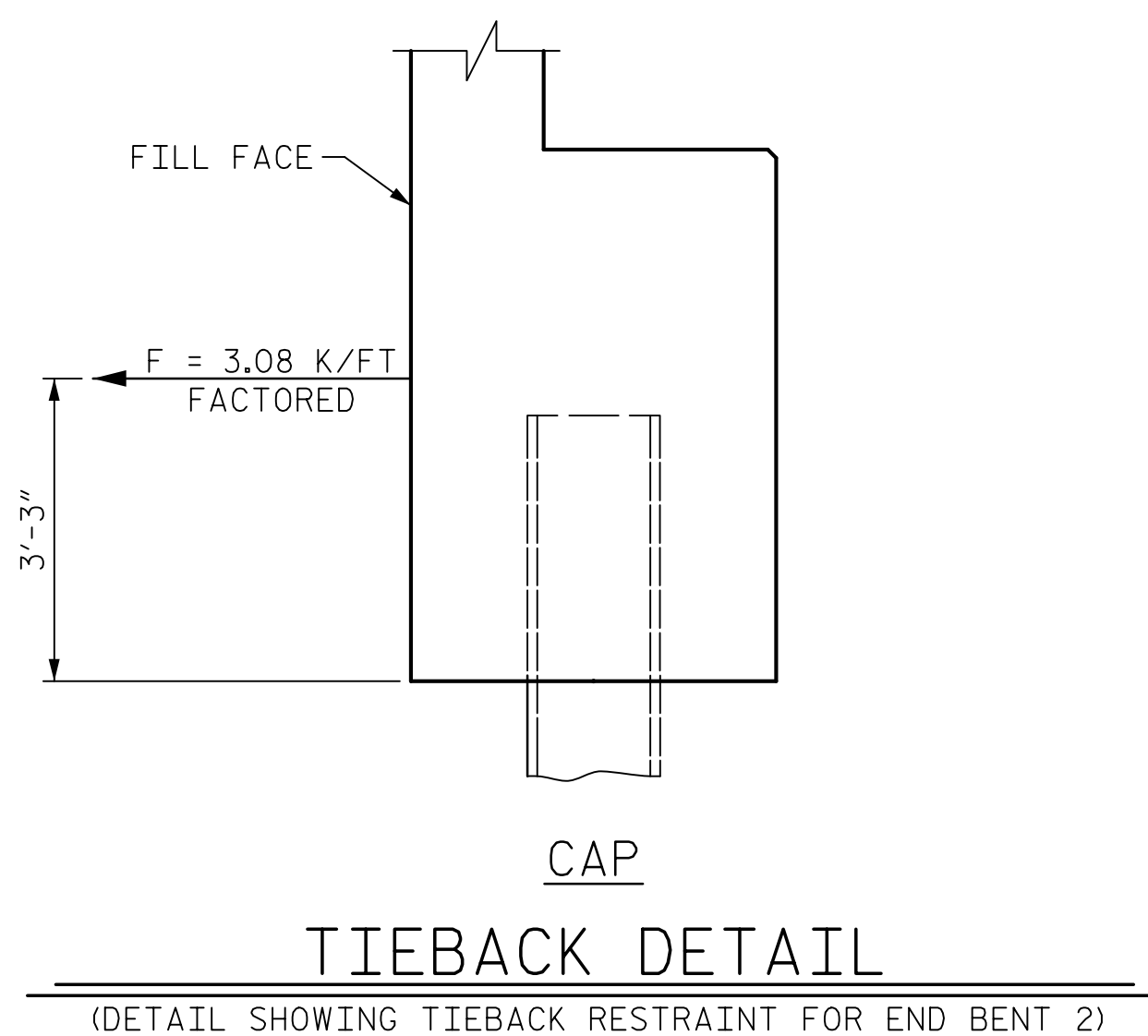
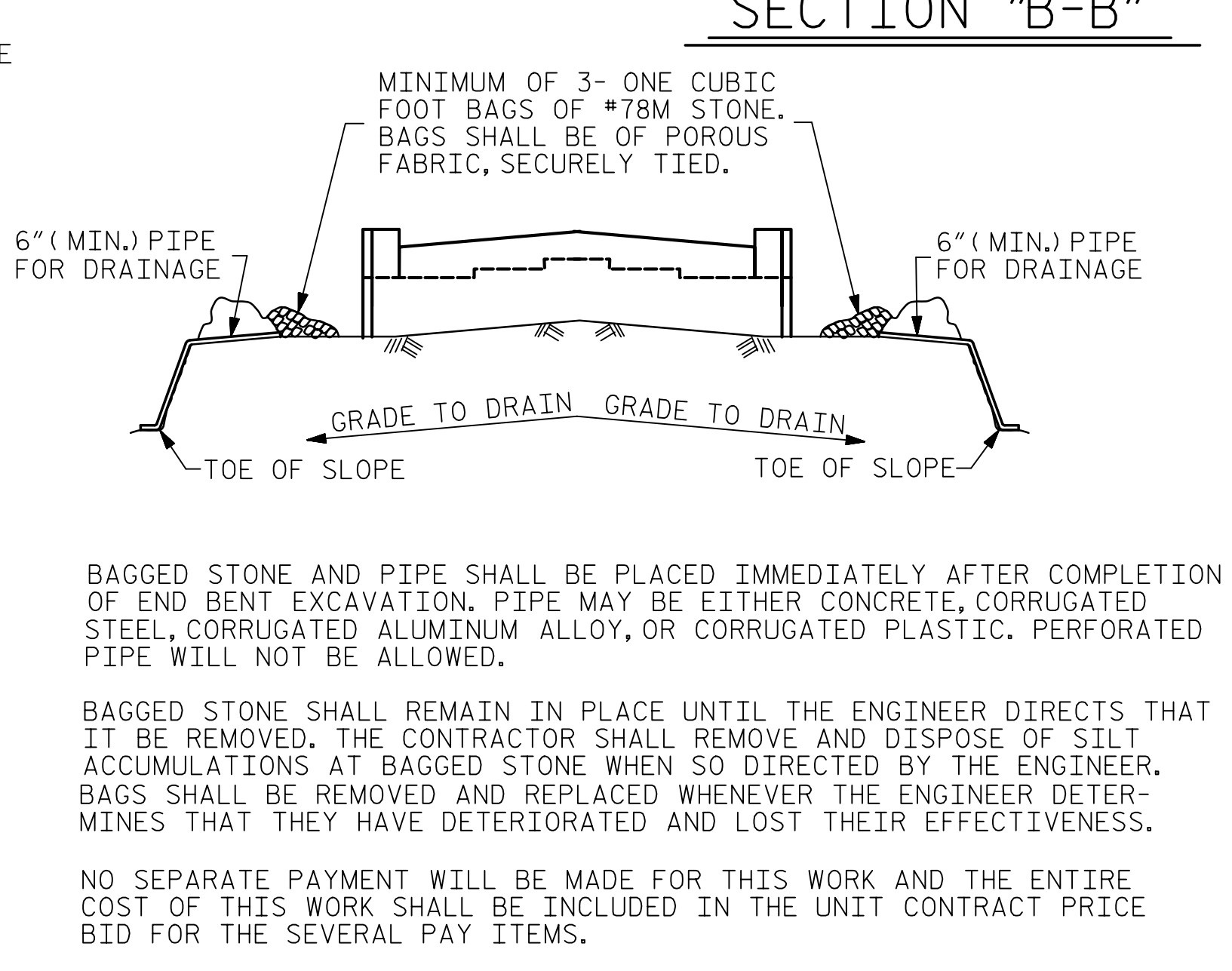
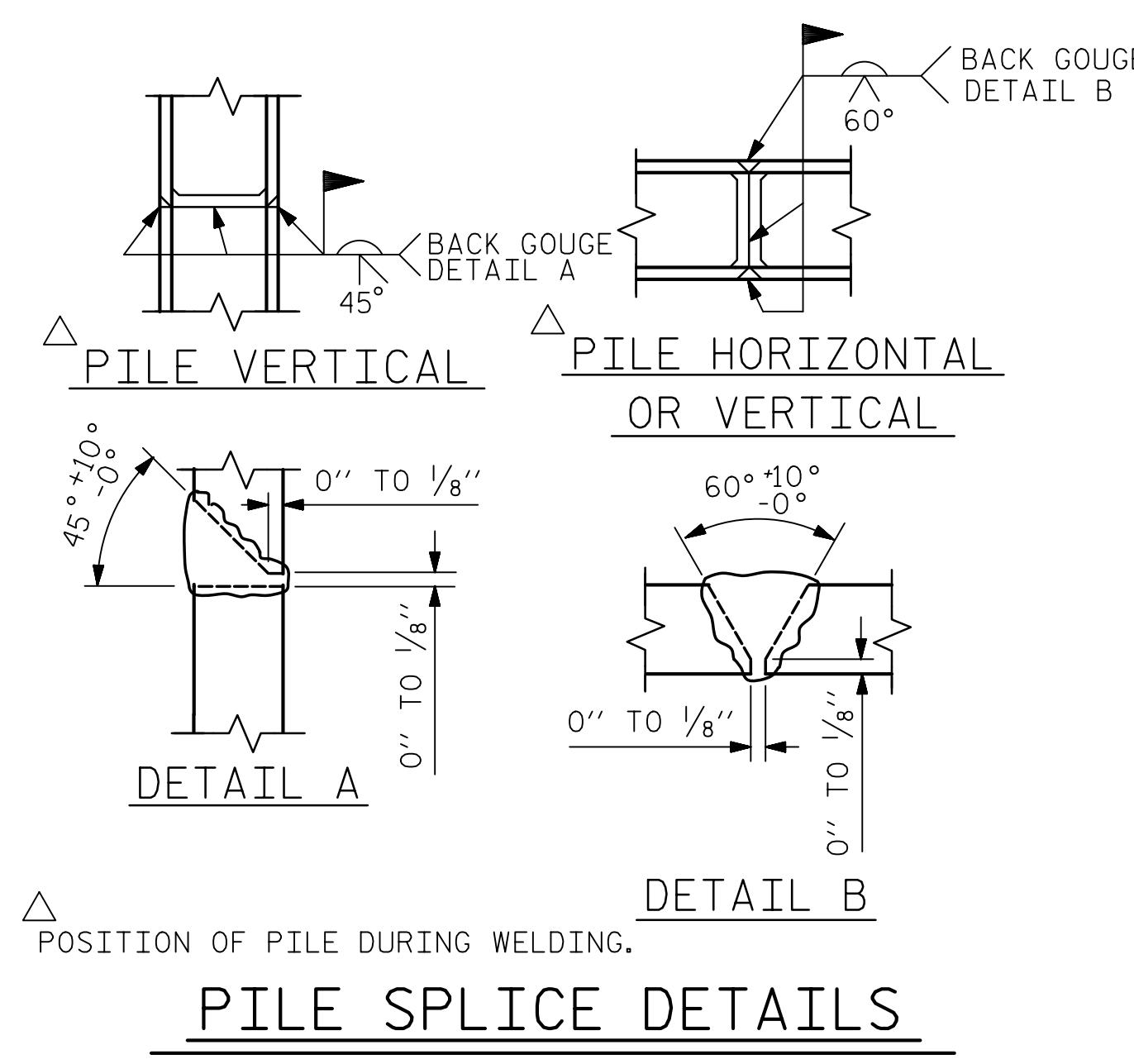


*ELEVATIONS FOR TOP OF CAP ARE SHOWN TO THIS POINT.



ALL BAR DIMENSIONS ARE OUT TO OUT.

BILL OF MATERIAL					
END BENT #2					
BAR NO.	NO.	SIZE	TYPE	LENGTH	WEIGHT
B1	22	#9		44'-4"	3316
B2	6	#9	STR	54'-1"	1103
B3	5	#9	STR	51'-3"	871
B4	5	#9	STR	35'-7"	605
B5	12	#5	STR	45'-0"	563
B6	6	#5	STR	43'-2"	270
B7	24	#4	STR	23'-5"	375
B8	30	#4	STR	11'-6"	230
B9	5	#4	STR	12'-3"	41
B10	41	#4	STR	2'-11"	80
H1	56	#4	2	6'-0"	224
K1	50	#4	STR	27'-4"	913
K2	8	#4	STR	2'-7"	14
S1	242	#5	3	3'-10"	968
S2	173	#5	4	11'-1"	2000
S3	69	#5	4	12'-11"	930
S4	72	#4	5	7'-7"	365
U1	57	#4	6	5'-11"	225
U2	122	#4	6	3'-8"	299
V1	244	#5	STR	8'-0"	2036
V2	18	#4	STR	9'-8"	116
V3	18	#4	STR	9'-5"	113
REINFORCING STEEL					15,657 LBS.
CLASS A CONCRETE BREAKDOWN					
POUR #1 CAP & LOWER PART OF WINGS					71.5 C.Y.
POUR #2 BACKWALL & UPPER PART OF WINGS					23.8 C.Y.
TOTAL CLASS A CONCRETE					95.3 C.Y.
HP 14 X 73 STEEL PILES NO. 18					LIN. FT.= 1,296
STEEL PILE POINTS					NO: 18
PILE DRIVING EQUIPMENT SETUP FOR HP 14 X 73 STEEL PILES					NO: 18



Mead & Hunt
 111 E. Hargett Street
 Suite 300
 Raleigh, NC 27601
 919-714-8670
 meadhunt.com
 NC License No. F-1235

SEAL 043177
 JACK S. HOBSON
 ENGINEER
 4/16/2020

PROJECT NO. R-4707
GUILFORD COUNTY
 STATION: 41+39.51 -Y-
 SHEET 4 OF 4

STATE OF NORTH CAROLINA
 DEPARTMENT OF TRANSPORTATION
 RALEIGH
 SUBSTRUCTURE
 END BENT 2

DRAWN BY: J.S. HOBSON DATE: 02/04/19
 CHECKED BY: A.J. FORFA DATE: 02/18/19
 DESIGN ENGINEER OF RECORD: J.S. HOBSON DATE: 02/07/20

TEMPORARY DRAINAGE AT END BENT

DOCUMENT NOT CONSIDERED FINAL UNLESS ALL SIGNATURES COMPLETED

REVISIONS					
NO.	BY:	DATE:	NO.	BY:	DATE:
1			3		
2			4		

SHEET NO. S-33
 TOTAL SHEETS 39