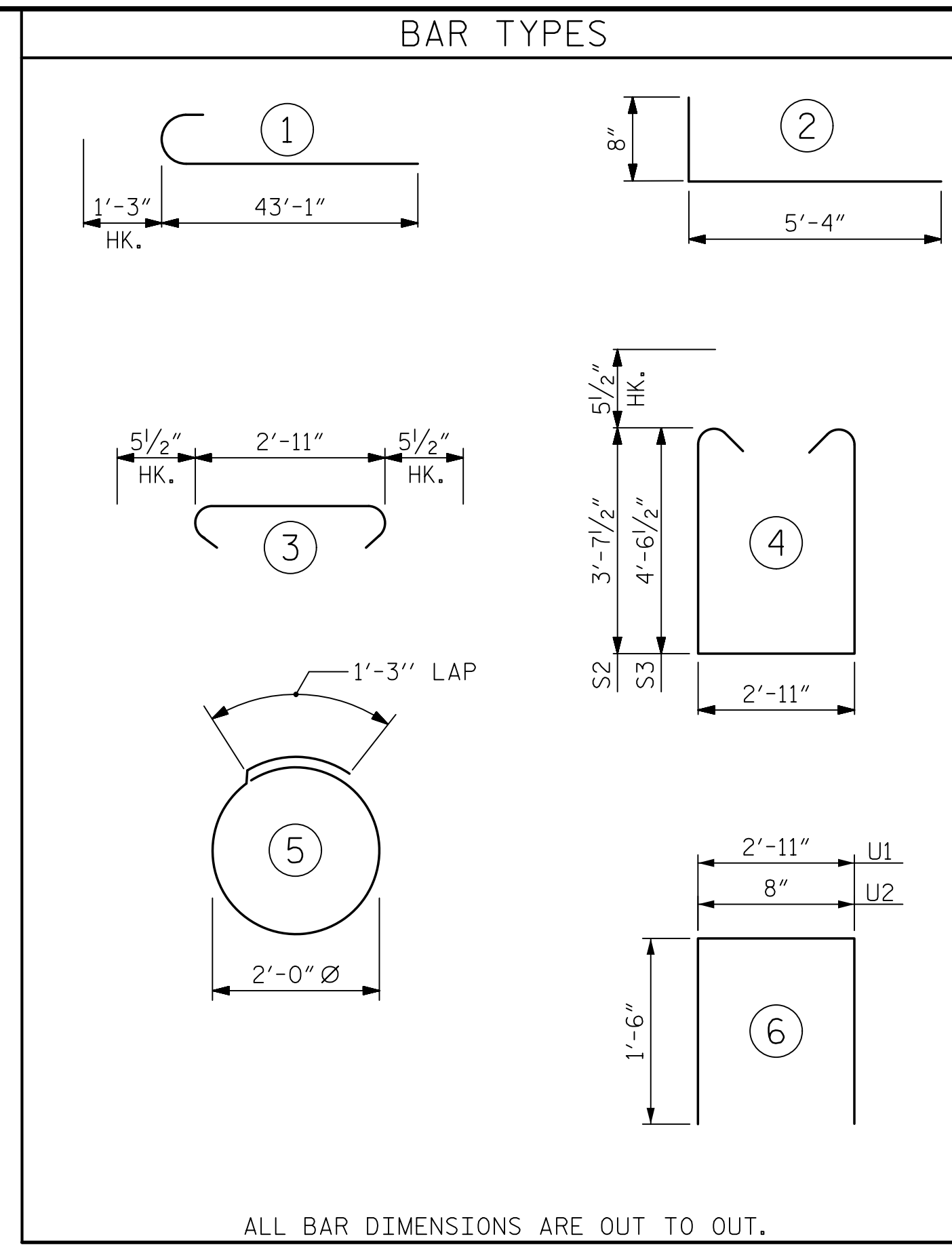
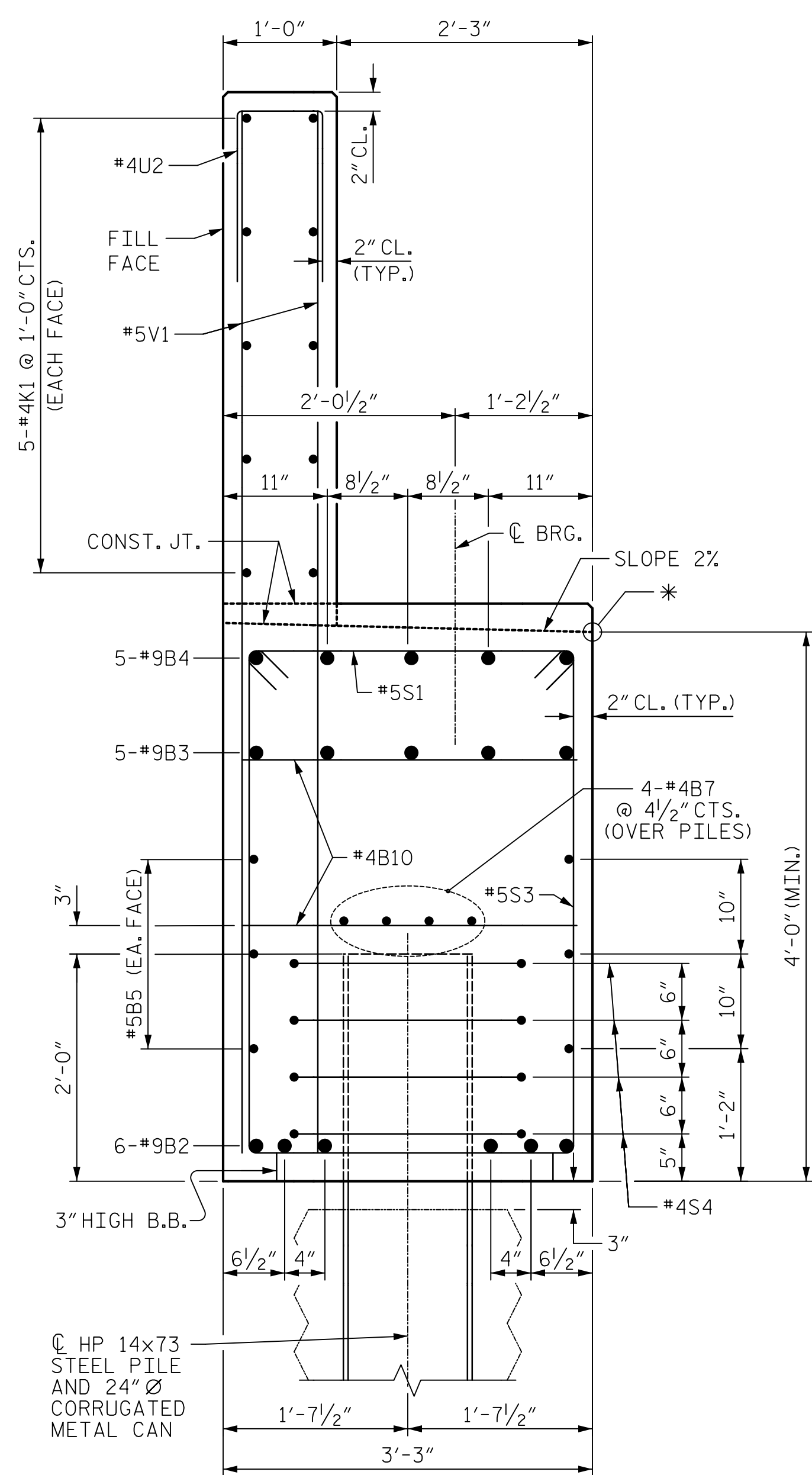
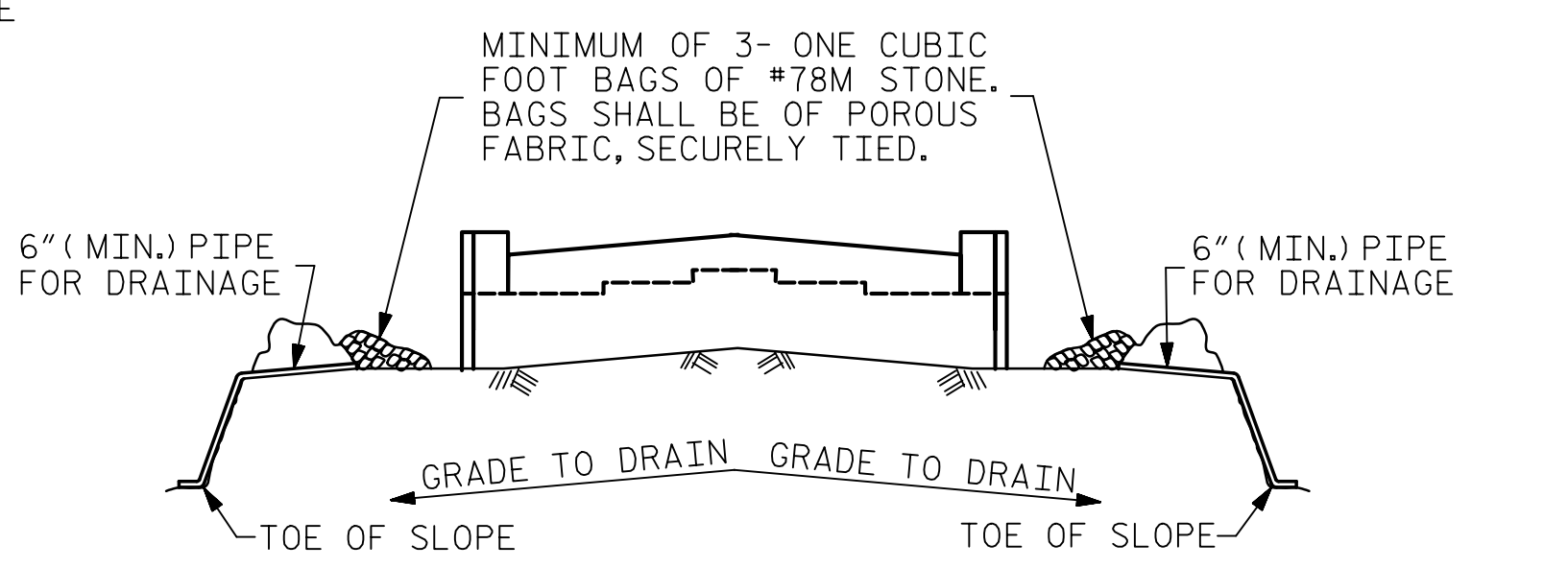
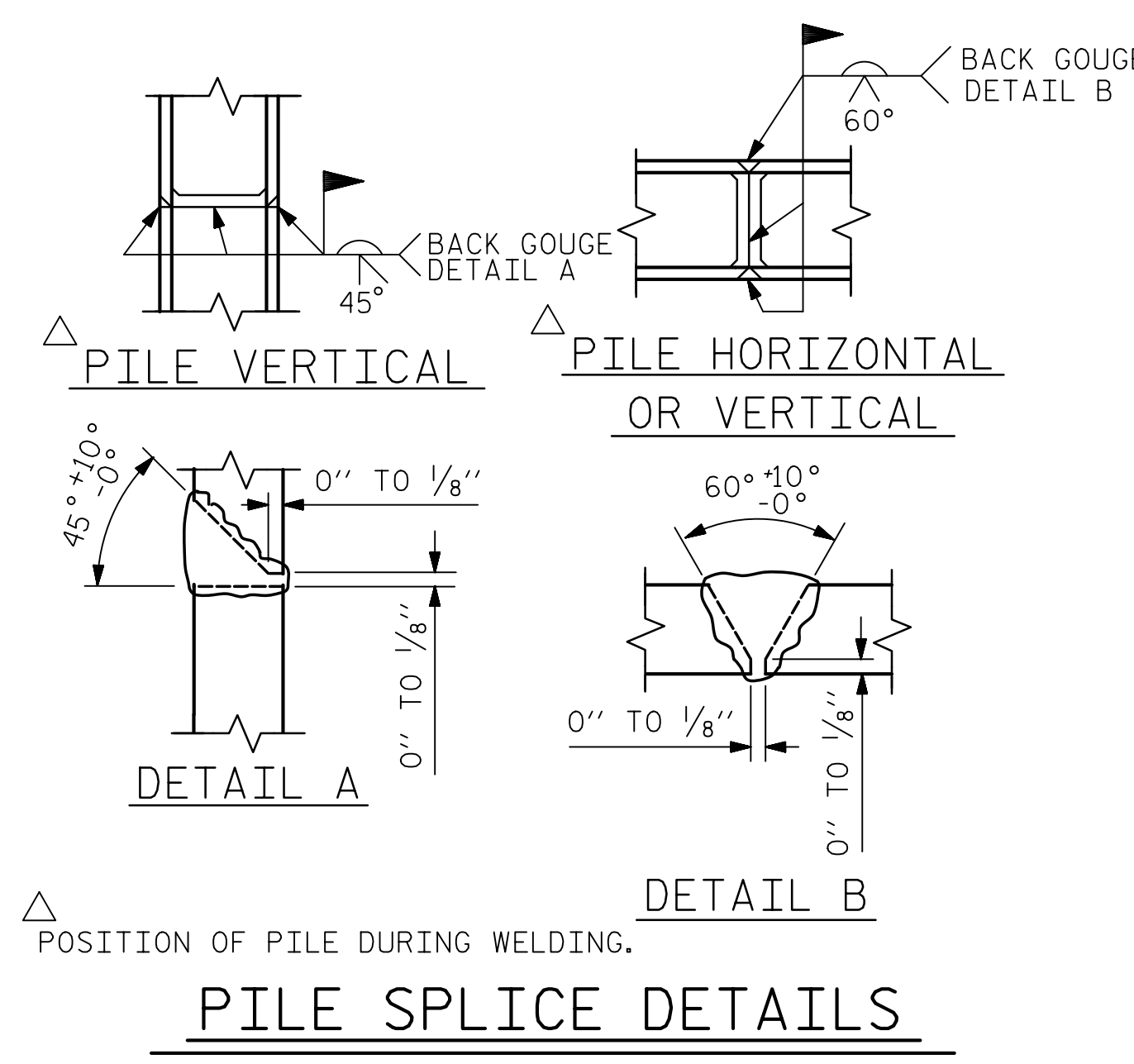


*ELEVATIONS FOR TOP OF CAP ARE SHOWN TO THIS POINT.



ALL BAR DIMENSIONS ARE OUT TO OUT.

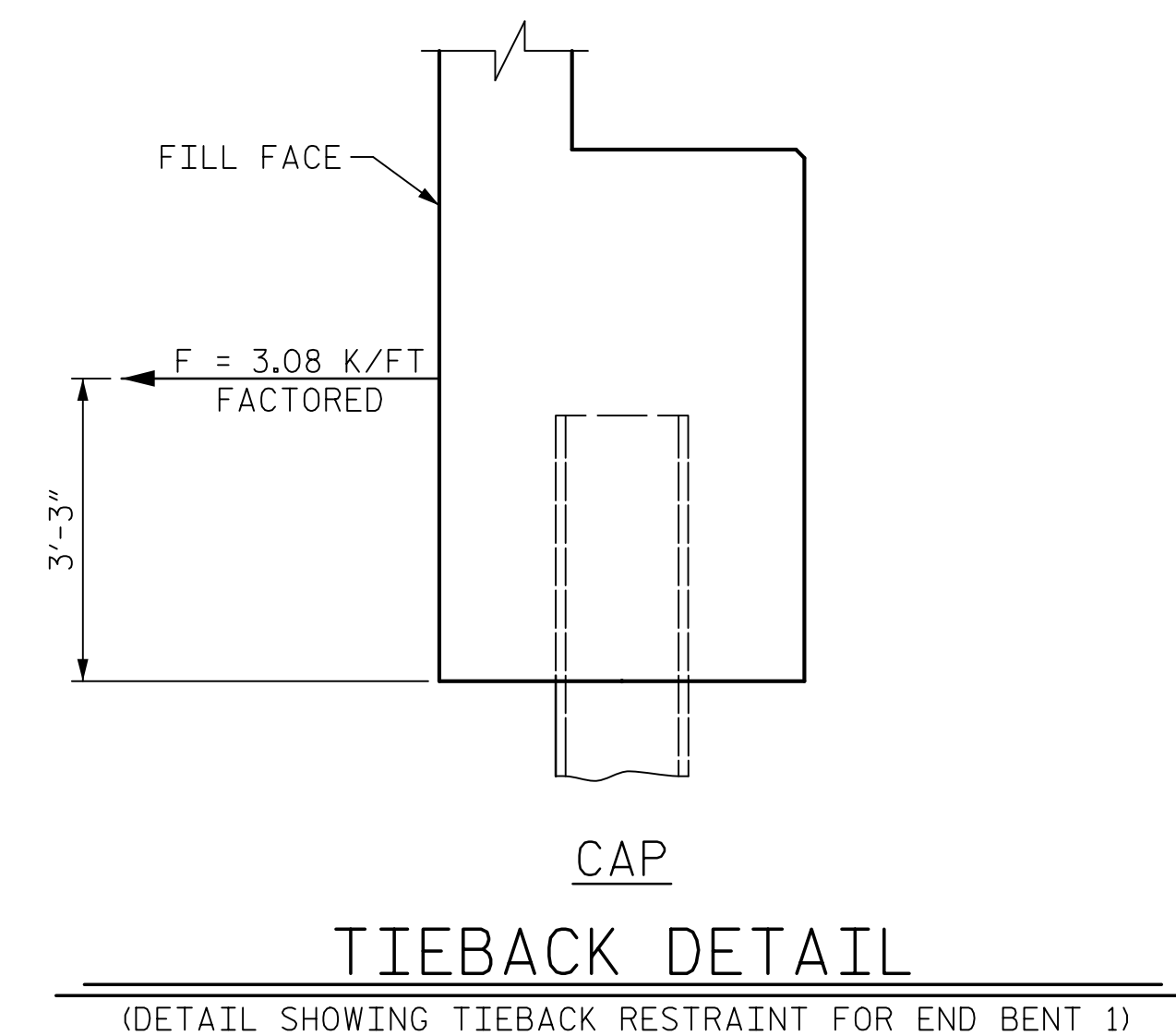
BILL OF MATERIAL					
END BENT #1					
BAR NO.	NO.	SIZE	TYPE	LENGTH	WEIGHT
B1	22	#9		44'-4"	3316
B2	6	#9	STR	54'-1"	1103
B3	5	#9	STR	51'-3"	871
B4	5	#9	STR	35'-7"	605
B5	12	#5	STR	45'-0"	563
B6	6	#5	STR	43'-2"	270
B7	24	#4	STR	23'-5"	375
B8	30	#4	STR	11'-6"	230
B9	5	#4	STR	12'-3"	41
B10	41	#4	STR	2'-11"	80
H1	56	#4	2	6'-0"	224
K1	50	#4	STR	27'-4"	913
K2	8	#4	STR	2'-7"	14
S1	242	#5	3	3'-10"	968
S2	173	#5	4	11'-1"	2000
S3	69	#5	4	12'-11"	930
S4	72	#4	5	7'-7"	365
U1	57	#4	6	5'-11"	225
U2	122	#4	6	3'-8"	299
V1	244	#5	STR	8'-0"	2036
V2	18	#4	STR	9'-8"	116
V3	18	#4	STR	9'-5"	113
REINFORCING STEEL					15,657 LBS.
CLASS A CONCRETE BREAKDOWN					
POUR #1 CAP & LOWER PART OF WINGS					71.5 C.Y.
POUR #2 BACKWALL & UPPER PART OF WINGS					23.8 C.Y.
TOTAL CLASS A CONCRETE					95.3 C.Y.
HP 14 X 73 STEEL PILES NO. 18					LIN. FT.= 1,176
STEEL PILE POINTS					NO: 18
PILE DRIVING EQUIPMENT SETUP FOR HP 14 X 73 STEEL PILES					NO: 18



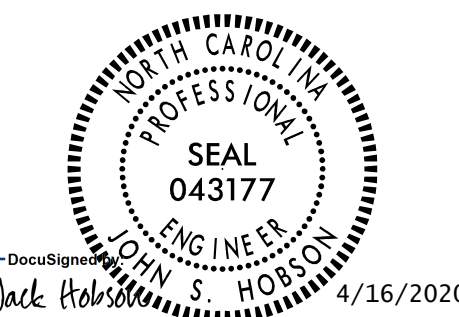
BAGGED STONE AND PIPE SHALL BE PLACED IMMEDIATELY AFTER COMPLETION OF END BENT EXCAVATION. PIPE MAY BE EITHER CONCRETE, CORRUGATED STEEL, CORRUGATED ALUMINUM ALLOY, OR CORRUGATED PLASTIC. PERFORATED PIPE WILL NOT BE ALLOWED.

BAGGED STONE SHALL REMAIN IN PLACE UNTIL THE ENGINEER DIRECTS THAT IT BE REMOVED. THE CONTRACTOR SHALL REMOVE AND DISPOSE OF SILT ACCUMULATIONS AT BAGGED STONE WHEN SO DIRECTED BY THE ENGINEER. BAGS SHALL BE REMOVED AND REPLACED WHENEVER THE ENGINEER DETERMINES THAT THEY HAVE DETERIORATED AND LOST THEIR EFFECTIVENESS.

NO SEPARATE PAYMENT WILL BE MADE FOR THIS WORK AND THE ENTIRE COST OF THIS WORK SHALL BE INCLUDED IN THE UNIT CONTRACT PRICE BID FOR THE SEVERAL PAY ITEMS.



Mead & Hunt
 111 E. Hargett Street
 Suite 300
 Raleigh, NC 27601
 919-714-8670
 meadhunt.com
 NC License No. F-1235



PROJECT NO. R-4707
GUILFORD COUNTY
 STATION: 41+39.51 -Y-
 SHEET 4 OF 4

STATE OF NORTH CAROLINA
 DEPARTMENT OF TRANSPORTATION
 RALEIGH
 SUBSTRUCTURE
 END BENT 1

DRAWN BY: J.S. HOBSON DATE: 01/28/19
 CHECKED BY: A.J. FORFA DATE: 02/14/19
 DESIGN ENGINEER OF RECORD: J.S. HOBSON DATE: 02/07/20

TEMPORARY DRAINAGE AT END BENT

DOCUMENT NOT CONSIDERED FINAL UNLESS ALL SIGNATURES COMPLETED

REVISIONS					
NO.	BY:	DATE:	NO.	BY:	DATE:
1			3		
2			4		

SHEET NO. S-26
 TOTAL SHEETS 39