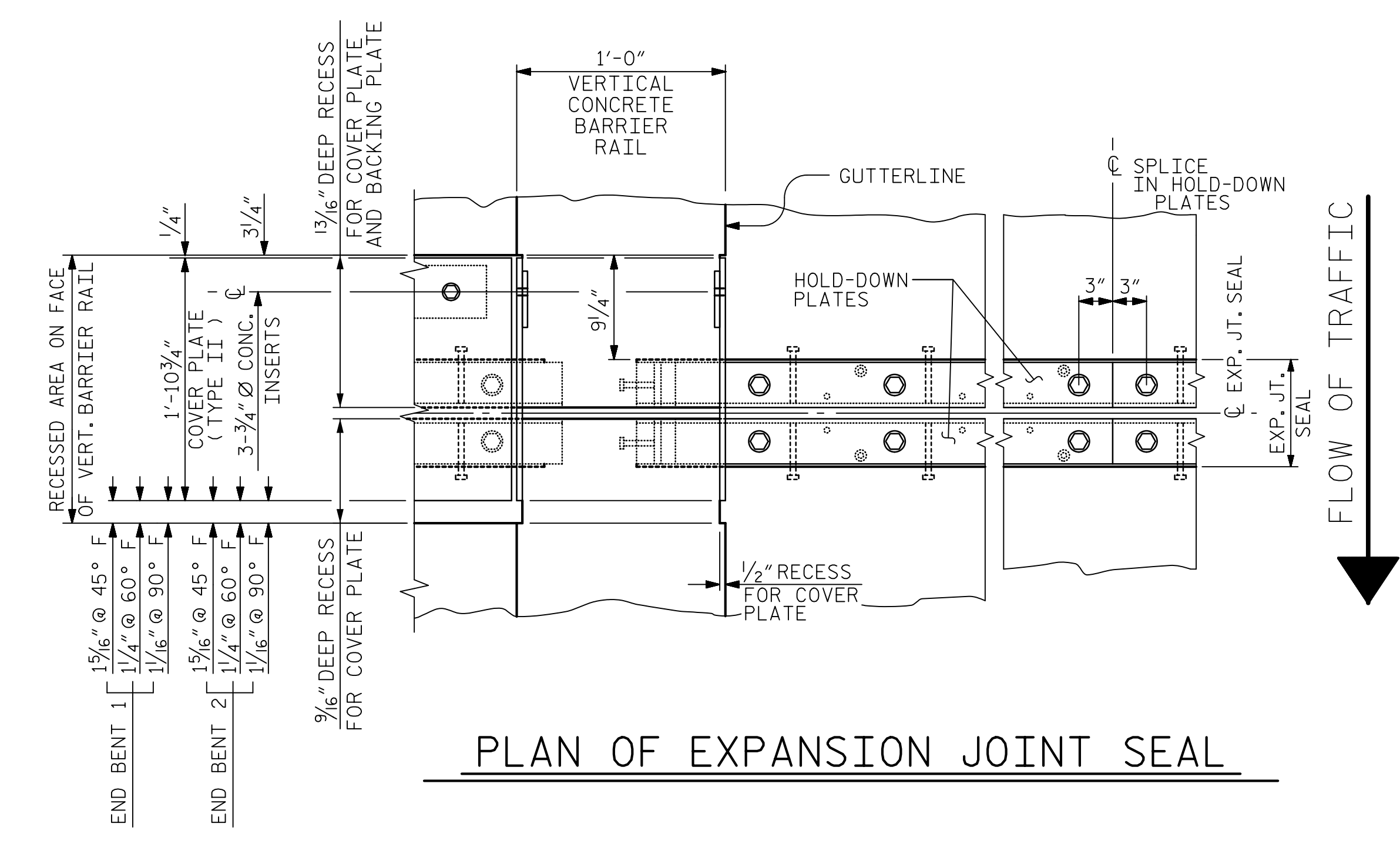
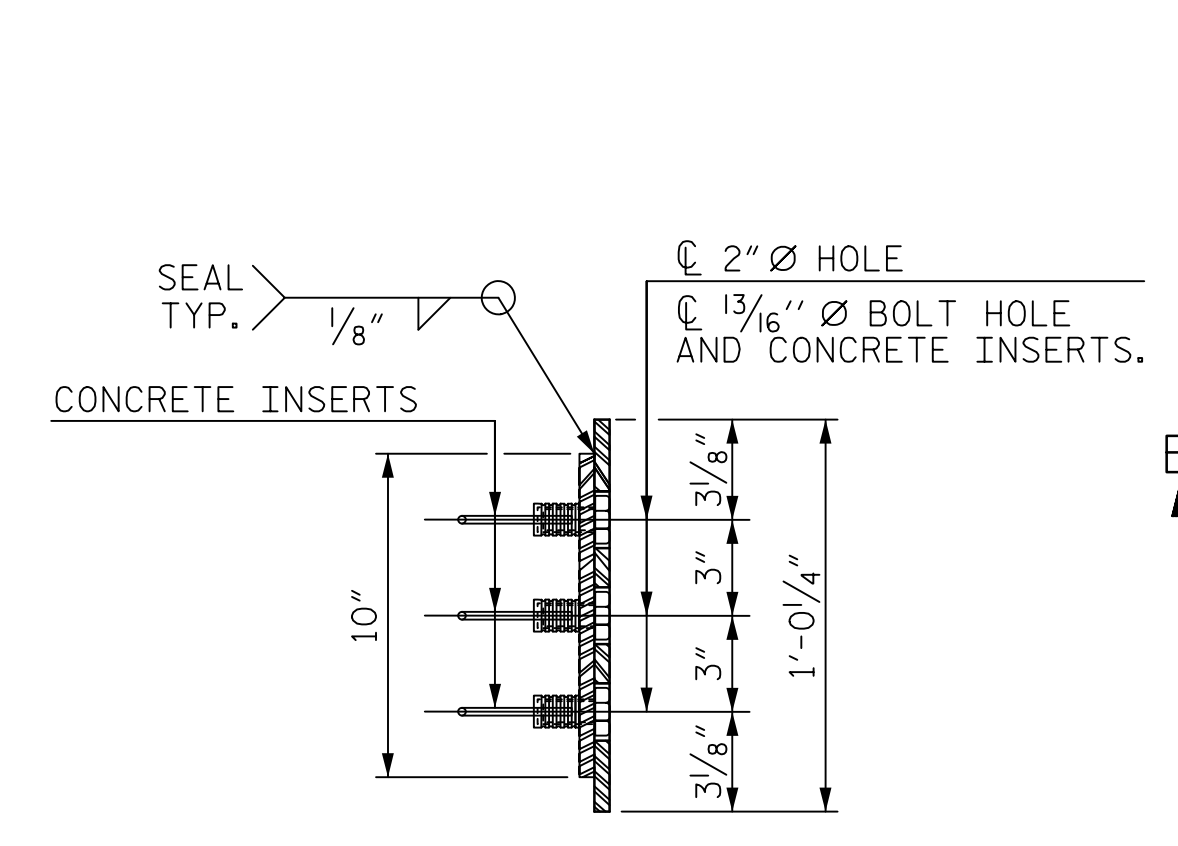


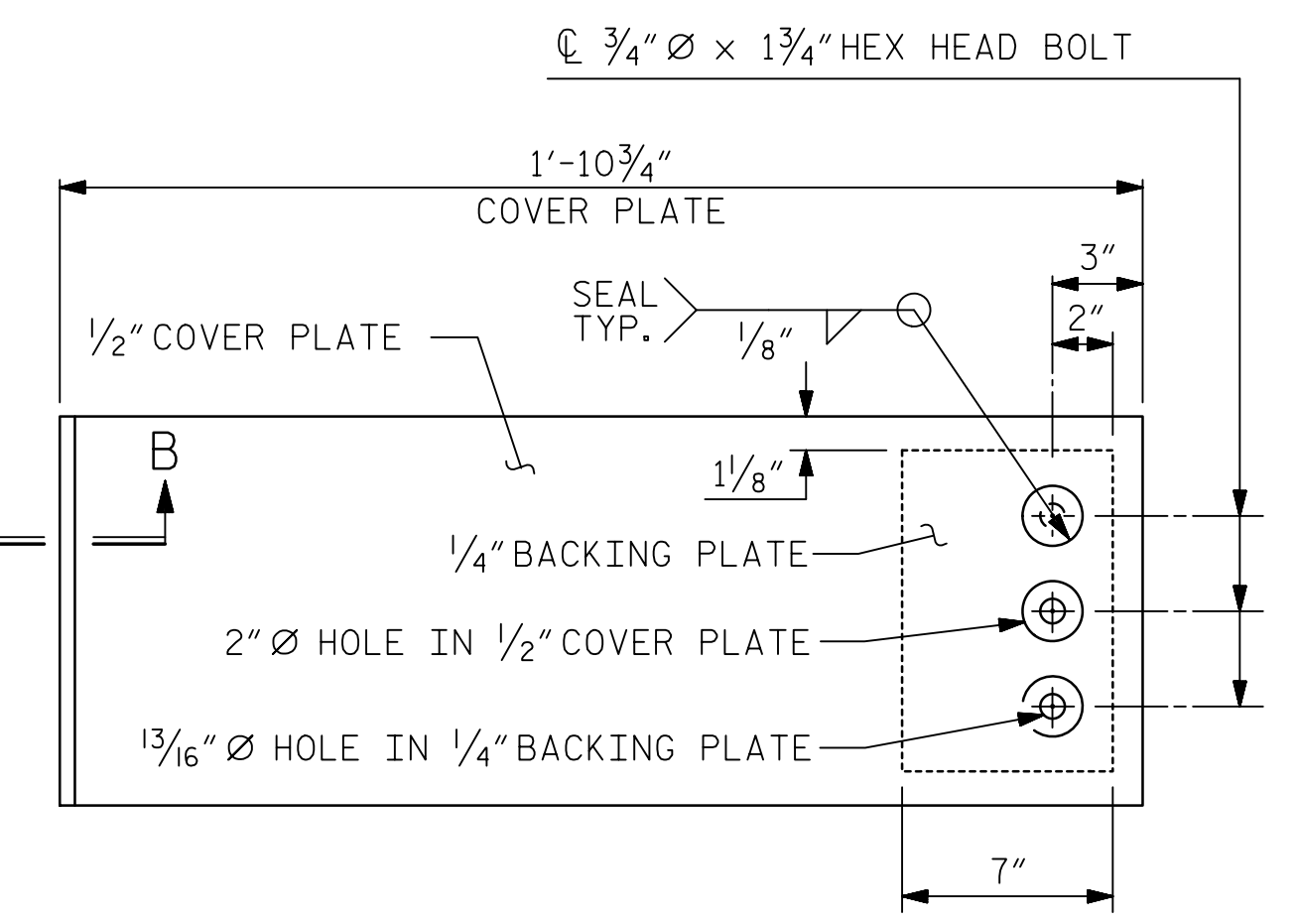
**SECTION THRU RAIL NORMAL TO JOINT**



**PLAN OF EXPANSION JOINT SEAL**

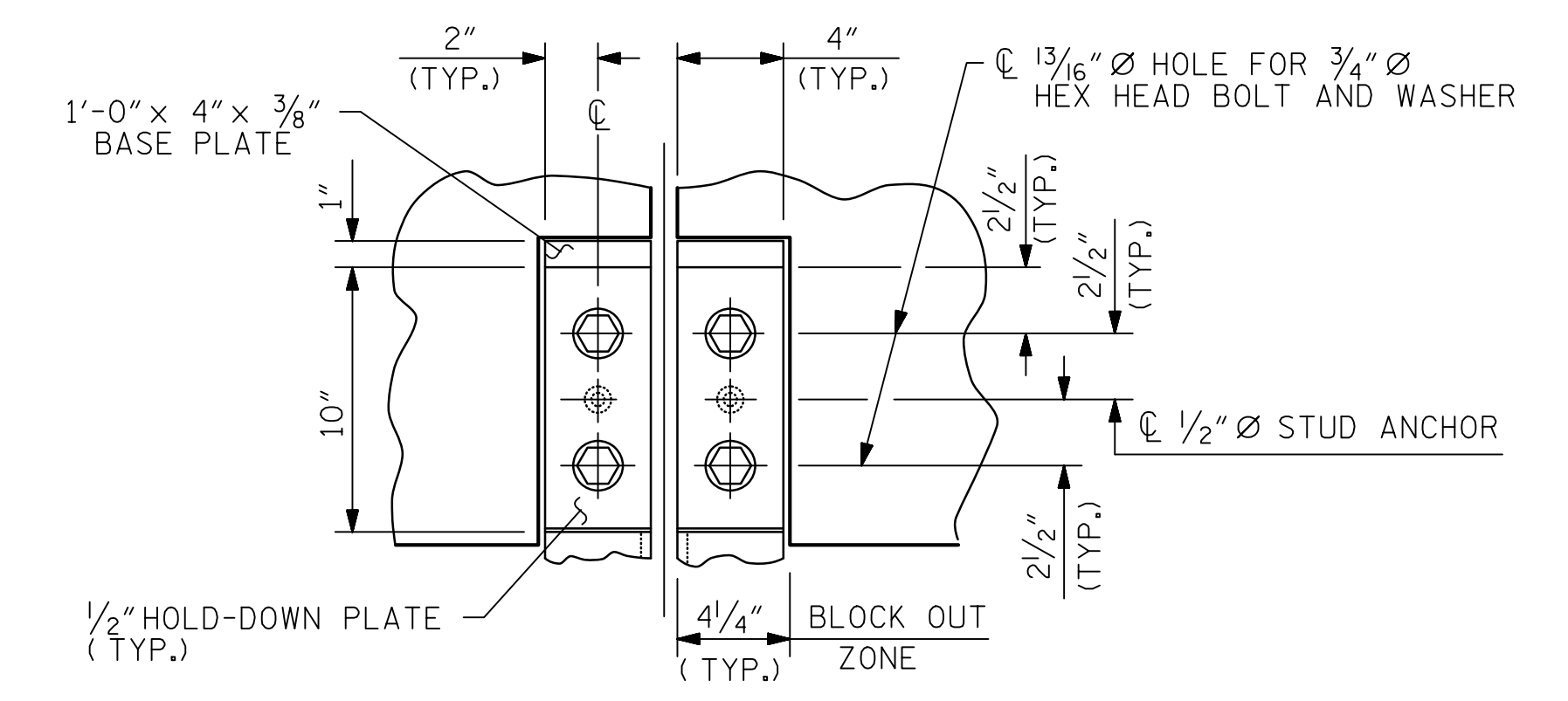


**END VIEW**

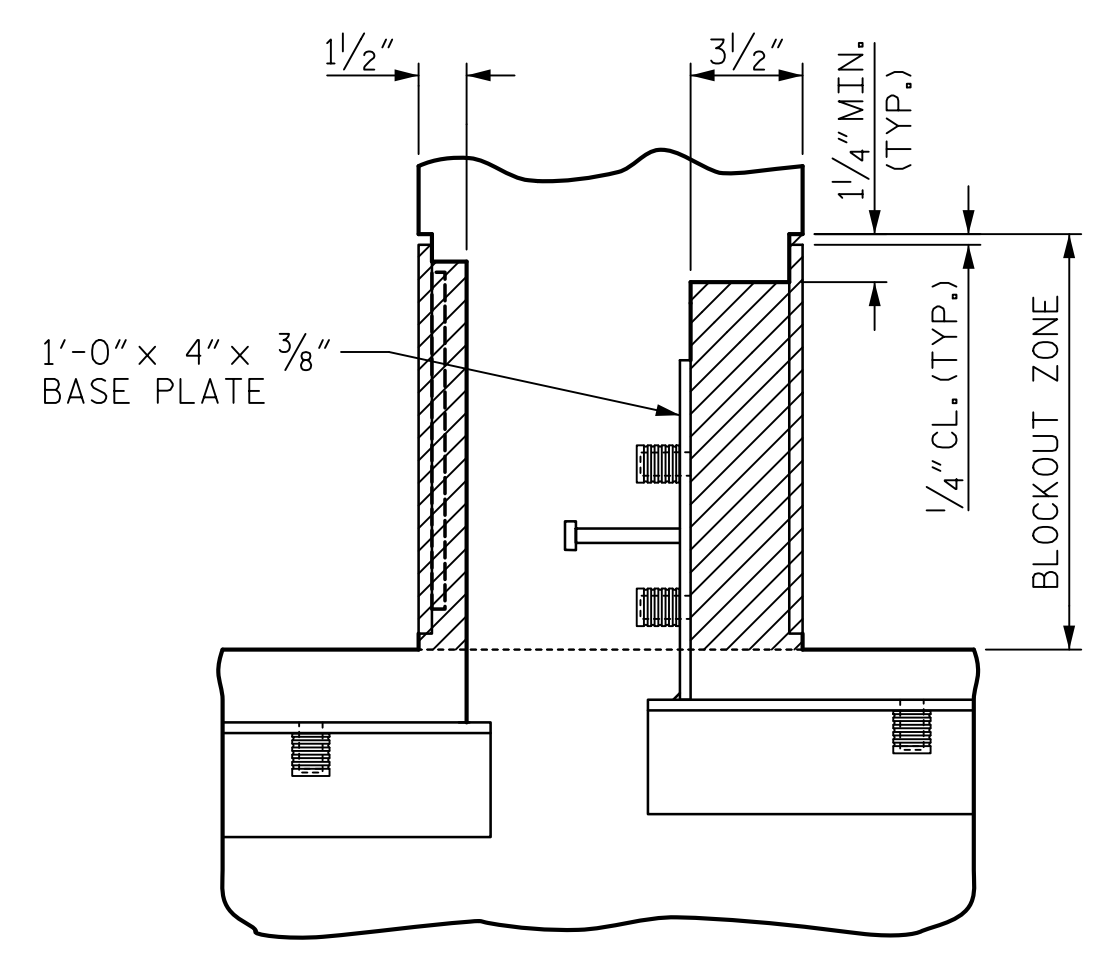


**TYPE II - ELEVATION VIEW**

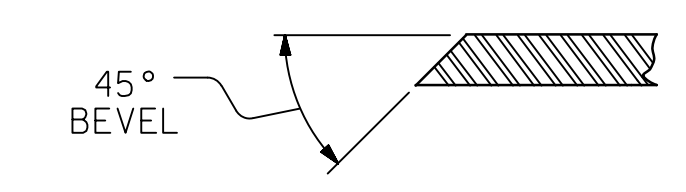
**COVER PLATE DETAILS**



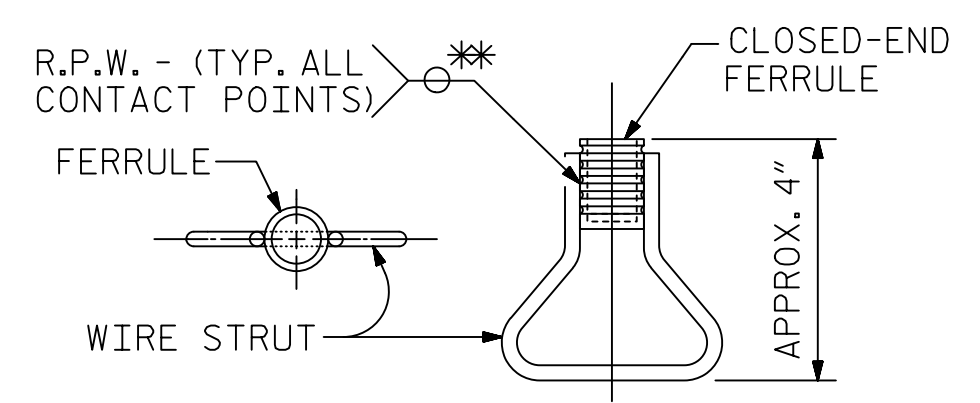
**SECTION C - C**



**BLOCK OUT DETAIL**  
SEE "SECTION C - C" FOR OTHER DETAILS.



**SECTION B - B**



**CONCRETE INSERT**

\*\*EACH WELDED ATTACHMENT OF WIRE TO FERRULE SHALL DEVELOP THE TENSILE STRENGTH OF THE WIRE.

**Mead & Hunt**  
111 E. Hargett Street  
Suite 300  
Raleigh, NC 27601  
919-714-8670  
meadhunt.com  
NC License No. F-1235



PROJECT NO. R-4707  
GUILFORD COUNTY  
STATION: 41+39.51 -Y-  
SHEET 3 OF 4

STATE OF NORTH CAROLINA  
DEPARTMENT OF TRANSPORTATION  
RALEIGH  
SUPERSTRUCTURE  
EXPANSION JOINT SEAL  
DETAILS FOR VERTICAL  
BARRIER RAIL

DRAWN BY: J.S. HOBSON DATE: 02/18/19  
CHECKED BY: J.A. LEE DATE: 02/22/19  
DESIGN ENGINEER OF RECORD: J.S. HOBSON DATE: 02/07/20

DOCUMENT NOT CONSIDERED  
FINAL UNLESS ALL  
SIGNATURES COMPLETED

REVISIONS						SHEET NO.
NO.	BY:	DATE:	NO.	BY:	DATE:	S-20
1			3			TOTAL SHEETS
2			4			39