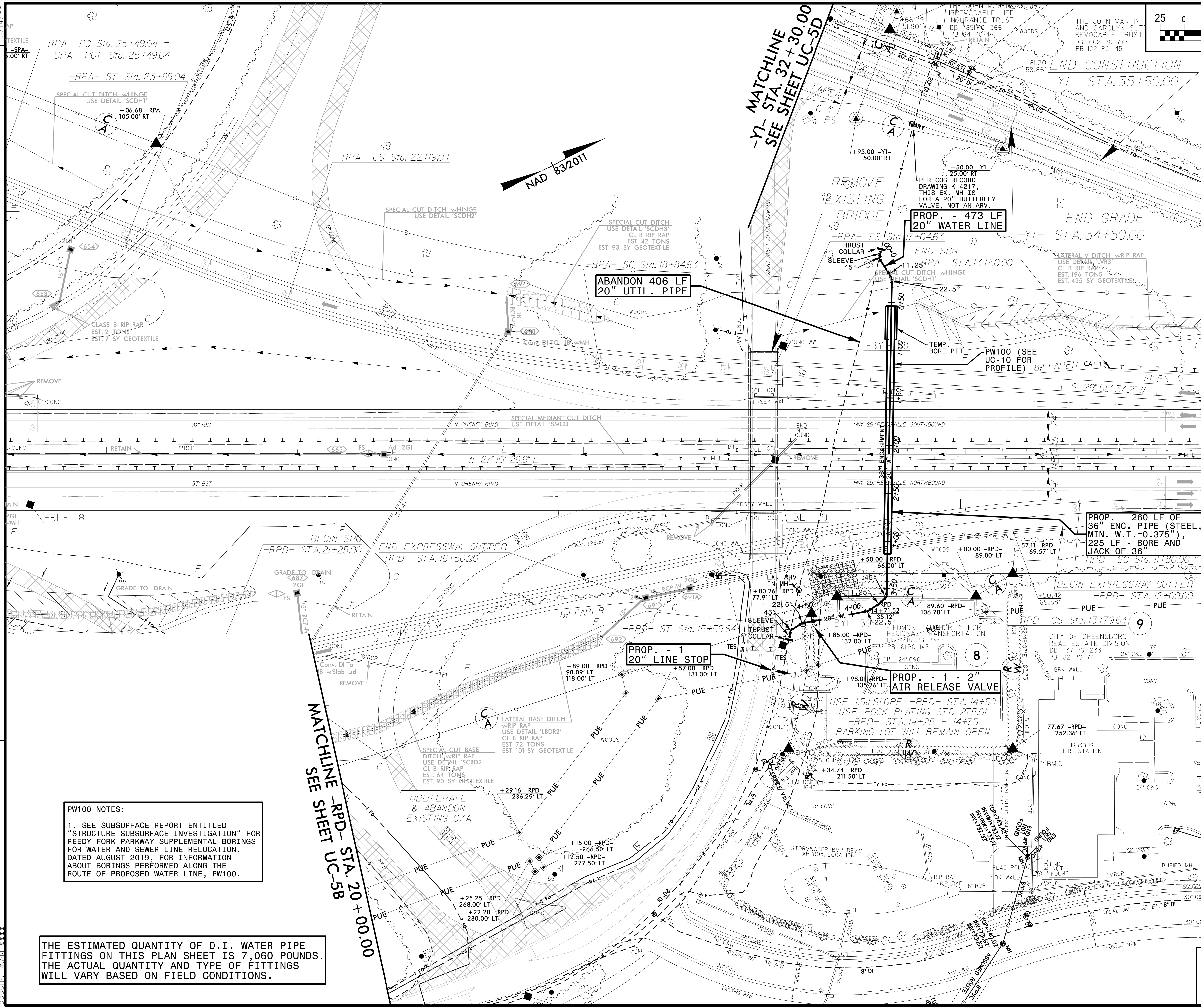


PROJECT REFERENCE NO.	R-4707	SHEET NO.	UC-5C
DESIGNED BY:	DMP		
DRAWN BY:	DMP		
CHECKED BY:	DMP		
APPROVED BY:	DMP		
REVISED:		NORTH CAROLINA DEPARTMENT OF TRANSPORTATION	3/26/2020
UTILITIES ENGINEERING SEC. PHONE: (919) 707-6690 FAX: (919) 250-4151		UTILITY CONSTRUCTION PLANS ONLY	

UTILITY CONSTRUCTION

DOCUMENT NOT CONSIDERED FINAL UNLESS ALL SIGNATURES COMPLETED



REVISIONS

PW100 NOTES:

- SEE SUBSURFACE REPORT ENTITLED "STRUCTURE SUBSURFACE INVESTIGATION" FOR REEDY FORK PARKWAY SUPPLEMENTAL BORINGS FOR WATER AND SEWER LINE RELOCATION, DATED AUGUST 2019, FOR INFORMATION ABOUT BORINGS PERFORMED ALONG THE ROUTE OF PROPOSED WATER LINE, PW100.

THE ESTIMATED QUANTITY OF D.I. WATER PIPE FITTINGS ON THIS PLAN SHEET IS 7,060 POUNDS. THE ACTUAL QUANTITY AND TYPE OF FITTINGS WILL VARY BASED ON FIELD CONDITIONS.

MATCHLINE -L- STA. 76 + 50.00

MATCHLINE SEE SHEET UC-5B

MATCHLINE -YI- STA. 32 + 30.00 SEE SHEET UC-5D

END CONSTRUCTION -YI- STA. 35 + 50.00

END GRADE -YI- STA. 34 + 50.00

PROP. - 260 LF OF 36" ENC. PIPE (STEEL, MIN. W.T.=0.375"), 225 LF - BORE AND JACK OF 36"

PROP. - 473 LF 20" WATER LINE

ABANDON 406 LF 20" UTIL. PIPE

PROP. - 1 20" LINE STOP

PROP. - 1-2" AIR RELEASE VALVE