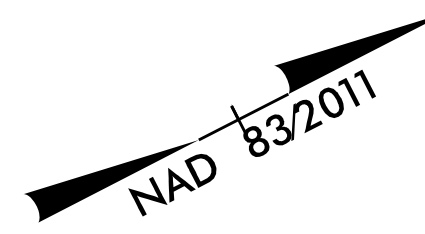
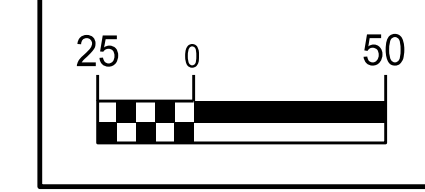


5/14/19

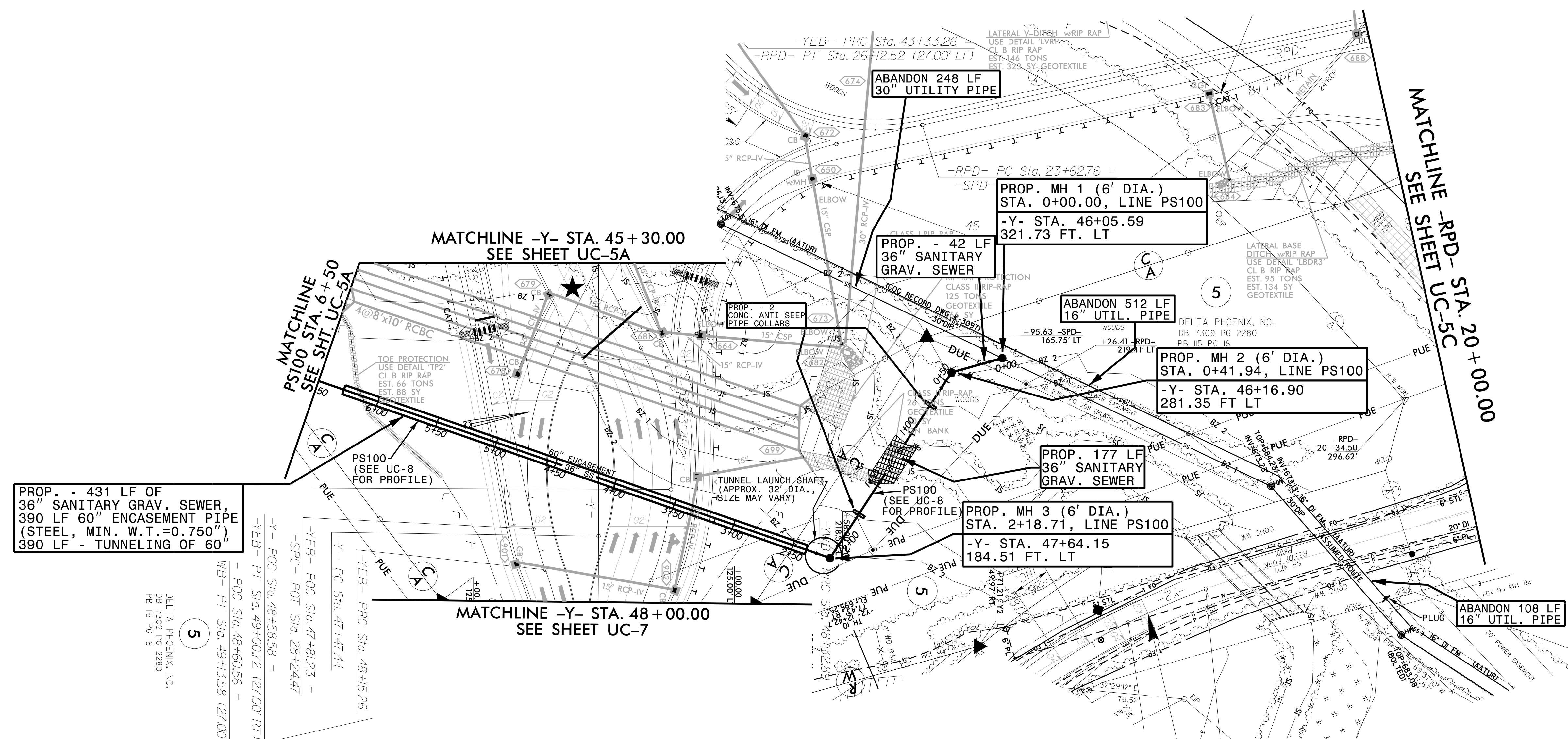


PROJECT REFERENCE NO.	SHEET NO.
R-4707	UC-5B
DESIGNED BY: DMP	
DRAWN BY: DMP	
CHECKED BY: DMP	
APPROVED BY:	
REVISED:	
NORTH CAROLINA DEPARTMENT OF TRANSPORTATION	3/26/2020
UTILITIES ENGINEERING SEC. PHONE: (919) 707-6690 FAX: (919) 250-4151	UTILITY CONSTRUCTION PLANS ONLY

# UTILITY CONSTRUCTION

DOCUMENT NOT CONSIDERED FINAL UNLESS ALL SIGNATURES COMPLETED

REVISIONS



PROP. - 431 LF OF 36" SANITARY GRAV. SEWER, 390 LF 60" ENCASEMENT PIPE (STEEL, MIN. W.T.=0.750") 390 LF - TUNNELING OF 60"

-Y- PC Sta. 48+58.58 =  
 -SPC- POT Sta. 28+24.47 =  
 -YEB- POC Sta. 49+00.72 (27.00' RT) =  
 -WB- PT Sta. 49+13.58 (27.00' RT) =  
 -YEB- POC Sta. 48+15.26 =  
 -Y- PC Sta. 47+47.44 =  
 -YEB- POC Sta. 47+81.23 =

DELTA PHOENIX, INC.  
DB 7309 PG 2280  
PB 115 PG 18

- PS100 NOTES:**
- SEE SUBSURFACE REPORT ENTITLED "STRUCTURE SUBSURFACE INVESTIGATION" FOR REEDY FORK PARKWAY SUPPLEMENTAL BORINGS FOR WATER AND SEWER LINE RELOCATION, DATED AUGUST 2019, FOR INFORMATION ABOUT BORINGS PERFORMED ALONG THE ROUTE OF PROPOSED SEWER LINE, PS100.
  - MANHOLES ON SEWER LINE PS100 SHALL BE PRECAST POLYMER CONCRETE, PER UC PROJECT SPECIAL PROVISIONS.
  - PIPE ON SEWER LINE PS100 SHALL BE DIP, PC 250, WITH INTERIOR CERAMIC EPOXY LINING, PER UC PROJECT SPECIAL PROVISIONS.
  - MH RING AND COVER FOR ALL PROPOSED MANHOLES ON SEWER LINE PS100 SHALL BE WATERTIGHT BOLT-DOWN TYPE, PER CITY OF GREENSBORO STD. NO. 205-B.
  - TEMPORARY BYPASS PUMPING OF FLOW IN EX. 30" SEWER LINE WILL BE REQUIRED WHEN TYING PROP. MH'S INTO THE EX. SEWER LINE. SEE DIVISION 15, SECTION 1520-3-A-1 OF THE STANDARD SPECIFICATIONS. COST SHALL BE INCIDENTAL TO THE CONTRACT.

THE ESTIMATED QUANTITY OF D.I. SEWER PIPE FITTINGS ON THIS PLAN SHEET IS 145 POUNDS. THE ACTUAL QUANTITY AND TYPE OF FITTINGS WILL VARY BASED ON FIELD CONDITIONS.