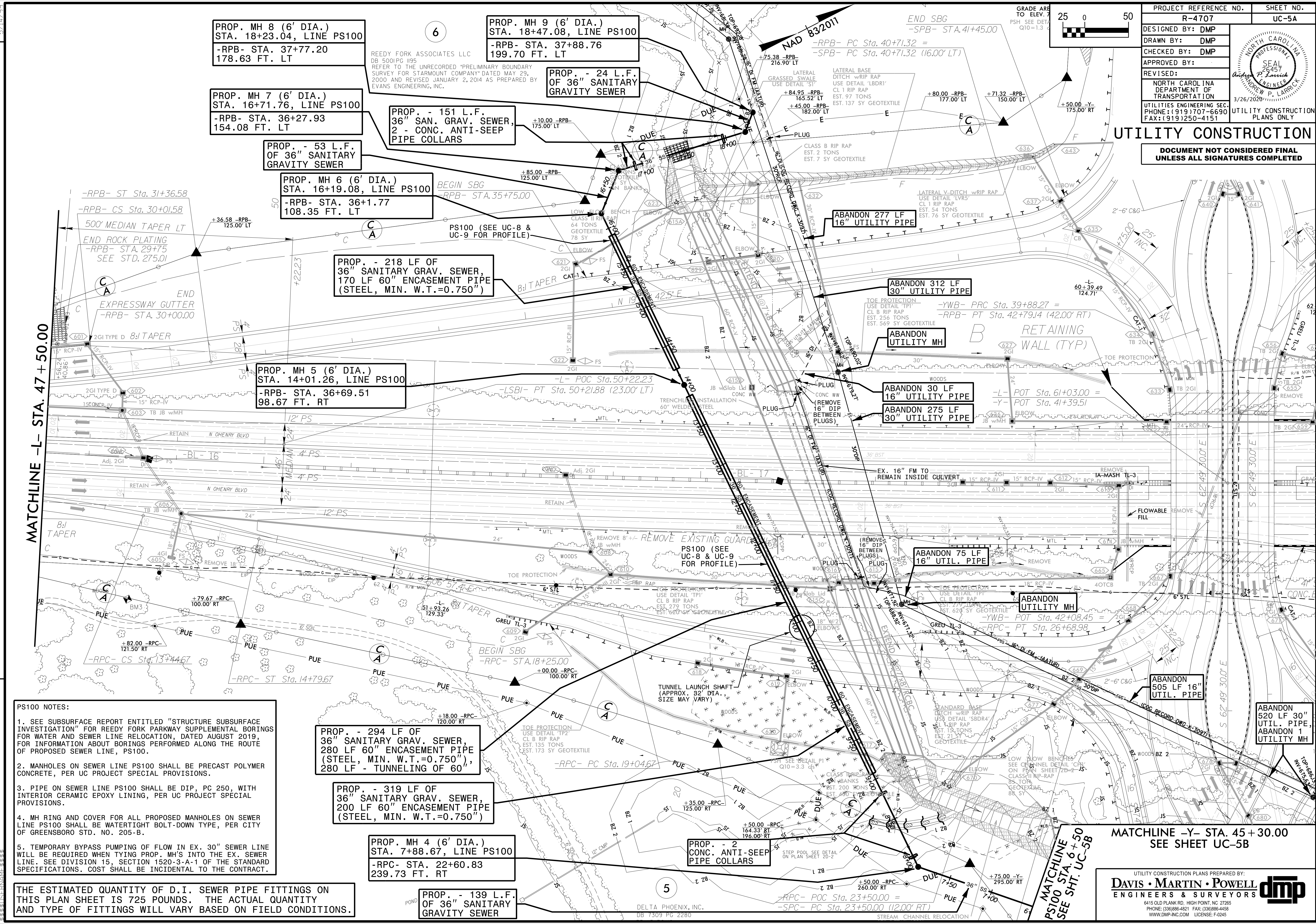


PROJECT REFERENCE NO.	R-4707	SHEET NO.	UC-5A
DESIGNED BY:	DMP		
DRAWN BY:	DMP		
CHECKED BY:	DMP		
APPROVED BY:			
REVISED:			
NORTH CAROLINA DEPARTMENT OF TRANSPORTATION		UTILITY CONSTRUCTION PLANS ONLY	
UTILITIES ENGINEERING SEC. PHONE: (919) 707-6690 FAX: (919) 250-4151		3/26/2020	

UTILITY CONSTRUCTION
DOCUMENT NOT CONSIDERED FINAL UNLESS ALL SIGNATURES COMPLETED



- PS100 NOTES:**
- SEE SUBSURFACE REPORT ENTITLED "STRUCTURE SUBSURFACE INVESTIGATION" FOR REEDY FORK PARKWAY SUPPLEMENTAL BORINGS FOR WATER AND SEWER LINE RELOCATION, DATED AUGUST 2019 FOR INFORMATION ABOUT BORINGS PERFORMED ALONG THE ROUTE OF PROPOSED SEWER LINE, PS100.
 - MANHOLES ON SEWER LINE PS100 SHALL BE PRECAST POLYMER CONCRETE, PER UC PROJECT SPECIAL PROVISIONS.
 - PIPE ON SEWER LINE PS100 SHALL BE DIP, PC 250, WITH INTERIOR CERAMIC EPOXY LINING, PER UC PROJECT SPECIAL PROVISIONS.
 - MH RING AND COVER FOR ALL PROPOSED MANHOLES ON SEWER LINE PS100 SHALL BE WATERTIGHT BOLT-DOWN TYPE, PER CITY OF GREENSBORO STD. NO. 205-B.
 - TEMPORARY BYPASS PUMPING OF FLOW IN EX. 30" SEWER LINE WILL BE REQUIRED WHEN TYING PROP. MH'S INTO THE EX. SEWER LINE. SEE DIVISION 15, SECTION 1520-3-A-1 OF THE STANDARD SPECIFICATIONS. COST SHALL BE INCIDENTAL TO THE CONTRACT.

THE ESTIMATED QUANTITY OF D.I. SEWER PIPE FITTINGS ON THIS PLAN SHEET IS 725 POUNDS. THE ACTUAL QUANTITY AND TYPE OF FITTINGS WILL VARY BASED ON FIELD CONDITIONS.

PROP. MH 8 (6' DIA.)
STA. 18+23.04, LINE PS100
-RPB- STA. 37+77.20
178.63 FT. LT

PROP. MH 9 (6' DIA.)
STA. 18+47.08, LINE PS100
-RPB- STA. 37+88.76
199.70 FT. LT

PROP. MH 7 (6' DIA.)
STA. 16+71.76, LINE PS100
-RPB- STA. 36+27.93
154.08 FT. LT

PROP. - 151 L.F.
36" SAN. GRAV. SEWER,
2 - CONC. ANTI-SEEP
PIPE COLLARS

PROP. - 53 L.F.
OF 36" SANITARY
GRAVITY SEWER

PROP. MH 6 (6' DIA.)
STA. 16+19.08, LINE PS100
-RPB- STA. 36+1.77
108.35 FT. LT

PROP. - 218 LF OF
36" SANITARY GRAV. SEWER,
170 LF 60" ENCASEMENT PIPE
(STEEL, MIN. W.T.=0.750")

PROP. MH 5 (6' DIA.)
STA. 14+01.26, LINE PS100
-RPB- STA. 36+69.51
98.67 FT. RT

PROP. - 294 LF OF
36" SANITARY GRAV. SEWER,
280 LF 60" ENCASEMENT PIPE
(STEEL, MIN. W.T.=0.750"),
280 LF - TUNNELING OF 60"

PROP. - 319 LF OF
36" SANITARY GRAV. SEWER,
200 LF 60" ENCASEMENT PIPE
(STEEL, MIN. W.T.=0.750")

PROP. MH 4 (6' DIA.)
STA. 7+88.67, LINE PS100
-RPC- STA. 22+60.83
239.73 FT. RT

PROP. - 139 L.F.
OF 36" SANITARY
GRAVITY SEWER

PROP. - 2
CONC. ANTI-SEEP
PIPE COLLARS

ABANDON
520 LF 30"
UTIL. PIPE,
ABANDON 11
UTILITY MH

ABANDON
505 LF 16"
UTIL. PIPE

ABANDON 75 LF
16" UTIL. PIPE

ABANDON 30 LF
16" UTILITY PIPE
ABANDON 275 LF
30" UTILITY PIPE

ABANDON 312 LF
30" UTILITY PIPE

ABANDON 277 LF
16" UTILITY PIPE

MATCHLINE -L- STA. 47 + 50.00

MATCHLINE -Y- STA. 45 + 30.00
SEE SHEET UC-5B

UTILITY CONSTRUCTION PLANS PREPARED BY:
DAVIS • MARTIN • POWELL
ENGINEERS & SURVEYORS

6415 OLD PLANK RD. HIGH POINT, NC 27265
PHONE: (336) 886-4821 FAX: (336) 886-4458
WWW.DMP-INC.COM LICENSE: F-2445

REVISIONS

5/14/2020