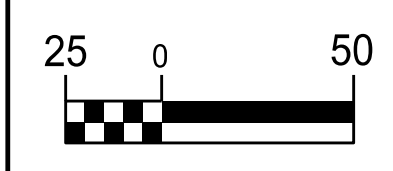


5/14/19

THIS SHEET IS FOR INFORMATIONAL PURPOSES ONLY. NO WATER OR SEWER CONFLICTS ARE ANTICIPATED ON THIS SHEET. SEE NOTE BELOW AT RIGHT SIDE OF SHEET REGARDING PROPOSED STORM DRAIN CROSSING EXISTING WATER LINE.

-RPB- CURVE DATA

PI Sta  2+21.22	PI Sta  6+63.54
$\Delta = 3^{\circ} 06' 34.5''$ (LT)	$\Delta = 3^{\circ} 06' 34.5''$ (RT)
$D = 0^{\circ} 42' 10.9''$	$D = 0^{\circ} 42' 10.9''$
$L = 442.32'$	$L = 442.32'$
$T = 221.22'$	$T = 221.22'$
$R = 8,150.00'$	$R = 8,150.00'$
$e = NC$	$e = NC$

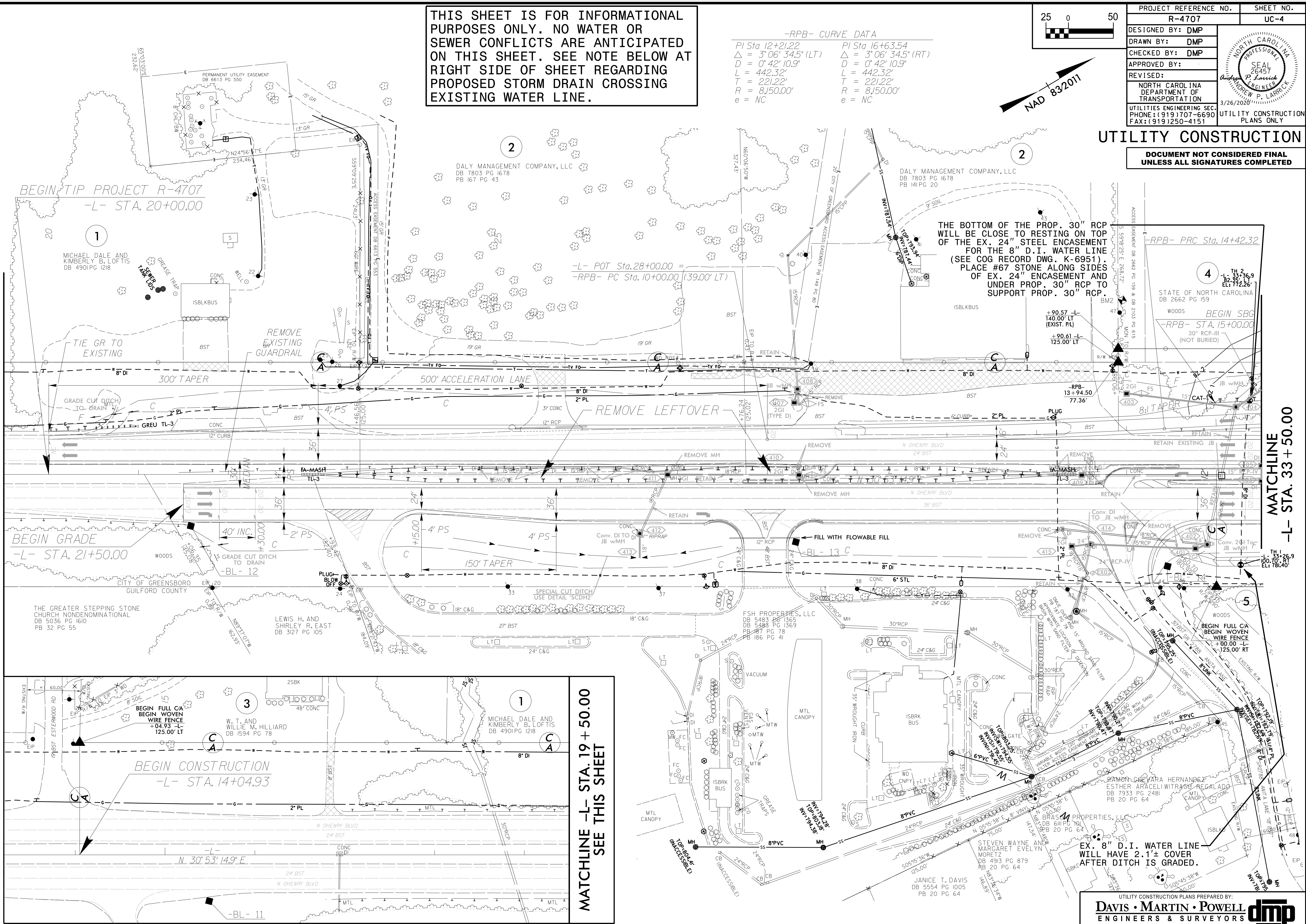


PROJECT REFERENCE NO. R-4707	SHEET NO. UC-4
DESIGNED BY: DMP	
DRAWN BY: DMP	
CHECKED BY: DMP	
APPROVED BY:	
REVISED:	
NORTH CAROLINA DEPARTMENT OF TRANSPORTATION	3/26/2020
UTILITIES ENGINEERING SEC. PHONE: (919) 707-6690 FAX: (919) 250-4151	UTILITY CONSTRUCTION PLANS ONLY

**UTILITY CONSTRUCTION**  
DOCUMENT NOT CONSIDERED FINAL UNLESS ALL SIGNATURES COMPLETED

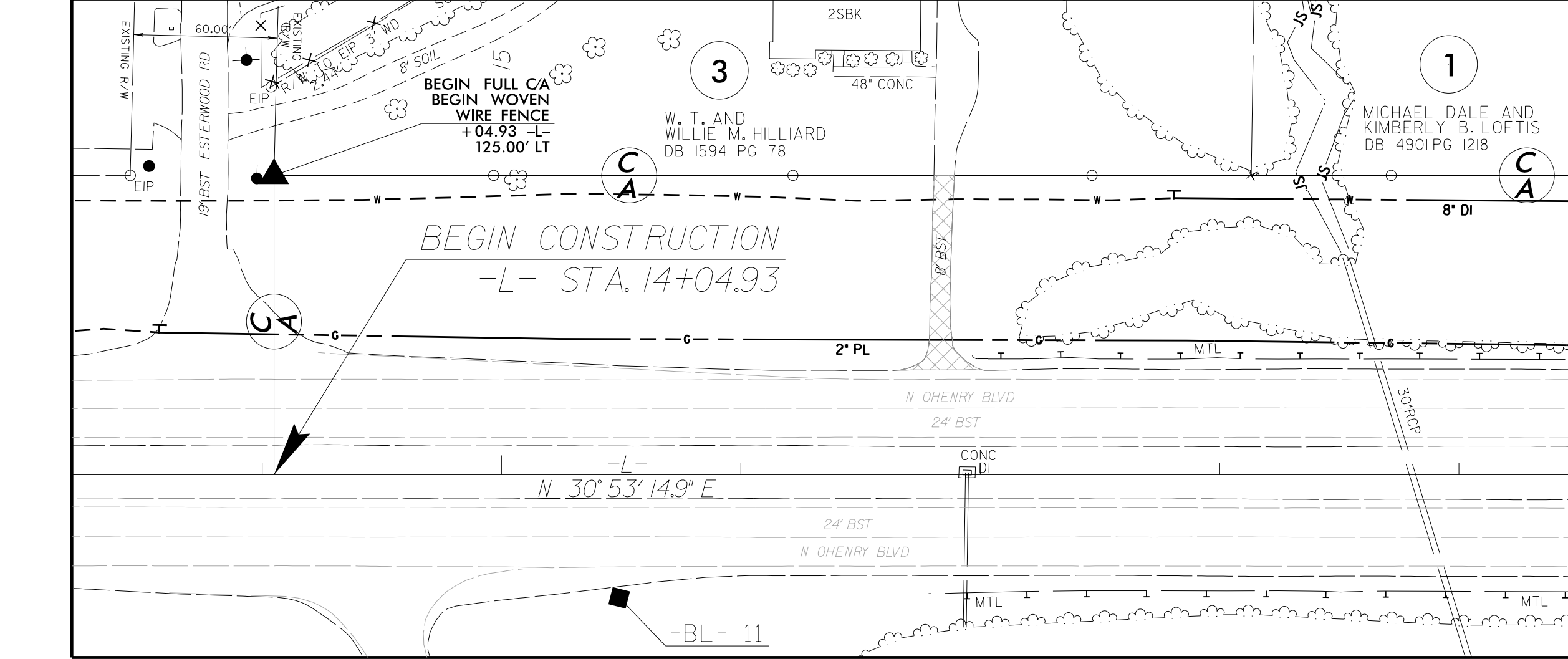
MATCHLINE -L- STA. 19 + 50.00 SEE INSET THIS SHEET

MATCHLINE -L- STA. 33 + 50.00



THE BOTTOM OF THE PROP. 30" RCP WILL BE CLOSE TO RESTING ON TOP OF THE EX. 24" STEEL ENCASEMENT FOR THE 8" D.I. WATER LINE (SEE COG RECORD DWG. K-6951). PLACE #67 STONE ALONG SIDES OF EX. 24" ENCASEMENT AND UNDER PROP. 30" RCP TO SUPPORT PROP. 30" RCP.

EX. 8" D.I. WATER LINE WILL HAVE 2.1'± COVER AFTER DITCH IS GRADED.



MATCHLINE -L- STA. 19 + 50.00 SEE THIS SHEET