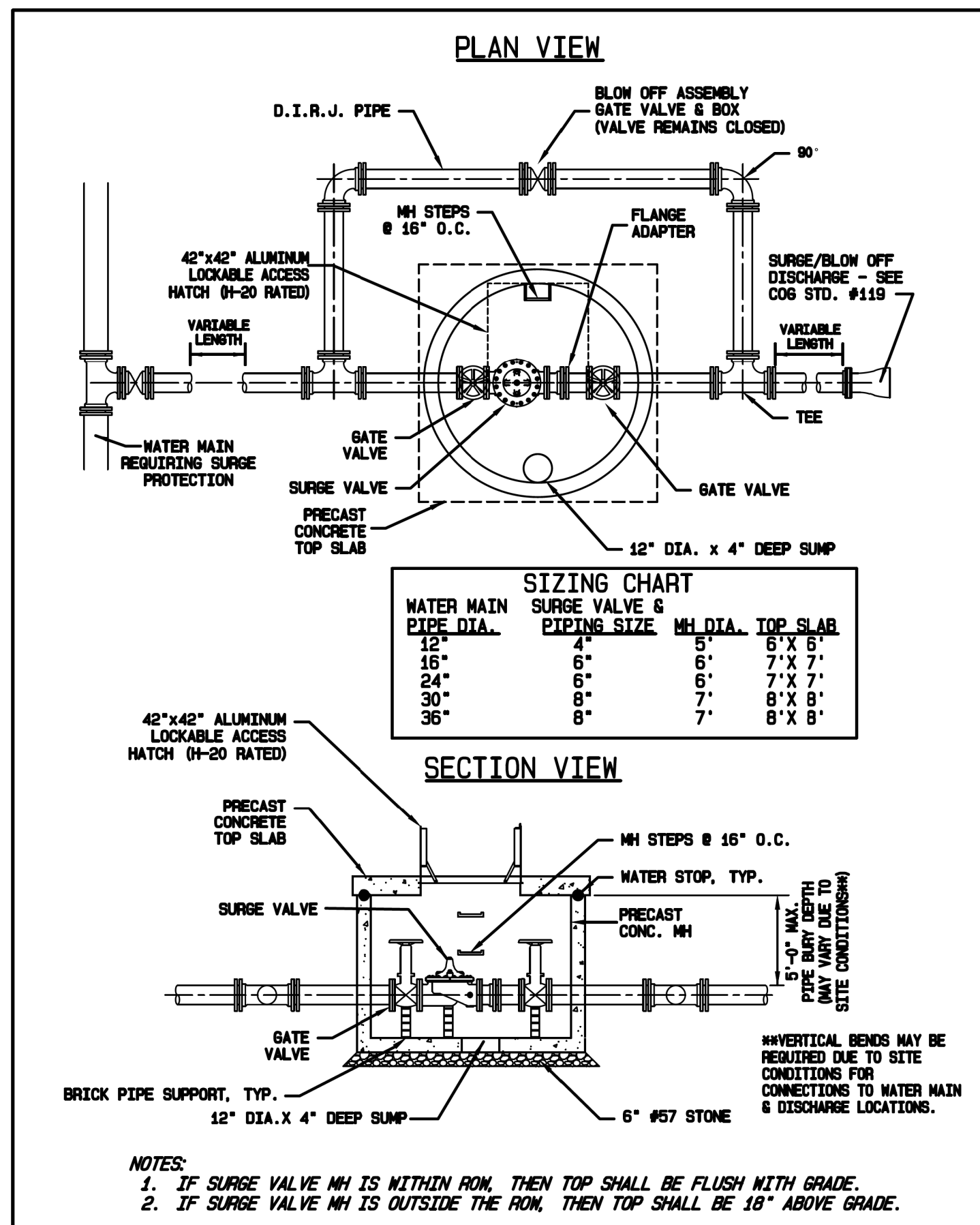


5/14/99

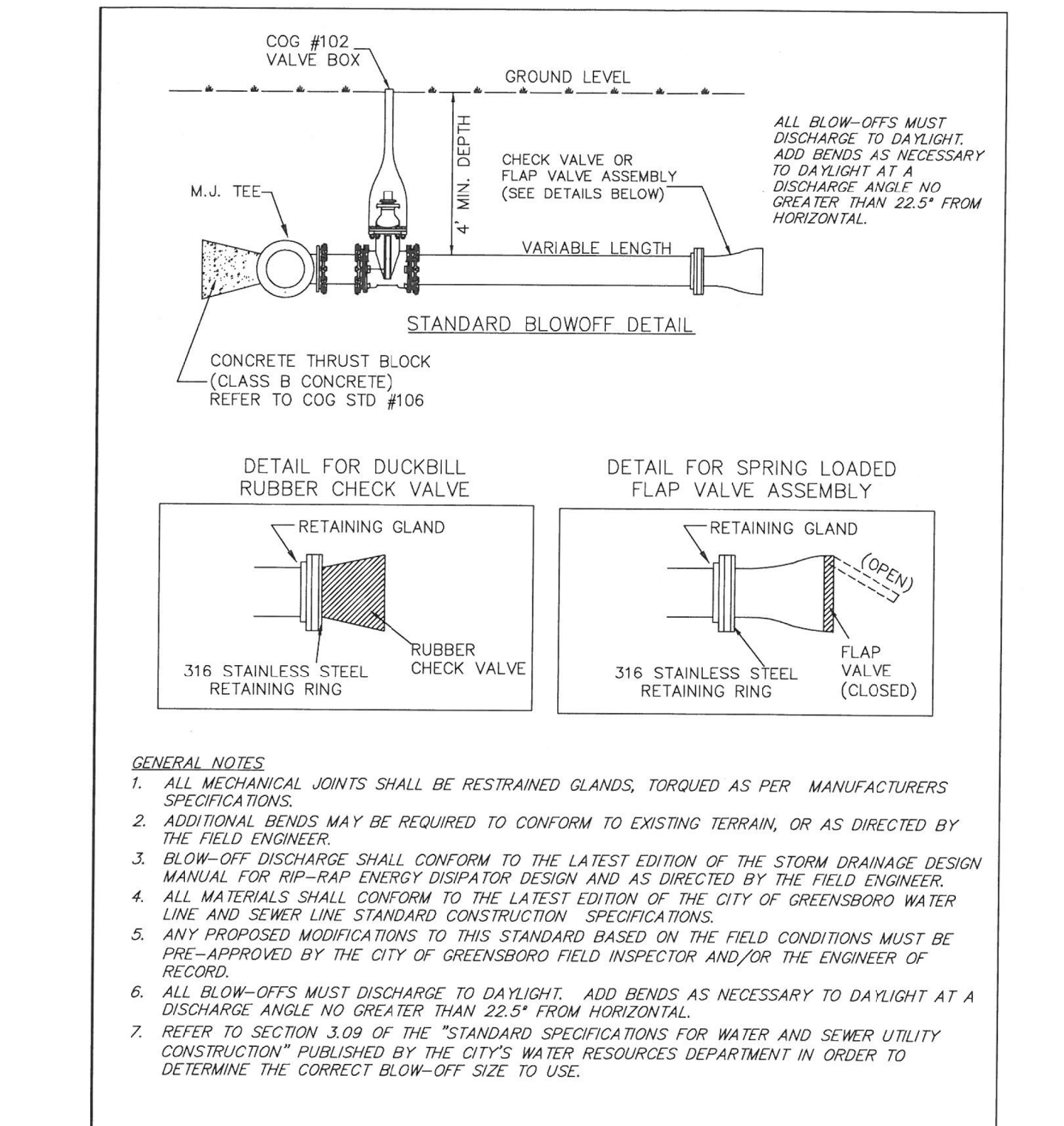


CITY OF GREENSBORO

SURGE VALVE DETAIL

STD. NO.	REV.
122	09/19 10/19

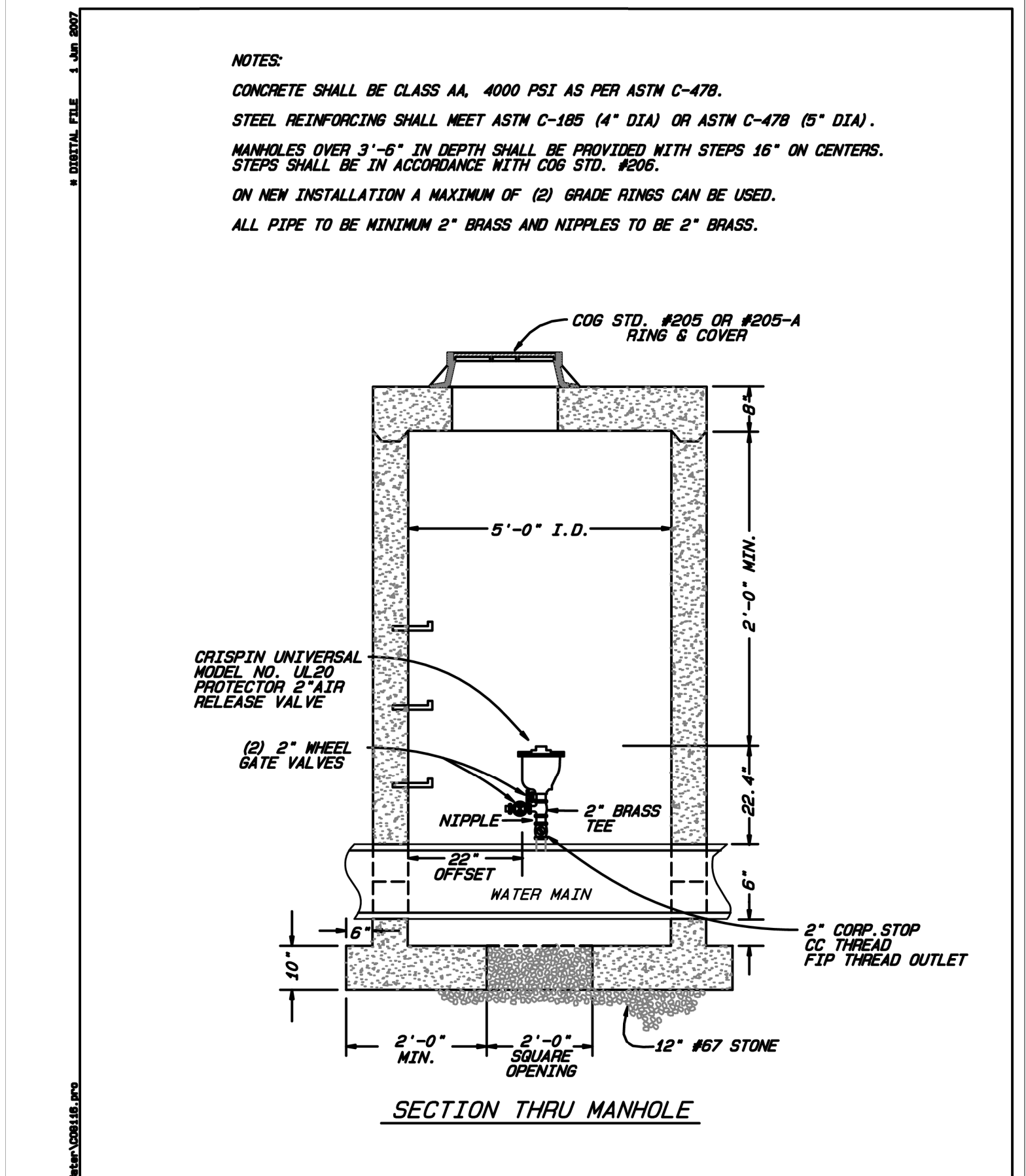
NOTE:
USE THE DETAIL ABOVE FOR THE "PRESSURE RELIEF VALVE IN 7" DIA. MH" SHOWN ON SHEET UC-6 AND AS DESCRIBED IN THE UC PROJECT SPECIAL PROVISIONS.



CITY OF GREENSBORO

BLOW-OFF DETAIL (4", 6" & 8")

STD. NO.	REV.
119	06/13

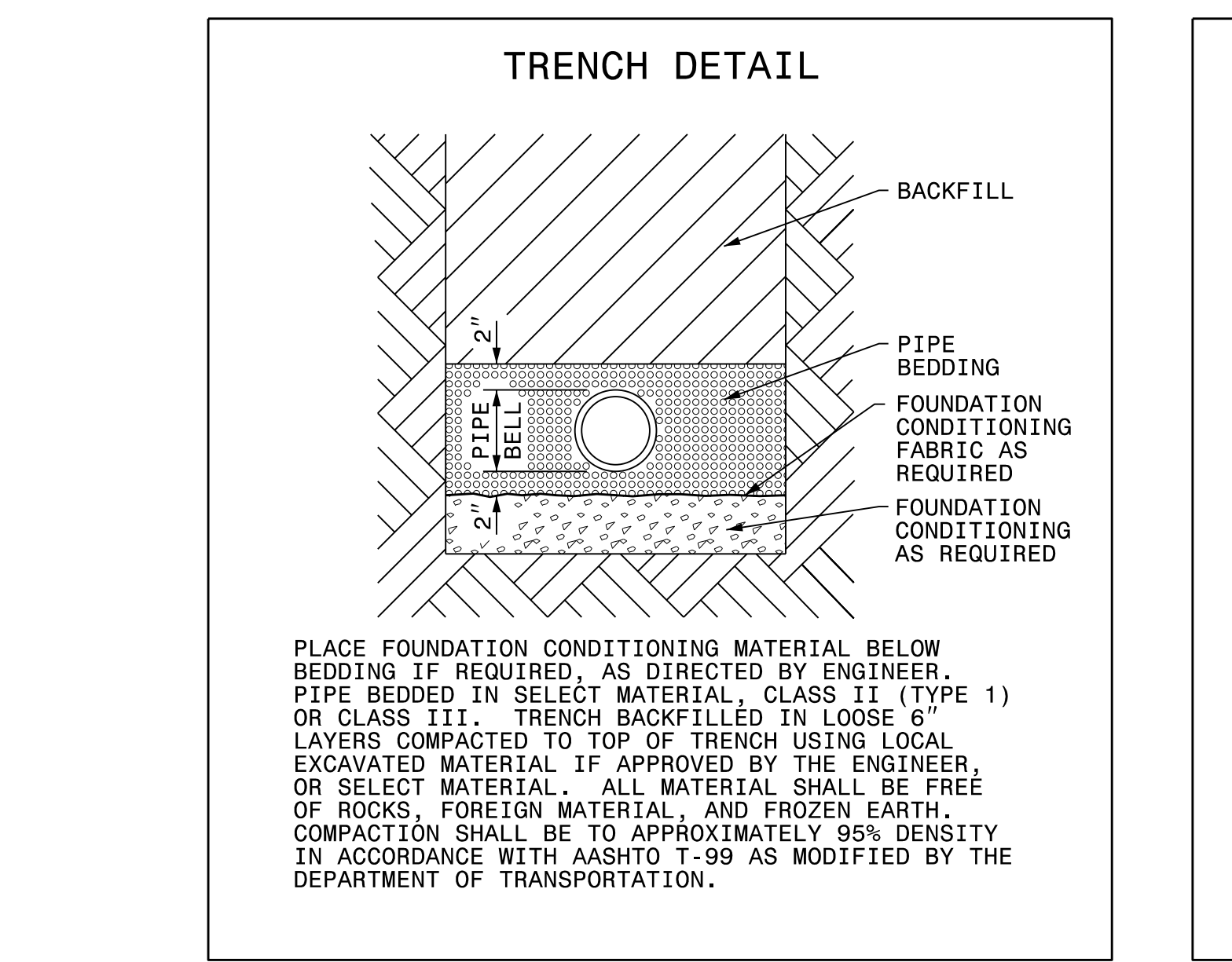


CITY OF GREENSBORO

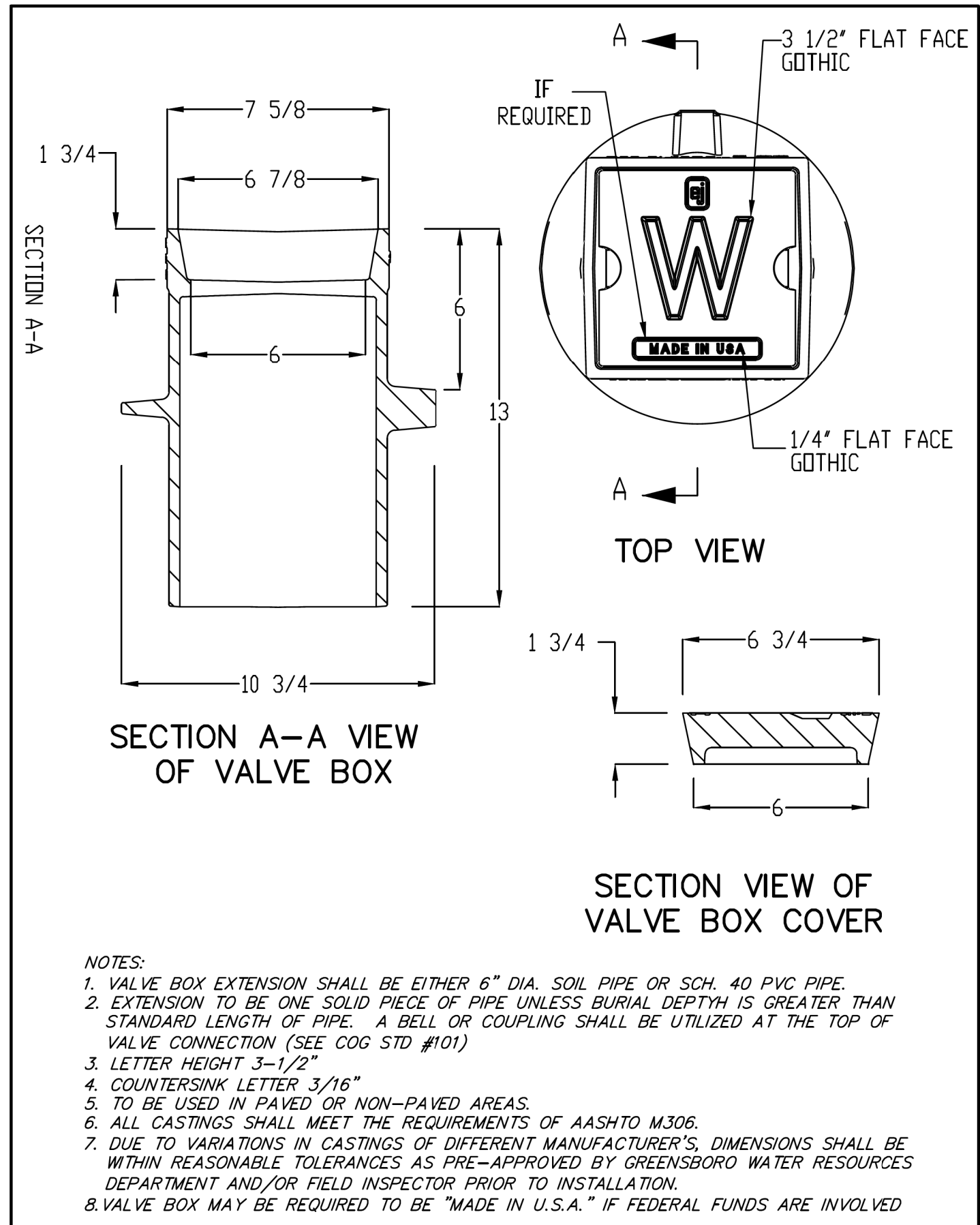
STANDARD AIR RELIEF VALVE WITH ASSEMBLY AND MANHOLE FOR WATER LINES

STD. NO.	REV.
116	06-99 09-02 11-01 06-07 08-02

NOTE:
FOR WATER AND SEWER ARV'S, INSTEAD OF TAPPING THE MAIN, CONTRACTOR SHALL INSTALL A MAIN-LINE TEE TURNED UPRIGHT, WITH A BLIND FLANGE BOLTED TO THE TOP SIDE OF THE TEE. THE BLIND FLANGE SHALL BE TAPPED TO ACCOMODATE THE 2" CORPORATION STOP. COST FOR THE TEE AND TAPPED BLIND FLANGE SHALL BE INCIDENTAL TO THE COST OF THE 2" ARV.
FOR 2" ARV ON 20" WATER MAIN, USE A 20"x12" TEE.



PLACE FOUNDATION CONDITIONING MATERIAL BELOW BEDDING IF REQUIRED, AS DIRECTED BY ENGINEER. PIPE BEDDED IN SELECT MATERIAL, CLASS II (TYPE 1) OR CLASS III. TRENCH BACKFILLED IN LOOSE 6" LAYERS COMPACTED TO TOP OF TRENCH USING LOCAL EXCAVATED MATERIAL IF APPROVED BY THE ENGINEER, OR SELECT MATERIAL. ALL MATERIAL SHALL BE FREE OF ROCKS, FOREIGN MATERIAL, AND FROZEN EARTH. COMPACTION SHALL BE TO APPROXIMATELY 95% DENSITY IN ACCORDANCE WITH AASHTO T-99 AS MODIFIED BY THE DEPARTMENT OF TRANSPORTATION.



CITY OF GREENSBORO

WATER VALVE BOX AND EXTENSION

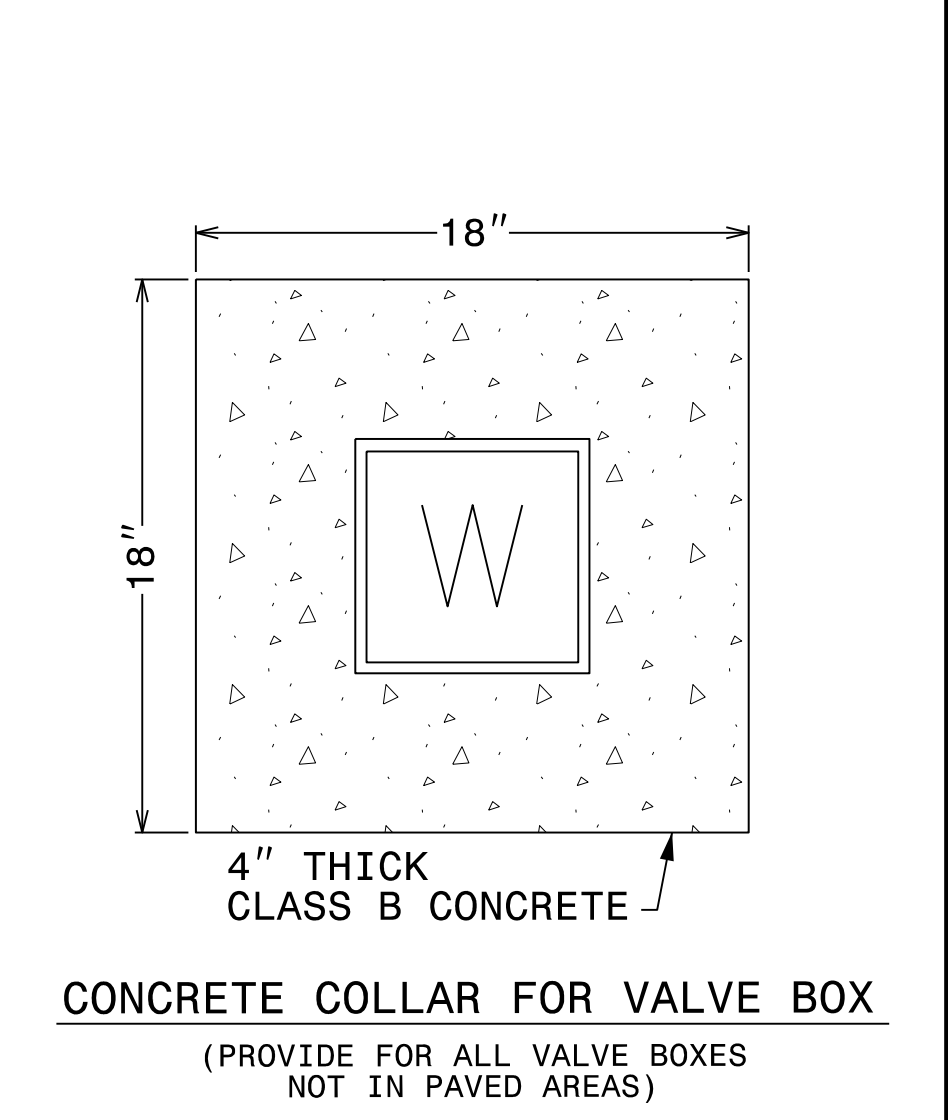
STD. NO.	REV.
102	03-93 03-12 08-02 12-12 09-10 03-15

NOTE:
1. VALVE BOX EXTENSION SHALL BE EITHER 6" DIA. SOIL PIPE OR SCH. 40 PVC PIPE.
2. EXTENSION TO BE ONE SOLID PIECE OF PIPE UNLESS BURIAL DEPTH IS GREATER THAN STANDARD LENGTH OF PIPE. A BELL OR COUPLING SHALL BE UTILIZED AT THE TOP OF VALVE CONNECTION (SEE COG STD #101)
3. LETTER HEIGHT 3-1/2"
4. COUNTERSINK LETTER 3/16"
5. TO BE USED IN PAVED OR NON-PAVED AREAS.
6. ALL CASTINGS SHALL MEET THE REQUIREMENTS OF AASHTO M306.
7. DUE TO VARIATIONS IN CASTINGS OF DIFFERENT MANUFACTURER'S, DIMENSIONS SHALL BE WITHIN REASONABLE TOLERANCES AS PRE-APPROVED BY GREENSBORO WATER RESOURCES DEPARTMENT AND/OR FIELD INSPECTOR PRIOR TO INSTALLATION.
8. VALVE BOX MAY BE REQUIRED TO BE "MADE IN U.S.A." IF FEDERAL FUNDS ARE INVOLVED

PROJECT REFERENCE NO.	SHEET NO.
R-4707	UC-3B
DESIGNED BY: APL	
DRAWN BY: RDL	
CHECKED BY: APL	
APPROVED BY:	
REVISED:	
NORTH CAROLINA DEPARTMENT OF TRANSPORTATION UTILITIES ENGINEERING SEC. PHONE: (919) 707-6690 FAX: (919) 250-4151 UTILITY CONSTRUCTION PLANS ONLY	

UTILITY CONSTRUCTION

DOCUMENT NOT CONSIDERED FINAL UNLESS ALL SIGNATURES COMPLETED



MAXIMUM TRENCH WIDTH AT TOP OF PIPE			
NOMINAL PIPE SIZE (INCHES)	TRENCH WIDTH (INCHES)	NOMINAL PIPE SIZE (INCHES)	TRENCH WIDTH (INCHES)
4	28	20	44
6	30	24	48
8	32	30	54
10	34	36	60
12	36	42	66
14	38	48	72
16	40	54	78
18	42		