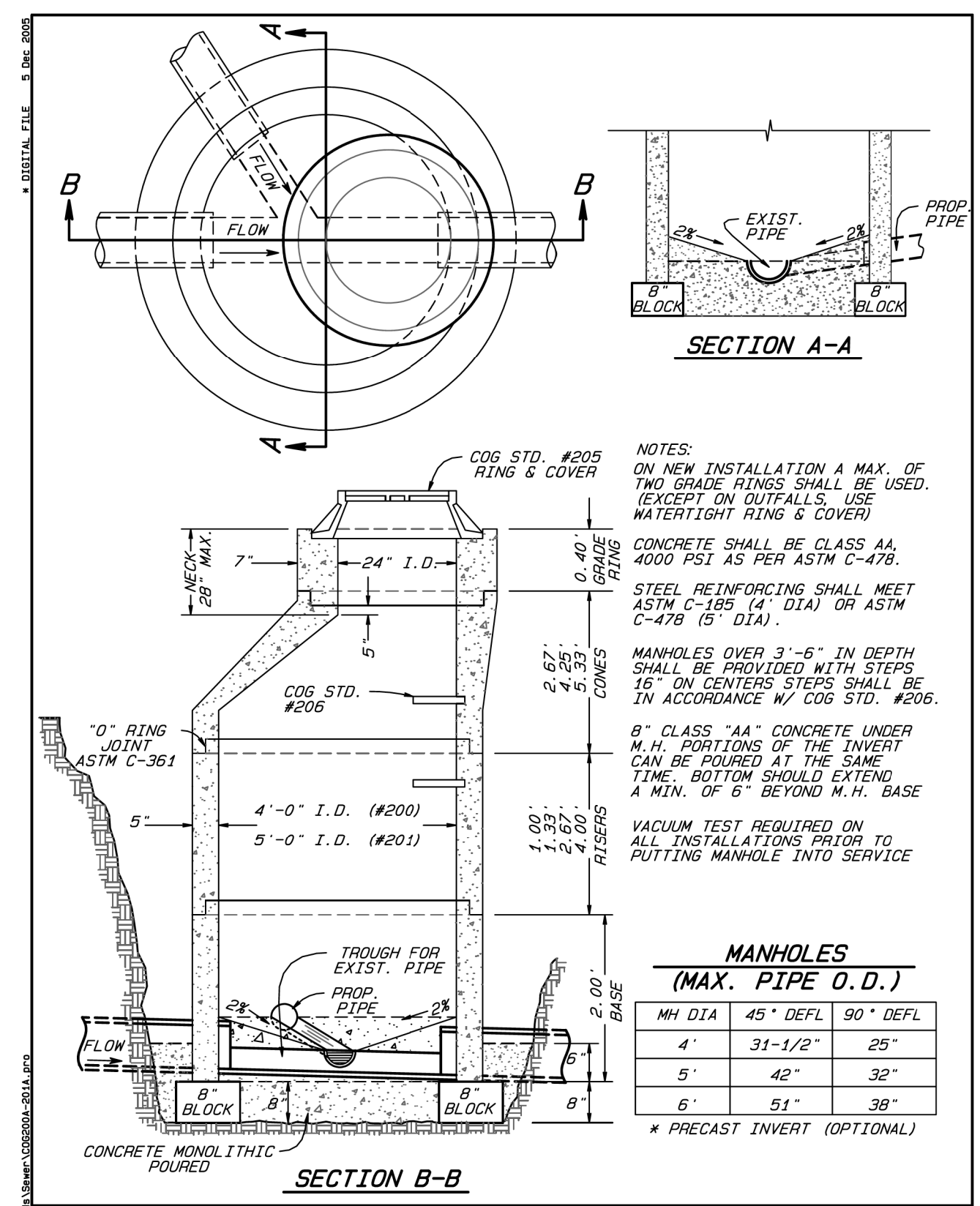
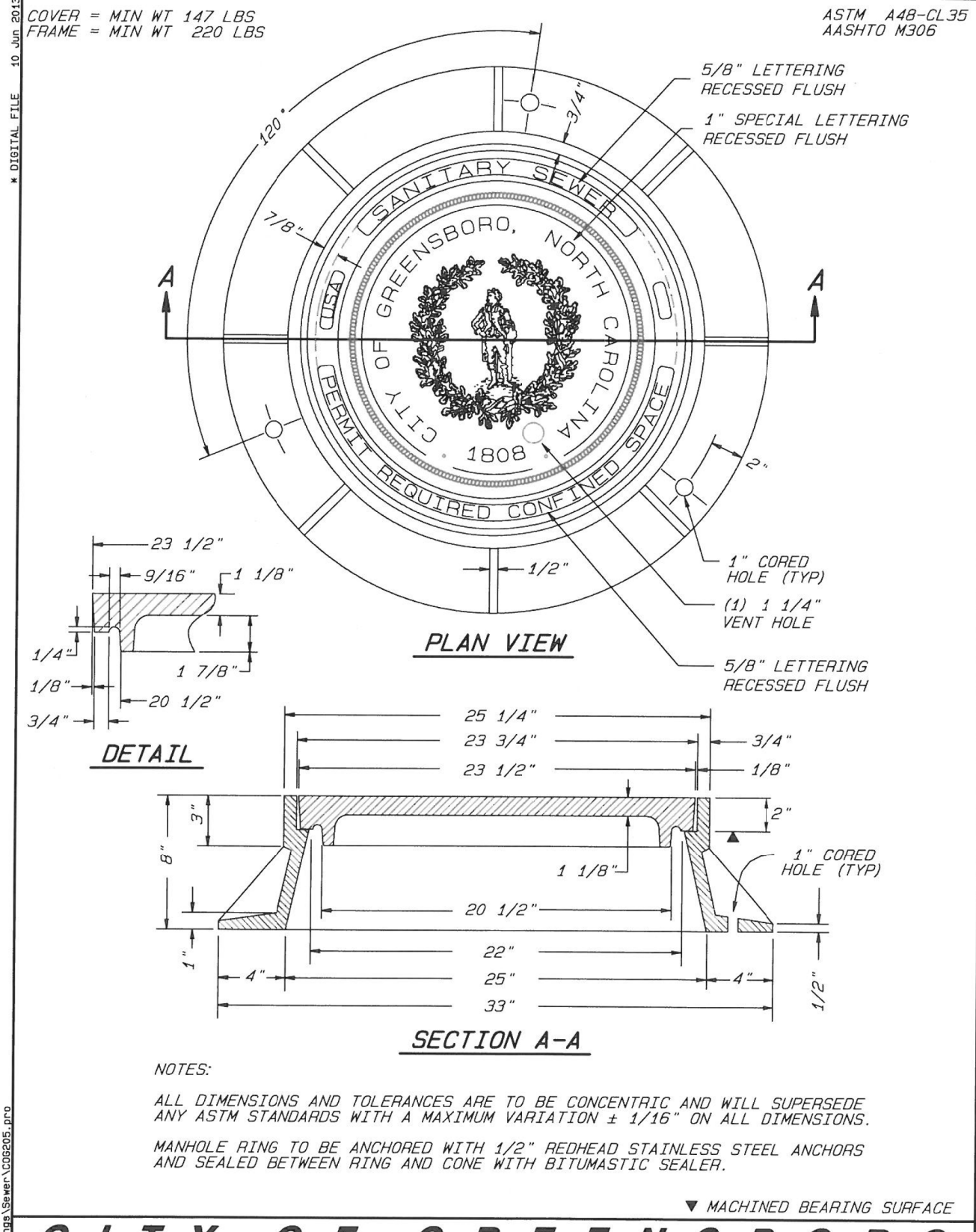


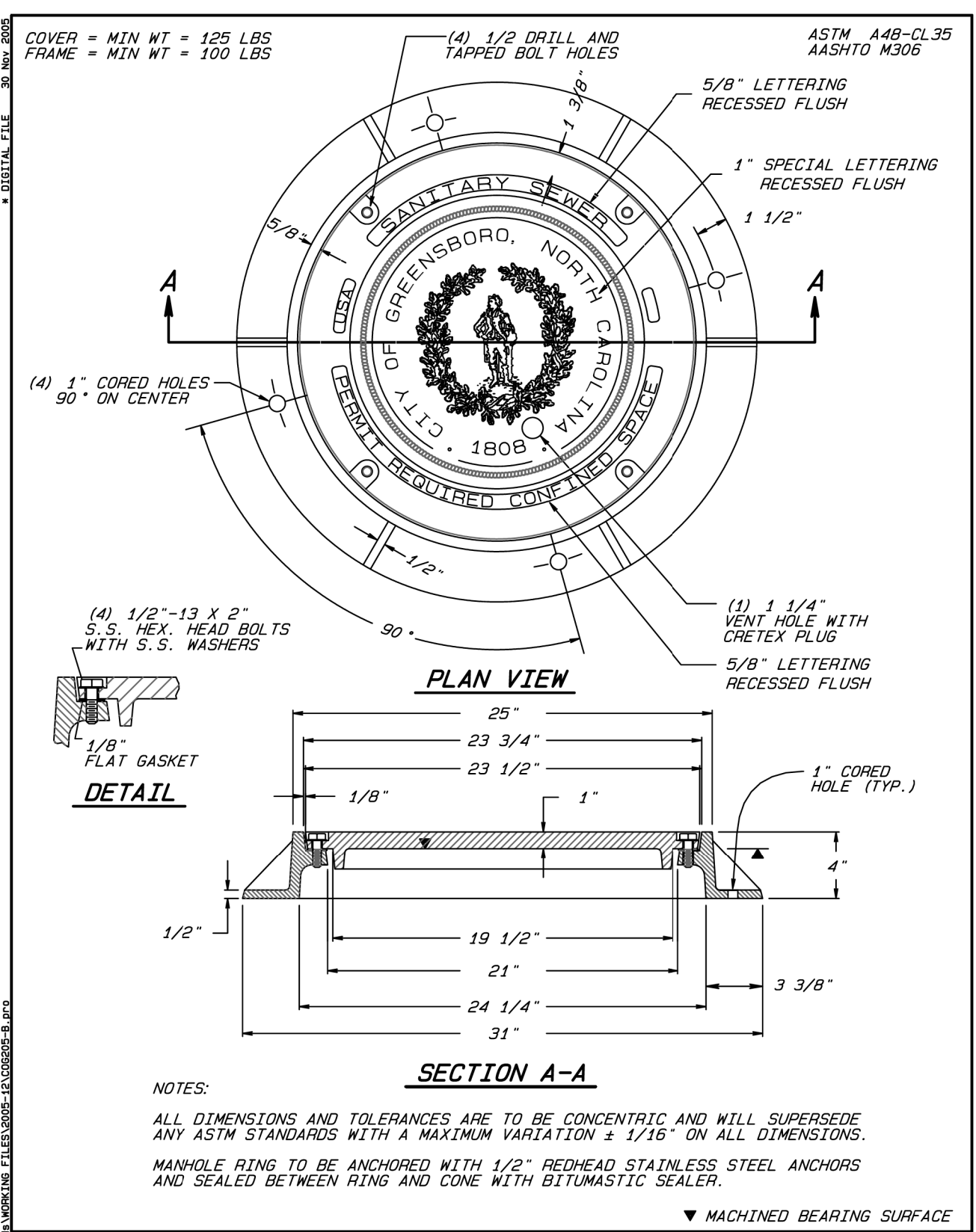
5/14/20



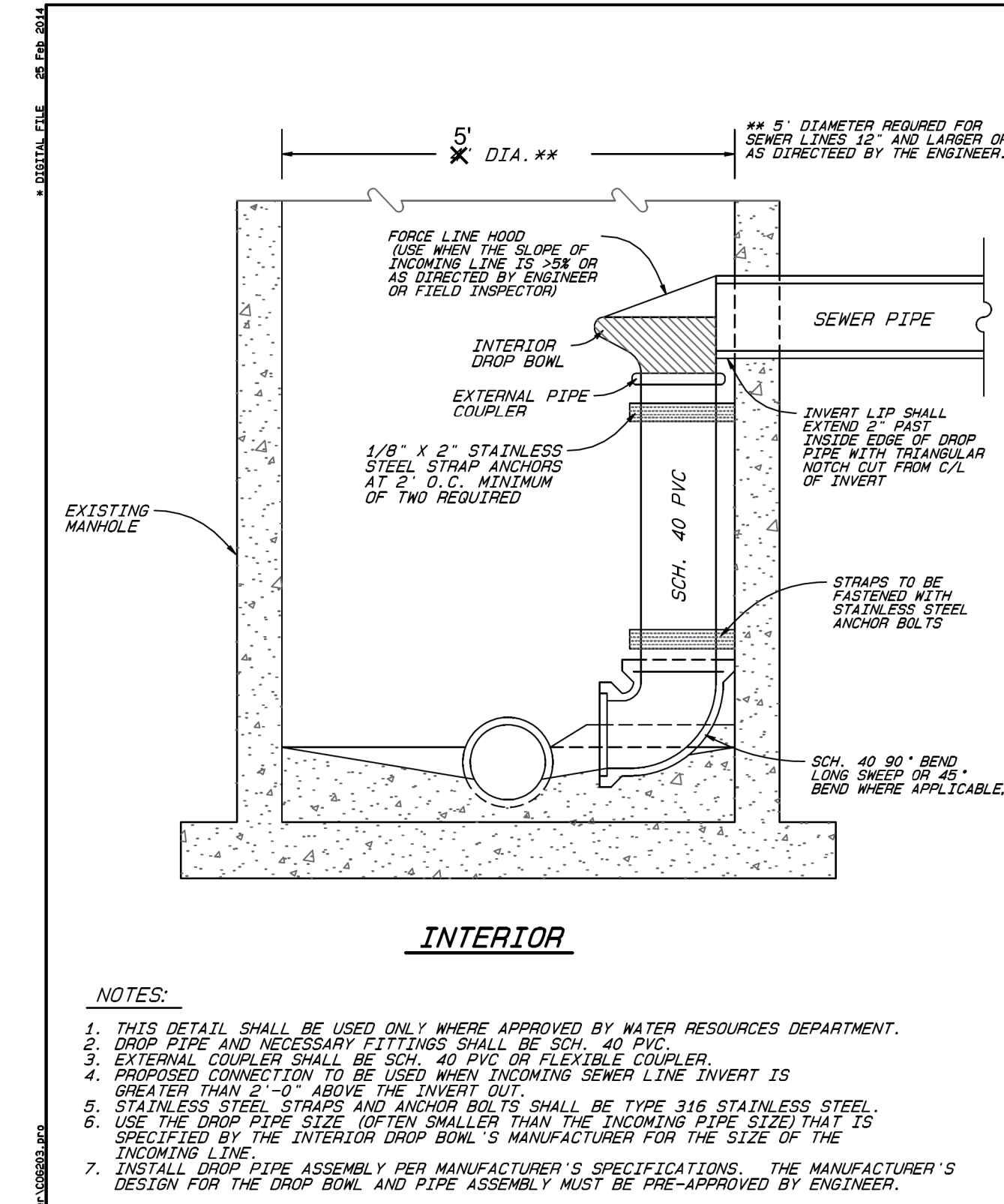
CITY OF GREENSBORO
 STANDARD 4' I.D. & 5' I.D. ECCENTRIC PRECAST BOTTOMLESS MANHOLE OVER EXISTING SANITARY SEWER (DOGHOUSE MANHOLE)
 STD. NO. 200A
 REV. 201A
 DEC-05



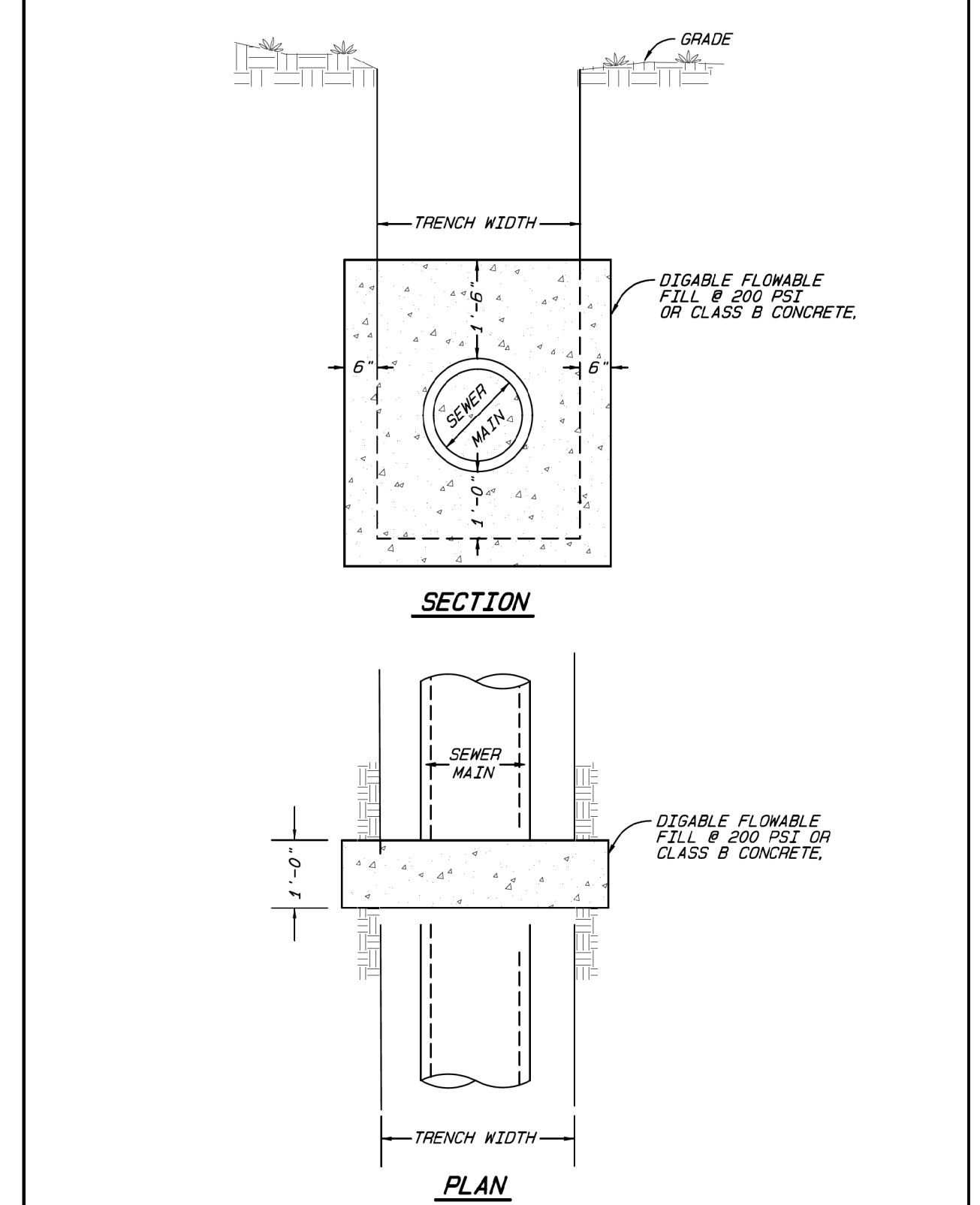
CITY OF GREENSBORO
 STANDARD MANHOLE RING AND COVER
 STD. NO. 205
 REV. 06-13
 12-05



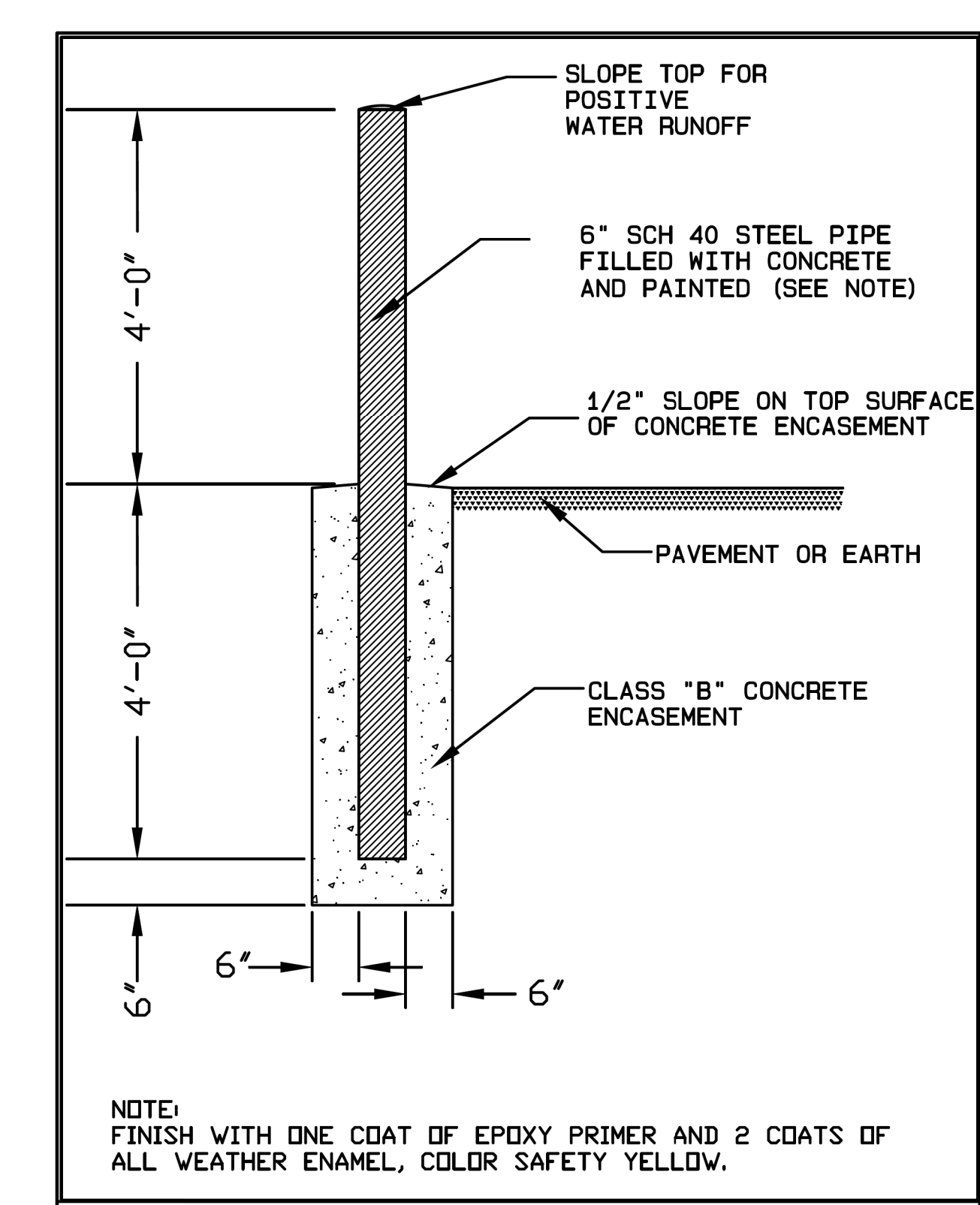
CITY OF GREENSBORO
 STANDARD WATERTIGHT MANHOLE RING AND COVER
 STD. NO. 205-B
 REV. 06-15
 MAR-97 DEC-05
 MAR-99 MAR-91



CITY OF GREENSBORO
 DROP CONNECTION (INTERIOR) FOR EXISTING SANITARY SEWER MANHOLE
 STD. NO. 203
 REV. 03-14
 06-03



CITY OF GREENSBORO
 ANTI-SEEP PIPE COLLAR FOR SEWER LINES
 STD. NO. 219
 REV. 06-15



CITY OF GREENSBORO
 BOLLARD (STATIONARY)
 STD. NO. 121
 REV. 06/15

PROJECT REFERENCE NO. R-4707 SHEET NO. UC-3A

DESIGNED BY: APL
 DRAWN BY: RDL
 CHECKED BY: APL
 APPROVED BY:
 REVISED:

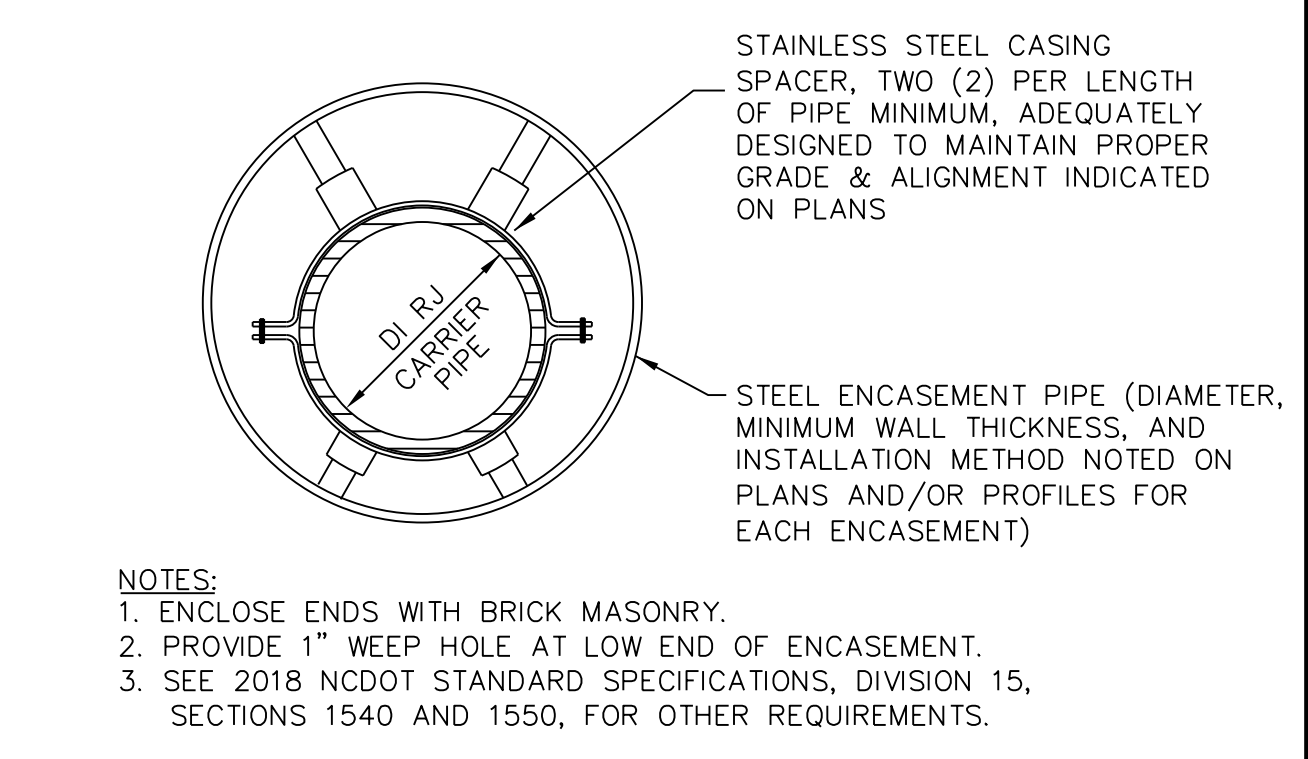
NORTH CAROLINA PROFESSIONAL ENGINEER
 SEAL 26457
 Andrew P. Larrick
 Andrew P. Larrick
 3/26/2020

NORTH CAROLINA DEPARTMENT OF TRANSPORTATION
 UTILITIES ENGINEERING SEC. PHONE: (919) 707-6690 FAX: (919) 250-4151
 UTILITY CONSTRUCTION PLANS ONLY

UTILITY CONSTRUCTION

DOCUMENT NOT CONSIDERED FINAL UNLESS ALL SIGNATURES COMPLETED

COG STD. DETAIL 203 SHALL BE USED FOR ALL SANITARY SEWER DROP MANHOLES, WITH 2.5 FEET OR MORE OF VERTICAL DROP BETWEEN THE INLET SEWER PIPE AND THE OUTLET SEWER PIPE. ALL SANITARY SEWER DROP MANHOLES SHALL BE 5' DIAMETER WITH INSIDE DROP ASSEMBLIES. THE COST OF THE INSIDE DROP ASSEMBLIES SHALL BE INCIDENTAL TO THE COST OF THE MANHOLES.



CITY OF GREENSBORO
 TYPICAL ENCASEMENT PIPE SECTION
 N.T.S.