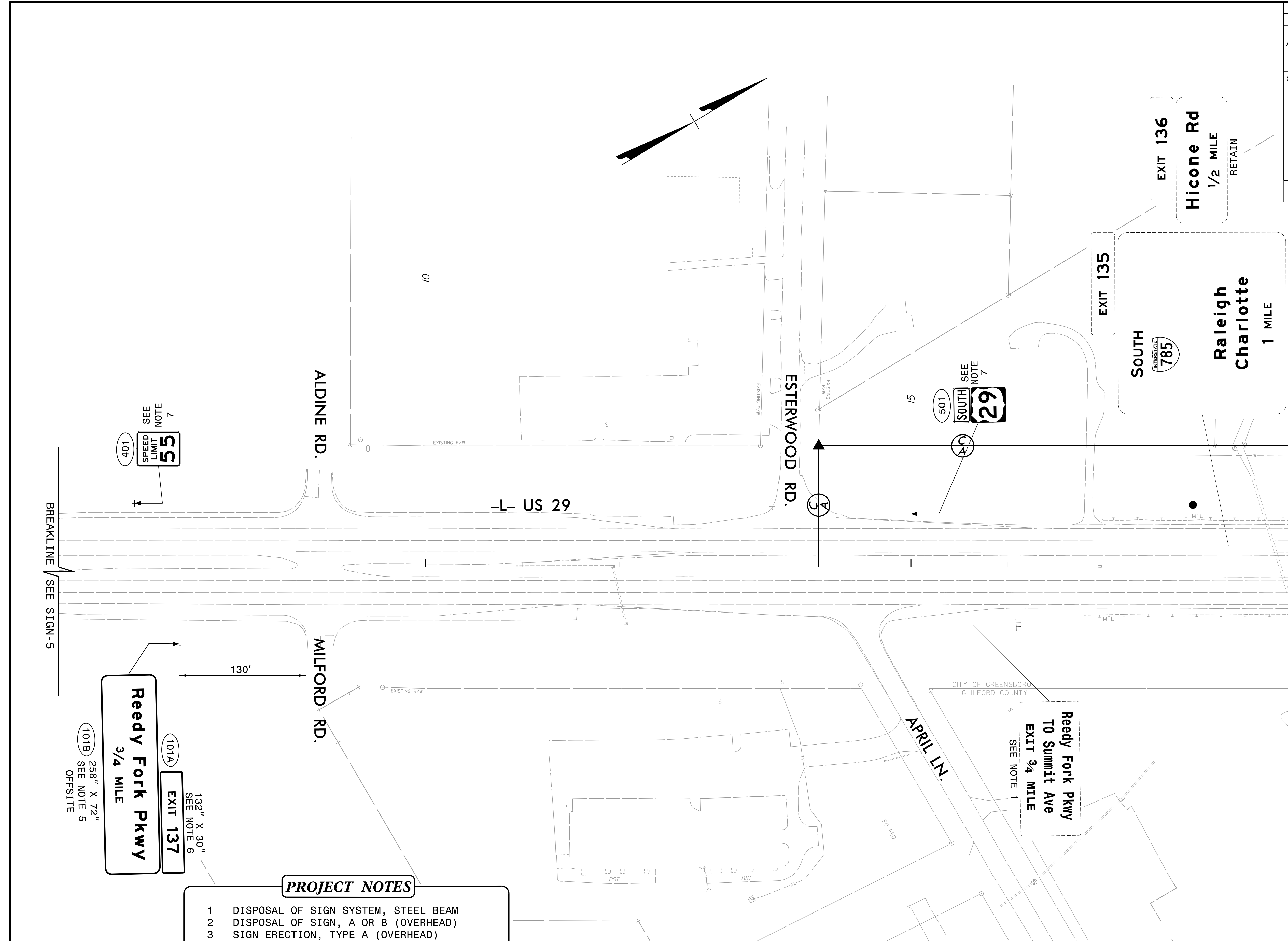


PROJECT REFERENCE NO. R-4707	SHEET NO. SIGN-6
APPROVED: <i>David J. Sears</i> 4/16/2020	
SEAL NORTH CAROLINA PROFESSIONAL ENGINEER SEAL 044558 DAVID T. SEARS	
DOCUMENT NOT CONSIDERED FINAL UNLESS ALL SIGNATURES COMPLETED	



SEE NOTE 7
SPEED LIMIT 55
401

BREAKLINE SEE SIGN-5

130'
MILFORD RD.
EXISTING R/W
132" X 30"
SEE NOTE 6
EXIT 137
101A
Reedy Fork Pkwy
3/4 MILE
258" X 72"
SEE NOTE 5
OFFSITE
101B

PROJECT NOTES

- 1 DISPOSAL OF SIGN SYSTEM, STEEL BEAM
- 2 DISPOSAL OF SIGN, A OR B (OVERHEAD)
- 3 SIGN ERECTION, TYPE A (OVERHEAD)
- 4 SIGN ERECTION, TYPE B (OVERHEAD)
- 5 SIGN ERECTION, TYPE A (GROUND MOUNTED)
- 6 SIGN ERECTION, TYPE B (GROUND MOUNTED)
- 7 SIGN ERECTION, TYPE D, E, AND F
- 8 SIGN ERECTION, MILEMARKER

Reedy Fork Pkwy
TO Summit Ave
EXIT 3/4 MILE
SEE NOTE 1

EXIT 135
SOUTH
Raleigh Charlotte
1 MILE
RETAIN

EXIT 136
Hicone Rd
1/2 MILE
RETAIN

PROPOSED SIGNS
US 29 OFFSITE TO -L- STA. 19+50

RK&K
P: (919) 878-9560
8601 Six Forks Road Forum 1 Suite 700 | Raleigh, N.C. 27615
NC License No. F-0112
Engineers | Construction Managers | Planners | Scientists
www.rkk.com
Responsive People | Creative Solutions