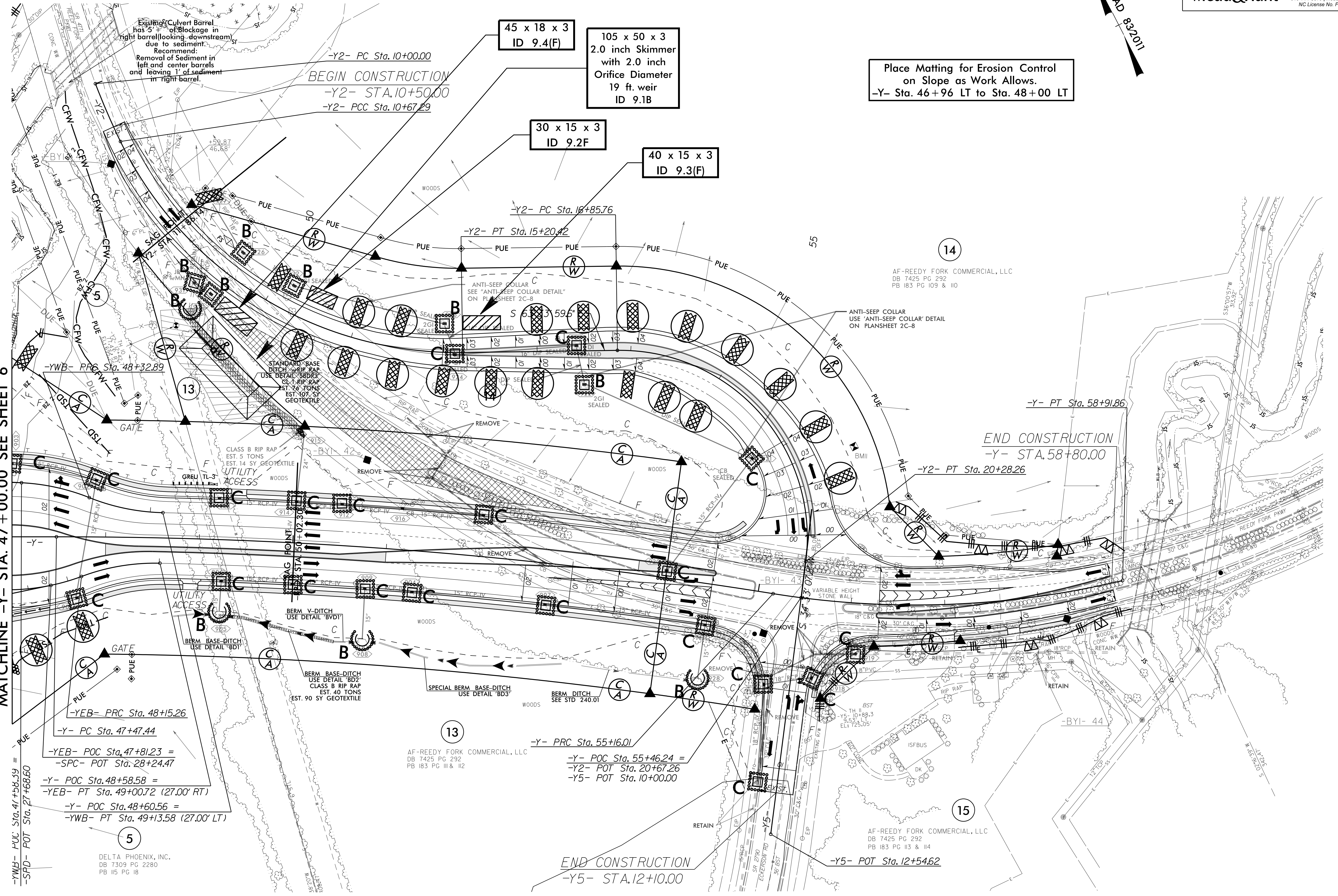


MATCHLINE -Y- STA. 47+00.00 SEE SHEET 6



-YWB- POC Sta. 47+58.59 =
 -SPD- POT Sta. 27+68.60
 -YEB- POC Sta. 48+15.26
 -Y- PC Sta. 47+47.44
 -YEB- POC Sta. 47+81.23 =
 -SPC- POT Sta. 28+24.47
 -Y- POC Sta. 48+58.58 =
 -YEB- PT Sta. 49+00.72 (27.00' RT)
 -Y- POC Sta. 48+60.56 =
 -YWB- PT Sta. 49+13.58 (27.00' LT)

5
 DELTA PHOENIX, INC.
 DB 7309 PG 2280
 PB 115 PG 18

13
 AF-REEDY FORK COMMERCIAL, LLC
 DB 7425 PG 292
 PB 183 PG III & II2

-Y- PRC Sta. 55+16.01
 -Y- POC Sta. 55+46.24 =
 -Y2- POT Sta. 20+67.26
 -Y5- POT Sta. 10+00.00

END CONSTRUCTION
 -Y5- STA. 12+10.00

15
 AF-REEDY FORK COMMERCIAL, LLC
 DB 7425 PG 292
 PB 183 PG 113 & 114

-Y5- POT Sta. 12+54.62

Place Matting for Erosion Control
 on Slope as Work Allows.
 -Y- Sta. 46+96 LT to Sta. 48+00 LT

45 x 18 x 3
ID 9.4(F)

105 x 50 x 3
2.0 inch Skimmer
with 2.0 inch
Orifice Diameter
19 ft. weir
ID 9.1B

30 x 15 x 3
ID 9.2(F)

40 x 15 x 3
ID 9.3(F)

14
AF-REEDY FORK COMMERCIAL, LLC
DB 7425 PG 292
PB 183 PG 109 & 110

ANTI-SEEP COLLAR
USE 'ANTI-SEEP COLLAR' DETAIL
ON PLANSHEET 2C-8

END CONSTRUCTION
-Y- STA. 58+00.00

-Y- PT Sta. 58+91.86

-Y2- PT Sta. 20+28.26

-BYI- 44

-BYI- 43

-BYI- 42

-BYI- 41

-BYI- 40

-BYI- 39

-BYI- 38

-BYI- 37

-BYI- 36

-BYI- 35

-BYI- 34

-BYI- 33

-BYI- 32

-BYI- 31

-BYI- 30

-BYI- 29

-BYI- 28

-BYI- 27

-BYI- 26

-BYI- 25

-BYI- 24

-BYI- 23

-BYI- 22

-BYI- 21

-BYI- 20

-BYI- 19

-BYI- 18

-BYI- 17

-BYI- 16

-BYI- 15

-BYI- 14

-BYI- 13

-BYI- 12

-BYI- 11

-BYI- 10

-BYI- 9

-BYI- 8

-BYI- 7

-BYI- 6

-BYI- 5

-BYI- 4

-BYI- 3

-BYI- 2

-BYI- 1