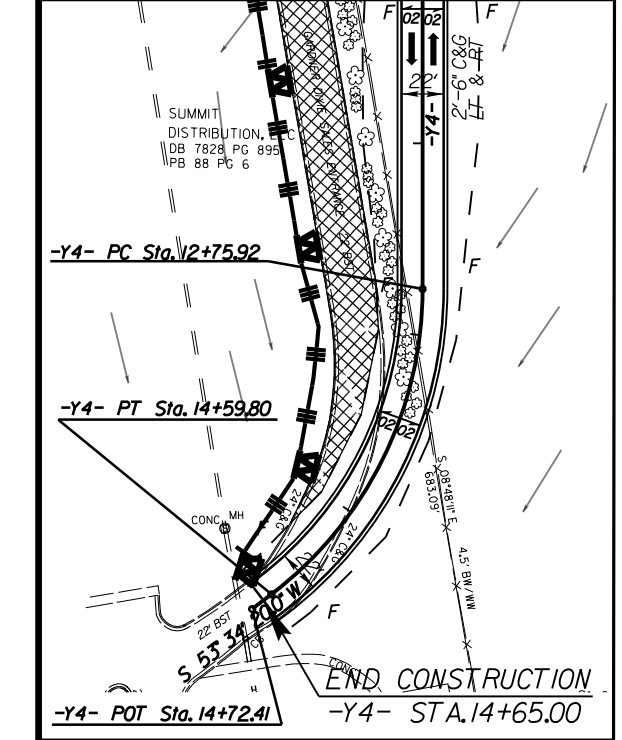


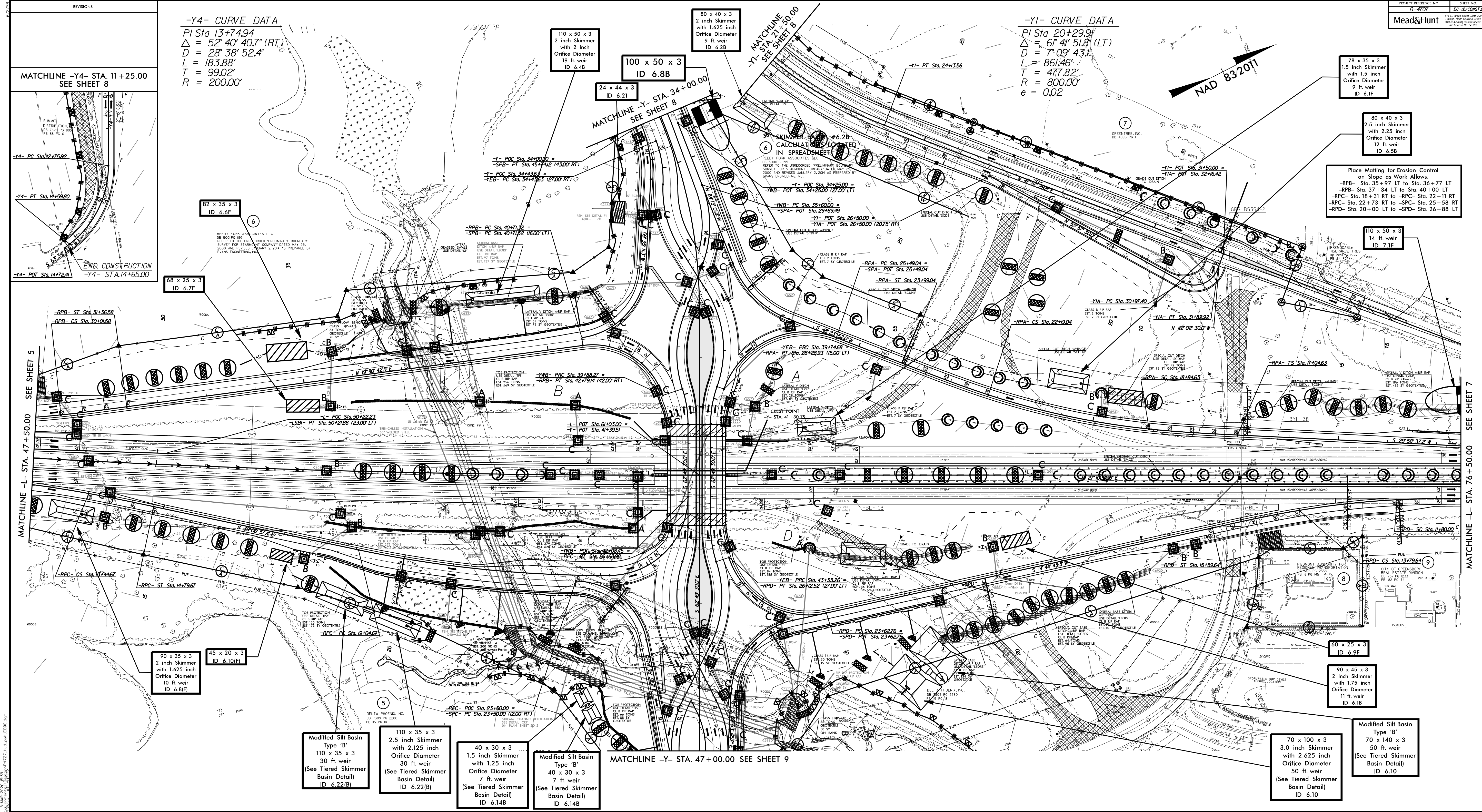
REVISIONS

MATCHLINE -Y4- STA. 11+25.00
 SEE SHEET 8



-Y4- CURVE DATA
 PI Sta 13+74.94
 $\Delta = 52^\circ 40' 40.7''$ (RT)
 $D = 28' 38'' 52.4''$
 $L = 183.88'$
 $T = 99.02'$
 $R = 200.00'$

-Y1- CURVE DATA
 PI Sta 20+29.91
 $\Delta = 61^\circ 41' 51.8''$ (LT)
 $D = 7^\circ 09' 43.1''$
 $L = 861.46'$
 $T = 477.82'$
 $R = 800.00'$
 $e = 0.02$



MATCHLINE -L- STA. 47+50.00
 SEE SHEET 5

MATCHLINE -Y- STA. 47+00.00
 SEE SHEET 9

MATCHLINE -L- STA. 76+50.00
 SEE SHEET 7

82 x 35 x 3
 ID 6.6F

68 x 25 x 3
 ID 6.7F

90 x 35 x 3
 2 inch Skimmer
 with 1.625 inch
 Orifice Diameter
 10 ft. weir
 ID 6.8(F)

45 x 20 x 3
 ID 6.10(F)

Modified Silt Basin
 Type 'B'
 110 x 35 x 3
 30 ft. weir
 (See Tiered Skimmer
 Basin Detail)
 ID 6.22(B)

110 x 35 x 3
 2.5 inch Skimmer
 with 2.125 inch
 Orifice Diameter
 30 ft. weir
 (See Tiered Skimmer
 Basin Detail)
 ID 6.22(B)

40 x 30 x 3
 1.5 inch Skimmer
 with 1.25 inch
 Orifice Diameter
 7 ft. weir
 (See Tiered Skimmer
 Basin Detail)
 ID 6.14B

Modified Silt Basin
 Type 'B'
 40 x 30 x 3
 7 ft. weir
 (See Tiered Skimmer
 Basin Detail)
 ID 6.14B

100 x 50 x 3
 ID 6.8B

24 x 44 x 3
 ID 6.21

80 x 40 x 3
 2 inch Skimmer
 with 1.625 inch
 Orifice Diameter
 9 ft. weir
 ID 6.2B

78 x 35 x 3
 1.5 inch Skimmer
 with 1.5 inch
 Orifice Diameter
 9 ft. weir
 ID 6.1F

80 x 40 x 3
 2.5 inch Skimmer
 with 2.25 inch
 Orifice Diameter
 12 ft. weir
 ID 6.5B

Place Matting for Erosion Control
 on Slope as Work Allows.
 -RBP- Sta. 35+97 LT to Sta. 36+77 LT
 -RBP- Sta. 37+34 LT to Sta. 40+00 LT
 -RPC- Sta. 18+31 RT to -RPC- Sta. 22+11 RT
 -RPC- Sta. 22+73 RT to -SPC- Sta. 25+58 RT
 -RPD- Sta. 20+00 LT to -SPD- Sta. 26+88 LT

110 x 50 x 3
 ID 7.1F

60 x 25 x 3
 ID 6.9F

70 x 100 x 3
 3.0 inch Skimmer
 with 2.625 inch
 Orifice Diameter
 50 ft. weir
 (See Tiered Skimmer
 Basin Detail)
 ID 6.10

Modified Silt Basin
 Type 'B'
 70 x 140 x 3
 50 ft. weir
 (See Tiered Skimmer
 Basin Detail)
 ID 6.10

18-0485-020701 (01) 18-0485-020701 (01) 18-0485-020701 (01) 18-0485-020701 (01) 18-0485-020701 (01)